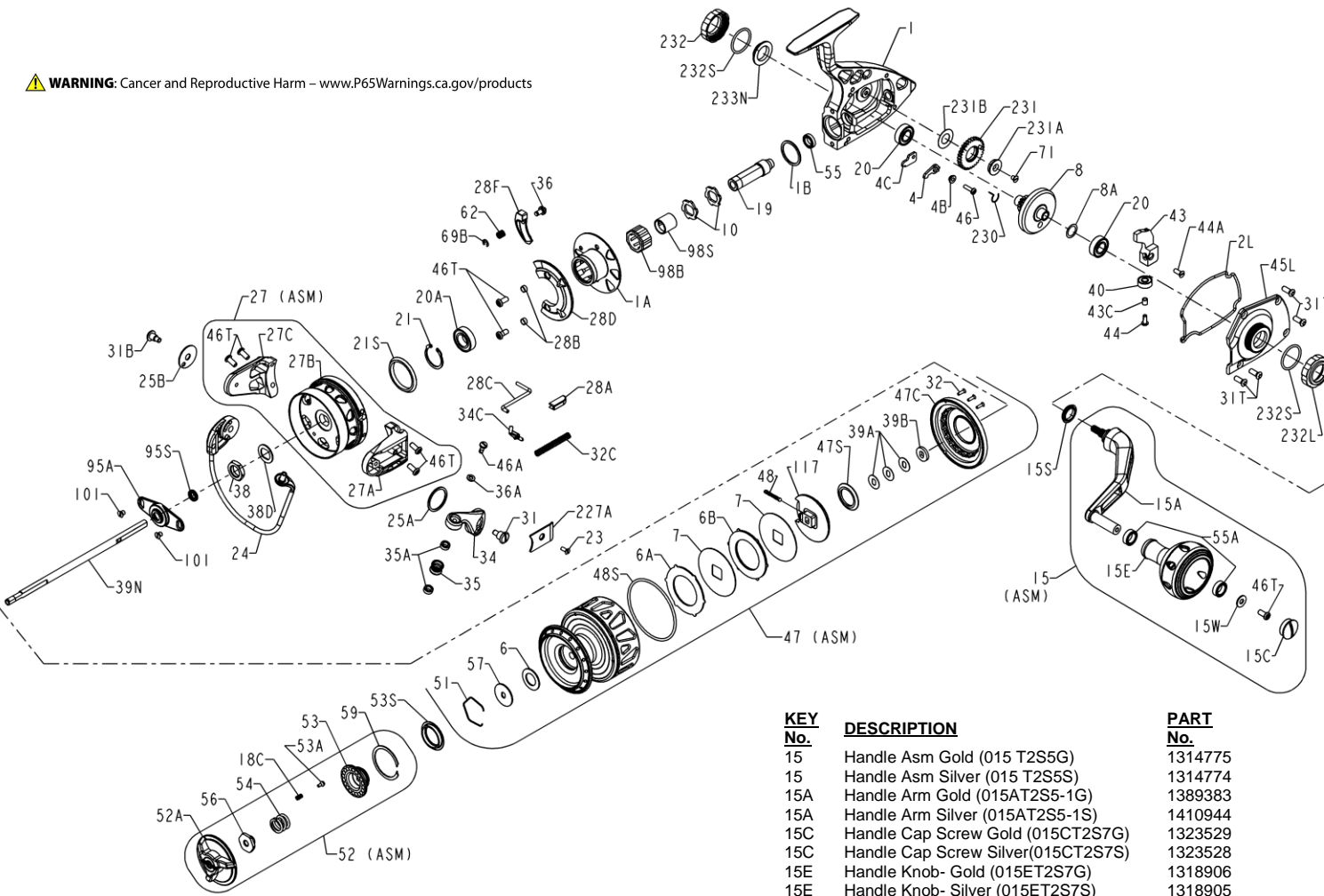




# TRQII5500-G (Gold) 1339432 & TRQII5500-S (Silver) 1403979

**WARNING:** Cancer and Reproductive Harm – [www.P65Warnings.ca.gov/products](http://www.P65Warnings.ca.gov/products)



KEY No.	DESCRIPTION	PART No.
1	Housing (Asm) Gold (001 T2S5G)	1347067
1	Housing (Asm) Silver (001 T2S5S)	1347066
1A	Clutch Housing- Gold (001AT2S5G)	1314770
1A	Clutch Housing- Silver (001AT2S5S)	1314769
1B	Rubber Flat Washer (001BT2S7-1)	1435254
2L	Side Plate Seal (002LT2S5)	1314771
4	Back-Up Dog (004 T2S7)	1314722
4B	Back-Up Dog Bushing (004BT2S7)	1314723
4C	Back-Up Dog Plate (004CT2S7)	1314724
6	Washer- Drag (006 T2S5)	1424678
6A	Drag Washer Asm 1 Sided (006 T2S5-1)	1415386
6B	Drag Washer Asm 2 Sided (006 T2S5-2)	1415387
7	Keyed Drag Washer (007 TS5) (2 req)	1210096
8	Gear Asm (008 T2S5)	1314772
8A	Shim 002" (008ATS5-2) (as needed)	1229045
8A	Shim 004" (008ATS5-4) (as needed)	1229046
8A	Shim 008" (008ATS5-8) (as needed)	1229047
10	Back-Up Ratchet (010 T2S7) (2 req)	1314727

KEY No.	DESCRIPTION	PART No.
15	Handle Asm Gold (015 T2S5G)	1314775
15	Handle Asm Silver (015 T2S5S)	1314774
15A	Handle Arm Gold (015AT2S5-1G)	1389383
15A	Handle Arm Silver (015AT2S5-1S)	1410944
15C	Handle Cap Screw Gold (015CT2S7G)	1323529
15C	Handle Cap Screw Silver (015CT2S7S)	1323528
15E	Handle Knob- Gold (015ET2S7G)	1318906
15E	Handle Knob- Silver (015ET2S7S)	1318905
15S	Handle Seal (015STS7)	1200419
15W	Washer- Flat (015WT2S7)	1347059
18C	Spring- Drag Click (018C015KG)	1181632
19	Pinion (019NT2S5)	1449573
20	Bearing- Ball (020 722)(2 req)	1181792
20A	Bearing- Ball (020 TS7)	1191260
21	Ring- Retaining (021 TS7)	1192641
21S	Seal (021STS7)	1191276
23	Screw (023 T2S7)	1316317
24	Bail Wire Assembly (024 T2S5)	1314777
25A	Bail Arm Washer (025AT2S7)	1314733
25B	Bail Cam Washer (025BT2S7)	1317508
27	Rotor Assembly Gold (027 T2S5G)	1415390
27	Rotor Assembly Silver (027 T2S5S)	1415392
27A	Rotor Roller Arm- Gold (027AT2S5G)	1314784
27A	Rotor Roller Arm- Silver (027AT2S5S)	1314783
27B	Rotor Cup- Gold (027BT2S5G)	1314781
27B	Rotor Cup- Silver (027BT2S5S)	1314780
27C	Rotor Cam Arm- Gold (027CT2S5G)	1314787
27C	Rotor Cam Arm- Silver (027CT2S5S)	1314786
28A	Trip Lever Guide (028AT2S7)	1314743
28B	Bushing- Friction Ring (028BTS7)(2 req)	1200338
28C	Trip Lever (028 CFT4000)	1308062

KEY No.	DESCRIPTION	PART No.
28D	Ring- Friction (028DTS5)	1200377
28F	Trip Ramp (028FTS5)	1200378
31	Bail Arm Screw (031 T2S7)	1314744
31B	Cam Arm Screw (031BT2S7)	1318479
31T	Screw (031TT2S7)(4req)	1314745
32	Flat Head Screw (032 T2S5) (3req)	1455334
32C	Bail Spring (032 CFT5000)	1308101
34	Bail Arm- Gold (034 T2S5G)	1318908
34	Bail Arm- Silver (034 T2S5S)	1318907
34C	Pivot Arm (034CSSV5500)	1277058
35	Line Roller (035 TS5)	1200382
35A	Bearing (035ATS5) (2 req)	1200383
36	Trip Switch Button (036 TS5)	1200384
36A	Washer- External Tooth Lock(036A750)	1183032
38	Nut- Rotor (038 9500)	1183160
38D	Washer- Rotor (038DSSV7500)	1277168
39A	Shim- Double D (039AT2S5) (as needed)	1314788
39B	Washer- Double D (039BT2S5)	1314789
39N	Spool Shaft (039NT2S5)	1323457
40	Ball Bearing (040 320)	1183280
43	Crosswind Block (043 TS5)	1200386
43C	Bushing (043CTS5)	1202296
44	Screw (044 TS5)	1202297
44A	Screw (044 TS7)	1225769
45L	Left Side Plate Asm- Gold (045LT2S5G)	1314792
45L	Left Side Plate Asm- Silver (045LT2S5S)	1314791
46	Screw (046 4300)	1183567
46A	Line Roller Screw (046 TS5M)	1225782
46T	Screw (046TTS7)(7 req)	1191914
47	Spool Assembly Gold (047 T2S5G)	1420135
47	Spool Assembly Silver (047 T2S5S)	1420136
47C	Drag Cover (047CT2S5)	1314795
47S	Drag Drive Plate Seal (047SSSV5500)	1277082
48	Click Tongue Asm (048 5600)	1183710
48S	O-Ring (048STS5)	1211090
51	Retainer- Pentagon Wire (051 T2S5)	1424679
52	Drag Knob Assembly Gold(052 T2S5G)	1314797
52	Drag Knob Assembly Silver (052 T2S5S)	1314796
52A	Drag Knob - Gold (052 T2S5-1G)	1337168
52A	Drag Knob - Silver (052 T2S5-1S)	1337167
53	Drag Knob Insert (053 T2S5)	1318909
53A	Pin- Drag Knob Click (053A5600)	1183846
53S	Drag Knob Seal (053SSSV7500)	1293253
54	Spring- Compression (054 704)	1192020
55	Bearing- Ball (055 TS5)	1200399
55A	Bearing- Ball (055 TS7)(2req)	1192029
56	Drag Nut (056 T2S5)	1338995
57	Drag Washer Keyed (057 5600)	1183934
59	Ring- Retaining (059 TS7)	1233962
62	Trip Switch Spring (062 TS7)	1200353
69B	Ring- Retaining (069B050)	1184125
71	Flat Head Screw (071 TS7)	1200354
95A	Rotor Nut Cover (095AT2S7)	1314758
95S	Seal- Spool Shaft (095STS5)	1200400
98B	Bearing- Clutch (098B750M)	1200401
98S	Sleeve- Clutch Bearing (098STRQ40)	1230425
101	Flat Head Screw (101 050S) (2 req)	1184404
117	Drive Plate (117 T2S5)	1314798
227A	Rotor Arm Cover- Gold (227AT2S5G)	1314800
227A	Rotor Arm Cover- Silver (227AT2S5S)	1314799
230	Spring- Friction Dog (230 T2S5)	1314801
231	Gear- Crosswind (231 TS5)	1200407
231A	Bushing- Crosswind Gear (231ATS7)	1192741
231B	Washer (231BTS7)	1192742
232	Bearing Cover- Open Gold (232 TS7G)	1200359
232	Bearing Cover- Open Silver (232 TS7S)	1235634
232L	Bearing Cover- Open LH Gold (232LTS7G)	1253565
232L	Bearing Cover- Open LH Silver(232LTS7S)	1390209
232S	O-Ring (232ST2S7) (2 req)	1314763
233N	Cap-Bearing Gold (233NTS7G)	1253568
233N	Cap-Bearing Silver (233NTS7S)	1234373