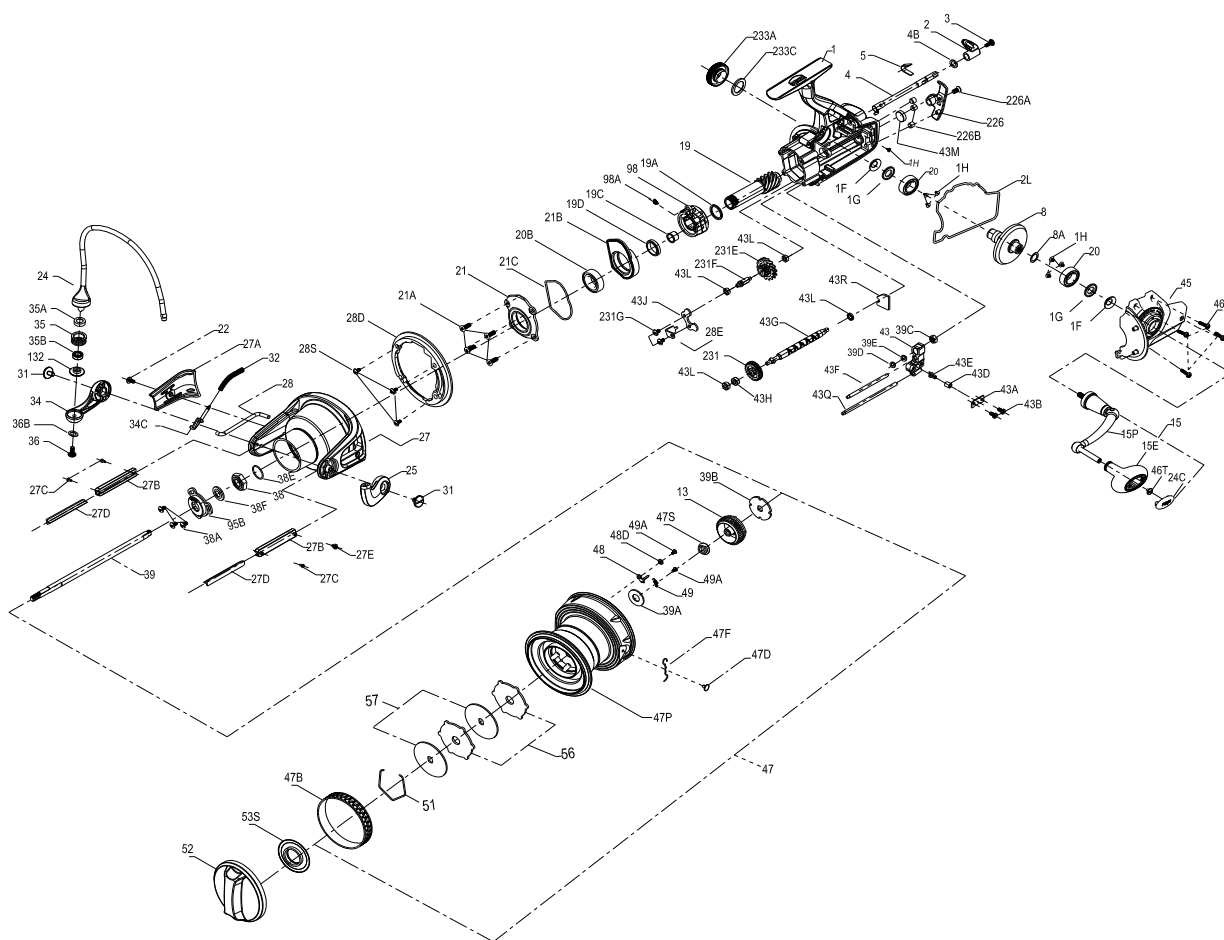




PARTS LIST FOR MODEL SSVI7500LC-US / SSVI7500LC-EU



KEY NC PART NO.	PENN STYLE NO.	DESCRIPTION
24C	1494753	24C-SSVI6500LL Handle Knob Cap
25	1385663	25-CLA8000 Bail Holder
27	1494876	27-SSVI7500LC Rotor
27A	1494877	27A-SSVI7500LC Rotor Cover
27B	1494878	27B-SSVI7500LC Line Guard Holder
27C	1341516	27C-SSVI7500LC Screw
27D	1494879	27D-SSVI7500LC Line Guard
27E	1381396	27E-SSVI7500LC Screw
28	1494880	28-SSVI7500LC Rotor Trip Lever
28D	1494881	28D-SSVI7500LC Rotor Brake
28E	1341520	28E-SSVI7500LC Brake Retainer Plate
28S	1277054	28S-SSV5500 Screw
31	1277055	31-SSV5500 Screw
32	1494882	32-SSVI7500LC Bail Spring
34	1385667	34-CLA8000 Bail Arm
34C	1277164	34C-SSV7500 Pivot Arm
35	1457403	35-SLAIH6500HS Line Roller
35A	1457404	35A-SLAIH6500HS Line Roller Bushing
35B	1377606	35A-BTLI8000LC Ball Bearing
36	1422399	36-SLA9500 Line Roller Screw
36B	1417809	36B-CLA6000 Bail Arm Screw Washer
38	1419103	38-SLAT500 Rotor Nut
38A	1277063	38A-SSV5500 Screw
38E	1302502	232B-SSV3500 Bearing Retainer O-Ring
38F	1419080	39F-SLA7500 Rotor-Main Shaft Seal
39	1494883	39-SSVI7500LC-US Main Shaft
39	1494884	39-SSVI7500LC-EU Main Shaft
39A	1341524	39A-SSV7500LC Spool Adjust Washer
39B	1341525	39B-SSV7500LC Main Shaft Washer
39C	1259637	39C-7000AF Main Shaft Nut
39D	1483228	39D-CFTI8000LC Rubber Pad
39E	1483229	39E-CFTI8000LC Fixing Plate
43	1259636	43-AF8000LC Worm O/S Slider
43A	1259635	43A-7000AF Slider Retainer Plate
43B	1276992	14-SSV6500LL Screw
43D	1122193	43D-7000AF Guide Claw Bushing
43E	1122192	43E-7000AF Guide Claw
43F	1259623	43F-AF8000LC Right Guide Shaft
43G	1494885	43G-SSVI7500LC Worm Shaft
43H	1377609	43H-BTLI8000LC Ball Bearing
43J	1259620	43J-7000AF Top Retainer Plate
43L	1341533	43L-SSV7500LC Bushing
43M	1341534	43M-SSV7500LC Worm Shaft Seal
43Q	1259626	43Q-AF8000LC Left Guide Shaft
43R	1259627	43J-AF8000LC Rear Retainer Plate
45	1494886	45-SSVI7500LC Body Cover Assembly
46	1381400	46-SSV7500LC Screw
46T	1494762	46T-SSVI6500LL Screw
47	1494887	47-SSVI7500LC Spool Assembly
47B	1341538	47B-SSV7500LC Spool Band
47D	1483213	47D-CFTI8000LC Line Clip
47F	1259575	47F-7000AF Line Clip Spring
47P	1494888	47P-SSVI7500LC-US Spool
47P	1494889	47P-SSVI7500LC-EU Spool
47S	1494890	47S-SSVI7500LC Seal
48	1259577	13-7000AF Spool Click Plate
48D	1341546	48D-SSV7500LC Spool Clicker Spacer Ring
49	1259579	49-7000AF Spool Click Spring
49A	1341547	49A-SSV7500LC Screw
51	1378418	51-BTLI7000LC Drag Washer Retainer
52	1494891	52-SSVI7500LC-US Drag Knob Assembly
52	1494892	52-SSVI7500LC-EU Drag Knob Assembly
53S	1483237	53S-CFTI8000LC Drag Knob Seal
56	1341550	56-SSV7500LC Drag Friction Washer
57	1341551	57-SSV7500LC Keyed Drag Washer
95B	1419114	95B-SLA7500 Rotor Nut Locking Plate
98	1259618	98-7000AF One Way Clutch Bearing Assembly
98A	1361930	98A-SSVI7500LC Clutch Assembly Spring
132	1457405	132-SLAIH6500HS Line Roller Collar
226	1494893	226-SSVI7500LC Rear Cover
226A	1341553	226A-SSV7500LC Screw
226B	1341554	226B-SSVI7500LC Body Rear Seal
231	1259624	231-AF8000LC O/S Gear
231E	1259622	231E-7000AF Slow O/S Gear
231F	1259621	231F-7000AF Slow O/S Gear Pin
231G	1277070	43B-SSV5500 Screw
233A	1419118	233A-SLA7500 Handle Cap Assembly
233C	1419076	233C-SLA5500 Handle Cap Seal

KEY NC PART NO.	PENN STYLE NO.	DESCRIPTION
1	1494865	1-SSVI7500LC-US Body Assembly
1	1494866	1-SSVI7500LC-EU Body Assembly
1F	1419019	1F-SLA5500 Body Side Seal
1G	1419020	1G-SLA5500 Lock Plate
1H	1418957	1H-SLA3500 Screw
2	1341498	2-SSV7500LC A/R Button
2L	1494867	2L-SSVI7500LC Body Seal
3	1341500	3-SSVI7500LC Screw
4	1494868	4-SSVI7500LC A/R Lever
4B	1361929	4B-SSV7500LC A/R Lever Washer
5	1483180	5-CFTI8000LC A/R Spring
8	1494869	8-SSVI7500LC Drive Gear
8A	1277146	8A-SSV7500 Drive Gear Shim Washer
13	1347065	13-SSV7500LC Click Gear
15	1494870	15-SSVI7500LC Handle Assembly
15P	1495539	15P-SSVI7500LC Sub-Handle Assembly
15E	1494749	15E-SSVI6500LL Handle Knob
19	1494871	19-SSVI7500LC Pinion Gear
19A	1259612	19A-SSV7500LC Washer
19C	1385683	19C-CLA8000 Pinion Gear Bushing
19D	1341509	19D-SSV7500LC Bushing
20	1308090	20-CFT5000 Ball Bearing
20B	1344681	20B-SSV7500 Ball Bearing
21	1494872	21-SSVI7500LC Ball Bearing Retainer
21A	1277044	21A-SSV5500 Screw
21B	1494873	21B-SSVI7500LC Pinion Bearing Collar
21C	1494874	21C-SSVI7500LC Pinion Bearing Collar Seal
22	1381395	22-SSV7500LC Screw
24	1494875	24-SSVI7500LC Bail Assembly

407-SSVI7500LC Rev.00 16-3-2018

1481275--SSVI7500LC-US
1481276--SSVI7500LC-EU