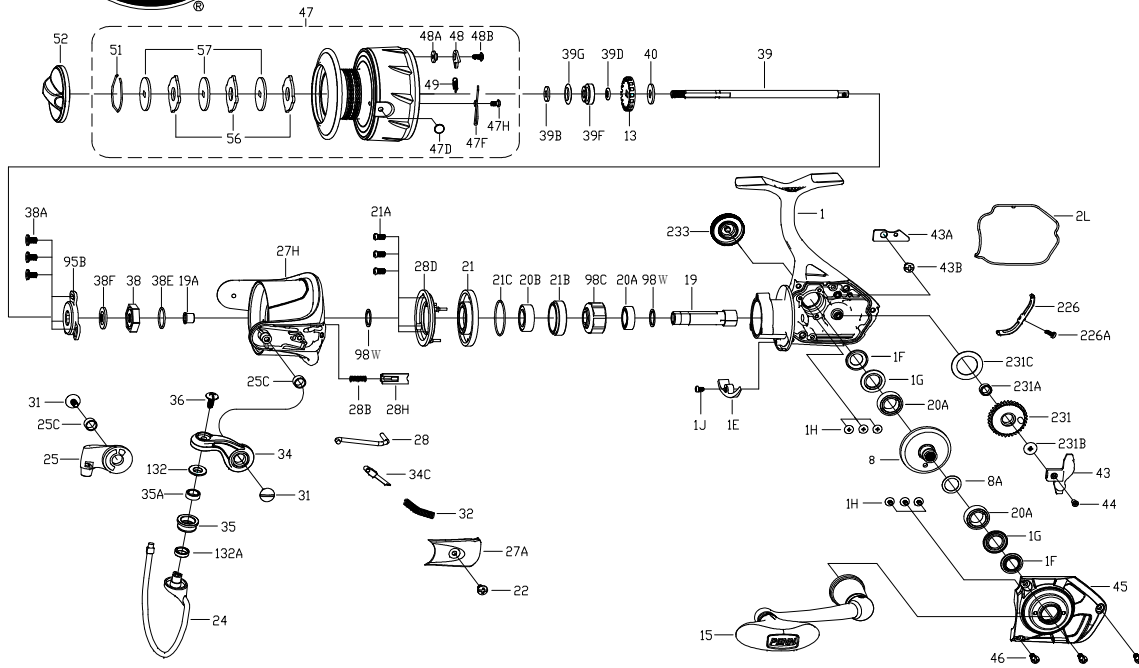




PARTS LIST FOR MODEL AS SSVI4500



KEY NO.	PART NO.	PENN STYLE NO.	DESCRIPTION
27H	1489236	27H-SSVI4500	Rotor Assembly
28	1489237	28-SSVI4500	Trip Lever
28B	1489193	28B-SSVI3500	Rotor Brake Spring
28D	1489194	28D-SSVI3500	Rotor Brake
28H	1489195	28H-SSVI3500	Rotor Brake
31	1489196	31-SSVI3500	Bail Arm Screw (2 req)
32	1191583	32-2000SG	Bail Spring
34	1489197	34-SSVI3500	Bail Arm
34C	1489198	34C-SSVI3500	Pivot Arm
35	1489199	35-SSVI3500	Line Roller
35A	1489200	35A-SSVI3500	Roller Bearing
36	1191699	36-3000SG	Bail Stud Screw
38	1489201	38-SSVI3500	Rotor Nut
38A	1308069	38A-CFT3000	Rotor Nut Cover Screw (3 req)
38E	1489203	38E-SSVI3500	Rotor O Ring
38F	1489204	38F-SSVI3500	Main Shaft Seal Ring
39	1489238	39-SSVI4500	Main Shaft
39B	1489206	39B-SSVI3500	Thrust Washer
39D	1489207	39D-SSVI3500	Spool Bushing Seal Ring
39F	1489208	39F-SSVI3500	Spool Bushing
39G	1489209	39G-SSVI3500	Spool Seal Ring
40	1489210	40-SSVI3500	Main Shaft Washer
43	1489211	43-SSVI3500	Crosswind Block
43A	1489212	43A-SSVI3500	Crosswind Block Plate
43B	1489213	43B-SSVI3500	Crosswind Block Plate Screw
44	1489214	44-SSVI3500	Crosswind Block Screw
45	1489239	45-SSVI4500	Housing Cover Assembly
46	1192645	21A-5000SG	Bearing Retainer Screw (3 req)
47	1489240	47-SSVI4500	Spool Assembly
47D	1489217	47D-SSVI3500	Line Clip
47F	1489218	47F-SSVI3500	Line Clip Spring
47H	1489219	47H-SSVI3500	Line Clip Spring Screw
48	1211604	48-3000SG	Click Tongue
48A	1214226	48A-3000SG	Click Tongue Washer
48B	1489220	48B-SSVI3500	Spool Click Screw
49	1211605	49-3000SG	Click Tongue Spring
51	1308078	51-CFT3000	Drag Retaining Ring
52	1489221	52-SSVI3500	Drag Knob Assembly
56	1308080	56-CFT3000	Drag Washer (3 req)
57	1489222	57-SSVI3500	Keyed Washer (3 req)
95B	1489223	95B-SSVI3500	Rotor Nut Cover
98C	1308082	98C-CFT3000	Clutch/Sleeve Assembly
98W	1204004	98W-3000PUR	Clutch Washer (2 req)
132	1489224	132-SSVI3500	Roller Washer
132A	1489225	132A-SSVI3500	Line Roller Bushing
226	1489226	226-SSVI3500	Rear Cover
226A	1489227	226A-SSVI3500	Rear Cover Screw
231	1489241	231-SSVI4500	Crosswind Gear
231A	1489229	231A-SSVI3500	Crosswind Gear Bushing
231B	1489230	231B-SSVI3500	Crosswind Gear Screw
231C	1489231	231C-SSVI3500	Crosswind Gear Washer
233	1489232	233-SSVI3500	Bearing Cover Assembly

KEY NO.	PART NO.	PENN STYLE NO.	DESCRIPTION
1	1489233	1-SSVI4500	Housing Assembly
1E	1489173	1E-SSVI3500	Housing Slope
1F	1489174	1F-SSVI3500	Main Gear Seal Ring (2 req)
1G	1489175	1G-SSVI3500	Seal Plate (2 req)
1H	1489176	1H-SSVI3500	Bearing Screw(6 req)
1J	1489177	1J-SSVI3500	Housing Slope Screw
2L	1489178	2L-SSVI3500	Housing Seal Ring
8	1489179	8-SSVI3500	Main Gear
8A	1191028	8A-3000SG	Shim
13	1489180	13-SSVI3500	Click Ratchet
15	1489181	15-SSVI3500	Handle Assembly
19	1489182	19-SSVI3500	Pinion Gear
19A	1191252	19A-3000SG	Pinion Bushing
20A	1308050	20-CFT3000	Ball Bearing (3 req)
20B	1308051	20A-CFT3000	Upper Pinion Ball Bearing
21	1489183	21-SSVI3500	Bearing Retainer
21A	1489184	21A-SSVI3500	Bearing Retainer Screw (3 req)
21B	1489185	21B-SSVI3500	Collar
21C	1489186	21C-SSVI3500	Bearing Retainer O Ring
22	1203997	43B-3000PUR	Bail Pivot Cover Screw
24	1489234	24-SSVI4500	Bail Wire
25	1489188	25-SSVI3500	Bail Holder
25C	1489189	25C-SSVI3500	Bushing (2 req)
27A	1489235	27A-SSVI4500	Bail Pivot Cover

407-SSVI4500 Rev. 1 3-7-18

1481262