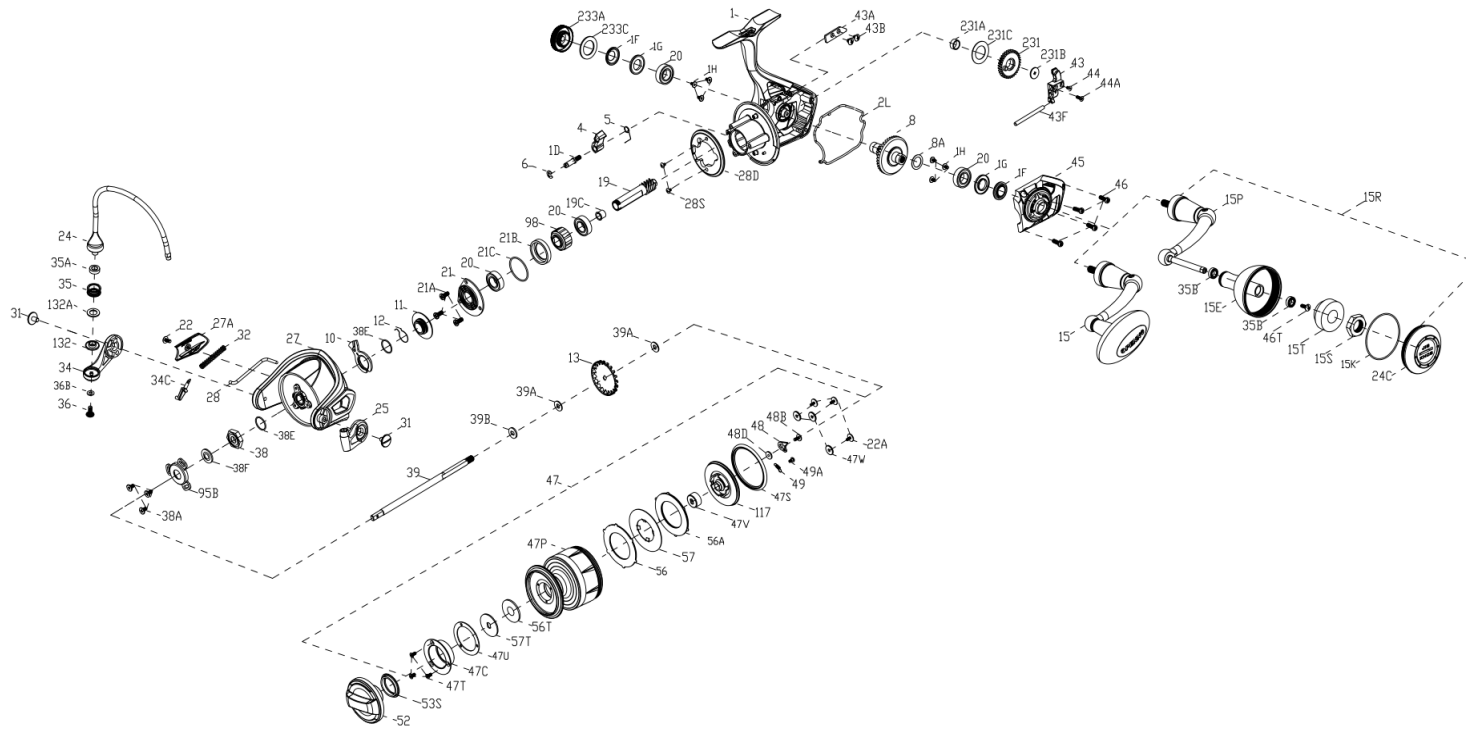


PENN PARTS LIST FOR MODEL SLAMMER III 8500 HS



KEY NO.	PART NO.	PENN STYLE NO.	DESCRIPTION
1	1447681	1-SLAI118500HS	Body Assembly
1D	1277140	1D-SSV7500	A/R Pawl Post
1P	1419083	1P-SLA7500	Body Side Seal
1G	1419082	1G-SLA7500	Body Side Seal Lock Plate
1H	1418957	1H-SLA3500	Body Side Screw
2L	1419086	2L-SLA7500	Body Seal
4	1277142	4-SSV7500	A/R Pawl
5	1277143	5-SSV7500	Pawl Spring
6	1277144	6-SSV7500	Retainer Clip
8	1447682	8-SLAI118500HS	Drive Gear
8A	1277037	8A-SSV5500	Drive Gear Shim Washer
10	1277147	10-SSV7500	A/R Pawl Holder
11	1419088	11-SLA7500	A/R Bushing
12	1309001	12-SSV9500	A/R Bushing Spring
13	1419089	13-SLA7500	Click Gear
15	1447689	15-SLAI118500HS	Handle Assembly
15E	1447670	15E-SLAI116500HS	Handle Knob
16K	1419073	16K-SLA5500	Handle Knob Cap Seal

KEY NO.	PART NO.	PENN STYLE NO.	DESCRIPTION
15P	1447688	15P-SLAI118500HS	Sub Handle Assembly
16R	1447690	16R-SLAI118500HS	Spare Handle Assembly
18S	1447679	18S-SLAI118500HS	Hexnut
16T	1447680	16T-SLAI116500HS	Clump Weight
19	1447685	19-SLAI118500HS	Pinion Gear
19C	1419092	19C-SLA7500	Pinion Gear Bushing
20	1277162	20A-SSV7500	Ball Bearing
21	1419093	21-SLA7500	Ball Bearing Retainer
21A	1277154	21A-SSV7500	Pinion Retainer Screw
21B	1419094	21B-SLA7500	Pinion Bearing Collar
21C	1385684	21C-CLA8000	O Ring
22	1277046	22-SSV5500	Rotor Cover Screw
22A	1125962	231G-7000AF	Screw
24	1419096	24-SLA8500	One Piece Bail
24C	1447673	24C-SLAI116500HS	Handle Knob Cap
25	1386663	25-CLA8000	Bail Holder
27	1419098	27-SLA8500	Rotor
27A	1419099	27A-SLA7500	Rotor Cover

KEY NO.	PART NO.	PENN STYLE NO.	DESCRIPTION
28	1419101	28-SLA8500	Rotor Trip Lever
28D	1277161	28D-SSV7500	Rotor Brake
28S	1277054	28S-SSV5500	Rotor Brake Screw
31	1277055	31-SSV5500	Bail Arm Screw
32	1419102	32-SLA7500	Bail Spring
34	1385667	34-CLA8000	Bail Arm
34C	1277164	34C-SSV7500	Pivot Arm
35	1277165	35-SSV7500	Line Roller
35A	1419050	35A-SLA5500	Line Roller Bushing
35B	1377606	35A-BTLI18000LC	Line Roller Ball Bearing
36	1277166	36-SSV7500	Line Roller Screw
36B	1417809	36B-CLA6000	Bail Arm Screw Washer
38	1419103	38-SLA7500	Rotor Nut
38A	1119121	20C-7000AF	Screw
38E	1302502	232B-SSV3500	Bearing Retainer O-Ring
38F	1419080	38F-SLA7500	Rotor-Main Shaft Seal
39	1419104	39-SLA7500	Main Shaft
39A	1277066	39A-SSV5500	Spool Adjust Washer
39B	1277067	39B-SSV5500	Main Shaft Washer
43	1419105	43-SLA7500	Oscillation Slider
43A	1277173	43A-SSV7500	O/S Slider Guide
43B	1277070	43B-SSV5500	Screw
43F	1389567	43F-CLA6000	O/S Slider Guide Shaft
44	1385672	44-CLA8000	Main Shaft Screw
44A	1447691	44A-SLAI118500HS	Main Shaft Screw
45	1447684	45-SLAI118500HS	Body Cover Assembly
46	1277074	46-SSV5500	Body Cover Screw
46T	1341500	3-SSV7500LC	A/R Button Screw
47	1447686	47-SLAI118500HS	Spool Assembly
47C	1419059	47C-SLA5500	Drag Cover
47P	1447687	47P-SLAI118500HS	Spool
47S	1419079	47S-SLA7500	Spool Seal
47T	1339552	47T-CLA5000	Drag Cover Screw
47U	1418960	47U-SLA3500	Drag Cover Seal
47V	1419063	47V-SLA5500	Sealed Nut
47W	1419066	47W-SLA5500	Protective Washer
48	1419069	48-SLA5500	Spool Clicker Plate
48B	1385581	48B-CLA3000	Spool Clicker Spring Screw
48D	1385579	48D-CLA3000	Spool Clicker Spacer Ring
49	1259679	49-7000AF	Spring
49A	1341547	49A-SSV7500LC	Spool Clicker Spring Screw
52	1419112	52-SLA7500	Drag Knob Assembly
53S	1339555	53S-CLA5500	Drag Knob Seal
56	1419077	56-SLA7500	Drag Friction Washer
56A	1419078	56A-SLA7500	Drag Friction Washer
56T	1277089	56T-SSV5500	Drag Friction Washer
57	1419113	57-SLA7500	Keyed Drag Washer
57T	1419068	57T-SLA5500	Keyed Drag Washer
95B	1419114	95B-SLA7500	Rotor Nut Locking Plate
98	1277190	98-SSV7500	Clutch/Sleeve Assembly
117	1419115	117-SLA7500	Drag Drive Plate
132	1419163	132-SLA9500	Line Roller Collar
132A	1277097	132A-SSV5500	Line Roller Washer
231	1419117	231-SLA7500	Oscillation Gear
231A	1339566	231A-CLA5000	O/S Gear Bushing
231B	1277100	231B-SSV5500	Gear Screw
231C	1389603	231C-CLA6000	O/S Gear Washer
233A	1447683	233A-SLAI118500HS	Handle Cap Assembly
233C	1419076	233C-SLA5500	Handle Cap Seal

407-SLAI118500HS Rev. 00 01-18-2017
1428933