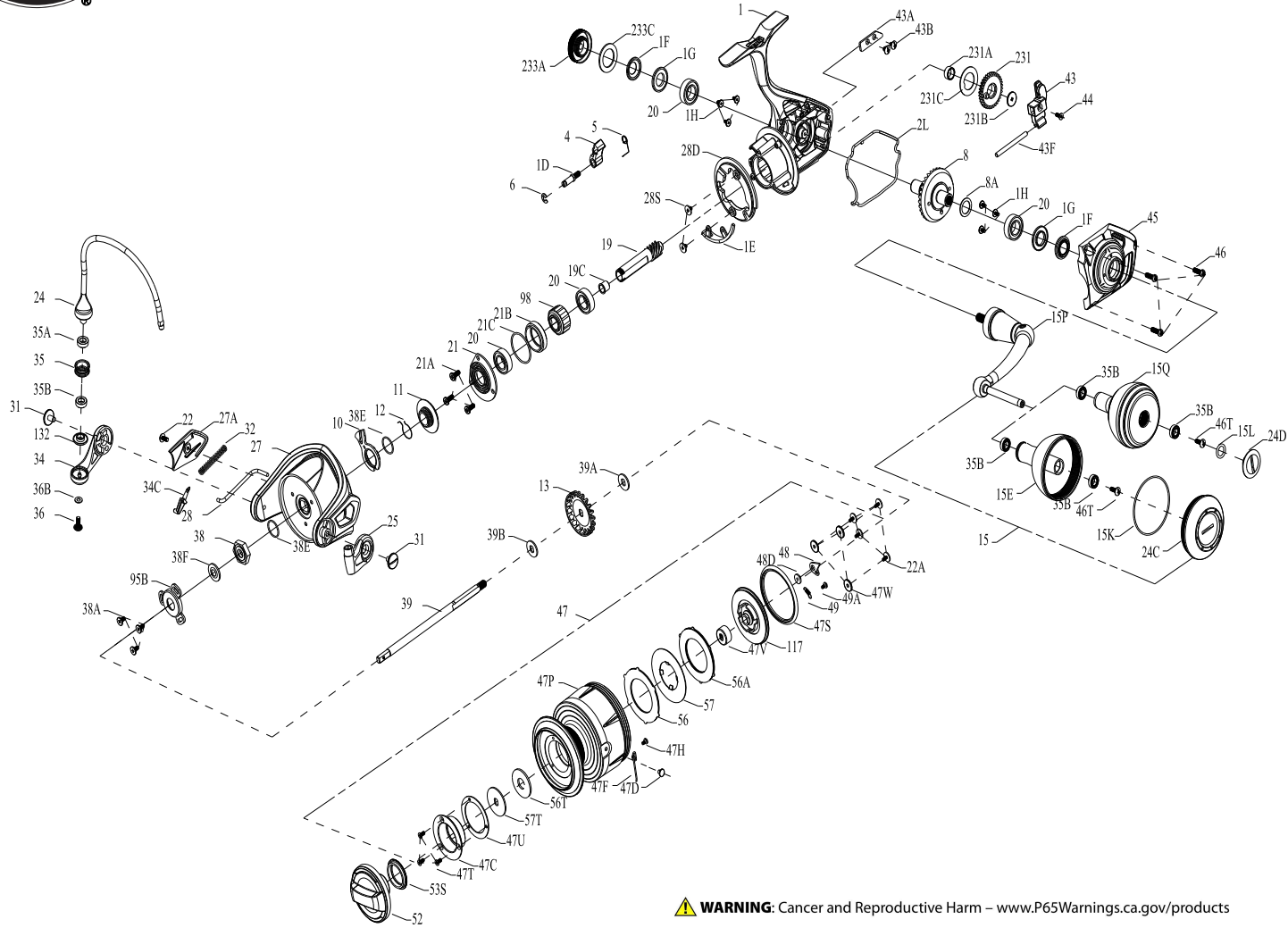




# PARTS LIST FOR MODEL SLAMMER III 5500



**⚠ WARNING:** Cancer and Reproductive Harm – [www.P65Warnings.ca.gov/products](http://www.P65Warnings.ca.gov/products)

KEY NO.	PART NO.	DESCRIPTION
22A	1496533	22A-SLA7500 Screw(4req.)
24	1474158	24-SLAIII5500 One Piece Bail
24C	1419074	24C-SLA5500 Handle Knob Cap
24D	1417808	24C-CLA5000 Handle Knob Cap
25	1339500	25-CLA5000 Bail Holder
27	1419041	27-SLA5500 Rotor
27A	1419045	27A-SLA5500 Rotor Cover
28	1419043	28-SLA5500 Rotor Trip Lever
28D	1339509	28D-CLA5000 Rotor Brake
28S	1339512	28S-CLA5000 Rotor Brake Screw(2req.)
31	1277055	31-SSV5500 Bail Arm Screw(2req.)
32	1389467	32-CLA6000 Bail Spring
34	1339516	34-CLA5000 Bail Arm
34C	1389469	34C-CLA6000 Pivot Arm
35	1457403	35-SLAIII6500HS Line Roller
35A	1457404	35A-SLAIII6500HS Line Roller Ball Bearing
35B	1377606	35A-BTLII8000LC Line Roller Ball Bearing(3req.)
36	1422399	36-SLA9500 Line Roller Screw
36B	1417809	36B-CLA6000 Bail Arm Screw Washer
38	1419051	38-SLA5500 Rotor Nut
38A	1119121	20C-7000AF Screw(3req.)
38E	1418958	38E-SLA3500 Pinion Gear Seal(2req.)
38F	1419052	38F-SLA5500 Rotor-Main Shaft Seal
39	1419032	39-SLA5500 Main Shaft
39A	1277066	39A-SSV5500 Spool Adjust Washer
39B	1277067	39B-SSV5500 Main Shaft Washer
43	1419030	43-SLA5500 Oscillation Slider
43A	1339536	43A-CLA5000 O/S Slider Guide
43B	1277070	43B-SSV5500 Screw(2req.)
43F	1339537	43F-CLA5000 O/S Slider Guide Shaft
44	1277072	44-SSV5500 Main Shaft Screw
45	1419037	45-SLA5500 Body Cover Assembly
46	1277074	46-SSV5500 Body Cover Screw (3req.)
46T	1341500	3-SSV7500LC A/R Button Screw
47	1419054	47-SLA5500 Spool Assembly
47C	1419059	47C-SLA5500 Drag Cover
47D	1277078	47D-SSV5500 Line Clip
47F	1419067	47F-SLA5500 Line Clip Retainer
47H	1277054	28S-SSV5500 Rotor Brake Screw
47P	1419056	47P-SLA5500 Spool
47S	1419065	47S-SLA5500 Spool Seal
47T	1339552	47T-CLA5000 Drag Cover Screw(3req.)
47U	1418960	47U-SLA3500 Drag Cover Seal
47V	1419063	47V-SLA5500 Sealed Nut
47W	1419066	47W-SLA5500 Protective Washer (3req.)
48	1419069	48-SLA5500 Spool Click Plate
48D	1385579	48D-CLA3000 Spool Clicker Spacer Ring
49	1259579	49-7000AF Spring
49A	1341547	49A-SSV7500LC Spool Clicker Spring Screw
52	1419070	52-SLA5500 Drag Knob Assembly
53S	1339555	53S-CLA5000 Drag Knob Seal
56	1419060	56-SLA5500 Drag Friction Washer
56A	1419062	56A-SLA5500 Drag Friction Washer
56T	1277089	56T-SSV5500 Drag Friction Washer
57	1419061	57-SLA5500 Keyed Drag Washer
57T	1419058	57T-SLA5500 Keyed Drag Washer
95B	1419009	95B-SLA3500 Rotor Nut Locking Plate
98	1277094	98-SSV5500 Clutch/Sleeve Assembly
117	1419064	117-SLA5500 Drag Drive Plate
132	1457405	132-SLAIII6500HS Line Roller Collar
231	1419021	231-SLA5500 Oscillation Bearing
231A	1339566	231A-CLA5000 O/S Gear Bushing
231B	1277100	231B-SSV5500 O/S Gear Screw
231C	1339567	231C-CLA5000 O/S Gear Washer
233A	1419075	233A-SLA5500 Handle Cap Assembly
233C	1419076	233C-SLA5500 Handle Cap Seal

KEY NO.	PART NO.	DESCRIPTION	KEY NO.	PART NO.	DESCRIPTION
1	1419017	1-SLA5500 Body Assembly	13	1419053	13-SLA5500 Click Gear
1D	1277140	1D-SSV7500 A/R Pawl Post	15	1419071	15-SLA5500 Handle Assembly
1E	1419026	1E-SLA5500 Body Slope	15E	1419072	15E-SLA5500 Handle Knob
1F	1419019	1F-SLA5500 Body Side Seal(2req.)	15K	1419073	15K-SLA5500 Handle Knob Cap Seal
1G	1419020	1G-SLA5500 Body Side Seal Lock Plate(2req.)	15L	1417804	15L-CLA2000 Handle Knob Cap Seal
1H	1418957	1H-SLA3500 Body Side Screw(6req.)	15P	1422395	15P-SLA5500 Sub-Handle Assembly
2L	1419035	2L-SLA5500 Body Seal	15Q	1418244	15E-CLA6000 Handle Knob
4	1339473	4-CLA5000 A/R Pawl	19	1419022	19-SLA5500 Pinion Gear
5	1339474	5-CLA5000 Pawl Spring	19C	1419023	19C-SLA5500 Pinion Gear Bushing
6	1277144	6-SSV7500 Retainer Clip	20	1308090	20-CFT5000 Ball Bearing(4req.)
8	1419034	8-SLA5500 Drive Gear	21	1419025	21-SLA5500 Ball Bearing Retainer
8A	1277037	8A-SSV5500 Drive Gear Shim Washer	21A	1277154	21A-SSV7500 Pinion Retainer Screw (3req.)
10	1339476	10-CLA5000 A/R Pawl Holder	21B	1419024	21B-SLA5500 Pinion Bearing Collar
11	1419028	11-SLA5500 A/R Bushing	21C	1385684	21C-CLA8000 O Ring
12	1339487	12-CLA5000 A/R Bushing Spring	22	1125962	231G-7000AF Screw