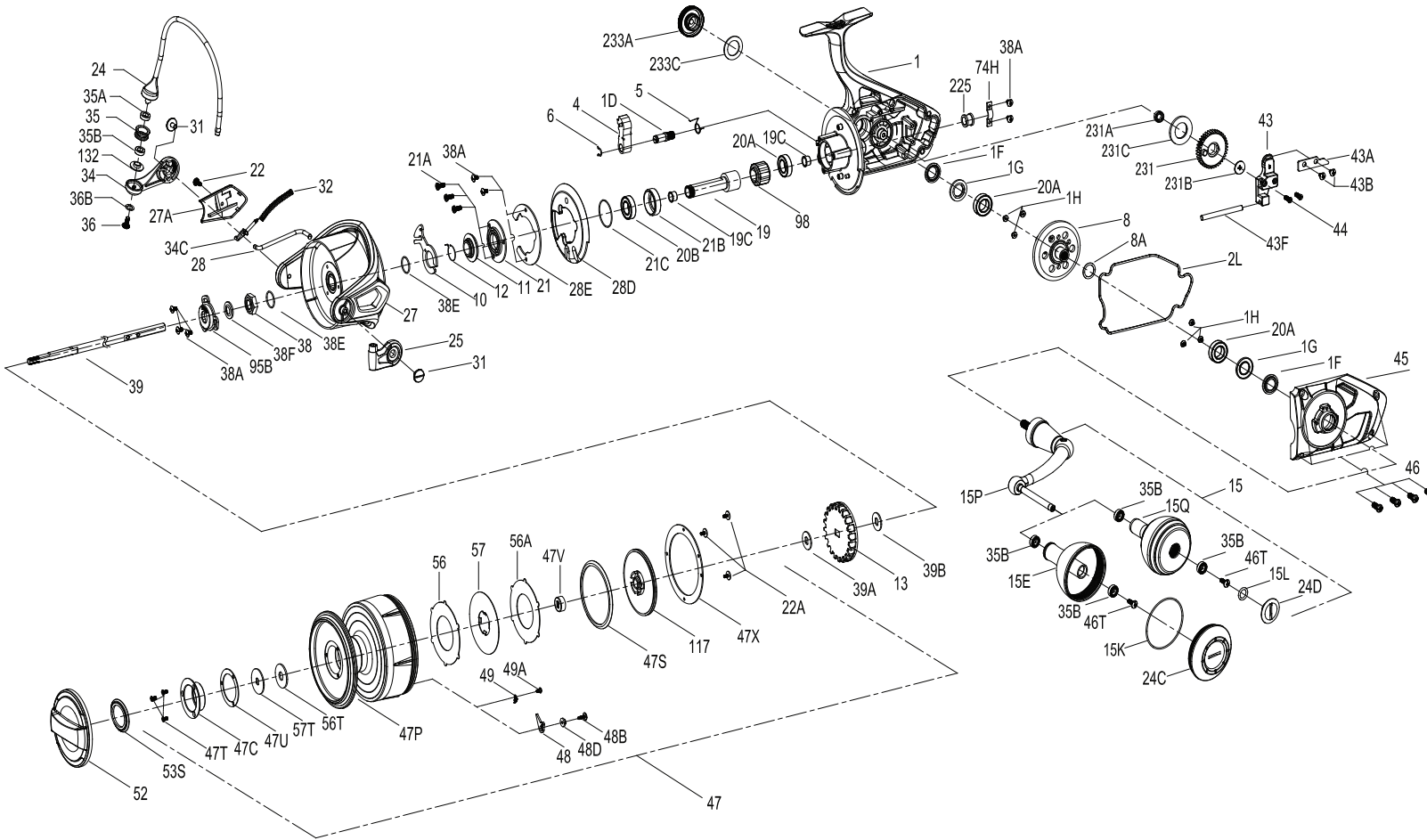




PARTS LIST FOR MODEL SLAMMERIII 9500/10500

WARNING: Cancer and Reproductive Harm – www.P65Warnings.ca.gov/products



| KEY NO. | PART NO. | DESCRIPTION |
|---------|----------|---|
| 1 | 1419122 | 1-SLA9500 Body Assembly |
| 1 | 1419123 | 1-SLA10500 Body Assembly |
| 1D | 1277252 | 1D-SSV9500 A/R Pawl Post |
| 1F | 1419083 | 1F-SLA7500 Body Side Seal (2req.) |
| 1G | 1419082 | 1G-SLA7500 Body Side Seal Lock Plate(2req.) |
| 1H | 1418957 | 1H-SLA3500 Body Side Screw(6req.) |
| 2L | 1419124 | 2L-SLA9500 Body Seal |
| 4 | 1277294 | 4-SSV10500 A/R Pawl |
| 5 | 1277255 | 5-SSV9500 A/R Pawl Spring |
| 6 | 1277256 | 6-SSV9500 Retainer Clip |
| 8 | 1419125 | 8-SLA9500 Driver Gear |
| 8A | 1277146 | 8A-SSV7500 Driver Gear Shim Washer |
| 10 | 1419126 | 10-SLA9500 A/R Pawl Holder |
| 11 | 1419088 | 11-SLA7500 A/R Bushing |
| 12 | 1309001 | 12-SSV9500 A/R Bushing Spring |
| 13 | 1419127 | 13-SLA9500 Spool Click Gear |
| 15 | 1419128 | 15-SLA9500 Handle Assembly |
| 15E | 1419072 | 15E-SLA5500 Handle Knob |

| KEY NO. | PART NO. | DESCRIPTION |
|---------|----------|--|
| 15K | 1419073 | 15K-SLA5500 Handle Knob Cap Seal |
| 15L | 1417804 | 15L-CLA2000 Handle Knob Cap Seal |
| 15P | 1422397 | 15P-SLA9500 Sub-Handle Assembly |
| 15Q | 1418244 | 15E-CLA6000 Handle Knob |
| 19 | 1419129 | 19-SLA9500 Pinion Gear |
| 19C | 1419130 | 19C-SLA9500 Pinion Gear Bushing(2req.) |
| 20A | 1277152 | 20A-SSV7500 Ball Bearing(3req.) |
| 20B | 1422398 | 20B-SLA9500 Sealed Ball Bearing |
| 21 | 1419131 | 21-SLA9500 Pinion Bearing Retainer |
| 21A | 1277154 | 21A-SSV7500 Pinion Retainer Screw(3req.) |
| 21B | 1419132 | 21B-SLA9500 Pinion Ball Bearing Collar |
| 21C | 1385684 | 21C-CLA8000 O Ring |
| 22 | 1277046 | 22-SSV5500 Rotor Cover Screw |
| 22A | 1496533 | 22A-SLA7500 Screw(3req.) |
| 24 | 1474160 | 24-SLA119500 Bail Assembly |
| 24 | 1474161 | 24-SLA1110500 Bail Assembly |
| 24C | 1419074 | 24C-SLA5500 Handle Knob Cap |
| 24D | 1417808 | 24C-CLA5000 Handle Knob Cap |

| KEY NO. | PART NO. | DESCRIPTION |
|---------|----------|---|
| 25 | 1385663 | 25-CLA8000 Bail Holder |
| 27 | 1419135 | 27-SLA9500 Rotor |
| 27 | 1419136 | 27-SLA10500 Rotor |
| 27A | 1419137 | 27A-SLA9500 Rotor Cover |
| 28 | 1419138 | 28-SLA9500 Bail Trip Lever |
| 28 | 1419139 | 28-SLA10500 Bail Trip Lever |
| 28D | 1419140 | 28D-SLA9500 Rotor Brake |
| 28E | 1294662 | 28E-SSV10500 Rotor Brake Cover |
| 31 | 1277055 | 31-SSV5500 Bail Arm Screw(2req.) |
| 32 | 1419141 | 32-SLA9500 Bail Spring |
| 34 | 1385667 | 34-CLA8000 Bail Arm |
| 34C | 1277164 | 34C-SSV7500 Pivot Arm |
| 35 | 1457805 | 35-SLA1118500HS Line Roller |
| 35A | 1457806 | 35A-SLA1118500HS Line Ball Bearing |
| 35B | 1377606 | 35A-BTL118000LC Line Roller Ball Bearing(3req.) |
| 36 | 1422399 | 36-SLA9500 Line Roller Screw |
| 36B | 1417809 | 36B-CLA6000 Bail Arm Screw Washer |
| 38 | 1419103 | 38-SLA7500 Rotor Nut |
| 38A | 1277063 | 38A-SSV5500 Rotor Nut Lock Plate Screw(7req.) |
| 38E | 1418958 | 38E-SLA3500 Pinion Gear Seal(2req.) |
| 38F | 1419143 | 38F-SLA9500 Main Shaft Seal |
| 39 | 1419144 | 39-SLA9500 Main Shaft |
| 39A | 1288190 | 39A-SSV9500 Spool Adjust Washer |
| 39B | 1422994 | 39B-SLA9500 Main Shaft Washer |
| 43 | 1419145 | 43-SLA9500 Oscillation Slider |
| 43A | 1277273 | 43A-SSV9500 Oscillation Slider Guide |
| 43B | 1277063 | 38A-SSV5500 Rotor Nut Lock Plate Screw(2req.) |
| 43F | 1419146 | 43F-SLA9500 Guide Shaft |
| 44 | 1277174 | 44-SSV7500 Main Shaft Screw(2req.) |
| 45 | 1419147 | 45-SLA9500 Body Cover |
| 45 | 1419148 | 45-SLA10500 Body Cover |
| 46 | 1277275 | 46-SSV9500 Body Cover Screw(4req.) |
| 46T | 1341500 | 3-SSV7500LC A/R Screw |
| 47 | 1419149 | 47-SLA9500 Spool Assembly |
| 47 | 1419150 | 47-SLA10500 Spool Assembly |
| 47C | 1419059 | 47C-SLA5500 Drag Cover |
| 47P | 1419152 | 47P-SLA9500 Spool |
| 47P | 1419153 | 47P-SLA10500 Spool |
| 47S | 1419154 | 47S-SLA9500 Drag Cover Seal |
| 47T | 1341544 | 47T-SSV7500LC Rear Cover Screw(3req.) |
| 47U | 1418960 | 47U-SLA3500 Drag Cover Seal |
| 47V | 1419121 | 47V-SLA9500 Spool-Main Shaft Seal |
| 47X | 1419120 | 47X-SLA9500 Drag Cover |
| 48 | 1419155 | 48-SLA9500 Spool Clicker |
| 48B | 1419156 | 48B-SLA9500 Spool Clicker Spring Screw |
| 48D | 1422400 | 48D-SLA9500 Spool Clicker Spacer Ring |
| 49 | 1419157 | 49-SLA9500 Spool Click Spring |
| 49A | 1419158 | 49A-SLA9500 Spool Click Spring Screw |
| 52 | 1419159 | 52-SLA9500 Drag Knob Assembly |
| 53S | 1293252 | 53S-SSV5500 Drag Knob Seal |
| 56 | 1415388 | 6-T2S7-1 Drag Friction Washer |
| 56A | 1415389 | 6-T2S7-2 Drag Friction Washer |
| 56T | 1277089 | 56T-SSV5500 Drag Friction Washer |
| 57 | 1419160 | 57-SLA9500 Keyed Drag Washer |
| 57T | 1419058 | 57T-SLA5500 Keyed Drag Washer |
| 74H | 1422401 | 74H-SLA9500 Rear Bushing Plate |
| 95B | 1419114 | 95B-SLA7500 Rotor Nut Locking Plate |
| 98 | 1277190 | 98-SSV7500 Clutch/Sleeve Assembly |
| 117 | 1419162 | 117-SLA9500 Drag Drive Plate |
| 132 | 1457807 | 132-SLA1118500HS Line Roller Collar |
| 225 | 1419164 | 225-SLA9500 Rear Bushing |
| 231 | 1419166 | 231-SLA9500 Oscillation Gear |
| 231A | 1419167 | 231A-SLA9500 Oscillation Gear Bushing |
| 231B | 1419168 | 231B-SLA9500 Oscillation Gear Screw |
| 231C | 1422489 | 231C-SLA9500 O/S Gear Washer |
| 233A | 1419169 | 233A-SLA9500 Handle Cap |
| 233C | 1419170 | 233C-SLA9500 Handle Cap Washer |