



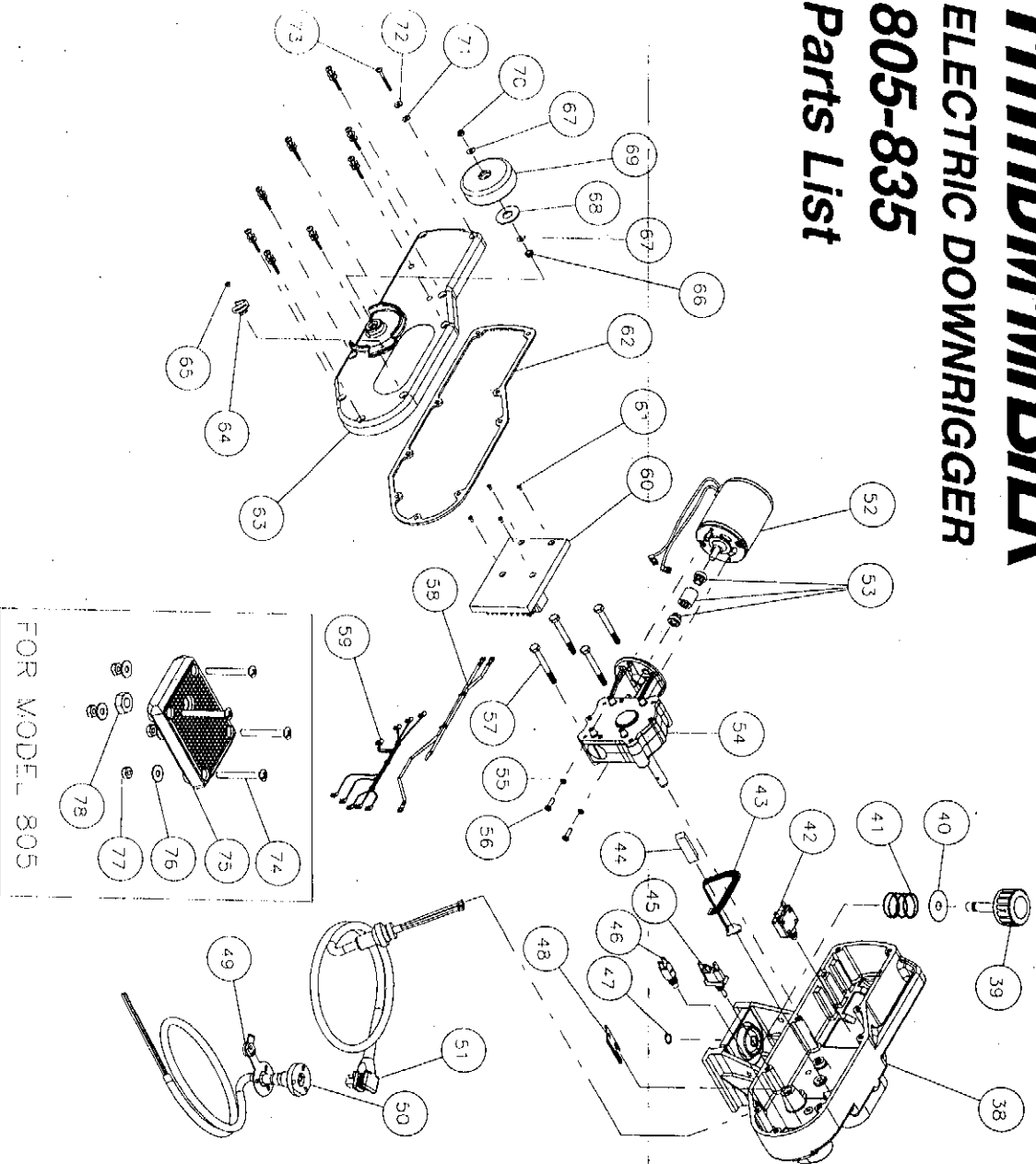
LEFT SIDE FRAME ASSEMBLY FOR MODELS 805 AND 835

FATHOM-MASTER

ELECTRIC DOWNRIGGER

805-835

Parts List



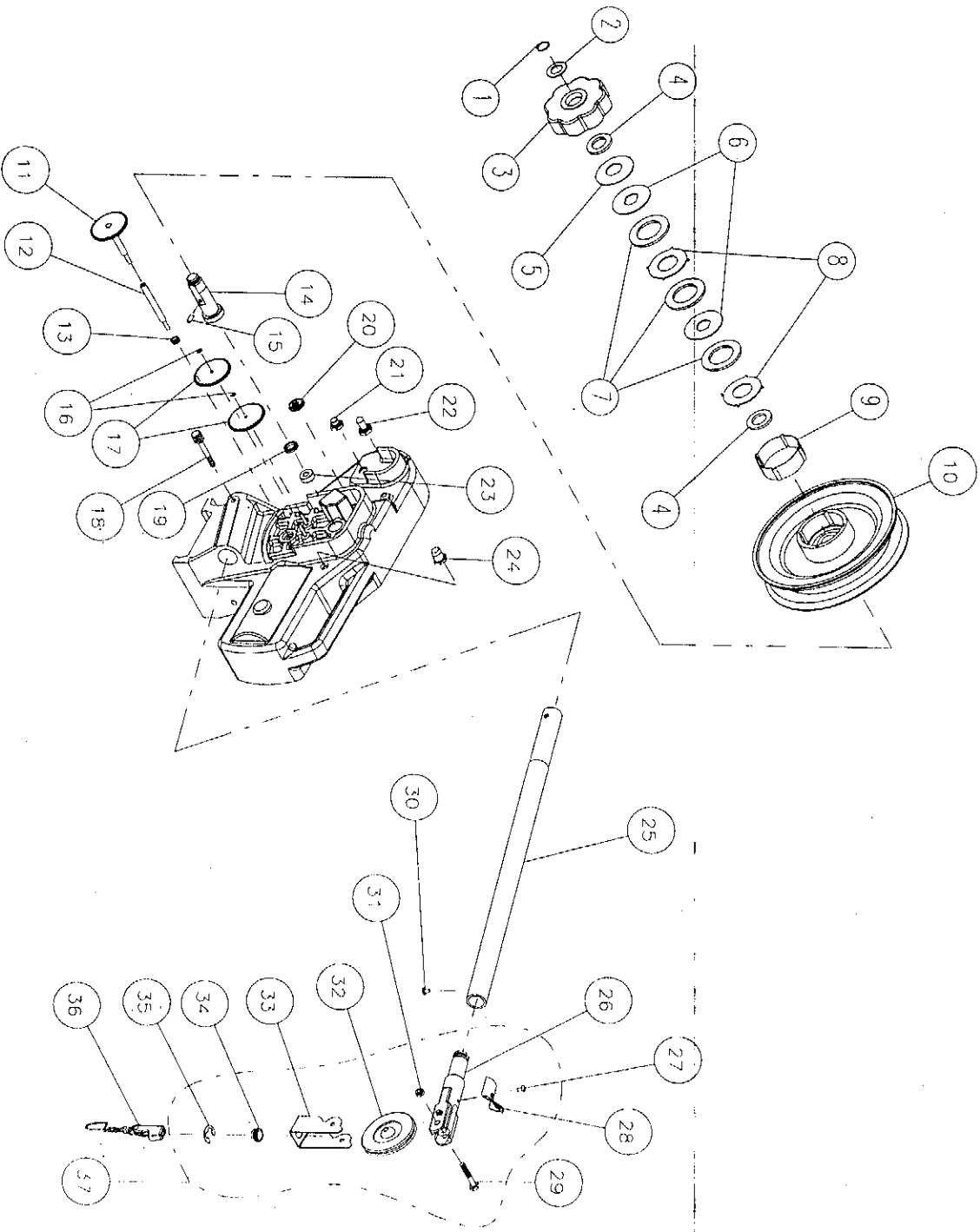
Key No.	Description
38	Frame w/Bearing & Seals
39	Hold Down Knob
40	Hold Down Knob Washer
41	Hold Down Knob Spring
42	Fuse Circuit Breaker
43	Sensor Switch Asm
44	Sensor Switch Spacer
45	Switch (Up & Down)
46	Push Button
47	Hold Down Retaining Ring
48	Power Cable Clip
49	Lower Power Cable Cap
50	Power Cable (Lower)
51	Power Cable (Upper)
52	Motor
53	Motor Shaft Coupling
54	Gear Box Complete
55	Lock Washer (2)
56	Mounting Screw (2)
57	Gear Box Mounting Screw (4)

Part No.	Description
132 805	Frame w/Bearing & Seals
184 600	Hold Down Knob
206 600	Hold Down Knob Washer
192 600	Hold Down Knob Spring
506 800	Fuse Circuit Breaker
507A805	Sensor Switch Asm
507B805	Sensor Switch Spacer
503 825	Switch (Up & Down)
503 805	Push Button
195 600	Hold Down Retaining Ring
203 800	Power Cable Clip
531 800	Lower Power Cable Cap
532 800	Power Cable (Lower)
530 800	Power Cable (Upper)
501 805	Motor
119 800	Motor Shaft Coupling
156 805	Gear Box Complete
220 805	Lock Washer (2)
032 800	Mounting Screw (2)
209 805	Gear Box Mounting Screw (4)

Key No.	Description	Part No.
58	Wiring Harness (Breaker)	515A805
59	Wiring Harness (Switch)	515 805
60	P.C. Driver Board	507 805
61	P.C. Mounting Screw	046A704
62	Frame Gasket	264 800
63	Frame Cover	227 805
64	Indicator Bracket	181A800
65	Indicator Bracket Screw	063 349
66	Counter Cup Shaft Seal	247 800
67	Counter Cup Thrust Washer (2)	247 620
68	Counter Cup Washer	190F600
69	Counter Cup	181 600
70	Counter Cup Lock Nut	200 600
71	Rubber Washers (9)	220 800
72	Flat Washer (9)	205 800
73	Cover Mounting Screw (9)	063 800
74	Base Plate Mounting Screw (4)	209 600
75	Base Plate	133 600
76	Base Plate Washer (4)	220 600
77	Base Plate Nut (4)	211 600
78	Base Plate Large Nut	193 600



RIGHT SIDE FRAME ASSEMBLY FOR MODELS 805 AND 835

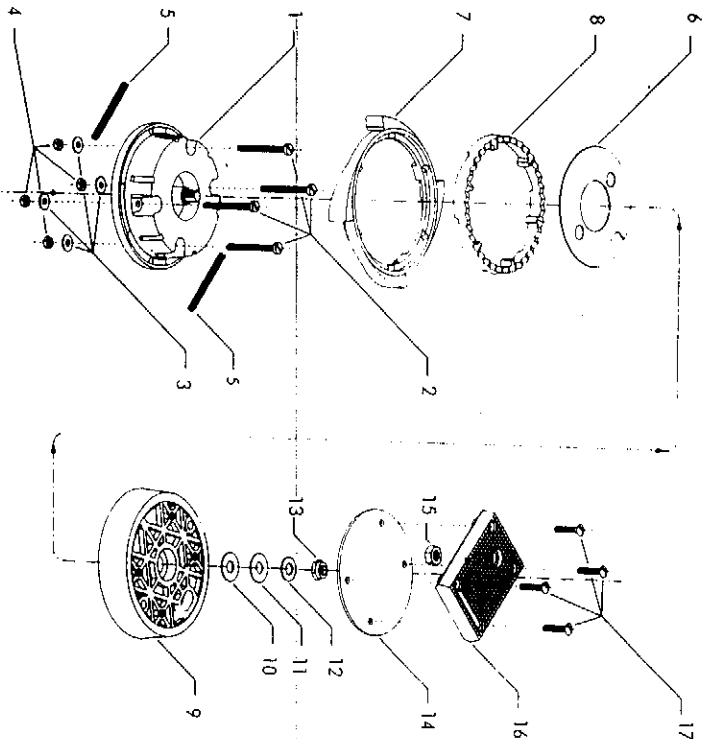


Key No.	Description
1	Main Shaft Retaining Ring
2	Star Drag Spacer
3	Drag Control Knob
4	Insulating Washer (2 req.)
5	Tension Washer
6	Key Washer (2 req.)
7	Drag Washer (3 req.)
8	Ear Washer (2 req.)
9	Thermal Insulator
10	Spool
11	Counter Cup Gear
12	Counter Cup Shaft
13	Counter Cup Shaft Seal
14	Main Sleeve
15	Main Sleeve Pin
16	Idler Gear Retaining Ring (2 req.)
17	Idler Gear (2 req.)
18	Boom Screw

Part No.	Description
195 800	Main Shaft Retaining Ring
009 800	Star Drag Spacer
010 600	Drag Control Knob
199P600	Insulating Washer (2 req.)
008 600	Tension Washer
086 600	Key Washer (2 req.)
006P600	Drag Washer (3 req.)
007 835	Ear Washer (2 req.)
191 836	Thermal Insulator
029 805	Spool
179 600	Counter Cup Gear
188 600	Counter Cup Shaft
247 800	Counter Cup Shaft Seal
098 800	Main Sleeve
102 800	Main Sleeve Pin
089B600	Idler Gear Retaining Ring (2 req.)
178 600	Idler Gear (2 req.)
194 600	Boom Screw

Key No.	Description	Part No.
19	Main Shaft Seal	245 800
20	Frame Vent Seal	247 805
21	Push Burton Boot	504 805
22	Switch Boot	504 900
23	Frame Bearing	147A800
24	Fuse Boot	505 800
25	Boom Bottom	183 800
26	Boom Tip	218 800
27	Line Guide Screw	204R820
28	Line Guide	223 836
29	Boom Pulley Screw	182 800
30	Boom Tip Screw	204P600
31	Boom Pulley Nut	208 815
32	Boom Pulley	180 600
33	Line Guide Bracket	201 620
34	Line Guide Sleeve	202 600
35	Sleeve Retaining Ring	203 600
36	Cable Hardware (Complete)	213 600SPD
37	Boom Tip (Complete)	218C820SPD

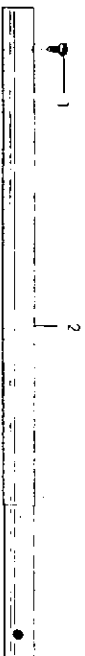
6222 SWIVEL-MATIC BASE



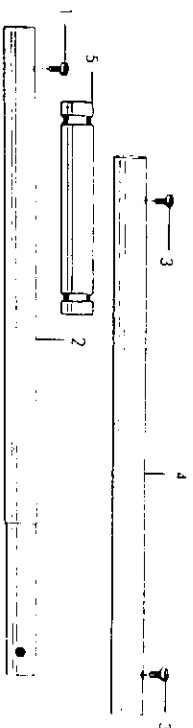
KEY NO.	DESCRIPTION	PART NO.
1	SWIVEL BASE BOTTOM	238-622
2	SWIVEL BASE MOUNTING SCREW (4)	230-620
3	MOUNTING SCREW WASHER (4)	220-600
4	MOUNTING SCREW NUT (4)	211-600
5	RETURN SPRING (2)	14-622
6	SWIVEL BASE WASHER	240-622
7	ADJUSTING RING	239A-622
8	LOCKING RING	237A-622
9	SWIVEL BASE TOP	237-622
10	SWIVEL DRAG WASHER	249-620
11	METAL DRAG WASHER	241-620
12	TENSION WASHER	18-970
13	LOCK NUT	23-130
14	SWIVEL BASE COVER	290-620
15	BASE PLATE NUT	193-600
16	BASE PLATE	133-600
17	BASE PLATE MOUNTING SCREW (4)	209-620
	BASE PLATE COMPLETE	133-600SPD
3	MOUNTING SCREW WASHER (4)	220-600
4	MOUNTING SCREW NUT (4)	211-600
15	BASE PLATE NUT	193-600
16	BASE PLATE	133-600
17	BASE PLATE MOUNTING SCREW (4)	209-620

BOOM EXTENSION

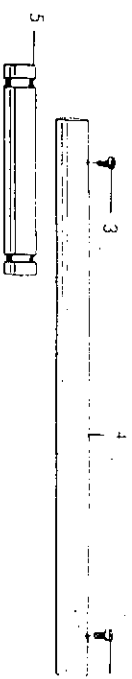
BOOM BOTTOM (24 INCH)



BOOM COMPLETE (48 INCH)



BOOM EXTENSION (FOR 24 INCH BOOM BOTTOM)



KEY NO.	DESCRIPTION	PART NO.
1	BOOM TIP SCREW	204P-600
2	BOOM BOTTOM	183-800
3	BOOM EXTENSION SCREW (2)	204P-820
4	BOOM EXTENSION	183-820
5	BOOM STUD (CENTER)	219-820