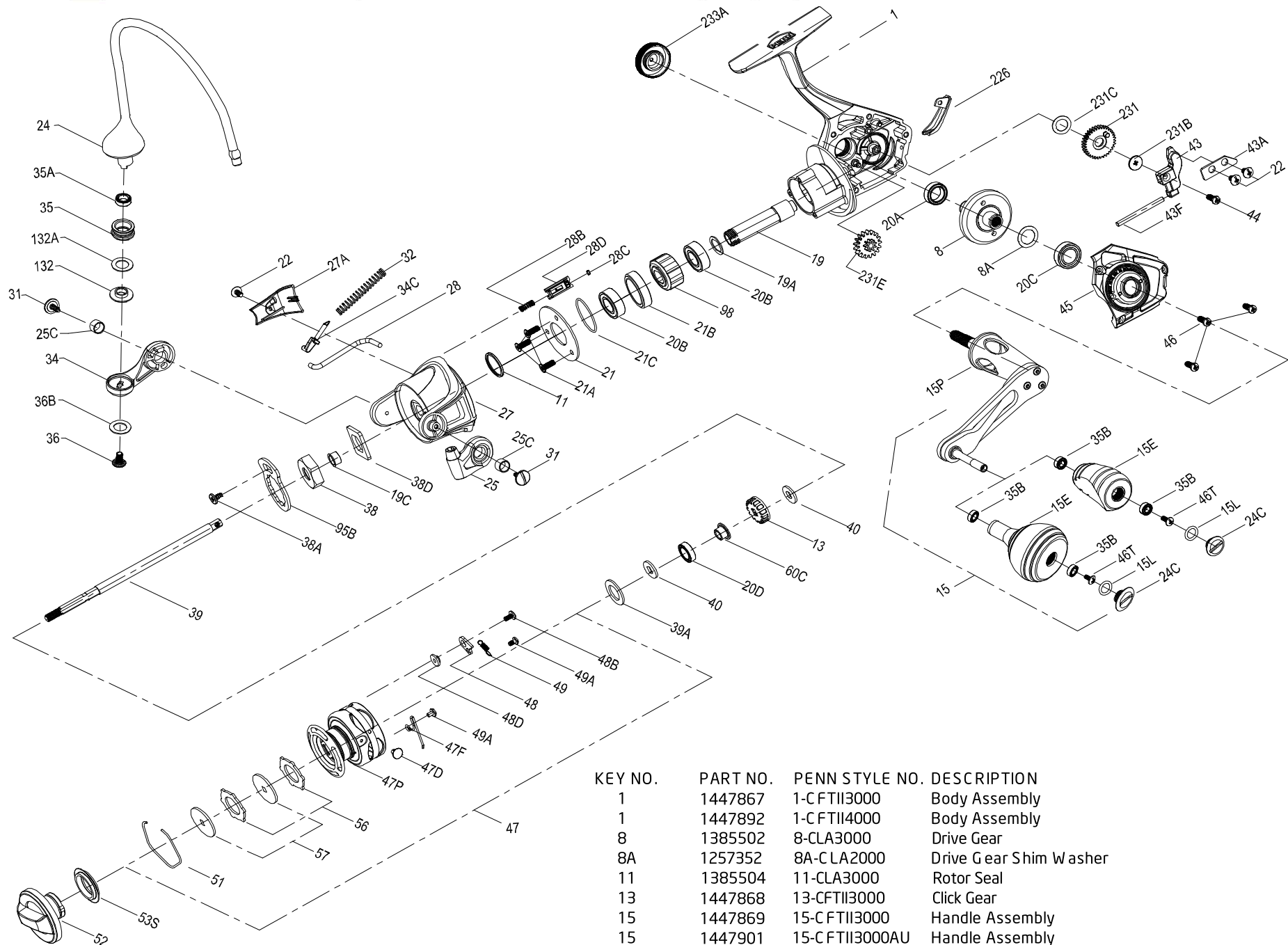


# PENN PARTS LIST FOR MODEL CFTII3000/CFTII3000AU/CFTII4000/CFTII4000AU

**WARNING:** Cancer and Reproductive Harm – [www.P65Warnings.ca.gov/products](http://www.P65Warnings.ca.gov/products)



KEY NO.	PART NO.	PENN STYLE NO.	DESCRIPTION
24	1447875	24-CFTII3000	Bail Assembly
24	1447893	24-CFTII4000	Bail Assembly
24C	1525920	24C-CFTII1000	Handle Knob Cap
24C	1527174	24C-CFTII4000AU	Handle Knob Cap
25	1385539	25-CLA3000	Bail Holder
25C	1385540	25C-CLA3000	Bail Holder Bushing
27	1447876	27-CFTII3000	Rotor
27	1447894	27-CFTII4000	Rotor
27A	1447877	27A-CFTII3000	Rotor Cover
27A	1447895	27A-CFTII4000	Rotor Cover
28	1385543	28-CLA3000	Rotor Trip Lever
28	1385544	28-CLA4000	Rotor Trip Lever
28B	1385546	28B-CLA3000	Rotor Brake Spring
28C	1385547	28C-CLA3000	Rotor Brake Seal
28D	1385545	28D-CLA3000	Rotor Brake
31	1385548	31-CLA3000	Bail Arm Screw
32	1385549	32-CLA3000	Bail Spring
34	1385550	34-CLA3000	Bail Arm
34C	1385551	34C-CLA3000	Pivot Arm
35	1447878	35-CFTII3000	Line Roller
35A	1418992	35A-SLA3500	Line Roller Bushing
35B	1418393	35B-CLA3000	Ball Bearing
36	1277061	36-SSV5500	Line Roller Screw
36B	1417809	36B-CLA6000	Bail Arm Screw Washer
38	1447850	38-CFTII2000	Nut
38A	1385624	38A-CLA2000	Rotor Nut Lock Plate Screw
38D	1385555	38D-CLA3000	Rotor Washer
39	1447879	39-CFTII3000	Main Shaft
39	1447896	39-CFTII4000	Main Shaft
39A	1385627	39A-CLA2000	Spool Adjust Washer
40	1447880	40-CFTII3000	Washer
43	1385561	43-CLA3000	Oscillation Slider
43A	1447881	43A-CFTII3000	Slider Retainer Plate
43F	1447882	43F-CFTII3000	Guide Shaft
44	1385564	44-CLA3000	Main Shaft Screw
45	1447883	45-CFTII3000	Body Cover
45	1447897	45-CFTII4000	Body Cover
46	1447884	46-CFTII3000	Screw
46T	1341500	3-SSV7500LC	Handle Knob Screw
47	1447885	47-CFTII3000	Spool Assembly
47	1447898	47-CFTII4000	Spool Assembly
47D	1276953	47D-SSV3500	Line Hook
47F	1385572	47F-C LA3000	Line C lip Retainer
47P	1447886	47P-CFTII3000	Spool
47P	1447899	47P-CFTII4000	Spool
48	1385578	48-CLA3000	Spool Click Plate
48B	1385581	48B-CLA3000	Spool Clicker Spring Screw
48D	1385579	48D-CLA3000	Spool Clicker Spacer Ring
49	1385580	49-C LA3000	Spool Clicker Spring
49A	1341547	49A-SSV7500LC	Spool Clicker Spring Screw
51	1277085	51-SSV5500	Drag Washer Retainer
52	1447887	52-CFTII3000	Drag Knob Assembly
53S	1447888	53S-CFTII3000	Drag Knob Seal
56	1385584	56-C LA3000	Drag Friction Washer
57	1447889	57-CFTII3000	Washer
60C	1385603	60C-CLA2000	Spool Support Sleeve
95B	1385647	95B-CLA2000	Rotor Nut Locking Plate
98	1276966	98-SSV3500	Clutch/Sleeve Assembly
132	1447900	132-CFTII4000	Line Roller Collar
132A	1277097	132A-SSV5500	Line Roller Washer
226	1447890	226-CFTII3000	Rear Cover
231	1385592	231-CLA3000	Oscillation Gear
231	1385593	231-CLA4000	Oscillation Gear
231B	1447891	231B-CFTII3000	Screw
231C	1385594	231C-CLA2000	Oscillation Gear Washer
231E	1385597	231E-CLA4000	Slow Oscillation Gear
233A	1516063	233A-CFTII2000	Handle Cap

KEY NO.	PART NO.	PENN STYLE NO.	DESCRIPTION
1	1447867	1-CFTII3000	Body Assembly
1	1447892	1-CFTII4000	Body Assembly
8	1385502	8-CLA3000	Drive Gear
8A	1257352	8A-C LA2000	Drive Gear Shim Washer
11	1385504	11-CLA3000	Rotor Seal
13	1447868	13-CFTII3000	Click Gear
15	1447869	15-C FTII3000	Handle Assembly
15	1447901	15-C FTII3000AU	Handle Assembly
15E	1447870	15E-CFTII3000	Handle Knob
15E	1417807	15E-CLA3000AU	Handle Knob
15L	1447871	15L-C FTII3000	Handle Knob Seal
15L	1417804	15L-C LA2000	Handle Knob Seal
15P	1447872	15P-CFTII3000	Sub-Handle Assembly
19	1496532	19-CFTII3000	Pinion Gear
19A	1277424	19A-SSV3500	Pinion Gear Washer
19C	1385529	19C-C LA2000	Pinion Gear Bushing
20A	1385530	20A-C LA3000	Sealed Ball Bearing
20B	1385531	20B-C LA3000	Sealed Ball Bearing
20C	1385532	20C-C LA3000	Sealed Ball Bearing
20D	1385604	20D-C LA2000	Sealed Ball Bearing
21	1385534	21-C LA3000	Ball Bearing Retainer
21A	1276926	21A-SSV3500	Ball Bearing Retainer Screw
21B	1385535	21B-C LA3000	Pinion Ball Bearing Collar
21C	1385536	21C-C LA3000	Pinion Bearing Collar Seal
22	1122148	22-C LA3000	Rotor Cover Screw

407-C FTII3000-3000AU-4000-4000AU Rev.04 11-18-19  
 1422310--CFTII3000  
 1430513--CFTII3000AU  
 1422311--CFTII4000  
 1430514--CFTII4000AU