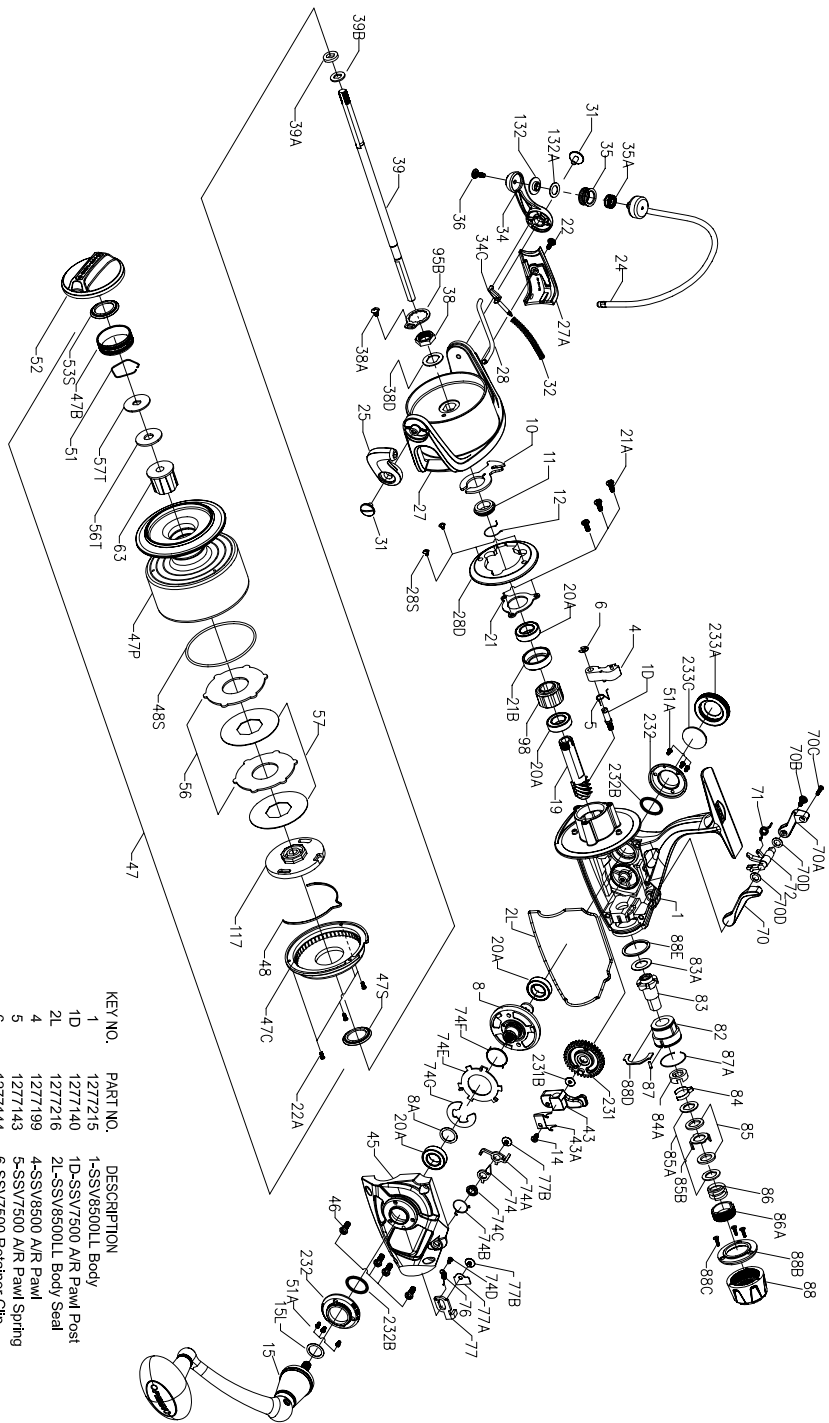




PARTS LIST FOR MODEL SSV8500LL



407-SSV8500LL Rev5 10-01-14
1259880

KEY NO.	PART NO.	DESCRIPTION	KEY NO.	PART NO.	DESCRIPTION
1	1277215	1-SSV8500LL Body	34	1277163	34-SSV7500 Ball Arm
1D	1277140	1D-SSV7500 AIR Pawl Post	34C	1277164	34C-SSV7500 Pivot Arm
2L	1277216	2L-SSV8500LL Body Seal	35	1277165	35-SSV7500 Line Roller
4	1277199	4-SSV8500 AIR Pawl	35A	1277060	35A-SSV5500 Line Roller Ball Bearing
5	1277143	5-SSV7500 AIR Pawl Spring	36	1277166	36-SSV7500 Line Roller Screw
6	1277144	6-SSV7500 Retainer Clip	38	1277167	38-SSV7500 Rotor Nut
8	1277217	8-SSV8500LL Drive Gear	38A	1277063	38A-SSV5500 Rotor Nut Lock Plate Screw
8A	1277146	8A-SSV7500 Drive Gear Shim Washer	39	1277219	39-SSV8500LL Main Shaft
10	1277147	10-SSV7500 AIR Pawl Holder	39A	1277170	39A-SSV7500 Spool Adjust Washer
11	1277148	11-SSV7500 AIR Bushing	39B	1277171	39B-SSV7500 Main Shaft Washer
12	1277149	12-SSV7500 AIR Bushing Spring	43	1277220	43-SSV8500LL Oscillation Slider
14	1276992	14-SSV6500LL Oscillation Slider Retainer Screw	43A	1277221	43A-SSV8500LL Oscillation Slider Guide
15	1277150	15-SSV7500 Handle Assembly	45	1277222	45-SSV8500LL Body Cover
15L	1292784	15L-SSV7500 Handle Seal	46	1277176	46-SSV7500 Body Cover Screw (4 req.)
19	1277218	19-SSV8500LL Pinion Gear	47	1277223	47-SSV8500LL Spool Assembly
20A	1277152	20A-SSV7500 Ball Bearing (2 req.)	47B	1277208	47B-SSV8500 Spool Band
20A	1344681	20A-SSV7500 Sealed Ball Bearing (2 req.)	47C	1277178	47C-SSV7500 Drag Cover
21	1277153	21-SSV7500 Pinion Bearing Retainer	47P	1277224	47P-SSV8500LL Spool
21A	1277154	21A-SSV7500 Pinion Retainer Screw (3 req.)	47S	1277082	47S-SSV7500 Drag Drive Plate Seal
21B	1277155	21B-SSV7500 Pinion Retainer Screw (3 req.)	48	1277181	48-SSV7500 Spool Clicker
22	1277046	22-SSV6500 Rotor Cover Screw	48S	1277182	48S-SSV7500 Drag Cover Seal
22A	1277047	22A-SSV6500 Drag Cover Screw (3 req.)	51	1277085	51-SSV5500 Drag Washer Retainer
24	1277200	24-SSV6500 Ball Assembly	51A	1277183	51A-SSV7500 Bearing Retainer Screw (6 req.)
25	1277157	25-SSV7500 Ball Holder	52	1277211	52-SSV8500 Drag Knob Assembly
27	1277201	27-SSV8500 Rotor	53S	1293253	53S-SSV7500 Drag Knob Seal
27A	1277202	27A-SSV8500 Rotor Cover	56	1277185	56-SSV7500 Drag Friction Washer (2 req.)
28	1277203	28-SSV8500 Ball Trip Lever	56T	1277089	56T-SSV5500 Drag Friction Washer
28D	1277204	28D-SSV8500 Rotor Brake	57	1277186	57-SSV7500 Keyed Drag Washer (2 req.)
28S	1277054	28S-SSV3500 Rotor Brake Screw (2 req.)	57T	1277187	57T-SSV7500 Keyed Drag Washer
31	1277055	31-SSV5500 Ball Arm Screw (2 req.)	63	1277212	63-SSV8500 Spool Bushing
32	1277162	32-SSV7500 Ball Spring	70	1277225	70-SSV8500LL Live Liner Drag Switch Lever (Left)
			70A	1277226	70A-SSV8500LL Live Liner Drag Switch Lever (Right)
			70B	1277128	70B-SSV6500LL Live Liner Drag Switch Lever (Right)
			70C	1277003	70C-SSV4500LL Live Liner Drag Switch Lever Screw
			70D	1301988	70D-SSV8500LL LL Lever Seal (2 req.)
			71	1277227	71-SSV8500LL Live Liner Lever Spring
			72	1277228	72-SSV8500LL Live Liner Drag Switch Cam
			74	1277007	74-SSV4500LL Live Liner Trip Lever (A)
			74A	1277229	74A-SSV8500LL Live Liner Trip Lever (B)
			74B	1322920	74B-SSV8500LL Live Liner Trip Lever Spring
			74C	1277010	74C-SSV4500LL Live Liner Trip Lever Bushing
			74D	1277011	74D-SSV4500LL Live Liner Trip Lever Spring Screw
			74E	1277230	74E-SSV8500LL Live Liner Three Pawl Lever
			74F	1277231	74F-SSV8500LL Live Liner Three Pawl Lever Spring
			74G	1277232	74G-SSV8500LL Live Liner Three Pawl Lever E-Clip
			76	1277134	76-SSV8500LL Live Liner Claw Spring
			77	1277233	77-SSV8500LL Live Liner Stop Claw
			77A	1289724	77A-SSV8500LL Live Liner Plate
			77B	1277234	77B-SSV4500LL Live Liner Plate
			82	1277235	82-SSV8500LL Rear Drag Housing
			83	1277236	83-SSV8500LL Rear Drag Hatchet
			83A	1277237	83A-SSV8500LL Rear Drag Ratchet Washer
			84	1277238	84-SSV8500LL Rear Drag Clicker
			84A	1277239	84A-SSV8500LL Rear Drag Clicker Retainer
			85	1277240	85-SSV8500LL Rear Drag Washer (2 req.)
			85A	1277241	85A-SSV8500LL Rear Drag Keyed Washer (2 req.)
			85B	1277242	85B-SSV8500LL Rear Drag Earad Washer
			86	1277243	86-SSV8500LL Rear Drag Spring
			86A	1277244	86A-SSV8500LL Rear Drag Knob Clicker
			87	1277245	87-SSV4500LL Rear Drag Knob
			87A	1277246	87A-SSV8500LL Rear Drag Knob Clicker Ring
			88	1277247	88-SSV8500LL Rear Drag Knob
			88B	1277248	88B-SSV8500LL Rear Drag Knob Ring
			88C	1277249	88C-SSV8500LL Rear Drag Knob Ring Screw (3 req.)
			88D	1277250	88D-SSV8500LL Rear Drag Knob Retainer
			88E	1277251	88E-SSV8500LL Rear Drag Knob Seal
			95B	1277189	95B-SSV7500 Rotor Nut Locking Plate
			98	1277190	98-SSV7500 Clutch / Sleeve Assembly
			117	1277191	117-SSV7500 Drag Drive Plate
			132	1277192	132-SSV7500 Line Roller Collar
			132A	1277097	132A-SSV5500 Line Roller Washer
			231	1277213	231-SSV8500 Oscillation Gear
			231B	1277100	231B-SSV5500 Oscillation Gear Screw
			232	1277214	232-SSV8500 Bearing Retainer (2 req.)
			232B	1302603	232B-SSV7500 Bearing Retainer O - Ring (2 req.)
			233A	1277196	233A-SSV7500 Handle Cap
			233C	1277197	233C-SSV7500 Handle Cap Washer