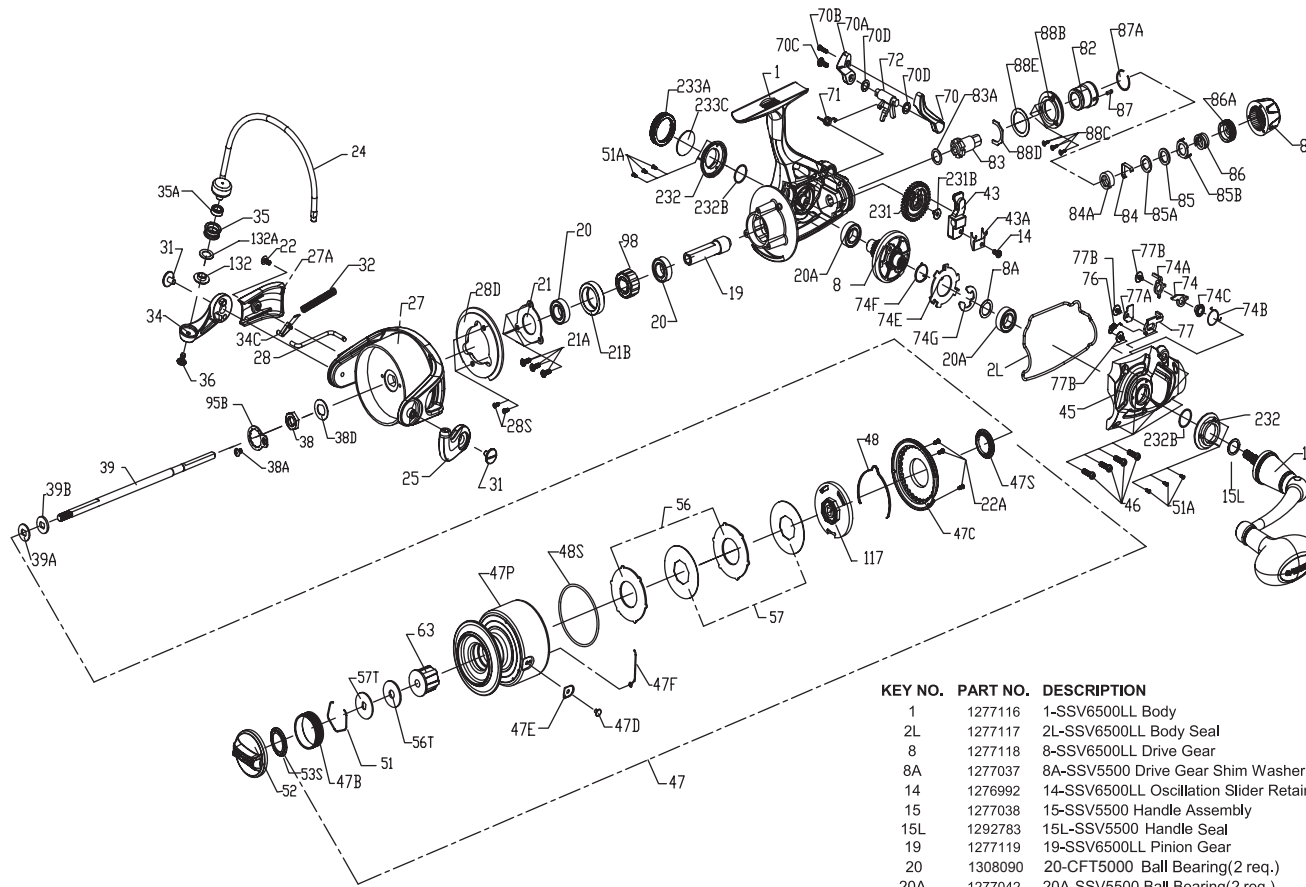




# PARTS LIST FOR MODEL SSV6500LL



KEY NO.	PART NO.	DESCRIPTION
1	1277116	1-SSV6500LL Body
2L	1277117	2L-SSV6500LL Body Seal
8	1277118	8-SSV6500LL Drive Gear
8A	1277037	8A-SSV5500 Drive Gear Shim Washer
14	1276992	14-SSV6500LL Oscillation Slider Retainer Screw
15	1277038	15-SSV5500 Handle Assembly
15L	1292783	15L-SSV5500 Handle Seal
19	1277119	19-SSV6500LL Pinion Gear
20	1308090	20-CFT5000 Ball Bearing(2 req.)
20A	1277042	20A-SSV5500 Ball Bearing(2 req.)
21	1277043	21-SSV5500 Pinion Bearing Retainer
21A	1277044	21A-SSV5500 Pinion Retainer Screw (3 req.)
21B	1277045	21B-SSV5500 Pinion Ball Bearing Collar
22	1277046	22-SSV5500 Rotor Cover Screw
22A	1277047	22A-SSV5500 Drag Cover Screw (3 req.)
24	1277106	24-SSV6500 Bail Assembly
25	1277049	25-SSV5500 Bail Holder
27	1277107	27-SSV6500 Rotor
27A	1277108	27A-SSV6500 Rotor Cover
28	1277052	28-SSV5500 Bail Trip Lever
28D	1277109	28D-SSV6500 Rotor Brake
28S	1277054	28S-SSV5500 Rotor Brake Screw (2 req.)
31	1277055	31-SSV5500 Bail Arm Screw (2 req.)
32	1277056	32-SSV5500 Bail Spring
34	1277057	34-SSV5500 Bail Arm
34C	1277058	34C-SSV5500 Pivot Arm
35	1277059	35-SSV5500 Line Roller
35A	1277060	35A-SSV5500 Line Roller Ball Bearing
36	1277061	36-SSV5500 Line Roller Screw
38	1277062	38-SSV5500 Rotor Nut
38A	1277063	38A-SSV5500 Rotor Nut Lock Plate Screw
38D	1277064	38D-SSV5500 Rotor Washer
39	1277120	39-SSV6500LL Main Shaft
39A	1277066	39A-SSV5500 Spool Adjust Washer

KEY NO.	PART NO.	DESCRIPTION
39B	1277067	39B-SSV5500 Main Shaft Washer
43	1277121	43-SSV6500LL Oscillation Slider
43A	1277122	43A-SSV6500LL Oscillation Slider Guide
45	1277123	45-SSV6500LL Body Cover
46	1277074	46-SSV5500 Body Cover Screw (4 req.)
47	1277124	47-SSV6500LL Spool Assembly
47B	1277076	47B-SSV5500 Spool Band
47C	1277077	47C-SSV5500 Drag Cover
47D	1277078	47D-SSV5500 Line Clip
47E	1277079	47E-SSV5500 Line Clip Bushing
47F	1277112	47F-SSV6500 Line Clip Retainer
47P	1277125	47P-SSV6500LL Spool
47S	1277082	47S-SSV5500 Drag Drive Plate Seal
48	1277083	48-SSV5500 Spool Clicker
48S	1277084	48S-SSV5500 Drag Cover Seal
51	1277085	51-SSV5500 Drag Washer Retainer
51A	1277086	51A-SSV5500 Bearing Retainer Screw (6 req.)
52	1277114	52-SSV6500 Drag Knob Assembly
53S	1293252	53S-SSV5500 Drag Knob Seal
56	1277088	56-SSV5500 Drag Friction Washer (2 req.)
56T	1277089	56T-SSV5500 Drag Friction Washer
57	1277090	57-SSV5500 Keyed Drag Washer (2 req.)
57T	1277091	57T-SSV5500 Keyed Drag Washer
63	1277092	63-SSV5500 Spool Bushing
70	1277126	70-SSV6500LL Live Liner Drag Switch Lever (Left)
70A	1277127	70A-SSV6500LL Live Liner Drag Switch Lever (Right)
70B	1277128	70B-SSV6500LL Live Liner Drag Switch Lever Screw
70C	1277003	70C-SSV4500LL Live Liner Drag Switch Lever Screw
70D	1301987	70D-SSV6500LL LL Lever Seal (2 req.)
71	1277129	71-SSV6500LL Live Liner Lever Spring
72	1277130	72-SSV6500LL Live Liner Drag Switch Cam
74	1322919	74-SSV6500LL Live Liner Trip Lever (A)
74A	1277131	74A-SSV6500LL Live Liner Trip Lever (B)
74B	1322920	74B-SSV6500LL Live Liner Trip Lever Spring
74C	1277010	74C-SSV4500LL Live Liner Trip Lever Bushing
74E	1277132	74E-SSV6500LL Live Liner Three Pawl Lever
74F	1277133	74F-SSV6500LL Live Liner Three Pawl Lever Spring
74G	1277014	74G-SSV4500LL Live Liner Three Pawl Lever E-Clip
76	1277134	76-SSV6500LL Live Liner Claw Spring
77	1277135	77-SSV6500LL Live Liner Stop Claw
77A	1277136	77A-SSV6500LL Live Liner Plate
77B	1289972	77B-SSV4500LL Live Liner Plate Screw(3 req.)
82	1277017	82-SSV4500LL Rear Drag Housing
83	1277137	83-SSV6500LL Rear Drag Ratchet
83A	1277019	83A-SSV4500LL Rear Drag Ratchet Washer
84	1277020	84-SSV4500LL Rear Drag Clicker
84A	1277021	84A-SSV4500LL Rear Drag Clicker Retainer
85	1277022	85-SSV4500LL Rear Drag Washer
85A	1277023	85A-SSV4500LL Rear Drag Keyed Washer
85B	1277024	85B-SSV4500LL Rear Drag Eared Washer
86	1277025	86-SSV4500LL Rear Drag Spring
86A	1277026	86A-SSV4500LL Rear Drag Nut
87	1277027	87-SSV4500LL Rear Drag Knob Clicker
87A	1277028	87A-SSV4500LL Rear Drag Knob Clicker Ring
88	1277029	88-SSV4500LL Rear Drag Knob
88B	1277030	88B-SSV4500LL Rear Drag Knob Ring
88C	1277031	88C-SSV4500LL Rear Drag Knob Ring Screw (3 req.)
88D	1277032	88D-SSV4500LL Rear Drag Knob Retainer
88E	1277033	88E-SSV4500LL Rear Drag Knob Seal
95B	1277093	95B-SSV5500 Rotor Nut Locking Plate
98	1277094	98-SSV5500 Clutch / Sleeve Assembly
117	1277095	117-SSV5500 Drag Drive Plate
132	1277096	132-SSV5500 Line Roller Collar
132A	1277097	132A-SSV5500 Line Roller Washer
231	1277098	231-SSV5500 Oscillation Gear
231B	1277100	231B-SSV5500 Oscillation Gear Screw
232	1277115	232-SSV6500 Bearing Retainer (2 req.)
232B	1302502	232B-SSV3500 Bearing Retainer O - Ring(2 req.)
233A	1277103	233A-SSV5500 Handle Retainer Cap
233C	1277104	233C-SSV5500 Handle Cap Washer