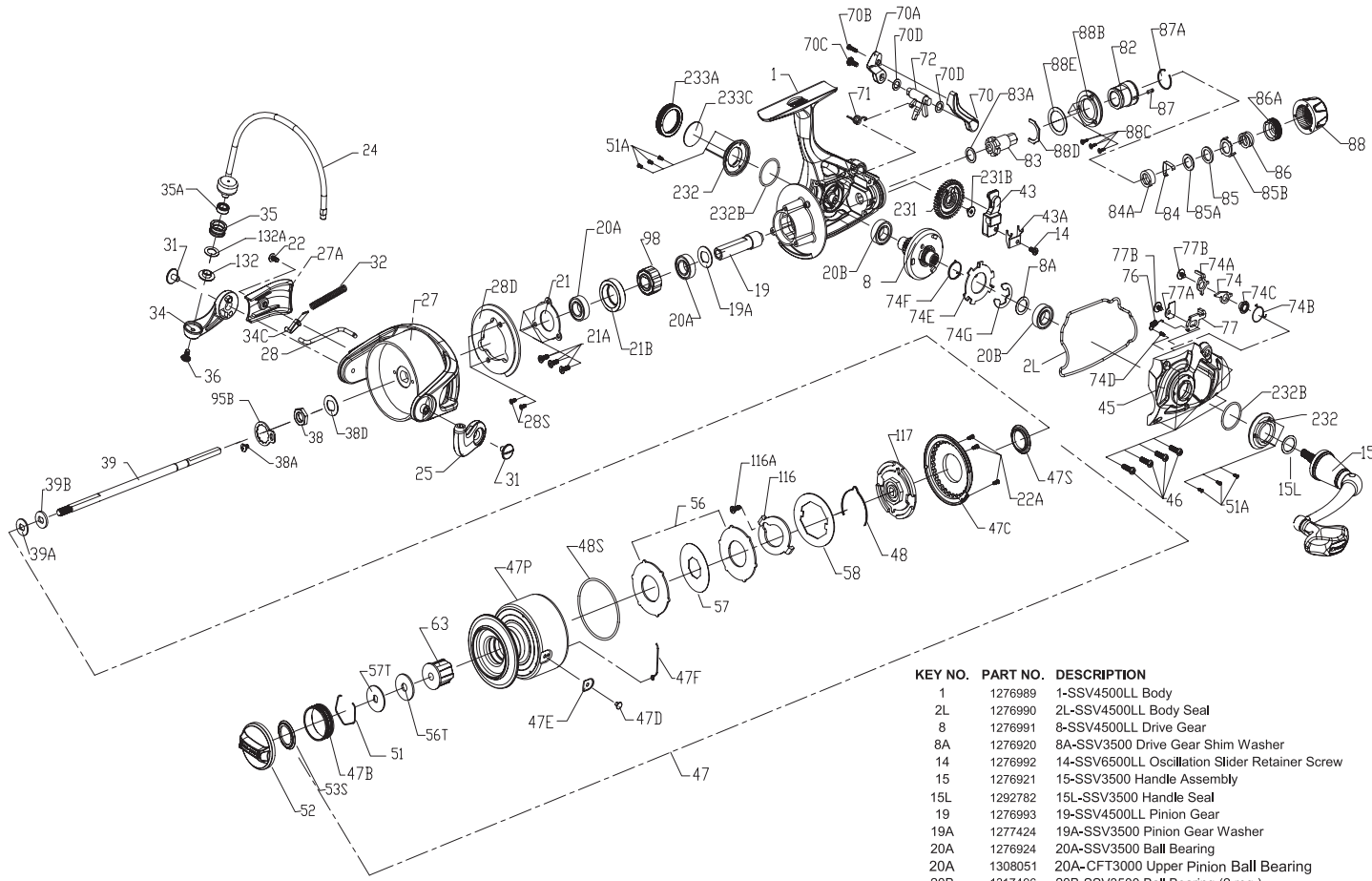




PARTS LIST FOR MODEL SSV4500LL



KEY NO.	PART NO.	DESCRIPTION
39	1276994	39-SSV4500LL Main Shaft
39A	1276944	39A-SSV3500 Spool Adjust Washer
39B	1276945	39B-SSV3500 Main Shaft Washer
43	1276995	43-SSV4500LL Oscillation Slider
43A	1276996	43A-SSV4500LL Oscillation Slider Guide
45	1276997	45-SSV4500LL Body Cover
46	1276949	46-SSV3500 Body Cover Screw (4 req.)
47	1276998	47-SSV4500LL Spool Assembly
47B	1277076	47B-SSV5500 Spool Band
47C	1276952	47C-SSV3500 Drag Cover
47D	1276953	47D-SSV3500 Line Clip
47E	1276954	47E-SSV3500 Line Clip Bushing
47F	1276983	47F-SSV4500 Line Clip Retainer
47P	1276999	47P-SSV4500LL Spool
47S	1277082	47S-SSV5500 Drag Drive Plate Seal
48	1276957	48-SSV3500 Spool Clicker
48S	1276958	48S-SSV3500 Drag Cover Seal
51	1277085	51-SSV5500 Drag Washer Retainer
51A	1277086	51A-SSV5500 Bearing Retainer Screw (6 req.)
52	1276960	52-SSV3500 Drag Knob Assembly
53S	1293250	53S-SSV3500 Drag Knob Seal
56	1276961	56-SSV3500 Drag Friction Washer (2 req.)
56T	1277089	56T-SSV5500 Drag Friction Washer
57	1276963	57-SSV3500 Keyed Drag Washer
57T	1276985	57T-SSV4500 Keyed Drag Washer
58	1290705	58-SSV3500 Drag Eared Washer
63	1276986	63-SSV4500 Spool Bushing
70	1277000	70-SSV4500LL Live Liner Drag Switch Lever (Left)
70A	1277001	70A-SSV4500LL Live Liner Drag Switch Lever (Right)
70B	1277002	70B-SSV4500LL Live Liner Drag Switch Lever Screw
70C	1277003	70C-SSV4500LL Live Liner Drag Switch Lever Screw
70D	1277004	70D-SSV4500LL LL Lever Seal (2 req.)
71	1277005	71-SSV4500LL Live Liner Lever Spring
72	1277006	72-SSV4500LL Live Liner Drag Switch Cam
74	1277007	74-SSV4500LL Live Liner Trip Lever (A)
74A	1277008	74A-SSV4500LL Live Liner Trip Lever (B)
74B	1277009	74B-SSV4500LL Live Liner Trip Lever Spring
74C	1277010	74C-SSV4500LL Live Liner Trip Lever Bushing
74D	1277011	74D-SSV4500LL Live Liner Stop Claw Spring Screw
74E	1277012	74E-SSV4500LL Live Liner Three Pawl Lever
74F	1277013	74F-SSV4500LL Live Liner Three Pawl Lever Spring
74G	1277014	74G-SSV4500LL Live Liner Three Pawl Lever E-Clip
76	1277134	76-SSV6500LL Live Liner Claw Spring
77	1277015	77-SSV4500LL Live Liner Stop Claw
77A	1277016	77A-SSV4500LL Live Liner Plate
77B	1289972	77B-SSV4500LL Live Liner Plate Screw(2 req.)
82	1277017	82-SSV4500LL Rear Drag Housing
83	1277018	83-SSV4500LL Rear Drag Ratchet
83A	1277019	83A-SSV4500LL Rear Drag Ratchet Washer
84	1277020	84-SSV4500LL Rear Drag Clicker
84A	1277021	84A-SSV4500LL Rear Drag Clicker Retainer
85	1277022	85-SSV4500LL Rear Drag Washer
85A	1277023	85A-SSV4500LL Rear Drag Keyed Washer
85B	1277024	85B-SSV4500LL Rear Drag Eared Washer
86	1277025	86-SSV4500LL Rear Drag Spring
86A	1277026	86A-SSV4500LL Rear Drag Nut
87	1277027	87-SSV4500LL Rear Drag Knob Clicker
87A	1277028	87A-SSV4500LL Rear Drag Knob Clicker Ring
88	1277029	88-SSV4500LL Rear Drag Knob
88B	1277030	88B-SSV4500LL Rear Drag Knob Ring
88C	1277031	88C-SSV4500LL Rear Drag Knob Ring Screw (3 req.)
88D	1277032	88D-SSV4500LL Rear Drag Knob Retainer
88E	1277033	88E-SSV4500LL Rear Drag Knob Seal
95B	1277093	95B-SSV5500 Rotor Nut Locking Plate
98	1276966	98-SSV3500 Clutch / Sleeve Assembly
116	1279458	116-SSV3500 Keyed Drag Washer Lock Plate
116A	1279509	116A-SSV3500 Keyed Drag Washer Lock Plate Screw
117	1276967	117-SSV3500 Drag Drive Plate
132	1277096	132-SSV5500 Line Roller Collar
132A	1277097	132A-SSV5500 Line Roller Washer
231	1276987	231-SSV4500 Oscillation Gear
231B	1307857	231B-SSV3500 Oscillation Gear Screw
232	1276988	232-SSV4500 Bearing Retainer (2 req.)
232B	1302502	232B-SSV3500 Bearing Retainer O - Ring (2 req.)
233A	1276972	233A-SSV3500 Handle Cap
233C	1276973	233C-SSV3500 Handle Cap Washer