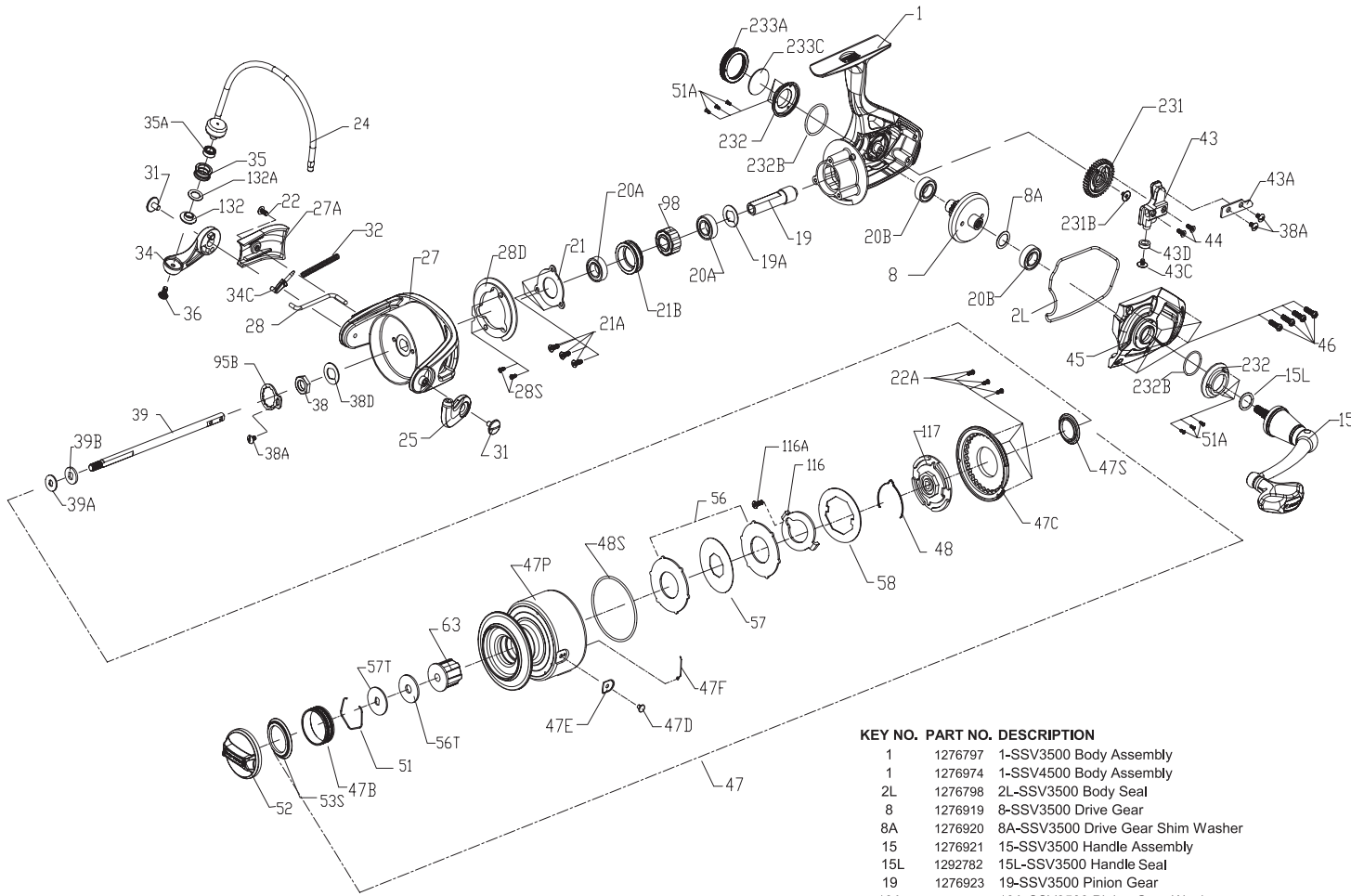




PARTS LIST FOR MODEL SSV3500/SSV4500



KEY NO.	PART NO.	DESCRIPTION
28D	1276934	28D-SSV3500 Rotor Brake
28D	1276979	28D-SSV4500 Rotor Brake
28S	1276935	28S-SSV3500 Rotor Brake Screw (2 req.)
31	1276936	31-SSV3500 Bail Arm Screw (2 req.)
32	1276937	32-SSV3500 Bail Spring
34	1276938	34-SSV3500 Bail Arm
34C	1277058	34C-SSV5500 Pivot Arm
35	1276939	35-SSV3500 Line Roller
35A	1276940	35A-SSV3500 Line Roller Ball Bearing
36	1277061	36-SSV5500 Line Roller Screw
38	1276941	38-SSV3500 Rotor Nut
38A	1277063	38A-SSV5500 Rotor Nut Lock Plate Screw (3 req.)
38D	1276942	38D-SSV3500 Rotor Washer
39	1276943	39-SSV3500 Main Shaft
39	1276980	39-SSV4500 Main Shaft
39A	1276944	39A-SSV3500 Spool Adjust Washer
39B	1276945	39B-SSV3500 Main Shaft Washer
43	1276946	43-SSV3500 Oscillation Slider
43A	1276947	43A-SSV3500 Oscillation Slider Guide
43C	1277071	43C-SSV5500 Oscillation Slider Bushing Screw
43D	1279457	43D-SSV3500 Oscillation Slider Bushing
44	1277072	44-SSV5500 Main Shaft Screw (2 req.)
45	1276948	45-SSV3500 Body Cover
45	1276981	45-SSV4500 Body Cover
46	1276949	46-SSV3500 Body Cover Screw (4 req.)
47	1276950	47-SSV3500 Spool Assembly
47	1276982	47-SSV4500 Spool Assembly
47B	1276951	47B-SSV3500 Spool Band
47B	1277076	47B-SSV5500 Spool Band
47C	1276952	47C-SSV3500 Drag Cover
47D	1276953	47D-SSV3500 Line Clip
47E	1276954	47E-SSV3500 Line Clip Bushing
47F	1276955	47F-SSV3500 Line Clip Retainer
47F	1276983	47F-SSV4500 Line Clip Retainer
47P	1276956	47P-SSV3500 Spool
47P	1276984	47P-SSV4500 Spool
47S	1277082	47S-SSV5500 Drag Drive Plate Seal
48	1276957	48-SSV3500 Spool Clicker
48S	1276958	48S-SSV3500 Drag Cover Seal
51	1276959	51-SSV3500 Drag Washer Retainer
51	1277085	51-SSV5500 Drag Washer Retainer
51A	1277086	51A-SSV5500 Bearing Retainer Screw (6 req.)
52	1276960	52-SSV3500 Drag Knob Assembly
53S	1293250	53S-SSV3500 Drag Knob Seal
56	1276961	56-SSV3500 Drag Friction Washer (2 req.)
56T	1276962	56T-SSV3500 Drag Friction Washer
56T	1277089	56T-SSV5500 Drag Friction Washer
57	1276963	57-SSV3500 Keyed Drag Washer
57T	1276964	57T-SSV3500 Keyed Drag Washer
57T	1276985	57T-SSV4500 Keyed Drag Washer
58	1290705	58-SSV3500 Drag Eared Washer
63	1276965	63-SSV3500 Spool Bushing
63	1276986	63-SSV4500 Spool Bushing
95B	1277093	95B-SSV5500 Rotor Nut Locking Plate
98	1276966	98-SSV3500 Clutch / Sleeve Assembly
116	1279458	116-SSV3500 Keyed Drag Washer Lock Plate
116A	1279509	116A-SSV3500 Keyed Drag Washer Lock Plate Screw
117	1276967	117-SSV3500 Drag Drive Plate
132	1277096	132-SSV5500 Line Roller Collar
132A	1277097	132A-SSV5500 Line Roller Washer
231	1276968	231-SSV3500 Oscillation Gear
231	1276987	231-SSV4500 Oscillation Gear
231B	1307857	231B-SSV3500 Oscillation Gear Screw
232	1276970	232-SSV3500 Bearing Retainer (2 req.)
232	1276988	232-SSV4500 Bearing Retainer (2 req.)
232B	1302502	232B-SSV3500 Bearing Retainer O - Ring(2 req.)
233A	1276972	233A-SSV3500 Handle Cap
233C	1276973	233C-SSV3500 Handle Cap Washer

KEY NO.	PART NO.	DESCRIPTION
1	1276797	1-SSV3500 Body Assembly
1	1276974	1-SSV4500 Body Assembly
2L	1276798	2L-SSV3500 Body Seal
8	1276919	8-SSV3500 Drive Gear
8A	1276920	8A-SSV3500 Drive Gear Shim Washer
15	1276921	15-SSV3500 Handle Assembly
15L	1292782	15L-SSV3500 Handle Seal
19	1276923	19-SSV3500 Pinion Gear
19A	1277424	19A-SSV3500 Pinion Gear Washer
20A	1276924	20A-SSV3500 Ball Bearing
20A	1308051	20A-CFT3000 Upper Pinion Ball Bearing
20B	1317496	20B-SSV3500 Ball Bearing (2 req.)
21	1276925	21-SSV3500 Pinion Bearing Retainer
21A	1276926	21A-SSV3500 Pinion Retainer Screw (3 req.)
21B	1276927	21B-SSV3500 Pinion Ball Bearing Collar
22	1276928	22-SSV3500 Rotor Cover Screw
22A	1277047	22A-SSV5500 Drag Cover Screw (3 req.)
24	1276929	24-SSV3500 Bail Assembly
24	1276975	24-SSV4500 Bail Assembly
25	1276930	25-SSV3500 Bail Holder
27	1276931	27-SSV3500 Rotor
27	1276976	27-SSV4500 Rotor
27A	1276932	27A-SSV3500 Rotor Cover
27A	1276977	27A-SSV4500 Rotor Cover
28	1276933	28-SSV3500 Bail Trip Lever
28	1276978	28-SSV4500 Bail Trip Lever