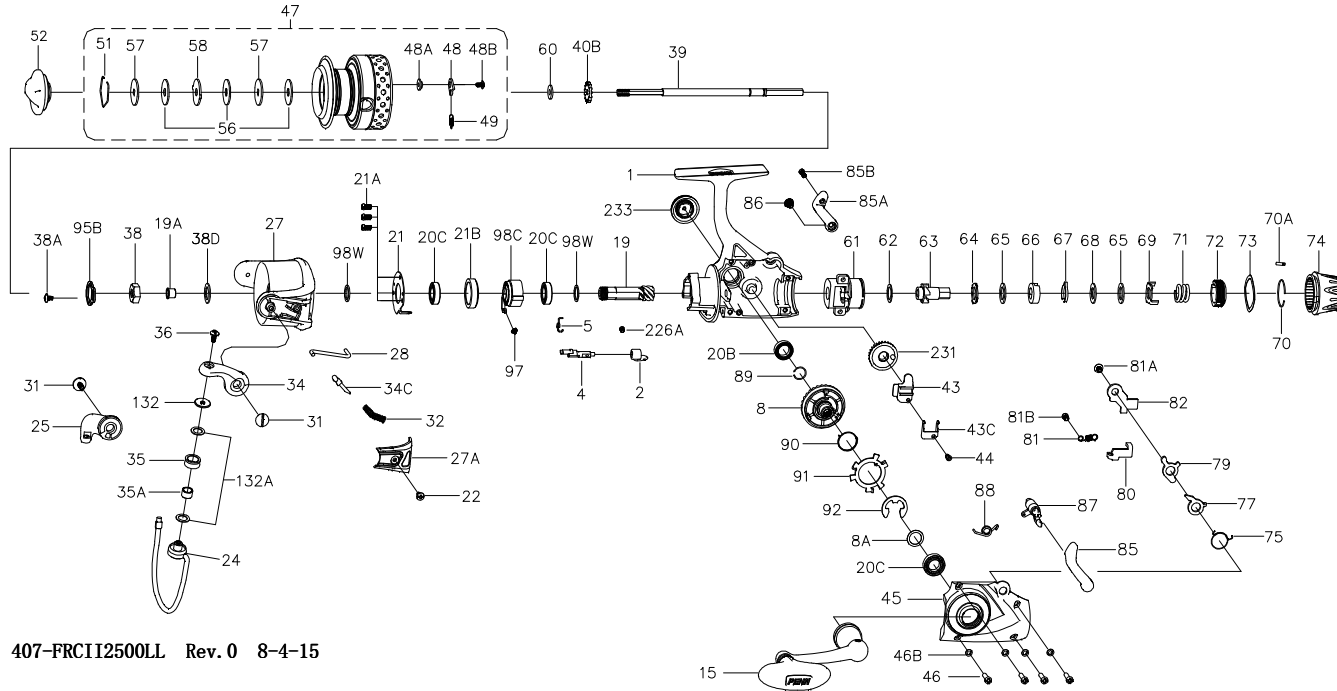




**PARTS LIST FOR MODEL FRCII2500LL**



407-FRCII2500LL Rev. 0 8-4-15

1364046

KEY NO.	PART NO.	DESCRIPTION
1	1380460	1-FRCII2500LL Housing Assembly
2	1380461	2-FRCII2500LL A/R Lever
4	1313805	4-CFT2500 A/R Shaft
5	1313806	5-CFT2500 A/R Spring
8	1371350	8-FRCII4000LL Main Gear
8A	1191028	8A-3000SG Shim
15	1380462	15-FRCII2500LL Handle Assembly
19	1380463	19-FRCII2500LL Pinion Gear
19A	1191252	19A-3000SG Pinion Bushing
20B	1203974	20B-3000PUR Housing Ball Bearing
20C	1203975	20C-3000PUR Ball Bearing (3 req)
21	1192629	21-2000SG Bearing Retainer
21A	1192644	21A-3000SG Bearing Retainer Screw (3 req)
21B	1192646	21B-2000SG Collar
22	1203978	22-3000PUR Bail Pivot Cover Screw
24	1313809	24-CFT2500 Bail Wire
25	1313810	25-CFT2500 Bail Holder
27	1365719	27-FRCII2500 Rotor

KEY NO.	PART NO.	DESCRIPTION
27A	1313812	27A-CFT2500 Bail Pivot Cover
28	1313813	28-CFT2500 Trip Lever
31	1313814	31-CFT2500 Bail Arm Screw (2 req)
32	1191583	32-2000SG Bail Spring
34	1313815	34-CFT2500 Bail Arm
34C	1313816	34C-CFT2500 Pivot Arm
35	1313817	35-CFT2500 Line Roller
35A	1313818	35A-CFT2500 Line Roller Bushing
36	1251748	36-1000FRC Bail Stud Screw
38	1191727	38-2000SG Rotor Nut
38A	1203995	38A-3000PUR Rotor Locking Plate Screw
38D	1308070	38D-CFT3000 Rotor Nut Washer
39	1380464	39-FRCII2500LL Main Shaft
40B	1191778	40B-2000SG Click Ratchet
43	1380465	43-FRCII2500LL Crosswind Block
43C	1371353	43C-FRCII4000LL Main Shaft Holder
44	1371354	44-FRCII4000LL Crosswind Block Screw
45	1380466	45-FRCII2500LL Housing Cover Assembly
46	1371356	46-FRCII4000LL Housing Cover Screw (4 req)
46B	1191907	46B-3000SG Housing Cover Washer (4 req)
47	1380467	47-FRCII2500LL Spool Assembly
48	1211604	48-3000SG Click Tongue

KEY NO.	PART NO.	DESCRIPTION
48A	1214226	48A-3000SG Click Tongue Washer
48B	1214189	48B-3000SG Spool Click Screw
49	1211605	49-3000SG Click Tongue Spring
51	1313823	51-CFT2500 Drag Retaining Ring
52	1365717	52-FRCII2000 Drag Knob Assembly
56	1192033	56-2000SG Drag Washer (3 req)
57	1192041	57-2000SG Keyed Washer (2 req)
58	1192049	58-2000SG Eared Washer
60	1192059	60-2000SG Thrust Washer
61	1380468	61-FRCII2500LL Rear Drag Bracket
62	1371358	62-FRCII4000LL Washer
63	1371359	63-FRCII4000LL Ratchet
64	1371360	64-FRCII4000LL Eared Washer
65	1371361	65-FRCII4000LL Friction Washer (2 req)
66	1371362	66-FRCII4000LL Click Spring Sleeve
67	1371363	67-FRCII4000LL Click Spring
68	1371364	68-FRCII4000LL Keyed Drag Washer
69	1371365	69-FRCII4000LL Eared Washer
70	1371366	70-FRCII4000LL Retaining Ring
70A	1371367	70A-FRCII4000LL Click Pin
71	1371368	71-FRCII4000LL Rear Drag Spring
72	1371369	72-FRCII4000LL Drag Sleeve
73	1371370	73-FRCII4000LL Spring Washer
74	1380469	74-FRCII2500LL Rear Drag
75	1371372	75-FRCII4000LL Release Pawl Spring
77	1380470	77-FRCII2500LL Release Pawl
79	1380471	79-FRCII2500LL Return pawl
80	1380472	80-FRCII2500LL N-R Pawl
81	1380473	81-FRCII2500LL N-R Pawl Spring
81A	1371377	81A-FRCII4000LL Screw
81B	1380474	81B-FRCII2500LL Screw
82	1380475	82-FRCII2500LL Retaining Plate
85	1380476	85-FRCII2500LL Left Lever
85A	1380477	85A-FRCII2500LL Right Lever
85B	1371381	85B-FRCII4000LL Screw
86	1371382	86-FRCII4000LL Screw
87	1380478	87-FRCII2500LL Lever Bar
88	1380479	88-FRCII2500LL Lever Spring
89	1371385	89-FRCII4000LL Retaining Ring
90	1371386	90-FRCII4000LL Release Spring
91	1371387	91-FRCII4000LL Release Plate
92	1371388	92-FRCII4000LL Retaining Washer
95B	1308081	95B-CFT3000 Rotor Locking Plate
97	1192189	97-2000SG Clutch Spring
98C	1192211	98C-2000SG Clutch/Sleeve Assembly
98W	1204004	98W-3000PUR Clutch Washer (2 req)
132	1364008	132-BTLII2500 Roller Washer
132A	1192301	132A-2000SG Line Roller Washer (2 req)
226A	1192473	226A-3000SG Screw
231	1313828	231-CFT2500 Crosswind Gear
233	1211667	233-3000FRC Bearing Cover Assembly