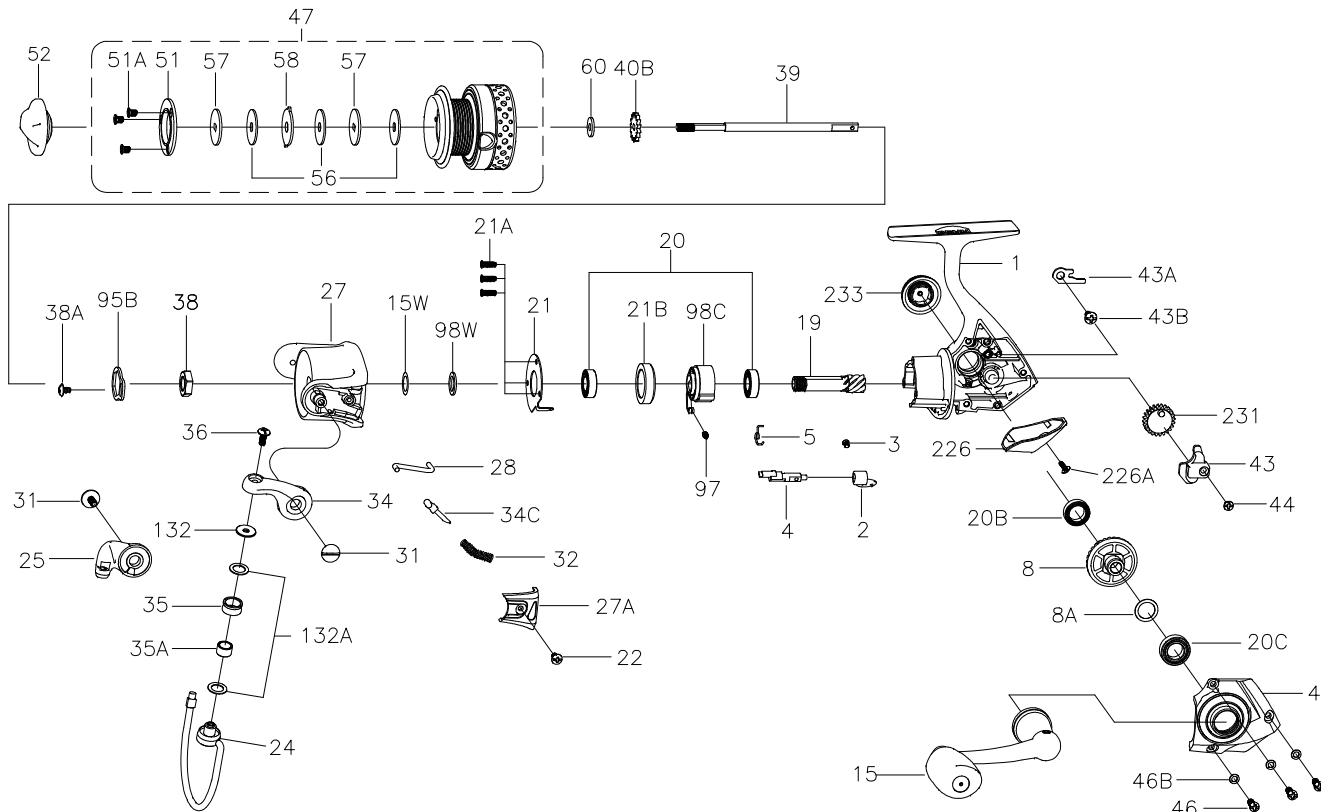




PARTS LIST FOR MODEL FRCII1000



| KEY NO. | PART NO. | DESCRIPTION |
|---------|----------|---|
| 21A | 1207723 | 21A-1000SG Bearing Retainer Screw (3 req) |
| 21B | 1313845 | 21B-CFT1000 Collar |
| 22 | 1203978 | 22-3000PUR Bail Pivot Cover Screw |
| 24 | 1313846 | 24-CFT1000 Bail Wire |
| 25 | 1313847 | 25-CFT1000 Bail Holder |
| 27 | 1365538 | 27-FRCII1000 Rotor |
| 27A | 1313849 | 27A-CFT1000 Bail Pivot Cover |
| 28 | 1313850 | 28-CFT1000 Trip Lever |
| 31 | 1313814 | 31-CFT2500 Bail Arm Screw (2 req) |
| 32 | 1191583 | 32-2000SG Bail Spring |
| 34 | 1313851 | 34-CFT1000 Bail Arm |
| 34C | 1313816 | 34C-CFT2500 Pivot Arm |
| 35 | 1313852 | 35-CFT1000 Line Roller |
| 35A | 1313818 | 35A-CFT2500 Line Roller Bushing |
| 36 | 1251748 | 36-1000FRC Bail Stud Screw |
| 38 | 1313853 | 38-CFT1000 Rotor Nut |
| 38A | 1203995 | 38A-3000PUR Rotor Locking Plate Screw |
| 39 | 1313854 | 39-CFT1000 Main Shaft |
| 40B | 1191778 | 40B-2000SG Click Ratchet |
| 43 | 1207729 | 43-1000SG Crosswind Block |
| 43A | 1207730 | 43A-1000SG Crosswind Block Plate |
| 43B | 1191826 | 43B-3000SG Crosswind Block Plate Screw |
| 44 | 1191843 | 44-3000SG Crosswind Block Screw |
| 45 | 1365709 | 45-FRCII1000 Housing Cover Assembly |
| 46 | 1251750 | 46-1000FRC Housing Cover Screw (3 req) |
| 46B | 1191907 | 46B-3000SG Housing Cover Washer (3 req) |
| 47 | 1365710 | 47-FRCII1000 Spool Assembly |
| 51 | 1211578 | 51-2000BTL Retaining Spacer |
| 51A | 1191986 | 51A-3000SG Retaining Screw (3 req) |
| 52 | 1365711 | 52-FRCII1000 Drag Knob Assembly |
| 56 | 1192033 | 56-2000SG Drag Washer (3 req) |
| 57 | 1251753 | 57-1000FRC Keyed Washer (2 req) |
| 58 | 1192049 | 58-2000SG Eared Washer |
| 60 | 1192059 | 60-2000SG Thrust Washer |
| 95B | 1308081 | 95B-CFT3000 Rotor Locking Plate |
| 97 | 1192189 | 97-2000SG Clutch Spring |
| 98C | 1207734 | 98C-1000SG Clutch/Sleeve Assembly |
| 98W | 1338206 | 98W-SGII1000 Clutch Washer |
| 132 | 1313860 | 132-CFT1000 Roller Washer |
| 132A | 1192301 | 132A-2000SG Line Roller Washer (2 req) |
| 226 | 1313861 | 226-CFT1000 Rear Cover |
| 226A | 1192473 | 226A-3000SG Rear Cover Screw |
| 231 | 1207737 | 231-1000SG Crosswind Gear |
| 233 | 1211667 | 233-3000FRC Bearing Cover Assembly |

| KEY NO. | PART NO. | DESCRIPTION |
|---------|----------|--|
| 1 | 1365535 | 1-FRCII1000 Housing Assembly |
| 2 | 1190889 | 2-2000SG A/R Lever |
| 3 | 1190922 | 3-2000SG A/R Lever Screw |
| 4 | 1313805 | 4-CFT2500 A/R Shaft |
| 5 | 1313839 | 5-CFT1000 A/R Spring |
| 8 | 1313840 | 8-CFT1000 Main Gear |
| 8A | 1191028 | 8A-3000SG Shim |
| 15 | 1365536 | 15-FRCII1000 Handle Assembly |
| 15W | 1316415 | 15W-CFT5000 Washer |
| 19 | 1313842 | 19-CFT1000 Pinion Gear |
| 20 | 1365537 | 20-FRCII1000 Ball Bearing (2 req) |
| 20B | 1203974 | 20B-3000PUR Housing Ball Bearing |
| 20C | 1203975 | 20C-3000PUR Housing Cover Ball Bearing |
| 21 | 1313844 | 21-CFT1000 Bearing Retainer |

407-FRCII1000 Rev.0 8-19-2014

1364031