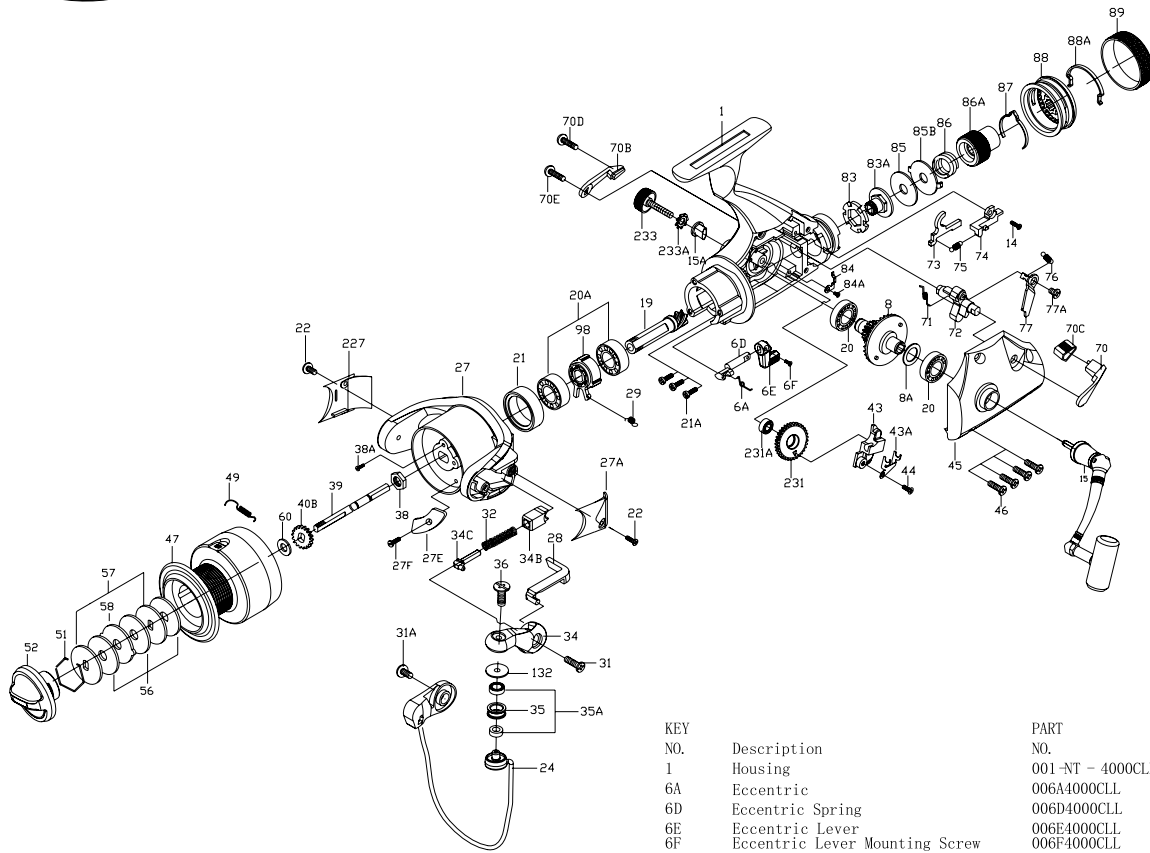




PARTS LIST FOR MODEL CLL4000



KEY NO.	Description	PART NO.
1	Housing	001-NT - 4000CLL
6A	Eccentric	006A4000CLL
6D	Eccentric Spring	006D4000CLL
6E	Eccentric Lever	006E4000CLL
6F	Eccentric Lever Mounting Screw	006F4000CLL
8	Main Gear Assembly	008 4000CLL
8A	Main Gear Shim	008A500CV
14	Screw	014 4000CV
15	Handle Assembly	015 N 4000CV
15A	Handle Retaining Bushing	015A500CV
19	Pinion Gear	019 4000CLL
20	Housing Ball Bearing (2 req.)	020 500CV
20A	Pinion Ball Bearing (2 req.)	020A500CV
21	Collar	021 4000CV
21A	Bearing Mounting Screws (3 req.)	021A2000CV
22	Cover Screw (2 req.)	022 500CV
24	Bail Wire	024 4000CL L
27	Rotor Cup	027 4000CLL
27A	Bail Pivot Cover	027A 4000CV
27E	Balance Weight	027E4000CV

KEY NO.	Description	PART NO.
27F	Balance Weight Screw	027F2000CV
28	Trip Lever	028 4000CV
29	Spring	029 2000CV
31	Bail Arm Screw	031 2000CV
31A	Bail Wire Screw	031A2000CV
32	Bail Spring	032 4000CV
34	Bail Arm	034 4000CV
34B	Pivot Guide	034B4000CV
34C	Pivot Arm	034C4000CV
35	Line Roller	035 2000CV
35A	Line Roller Ball Bearing(2 req)	035A2000CV
36	Bail Stud Screw	036 2000CV
38	Rotor Nut	038 2000CV
38A	Rotor Nut Screw	038A2000CV
39	Spool Shaft	039 4000CLL
40B	Click Ratchet	040B2000CV
43	Crosswind Block	043 4000CLL
43A	Spool Shaft Click	043A4000CLL
44	Crosswind Block Screw	044 2000CV
45	Housing Cover	045-NT -4000CLL
46	Housing Cover Screw(4 req)	046 4000CLL
47	Spool Assembly	047 4000CLL
49	Click Spring	049 2000CV
51	Retaining Ring	051 2000CV
52	Drag Knob	052 2000CV
56	Friction Drag Washer (3 req)	056 2000CV
57	Keyed Washer(2 req)	057 2000CV
58	Drag Washer Earred	058 2000CV
60	Thrust Washer	060 2000CV
70	L. S. Liveline Eccentric Lever	070 4000CLL
70B	R. S. Liveline Eccentric Lever	070B4000CLL
70C	(Mid) Liveline Eccentric Lever	070C4000CLL
70D	Liveline Eccentric Lever Screw	070D4000CLL
70E	Liveline Eccentric Lever Screw	070E4000CLL
71	Liveline Eccentric Spring	071 4000CLL
72	Liveline Eccentric	072 4000CLL
73	Liveline plate	073 4000CLL
74	Liveline Dog	074 4000CLL
75	Dog Spring	075 4000CLL
76	Trip Spring	076 4000CLL
77	Eccentric Trip	077 4000CLL
77A	Eccentric Trip Screw	077A4000CLL
83	Rear Drag Ratchet	083 4000CLL
83A	Rear Ratchet Insert	083A4000CLL
84	Rear Drag Click	084 4000CLL
84A	Click Spring Screw	084A4000CLL
85	Rear Drag Washer	085 4000CLL
85B	Rear Earred Washer	085B 4000CLL
86	Rear Drag Spring	086 4000CLL
86A	Rear Drag Nut	086A4000CLL
87	Rear Click Spring	087 4000CLL
88	Rear Drag Knob	088 4000CLL
88A	Rear Drag Knob Retainer	088A4000CLL
89	Rear Drag Knob Grip	089 4000CLL
98	Clutch Retainer	098 4000CLL
132	Line Roller Washer	132 2000CV
227	Cam Cover	227 4000CV
231	Crosswind Gear	231 4000CLL
231A	Crosswind Gear Ball Bearing	020 500CV
233	Bearing Cover	233 N 2000CV
233A	Bearing Cover Washer	233A 2000CV