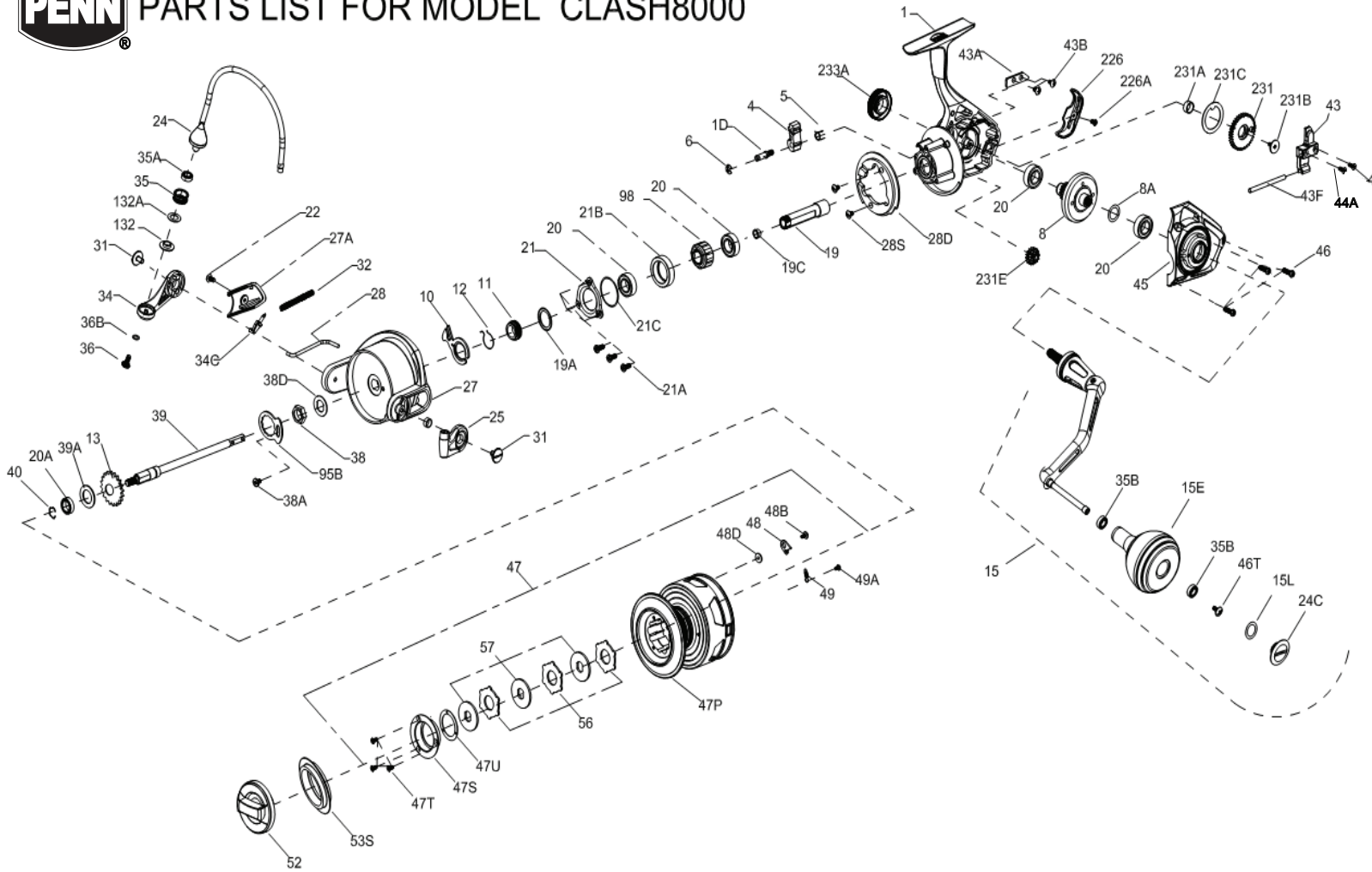




# PARTS LIST FOR MODEL CLASH8000



**KEY NO. PART NO. DESCRIPTION**

1	1385655	1-CLA8000 Body Assembly
1D	1277140	1D-SSV7500 A/R Pawl Post
4	1277142	4-SSV7500 A/R Pawl
5	1277143	5-SSV7500 Pawl Spring
6	1277144	6-SSV7500 Retainer Clip
8	1385656	8-CLA8000 Drive Gear
8A	1277037	8A-SSV5500 Drive Gear Shim Washer
10	1277147	10-SSV7500 A/R Pawl Holder
11	1288189	11-SSV9500 A/R Bushing
12	1277149	12-SSV7500 A/R Bushing Spring
13	1339489	13-CLA5000 Spool Click Gear
15	1385657	15-CLA8000 Handle Assembly
15E	1418244	15E-CLA6000 Handle Knob
15L	1417804	15L-CLA2000 Handle Knob Seal

**KEY NO. PART NO. DESCRIPTION**

19	1385658	19-CLA8000 Pinion Gear
19A	1393330	19A-CLA8000 Pinion Seal
19C	1385683	19C-CLA8000 Pinion Gear Bushing
20	1277152	20A-SSV7500 Ball Bearing(4req.)
20A	1385530	20A-CLA3000 Sealed Ball Bearing
21	1277262	21-SSV9500 Pinion Bearing Retainer
21A	1277154	21A-SSV7500 Pinion Retainer Screw (3req.)
21B	1385660	21B-CLA8000 Pinion Ball Bearing Collar
21C	1385684	21C-CLA8000 Pinion Ball Bearing Collar Seal
22	1277046	22-SSV5500 Rotor Cover Screw
24	1385662	24-CLA8000 Ball Assembly
24C	1417808	24C-CLA5000-Handle Knob Cap
25	1385663	25-CLA8000 Ball Holder
27	1385664	27-CLA8000 Rotor

**KEY NO. PART NO. DESCRIPTION**

27A	1385665	27A-CLA8000 Rotor Cover
28	1385666	28-CLA8000 Trip Lever
28D	1277161	28D-SSV7500 Rotor Brake
28S	1277054	28S-SSV5500 Rotor Brake Screw(2req.)
31	1277055	31-SSV5500 Ball Arm Screw (2req.)
32	1277162	32-SSV7500 Ball Spring
34	1385667	34-CLA8000 Ball Arm
34C	1277164	34C-SSV7500 Pivot Arm
35	1277165	35-SSV7500 Line Roller
35A	1277060	35A-SSV5500 Line Roller Ball Bearing
35B	1377606	35B-BTLI8000LC Line Roller Ball Bearing(2req.)
36	1277166	36-SSV7500 Line Roller Screw
36B	1417809	36B-CLA6000-Ball Arm Screw Washer
38	1385668	38-CLA8000 Rotor Nut
38A	1385669	38A-CLA8000 Rotor Nut Lock Plate Screw
38D	1277168	38D-SSV7500 Rotor Washer
39	1385670	39-CLA8000 Main Shaft
39A	1339525	39A-CLA5000 Spool Adjust Washer
40	1339529	40-CLA5000 Main Shaft Bearing Lock Spring
43	1385671	43-CLA8000 O/S Slider
43A	1277173	43A-SSV7500 O/S Slider Guide
43B	1277070	43B-SSV5500 O/S Slider Guide Screw(2req.)
43F	1385694	43F-CLA8000 O/S Slider Guide Shaft
44	1385672	44-CLA8000 Main Shaft Screw
44A	1447691	44A-SLAI18500HS Screw
45	1385674	45-CLA8000 Body Cover
46	1277074	46-SSV5500 Body Cover Screw (3req.)
46T	1341500	3-SSV7500LC A/R Button Screw
47	1385675	47-CLA8000 Spool Assembly
47P	1393331	47P-CLA8000 Spool With Carbon Ring
47S	1385698	47S-CLA8000 Drag Cover
47U	1428242	47U-CLA8000 Drag Cover Seal
47T	1385661	47T-CLA8000 Drag Cover Screw(3req.)
48	1385578	48-CLA3000 Spool Click Plate
48B	1385581	48B-CLA3000 Spool Clicker Spring Screw
48D	1385579	48D-CLA3000 Spool Clicker Spacer Ring
49	1385580	49-CLA3000 Spool Click Spring
49A	1341547	49A-SSV7500LC Spool Clicker Spring Screw
52	1385676	52-CLA8000 Drag Knob Assembly
53S	1385677	53S-CLA8000 Drag Knob Seal
56	1385678	56-CLA8000 Washer Carbon(3req.)
57	1385679	57-CLA8000 Keyed Washer(3req.)
95B	1385680	95B-CLA8000 Rotor Nut Locking Plate
98	1277190	98-SSV7500 Clutch/Sleeve Assembly
132	1277096	132-SSV5500 Line Roller Collar
132A	1277097	132A-SSV5500 Line Roller Washer
226	1488420	226-CLA8000 Rear Cover
226A	1385591	226A-CLA3000 Rear Cover Screw
231	1385681	231-CLA8000 O/S Gear
231A	1339566	231A-CLA5000 O/S Gear Bushing
231B	1277100	231B-SSV5500 Oscillation Gear Screw
231C	1389603	231C-CLA6000 O/S Gear Washer
231E	1385690	231E-CLA8000 Slow O/S Gear
233A	1339570	233A-CLA5000 Handle Cap