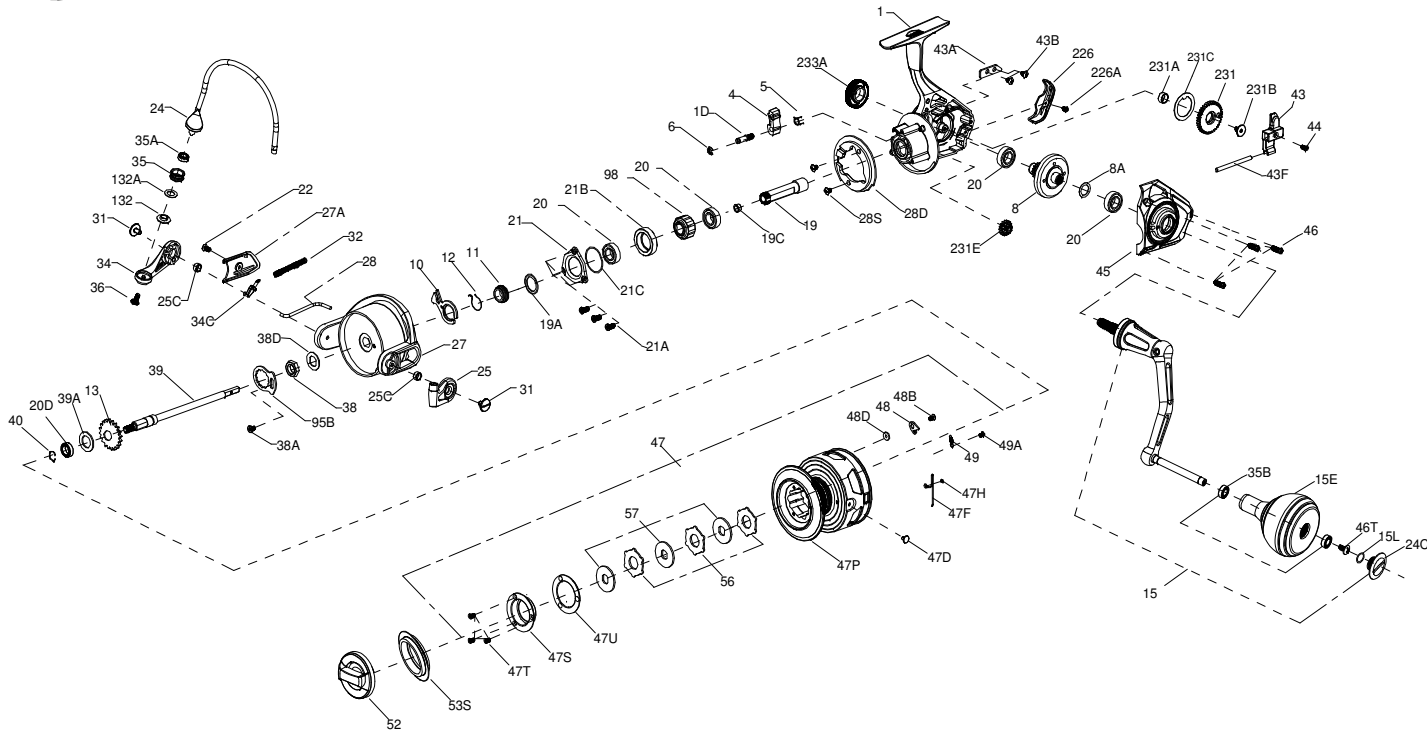




PARTS LIST FOR MODEL CLASH5000



KEY NO. PART NO. DESCRIPTION

27	1339502	27-CLA5000 Rotor
27A	1339506	27A-CLA5000 Rotor Cover
28	1339508	28-CLA5000 Bail Trip Lever
28D	1339509	28D-CLA5000 Rotor Brake
28S	1339512	28S-CLA5000 Rotor Brake Screw(2req.)
31	1339513	31-CLA5000 Bail Arm Screw (2req.)
32	1339514	32-CLA5000 Bail Spring
34	1339516	34-CLA5000 Bail Arm
34C	1277058	34C-SSV5500 Pivot Arm
35	1277059	35-SSV5500 Line Roller
35A	1377606	35A-BTLI8000LC Line Roller Ball Bearing
35B	1377606	35A-BTLI8000LC Line Roller Ball Bearing (2req.)
36	1277166	36-SSV7500 Line Roller Screw
36B	1417809	36B-CLA6000-Bail Arm Screw Washer
38	1339517	38-CLA5000 Rotor Nut
38A	1119121	20C-7000AF Screw
38D	1277064	38D-SSV5500 Rotor Washer
39	1339518	39-CLA5000 Main Shaft
39A	1339525	39A-CLA5000 Spool Adjust Washer
40	1339529	40-CLA5000 Main Shaft Bearing Lock Spring
43	1339535	43-CLA5000 O/S Slider
43A	1339536	43A-CLA5000 O/S Slider Guide
43B	1277070	43B-SSV5500 O/S Slider Guide Screw(2req.)
43F	1339537	43F-CLA5000 O/S Slider Guide Shaft
44	1277072	44-SSV5500 Main Shaft Screw
45	1339538	45-CLA5000 Body Cover
46	1277074	46-SSV5500 Body Cover Screw (3req.)
46T	1341500	3-SSV7500LC Screw
47	1339545	47-CLA5000 Spool Assembly
47D	1277078	47D-SSV5500 Line Clip
47F	1277080	47F-SSV5500 Line Clip Retainer
47H	1277054	28S-SSV5500 Rotor Brake Screw
47P	1339546	47P-CLA5000 Spool
47S	1339551	47S-CLA5000 Drag Cover
47T	1339552	47T-CLASH5000 Drag Cover Screw(3req.)
47U	1418960	47U-SLA3500 Drag Cover Seal
48	1385578	48-CLA3000 Spool Clicker
48B	1385581	48B-CLA3000 Spool Clicker Screw
48D	1385579	48D-CLA3000 Spool Clicker Spacer Ring
49	1259579	49-7000AF Spool Click Spring
49A	1341547	49A-SSV7500LC Spool Clicker Spring Screw
52	1339554	52-CLA5000 Drag Knob Assembly
53S	1339555	53S-CLA5000 Drag Knob Seal
56	1339557	56-CLA5000 Drag Friction Washer (3req.)
57	1339558	57-CLA5000 Keyed Drag Washer (3req.)
95B	1385647	95B-CLA2000 Rotor Nut Locking Plate
98	1277094	98-SSV5500 Clutch/Sleeve Assembly
132	1277096	132-SSV5500 Line Roller Collar
132A	1277097	132A-SSV5500 Line Roller Washer
226	1339561	226-CLA5000 Rear Cover
226A	1385591	226A-CLA3000 Rear Cover Screw
231	1339564	231-CLA5000 O/S Gear
231A	1339566	231A-CLA5000 O/S Gear Bushing
231B	1277100	231B-SSV5500 O/S Gear Screw
231C	1339567	231C-CLA5000 O/S Gear Washer
231E	1339568	231E-CLA5000 Slow O/S Gear
233A	1339570	233A-CLA5000 Handle Cap

KEY NO. PART NO. DESCRIPTION

1	1339472	1-CLA5000 Body Assembly
1D	1277140	1D-SSV7500 A/R Pawl Post
4	1339473	4-CLA5000 A/R Pawl
5	1339474	5-CLA5000 A/R Pawl Spring
6	1277144	6-SSV7500 Retainer Clip
8	1339475	8-CLA5000 Drive Gear
8A	1277037	8A-SSV5500 Drive Gear Shim Washer
10	1339476	10-CLA5000 A/R Pawl Holder
11	1339479	11-CLA5000 A/R Bushing
12	1339487	12-CLA5000 A/R Bushing Spring
13	1339489	13-CLA5000 Spool Click Gear
15	1339490	15-CLA5000 Handle Assembly
15E	1417807	15E-CLA5000 Handle Knob
15L	1417804	15L-CLA2000 Handle Knob Seal

KEY NO. PART NO. DESCRIPTION

19	1339491	19-CLA5000 Pinion Gear
19A	1393216	19A-CLA5000 Pinion Seal
19C	1339492	19C-CLA5000 Pinion Gear POM Bushing
20	1308090	20-CFT5000 Ball Bearing(4req.)
20D	1385530	20A-CLA3000 Sealed Ball Bearing
21	1277262	21-SSV9500 Pinion Bearing Retainer
21A	1277154	21A-SSV7500 Pinion Retainer Screw (3req.)
21B	1339493	21B-CLA5000 Pinion Ball Bearing Collar
21C	1339497	21C-CLA5000 Pinion Ball Bearing Collar Seal
22	1125962	231G-7000AF O/S Gear Pin Screw
24	1339499	24-CLA5000 Bail Assembly
24C	1417808	24C-CLA5000-Handle Knob Cap
25	1339500	25-CLA5000 Bail Holder
25C	1102065	25C-CLA5000 Bushing (2req.)