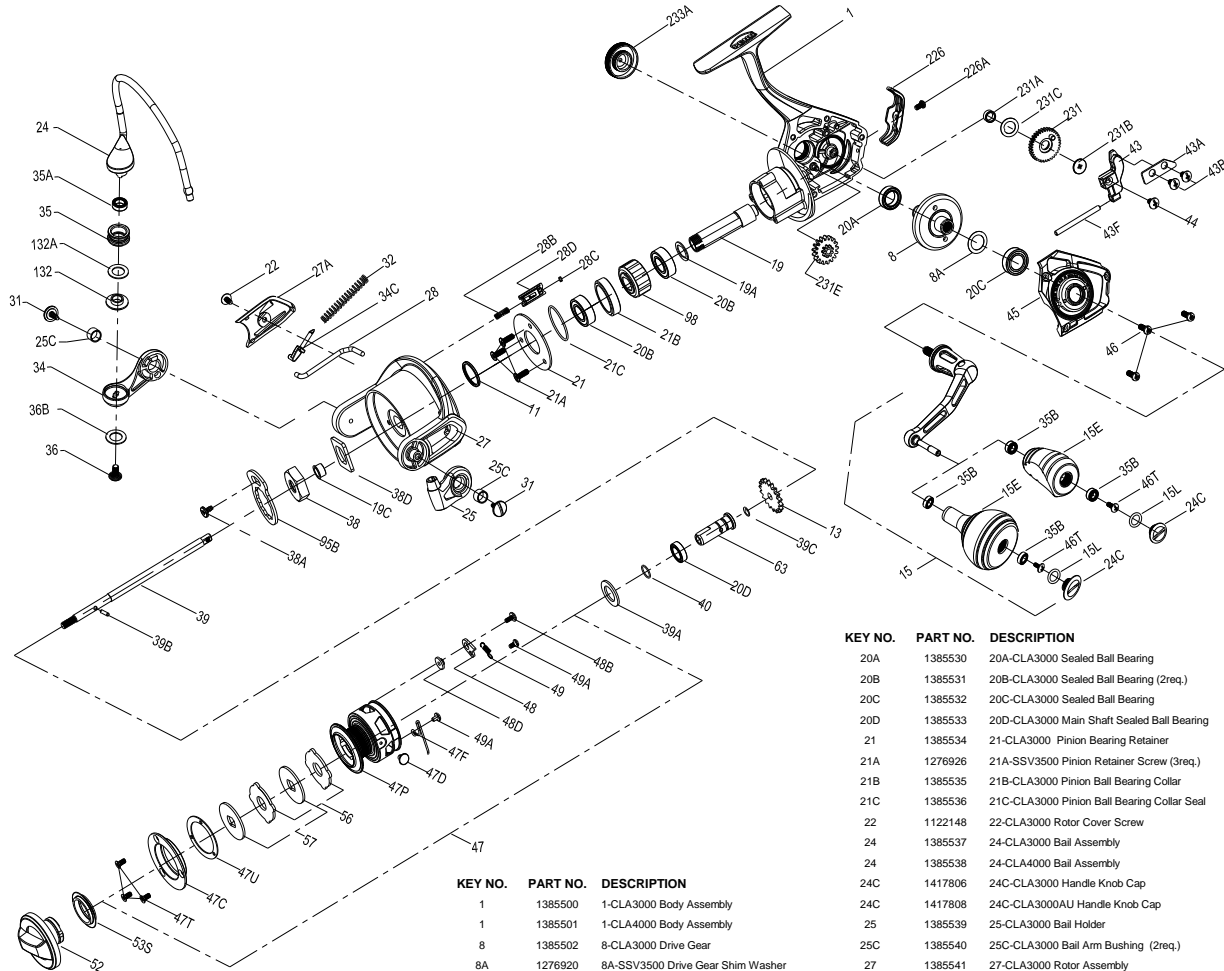




PARTS LIST FOR MODEL CLASH3000/CLASH3000AU/CLASH4000/CLASH4000AU



| KEY NO. | PART NO. | DESCRIPTION |
|---------|----------|-------------------------------------|
| 1 | 1385500 | 1-CLA3000 Body Assembly |
| 1 | 1385501 | 1-CLA4000 Body Assembly |
| 8 | 1385502 | 8-CLA3000 Drive Gear |
| 8A | 1276920 | 8A-SSV3500 Drive Gear Shim Washer |
| 11 | 1385504 | 11-CLA3000 Rotor Seal |
| 13 | 1385505 | 13-CLA3000 Spool Clicker Gear |
| 15 | 1385506 | 15-CLA3000 Handle Assembly |
| 15 | 1385507 | 15-CLA3000AU Handle Assembly |
| 15E | 1417805 | 15E-CLA3000 Handle Knob |
| 15E | 1417807 | 15E-CLA3000AU Handle Knob |
| 15L | 1417804 | 15L-CLA2000 Handle Knob Seal |
| 19 | 1385508 | 19-CLA3000 Pinion Gear |
| 19A | 1277424 | 19A-SSV3500 Pinion Gear Washer |
| 19C | 1385529 | 19C-CLA2000 Pinion Gear POM Bushing |

| KEY NO. | PART NO. | DESCRIPTION |
|---------|----------|---|
| 20A | 1385530 | 20A-CLA3000 Sealed Ball Bearing |
| 20B | 1385531 | 20B-CLA3000 Sealed Ball Bearing (2req.) |
| 20C | 1385532 | 20C-CLA3000 Sealed Ball Bearing |
| 20D | 1385533 | 20D-CLA3000 Main Shaft Sealed Ball Bearing |
| 21 | 1385534 | 21-CLA3000 Pinion Bearing Retainer |
| 21A | 1276926 | 21A-SSV3500 Pinion Retainer Screw (3req.) |
| 21B | 1385535 | 21B-CLA3000 Pinion Ball Bearing Collar |
| 21C | 1385536 | 21C-CLA3000 Pinion Ball Bearing Collar Seal |
| 22 | 1122148 | 22-CLA3000 Rotor Cover Screw |
| 24 | 1385537 | 24-CLA3000 Bail Assembly |
| 24 | 1385538 | 24-CLA4000 Bail Assembly |
| 24C | 1417806 | 24C-CLA3000 Handle Knob Cap |
| 24C | 1417808 | 24C-CLA3000AU Handle Knob Cap |
| 25 | 1385539 | 25-CLA3000 Bail Holder |
| 25C | 1385540 | 25C-CLA3000 Bail Arm Bushing (2req.) |
| 27 | 1385541 | 27-CLA3000 Rotor Assembly |
| 27 | 1385542 | 27-CLA4000 Rotor Assembly |
| 27A | 1389427 | 27A-CLA3000 Rotor Cover |
| 27A | 1389434 | 27A-CLA4000 Rotor Cover |
| 28 | 1385543 | 28-CLA3000 Bail Trip Lever |
| 28 | 1385544 | 28-CLA4000 Bail Trip Lever |
| 28B | 1385546 | 28B-CLA3000 Rotor Brake Spring |
| 28C | 1385547 | 28C-CLA3000 Rotor Brake Seal |
| 28D | 1385545 | 28D-CLA3000 Rotor Brake |
| 31 | 1385548 | 31-CLA3000 Bail Arm Screw (2req.) |
| 32 | 1385549 | 32-CLA3000 Bail Spring |

| KEY NO. | PART NO. | DESCRIPTION |
|---------|----------|---|
| 34 | 1385550 | 34-CLA3000 Bail Arm |
| 34C | 1385551 | 34C-CLA3000 Pivot Arm |
| 35 | 1276939 | 35-SSV3500 Line Roller |
| 35A | 1385552 | 35A-CLA3000 Line Roller Sealed Ball Bearing |
| 35B | 1418393 | 35B-CLA3000 Ball Bearing(2req.) |
| 35B | 1377606 | 35B-CLA3000AU Ball Bearing(2req.) |
| 36 | 1277061 | 36-SSV5500 Line Roller Screw |
| 36B | 1417809 | 36B-CLA6000-Ball Arm Screw Washer |
| 38 | 1385623 | 38-CLA2000 Rotor Nut |
| 38A | 1385624 | 38A-CLA2000 Rotor Nut Lock Plate Screw |
| 38D | 1385555 | 38D-CLA3000 Rotor Washer |
| 39 | 1385556 | 39-CLA3000 Main Shaft |
| 39 | 1385557 | 39-CLA4000 Main Shaft |
| 39A | 1385558 | 39A-CLA3000 Spool Adjust Washer |
| 39B | 1385559 | 39B-CLA3000 Main Shaft Pin |
| 39C | 1385560 | 39C-CLA3000 Main Shaft Seal |
| 40 | 1385598 | 40-CLA3000 Main Shaft Bushing O-Ring |
| 43 | 1385561 | 43-CLA3000 O/S Slider |
| 43A | 1385562 | 43A-CLA3000 O/S Slider Guide |
| 43B | 1277070 | 43B-SSV5500 O/S Slider Guide Screw(2req.) |
| 43F | 1385563 | 43F-CLA3000 Guide Shaft |
| 44 | 1385564 | 44-CLA3000 Main Shaft Screw |
| 45 | 1385565 | 45-CLA3000 Body Cover |
| 45 | 1385566 | 45-CLA4000 Body Cover |
| 46 | 1385567 | 46-CLA3000 Body Cover Screw (3req.) |
| 46T | 1341500 | 3-SSV7500LC Screw |
| 47 | 1385569 | 47-CLA3000 Spool Assembly |
| 47 | 1385570 | 47-CLA4000 Spool Assembly |
| 47C | 1385571 | 47C-CLA3000 Drag Cover |
| 47D | 1276953 | 47D-SSV3500 Line Clip |
| 47F | 1385572 | 47F-CLA3000 Line Clip Retainer |
| 47P | 1385573 | 47P-CLA3000 Spool |
| 47P | 1385574 | 47P-CLA4000 Spool |
| 47T | 1341544 | 47T-SSV7500LC Rear Cover Screw(3req.) |
| 47U | 1418960 | 47U-CLA3000 Drag Cover Seal |
| 48 | 1385578 | 48-CLA3000 Spool Click Plate |
| 48B | 1385581 | 48B-CLA3000 Spool Clicker Spring Screw |
| 48D | 1385579 | 48D-CLA3000 Spool Clicker Spacer Ring |
| 49 | 1385580 | 49-CLA3000 Spool Click Spring |
| 49A | 1341547 | 49A-SSV7500LC Spool Clicker Spring Screw(2req.) |
| 52 | 1385582 | 52-CLA3000 Drag Knob Assembly |
| 53S | 1385583 | 53S-CLA3000 Drag Knob Seal |
| 56 | 1385584 | 56-CLA3000 Drag Friction Washer (2req.) |
| 57 | 1385585 | 57-CLA3000 Keyed Drag Washer (2req.) |
| 57 | 1385586 | 57-CLA4000 Keyed Drag Washer (2req.) |
| 63 | 1385587 | 63-CLA3000 Main Shaft Bushing |
| 63 | 1450979 | 63-CLA4000 Main Shaft Bushing |
| 95B | 1385647 | 95B-CLA2000 Rotor Nut Locking Plate |
| 98 | 1276966 | 98-SSV3500 Clutch/Sleeve Assembly |
| 132 | 1277096 | 132-SSV5500 Line Roller Collar |
| 132A | 1277097 | 132A-SSV5500 Line Roller Washer |
| 226 | 1385590 | 226-CLA3000 Rear Cover |
| 226A | 1385591 | 226A-CLA3000 Rear Cover Screw |
| 231 | 1385592 | 231-CLA3000 O/S Gear |
| 231 | 1385593 | 231-CLA4000 O/S Gear |
| 231A | 1385595 | 231A-CLA3000 O/S Gear Bushing |
| 231B | 1385596 | 231B-CLA3000 O/S Gear Screw |
| 231C | 1385594 | 231C-CLA3000 O/S Gear Washer |
| 231E | 1385597 | 231E-CLA4000 Slow O/S Gear |
| 233A | 1385598 | 233A-CLA3000 Handle Cap |