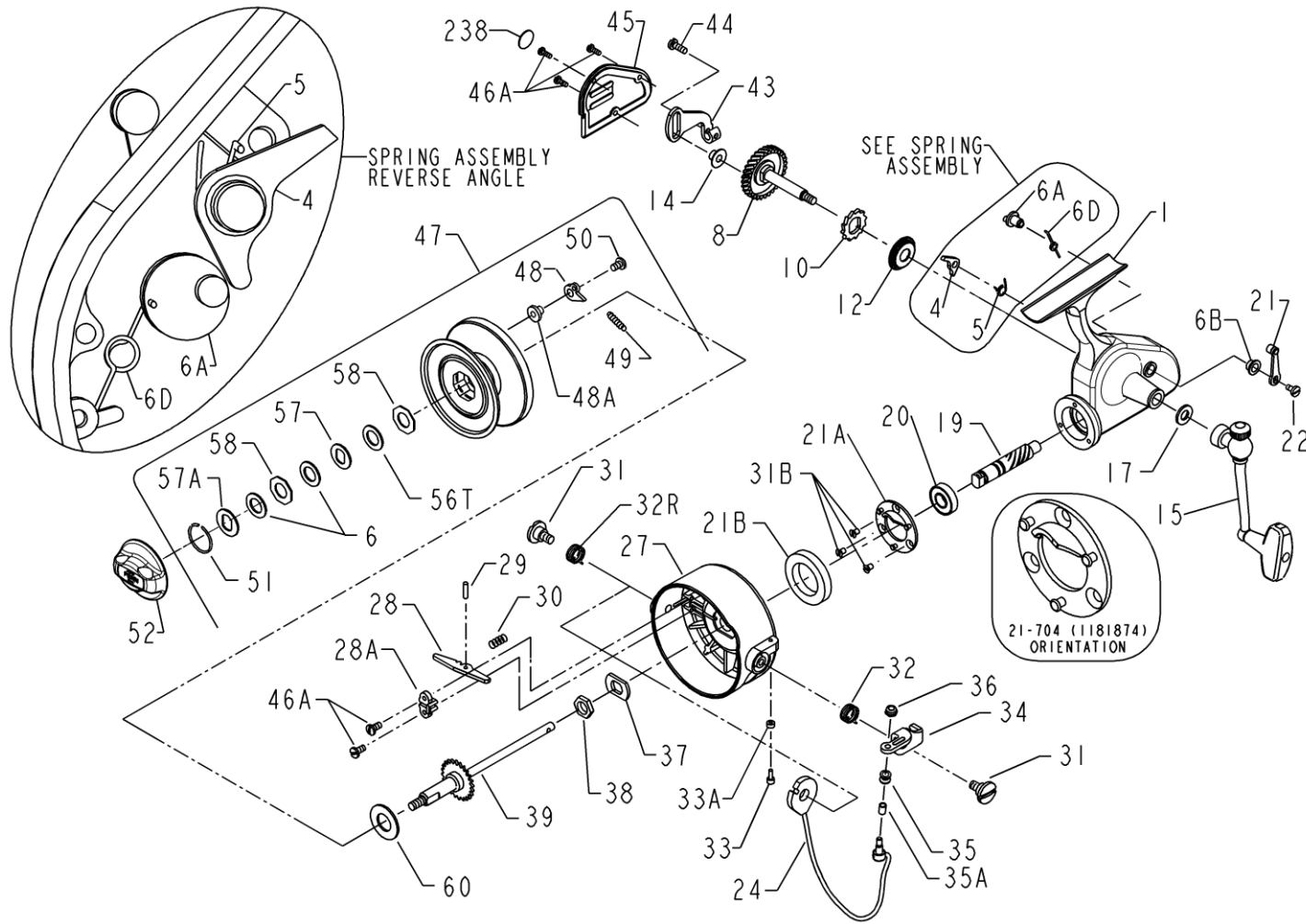


PENN[®] PARTS LIST FOR MODEL 704Z

REEL ASSEMBLY NO. 000F704Z (1291090)



KEY NO.	PENN STYLE NO.	ORDER PART NO.	DESCRIPTION
8	008 704	1181097	Main Gear
10	010 704	1181208	Ratchet
12	012 704	1181272	Main Gear Thrust Washer
14	014 710	1181409	Crosswind Roller
15	015 704	1181492	Handle (Complete)
17	017 710	1181601	Handle Washer
19	019 704	1181708	Pinion Gear
20	020 704	1181790	Pinion Bearing
21	021E704	1320714	Eccentric Lever With Sleeve
21A	021 704	1181874	Bearing Cover (Inseparable Asm)
21B	021B704	1181903	Rotor Brake
22	022 109	1181912	Eccentric Screw
24	024 704	1182059	Bail Wire Asm
27	027 704	1182273	Rotor Cup
28	028 704	1182406	Bail Release Arm
28A	028A704	1182432	Bail Release Saddle
29	029 704	1182462	Bail Release Pin
30	030 704	1182637	Bail Release Spring
31	031 704	1182675	Bail Arm Screw (2 req.)
31B	031 019	1182654	Bearing Cover Screw (3 req.)
32	032 704	1182735	Bail Spring
32R	032R704	1182750	Secondary Bail Spring
33	033 704	1182764	Bail Bumper
33A	033A704	1182766	Bumper Cup
34	034 704	1182827	Bail Arm
35	035 704	1182937	Line Roller
35A	035A704	1182962	Roller Sleeve
36	036 700	1183014	Bail Lock Nut
37	037 704	1183083	Rotor Cup Washer
38	038 704	1183156	Rotor Cup Nut
39	039 704	1183230	Spool Shaft
43	043 704	1183399	Crosswind Arm
44	044 704	1183458	Crosswind Screw
45	045 704	1183521	Housing Plate (With Emblem)
46A	046A704	1183586	Housing Plate Screw (3 req.)
46A	046A704	1183586	Saddle Screw (2 req.)
47	047 704	1183658	Spool Asm (Complete)
48	048 450	1183709	Click Tongue
48A	048A750	1183722	Click Tongue Washer
49	049 710	1183741	Click Spring
50	048B750M	1186969	Click Screw
51	051 704	1183795	Retaining Spring
52	052 750	1183837	Drag Knob (Complete Asm)
56T	056T704	1183918	Drag Washer (Teflon®)
57	057 704	1183937	Metal Keyed Washer
57A	057A750	1183942	Metal Keyed Washer
58	058 704	1183960	Metal Washer (Octagon) (2 req.)
60	060 710	1184004	Rear Drag Washer (Teflon®)
238	238 704	1185177	Housing Plate Emblem

KEY NO.	PENN STYLE NO.	ORDER PART NO.	DESCRIPTION
1	001 704	1180540	Housing w/Bushing
4	004 704	1180783	Dog
5	005 704	1180877	Dog Spring
6	006 060	1180906	Drag Washer-HT100 (2 req.)
6A	006A704	1180954	Eccentric
6B	006B700Z	1180965	Eccentric Liner
6D	006D710	1180977	Eccentric Spring