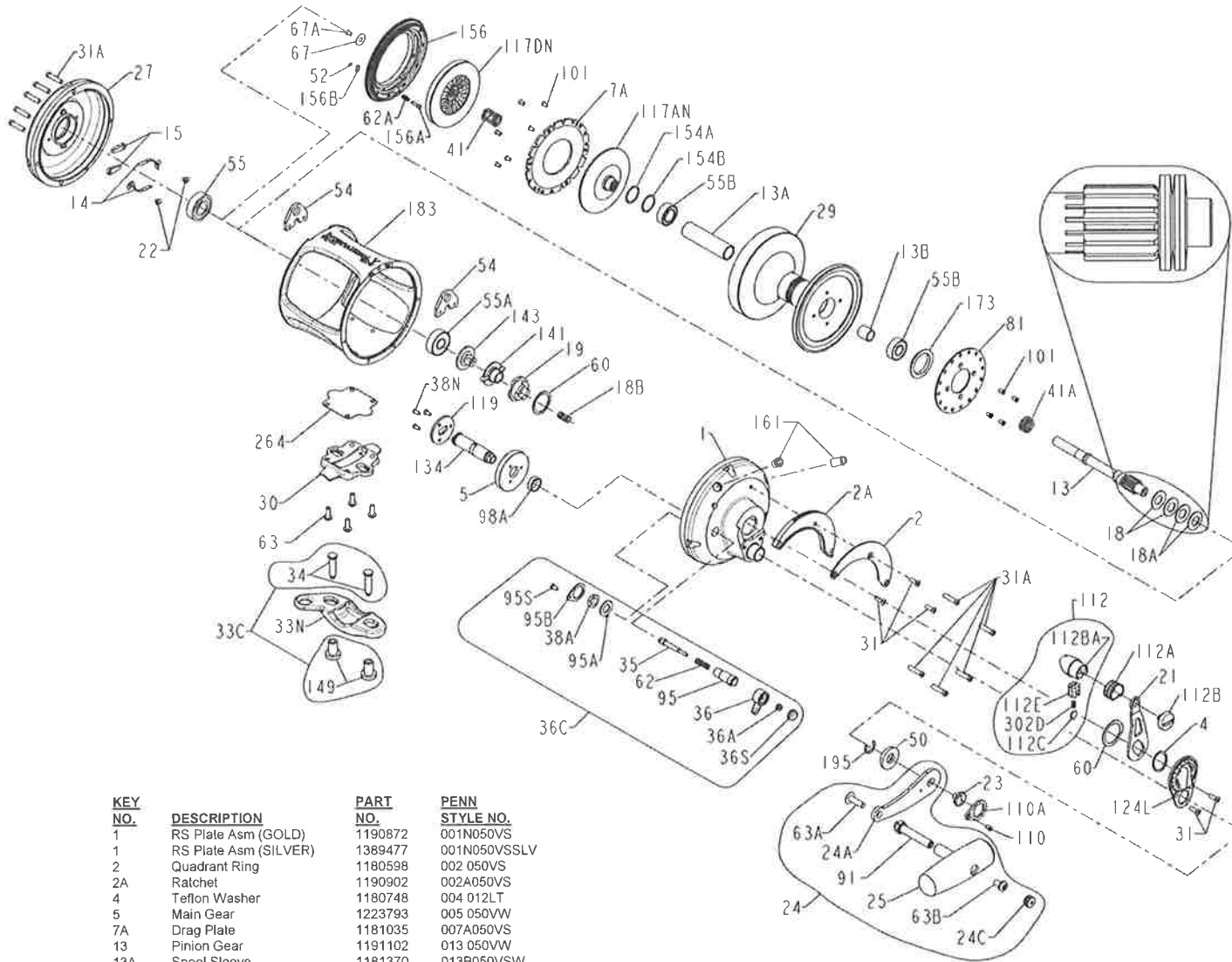




PARTS LIST FOR MODELS 50VW, 1151047 (GOLD) & 50VWS, 1385483 (SILVER)



KEY NO.	DESCRIPTION	PART NO.	PENN STYLE NO.
1	RS Plate Asm (GOLD)	1190872	001N050VS
1	RS Plate Asm (SILVER)	1389477	001N050VSSLV
2	Quadrant Ring	1180598	002 050VS
2A	Ratchet	1190902	002A050VS
4	Teflon Washer	1180748	004 012LT
5	Main Gear	1223793	005 050VW
7A	Drag Plate	1181035	007A050VS
13	Pinion Gear	1191102	013 050VW
13A	Spool Sleeve	1181370	013B050VSW
13B	Pinion Gear Sleeve	1181371	013B070
14	Dog Spring (2 req.)	1181391	014 050
15	Dog (2 req.)	1181425	015 050
18	Spring (Heavy) (2req.)	1181613	018 050TW
18A	Spring (Light) (2req.)	1181614	018 050W
18B	Drag Spring	1181622	018 349
19	Drag Cam	1181646	019 050VS
21	Drag Lever	1181834	021 050VS
22	Dog Spring Screw (2 req.)	1181912	022 109

KEY NO.	DESCRIPTION	PART NO.	PENN STYLE NO.
23	Handle Screw Asm	1181945	023 114
24	Handle Asm	1181975	024 050T
24A	Handle Blank	1181976	024 050T-1
24C	Handle Knob Cap	1191334	024C050M
25	Handle Knob Asm	1206009	025S050M
27	Left Side Plate Asm (GOLD)	1191471	027N050VS
27	Left Side Plate Asm (SILVER)	1390196	027N050VSSLV
29	Spool Assembly (GOLD)	1182494	029N050VSW
29	Spool Assembly (SILVER)	1389494	029N050VSWSLV

KEY NO.	DESCRIPTION	PART NO.	PENN STYLE NO.
30	Stand	1191552	030 050VS
31	Screw (5 req.)	1182700	031T070
31A	Screw (10 req.)	1191564	031 080VS
33C	Rod Clamp Kit	1182770	033C070VS
33N	Rod Clamp	1191619	033N070
34	Clamp Screw (2 req.)	1182792	034 070VS
35	Click Tongue	1191667	035 070VS
36	Click Lever	1183047	036N050
36A	Click Lever Nut	1183014	036 700
36C	Click Asm	1183039	036C050VSW
36S	Click Button Cap	1183051	036S080ST
38A	Click Bushing Nut	1183157	038 710
38N	Plate Screw (3 req.)	1183171	038N007
41	Spring	1183325	041 050
41A	Drag Spring	1183328	041 070
50	Gear Stud Shield	1191965	050 030VW
52	Retaining Ring	1183840	052 910
54	Harness Lug (2 req.)	1183854	054 050T
55	Left Side Ball Bearing	1183878	055 080
55A	Right Side Ball Bearing	1183876	055 050
55B	Spool Ball Bearing (2 req.)	1183979	055 080ST
60	Drag Washer (2 req.)	1183983	060 050
62	Click Spring	1184022	062 050
62A	Drag Cover Lock Spring	1184029	062 545
63	Stand Screw (4 req.)	1184045	063 030T
63A	Handle Rivet Screw	1184056	063A050
63B	Handle Knob Screw	1184046	063 050
67	Pinion Retaining Washer	1184106	067 070
67A	Drag Washer (2 req.)	1184111	067A070
81	Click Ratchet Plate	1184204	081 050
91	Handle Rivet	1184304	091N050
95	Click Tongue Bushing	1184307	095 070
95A	Click Bushing Washer	1184311	095A050
95B	Click Retaining Plate	1184312	095B070
95S	Screw	1181953	023 750
98A	Gear Stud Spacer	1192707	098A050VW
101	Screw (10 req.)	1184403	101 030
110	Locking Ring Screw	1184436	110 050
110A	Handle Screw Locking Ring	1184441	110A050
112	Drag Knob Asm (GOLD)	1184456	112 030VS
112	Drag Knob Asm (SILVER)	1390201	112 030VSSLV
112A	Drag Knob Sleeve	1184460	112A030VS
112B	Drag Knob Screw (GOLD)	1184464	112B070
112B	Drag Knob Screw (SILVER)	1389498	112B070SLV
112BA	Drag Lever Knob (GOLD)	1192711	112B030VS
112BA	Drag Lever Knob (SILVER)	1389497	112B030VSSLV
112C	Drag Click Plate	1192712	112C030VS
112E	Drag Click Plate Housing	1192713	112E030VS
117AN	Inner Drive Plate Asm	1184496	117AN070
117DN	Outer Drive Plate Asm	1184503	117DN070VS
119	Main Gear Coupling Plate	1192268	119 050
124L	Bridge Cover Asm	1184549	124L050VS
134	Gear Stud	1192310	134 050VW
141	Cam Follower	1184655	141 050VS
143	Preset Screw	1184673	143 050VS
149	Rod Clamp Nut (2 req.)	1184703	149 070
154A	Shim- Spool (as required)	1184719	154 080
154B	Shim- Spool (as required)	1253919	154 080-5
156	Drag Cover Asm	1184739	156N050VS
156A	Drag Cover Lock Pin	1184752	156A030VS
156B	Drag Cover Lock Plate	1184756	156B030VS
161	Locating Pin Asm (2 req.)	1192369	161C030VSW
173	Spool Bushing	1184838	173 050VS
183	Frame Asm (GOLD)	1192430	183N050VW
183	Frame Asm (SILVER)	1390206	183N050VWSSLV
195	Retaining Ring	1184955	195 040
264	Stand Gasket	1192542	264 030VS
302D	Drag Click Plate Spring	1185255	302D525MAG