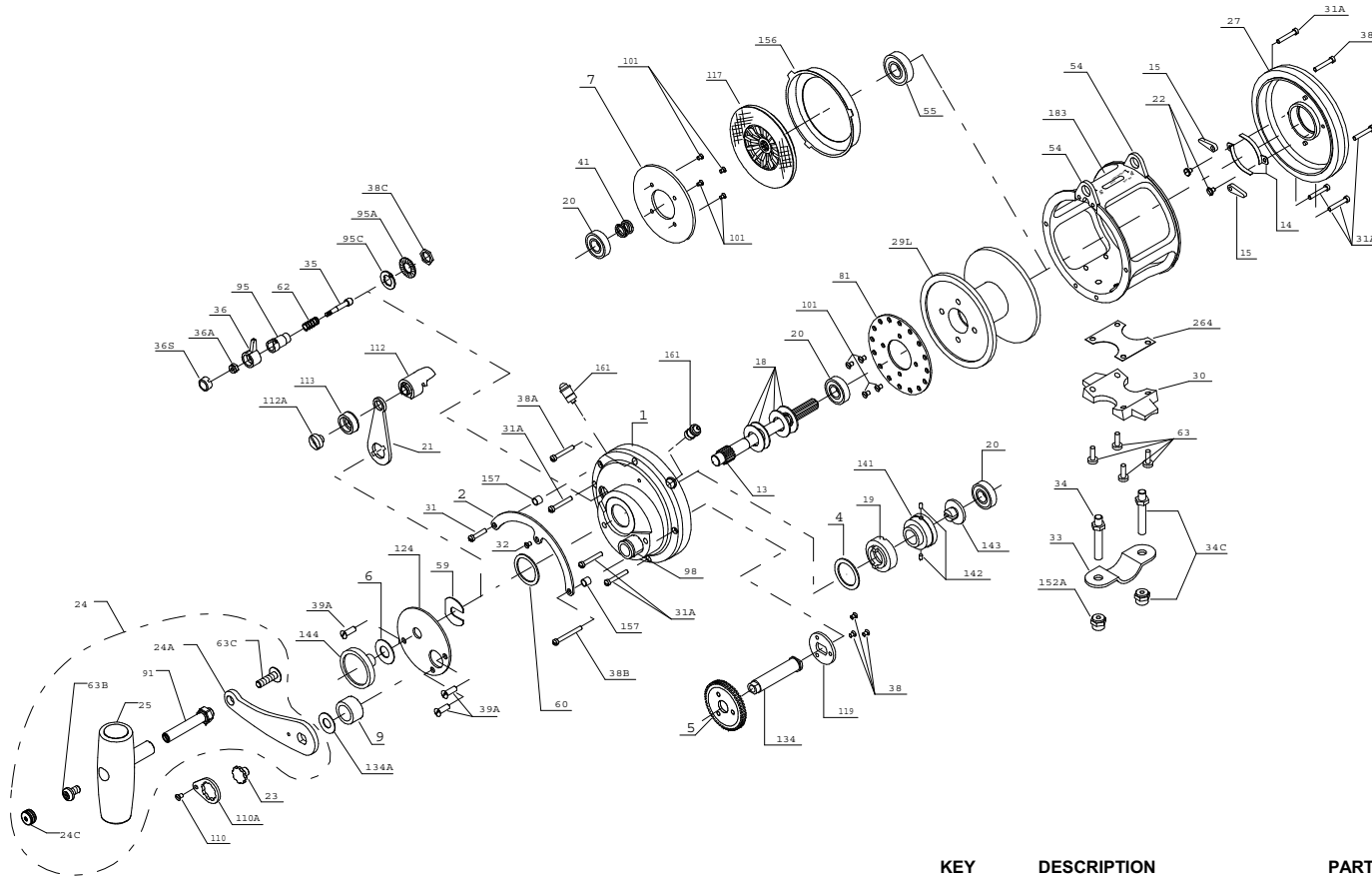




# PARTS LIST FOR MODEL 20T



KEY NO.	DESCRIPTION	PART NO.	PART NO.
24	Handle Complete		024 030TW
24A	Handle Blank Only		024 030TW-1
24C	Handle Knob Cap		024C050
25	Handle Knob		025 050
27	L.S. Plate Assembly		027 020T
29L	Spool		029L 020
30	Stand		030 020T
31	Short Quadrant Screw		031T020
31A	Frame Screw (7 req.)		031T080
32	Center Quadrant Screw		032T020
33	Rod Clamp		033 049
34	Rod Clamp Screw (2 req.)		034 030T
34C	Rod Clamp Screw w/Nut		034C030T
35	Click Tongue		035 050N
36	Click Button		036N050
36A	Click Button Nut		036 700
36S	Click Button Cap		036S080ST
38	Coupling Plate Screw (3 req.)		038N007
38A	Frame Screw (2 req.)		038T050
38B	Long Quadrant Screw		038T080
38C	Click Bushing Nut		038 710
39A	Bridge Cover Screw (3 req.)		039A 080S
41	L.S. Bearing Spring		041 050
*	Cam Housing Screw (2 req.)		046A704
54	Harness Lug (2 req.)		054 030T
55	Left-Side Bearing		055 080
59	Slotted Washer		059 050
60	Backing Washer		060 050
62	Click Spring		062 050
63	Stand Screw (4 req.)		063 030T
63B	Long Screw		063 050
63C	Screw		063A050
81	Ratchet		081 050
91	Handle Rivet		091N050
95	Click Tongue Bushing		095 050
95A	Click Bushing Washer		095A020
95C	Click Bushing Washer		095A050
98	Bridge Bushing		098 030TN
101	Drive Plate Screw (8 req.)		101 030
110	Handle Lock Screw		110 050
110A	Handle Locking Plate		110A050
112	Eccentric Lever Knob		112 050
112A	Eccentric Lever Screw		112A050
113	Eccentric Lever Cap		113 050
117	Drive Plate w/Drwg Washer		117D030
119	Coupling Plate		119 050
124	Bridge Cover		124 030
*	Cam Housing		125 030
134	Gear Stud		134 050
134A	Gear Stud Washer		134A050
141	Cam Follower		141 030
142	Follower Pin (2 req.)		142 050
143	Adjusting Screw		143 030
144	Preset Knob		144 050
152A	Rod Clamp Acorn Nut (2 req.)		152A030T
156	Drag Cover		156 030
157	Quadrant Spacer Bushing (2 req.)		157 050
161	Locating Pin Assembly (2 req.)		161C070
183	Tube Frame		183 020T
264	Stand Gasket		264 030T

KEY NO.	DESCRIPTION	PART NO.
1	R.S. Plate Assembly	001 020TN
2	Quadrant Ring	002 030
4	Cam Thrust Washer	004 030
5	Main Gear High Speed	005 050
6	Preset Spacer Washer	006 155
7	Metal Drag Washer	007 030
9	Spacing Sleeve	009 030
13	Pinion Gear	013 020
14	Dog Spring (2 req.)	014 050
15	Dog (2 req.)	015 050
18	Disc Clutch Spring (4 req.)	018 030
19	Eccentric Cam	019 020
20	Ball Bearing (3 req.)	020 704
21	Eccentric Lever	021 030
22	Dog Spring Screw (2 req.)	022 109
23	Handle Screw	023 114