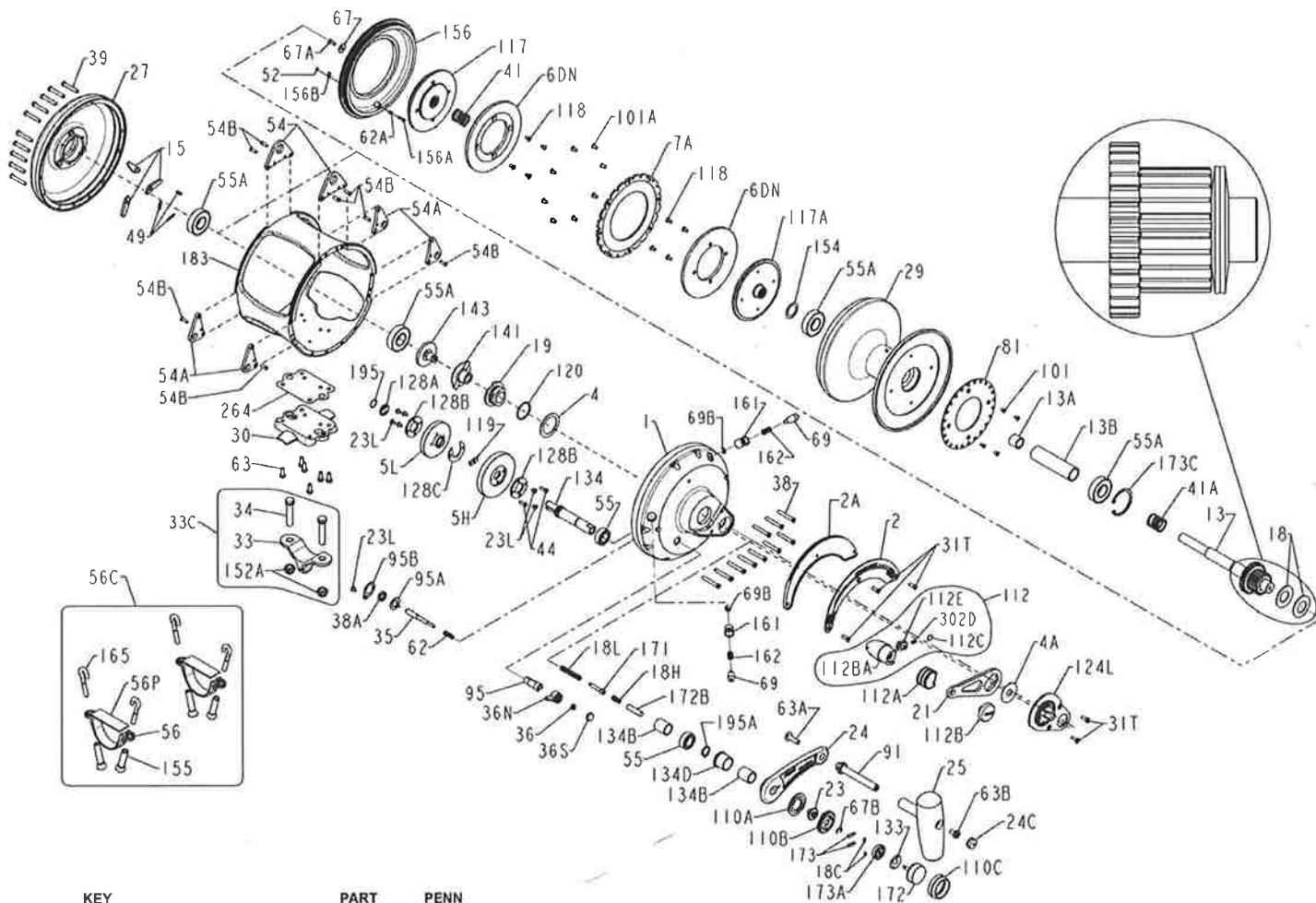




MODELS 130VSX, 1151040 (GOLD) & 130VSXS, 1385493 (SILVER)



KEY NO.	DESCRIPTION	PART NO.	PENN STYLE NO.
1	Right Side Plate (GOLD)	1190816	001 130VS
1	Right Side Plate (SILVER)	1389475	001 130VSSLV
2	Quadrant Ring	1190888	002 130VS
2A	Drag Lever Ratchet	1190905	002A130VS
4	Cam Thrust Washer	1190934	004 130VS
4A	Lever Thrust Washer	1180792	004A070
5H	High Speed Main Gear	1190958	005 130VSHS
5L	Low Speed Main Gear	1192582	005 130VSLS
6DN	Drag Washer Asm. (2 req)	1180980	006DN130
7A	Drag Plate	1191010	007A130VS
13	Pinion Gear Assembly	1191108	013 130VS
13A	Pinion Sleeve (short)	1191127	013B130
13B	Spool Sleeve (long)	1191128	013B130VS
15	Dog (3 req.)	1181442	015 130
18	Clutch Disc Spring (2 req)	1181620	018 130
18C	Shift Catch Spring (2 req)	1181632	018C015KG
18H	Shift Spring (Heavy)	1181634	018H030VS
18L	Shift Spring (Light)	1181637	018L030VS

KEY NO.	DESCRIPTION	PART NO.	PENN STYLE NO.
19	Drag Cam	1191224	019 130VS
21	Drag Lever	1192628	021 130VS
23	Handle Screw	1191279	023 130VS
23L	Screw (7 req)	1191283	023L750
24	Handle Arm	1191289	024 130VS
24C	Handle Knob Cap	1191336	024C080ST
25	Handle Knob	1224726	025 080STM
27	LS Plate Asm (GOLD)	1191388	027 130VS
27	LS Plate Asm (SILVER)	1390200	027 130VSSLV
29	Spool Assembly (GOLD)	1191537	029L130VS
29	Spool Assembly (SILVER)	1389493	029L130VSSLV
30	Stand	1191557	030 130VS
31T	Screw (5 req)	1182700	031T070
33	Rod Clamp	1182758	033 130ST
33C	Rod Clamp Kit	1191610	033C130VSX
34	Rod Clamp Screw (2 req)	1182805	034 130
35	Click Tongue	1191669	035 130VS
36	Click Button Nut	1183014	036 700
36N	Click Button	1183047	036N050
36S	Click Button Cap	1183051	036S080ST

KEY NO.	DESCRIPTION	PART NO.	PENN STYLE NO.
38	R. S. Plate Screw (10 req)	1191726	038 130VS
38A	Click Retainer Nut	1183157	038 710
39	L.S. Plate Screw (10 req)	1191742	039 130VS
41	L.S. Bearing Spring	1191789	041 130VS
41A	R.S. Bearing Spring	1191792	041A130VS
44	Drive Plate Screw (2 req)	1183459	044 710
49	Dog Spring (3 req)	1183741	049 710
52	Retaining Ring	1183840	052 910
54	Harness Lug (2 req)	1192019	054 130VS
54A	Rod Brace Lug (4 req)	1192024	054A130VS
54B	Lug Screw (8 req)	1192025	054B080VS
55	Ball Bearing (2 req)	1183879	055 080ST
55A	Ball Bearing (4 req)	1183884	055 130
56	Rod Brace (2 req)	1183903	056 130
56C	Rod Brace Kit	1192040	056C130VSX
56P	Rod Brace Pad (2 req)	1183913	056P117
62	Click Spring	1184022	062 050
62A	Drag Cover Lock Spring	1184029	062 545
63	Stand Screw (6 req)	1184045	063 030T
63A	Handle Shaft Screw	1184056	063A050
63B	Handle Knob Screw	1192077	063 080VS
67	Pinion Retaining Washer	1184106	067 070
67A	Pinion Retaining Screw	1184111	067A070
67B	Retaining Ring	1192095	067 130VS
69	Drag Locating Pin (2 req)	1184117	069 130
69B	Retaining Ring (2 req)	1184128	069B130
81	Click Ratchet Plate	1184208	081 130
91	Handle Shaft	1192179	091 080VS
95	Click Bushing	1184307	095 070
95A	Click Bushing Lock Washer	1184311	095A050
95B	Click Locking Plate	1184312	095B070
101	Click Ratchet Screw (4 req)	1184403	101 030
101A	Drag Washer Screw (8 req)	1184406	101 130S
110A	Handle Screw Locking Ring	1192238	110A130VS
110B	Shifter Base Assembly	1192240	110B130VS
110C	Shift Button Retainer	1192242	110C130VS
112	Drag Knob Asm (GOLD)	1192245	112 130VS
112	Drag Knob Asm (SILVER)	1390202	112 130VSSLV
112A	Drag Knob Sleeve	1192247	112A130VS
112B	Drag Knob Screw (GOLD)	1192249	112B130VS
112B	Drag Knob Screw (SILVER)	1389500	112B130VSSLV
112BA	Drag Lever Knob (GOLD)	1223802	112 130VS-1
112BA	Drag Lever Knob (SILVER)	1389496	112 130VSSLV-1
112C	Click Plate	1192712	112C030VS
112E	Click Plate Housing	1192713	112E030VS
117	Outer Drive Plate	1184481	117 130
117A	Inner Drive Plate	1184494	117A130
118	Drive Plate Screw (8 req)	1184513	118 080S
119	Shift Plate	1192269	119 130VS
120	O-Ring	1192719	120 130VS
124L	Bridge Cover Assembly	1192278	124L130VS
128A	Drive Plate	1192287	128A130VS
128B	Drive Plate (2 req)	1192289	128B130VS
128C	Main Gear Connecting Plate	1192292	128C130VS
133	Retaining Clip	1184602	133 030VS
134	Gear Stud	1192314	134 130VS
134B	Shifter Sleeve (2 req)	1192322	134B130VS
134D	Shifter Bushing	1192324	134D130VS
141	Cam Follower	1192329	141 130VS
143	Adjusting Screw	1192725	143 130VS
152A	Rod Clamp Nut (2 req)	1184714	152A080T
154	Spool Shim (as required)	1184722	154 130
155	Turnbuckle (2 req)	1184726	155 130
156	Drag Cover	1192354	156 130VS
156A	Drag Cover Lock Pin	1184752	156A030VS
156B	Drag Cover Lock Plate	1184756	156B030VS
161	Locating Pin Bushing (2 req)	1192368	161 130VS
162	Locating Pin Spring (2 req)	1184796	162 130
165	RH Screw Hook (4 req)	1184798	165 116
171	Shifter Plunger	1184811	171 015KG
172	Shift Button, Metal	1192377	172 130VS
172B	Shifter Spacer	1192362	172B130VS
173	Shifter Catch (2 req)	1184835	173 030VS
173A	Shifter Catch Holder	1192390	173A130VS
173C	Retaining Ring	1192388	173 130VS
183	Frame (GOLD)	1192410	183 130VSX
183	Frame (SILVER)	1389509	183 130VSXSLV
195	Spiral Retaining Ring	1184954	195 024KG
195A	Retaining Ring	1184956	195 600
264	Stand Gasket	1185229	264 130ST
302D	Spring	1185255	302D525MAG