

Tribeca Light Kit

Owner's Guide and Installation Manual
Manual De Propietario



English

Español

Form# 43541-01
20090526
©2009 Hunter Fan Co.

SINCE 1886
Hunter®

Welcome

Your new Hunter® light kit is an addition to your home or office that will provide comfort and performance for many years. This installation and operation manual gives you complete instructions for installing and operating your light kit.

We are proud of our work. We appreciate the opportunity to supply you with the best products available anywhere in the world.

Before installing your light kit, for your records and warranty assistance, record information from the carton and Hunter nameplate label.

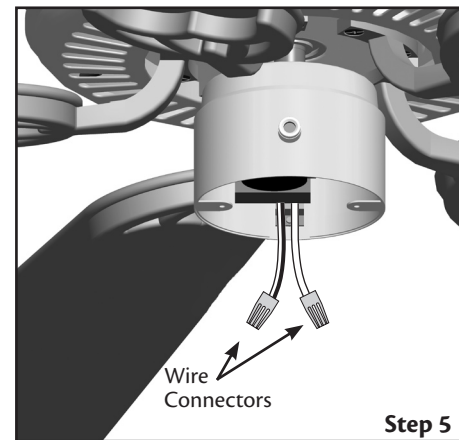
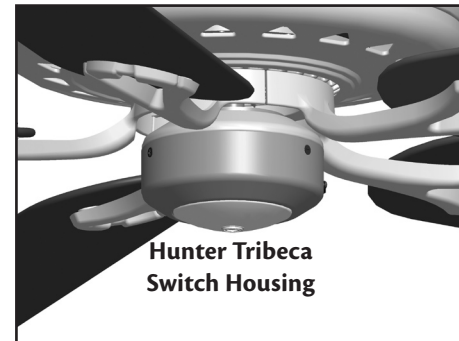
Cautions and Warnings

- **READ THIS ENTIRE MANUAL CAREFULLY BEFORE BEGINNING INSTALLATION. SAVE THESE INSTRUCTIONS.**
- Use only Hunter replacement parts.
- To reduce the risk of personal injury, install this light fixture only on Hunter® fan types A through Z. **Note:** The fan type can be found on the ceiling fan package or on the nameplate label located on top of the motor housing of the ceiling fan.
- To avoid possible electrical shock, before installing light fixtures, disconnect the power by turning off the circuit breakers both to the outlet box and to its associated wall switch location. If you cannot lock the circuit breakers in the off position, securely fasten a prominent warning device, such as a tag, to the service panel.
- Connect house wiring to the fan before attaching the light fixture to the fan.
- All wiring must be in accordance with national and local electrical codes and ANSI/NFPA 70. If you are unfamiliar with wiring, use a qualified electrician.

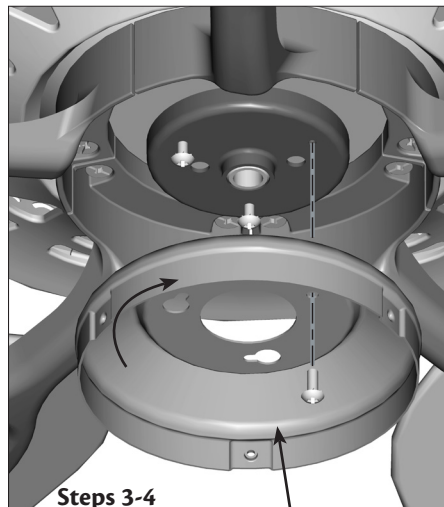
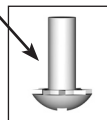
Installing the Light Kit on the Hunter Tribeca Ceiling Fan

Your *Hunter*® light kit can be installed onto Hunter Tribeca Models 28120, 28121, and 28122.

1. Disconnect power by turning off the circuit breakers both to the outlet box and to its associated wall switch location.
2. Unscrew the three screws from the upper switch housing. Remove the lower switch housing.
3. Locate the three attachment screws attaching the upper switch housing to the fan. Remove the screws and the upper switch housing from the bottom of the fan.
NOTE: Save the switch housing assembly and screws should you choose to remove the light fixture in the future.
4. Partially install two of the previously removed assembly screws into the switch housing mounting plate.



Attachment
Screw



Upper
Switch
Housing

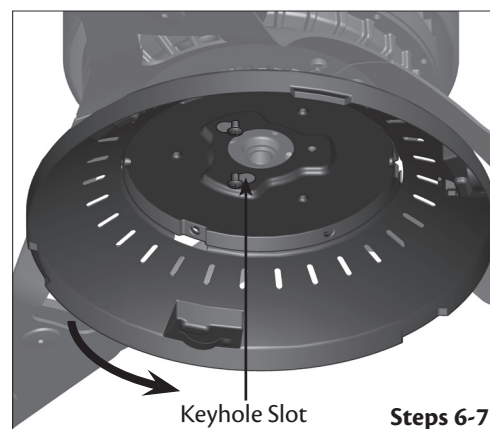
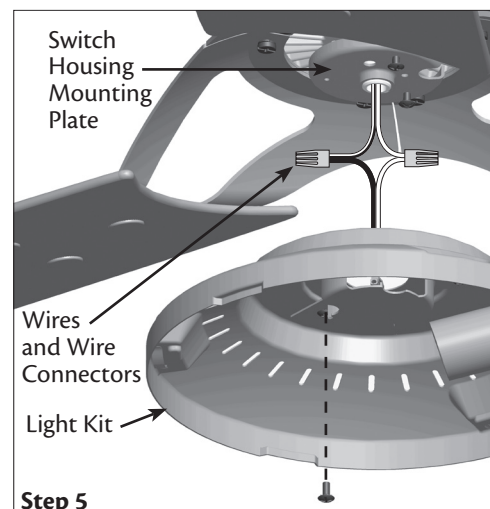
Installing the Light Kit on the Hunter Tribeca Ceiling Fan

5. Remove the wire connectors from the two wires in the fan labeled "Connect Light Here" or "For Light Use."

To connect the wires, hold the bare metal leads together and place a wire connector over them, then twist the wire connector clockwise until tight.

Connect the black wire with a white stripe from the fan to the black wire from the light kit. Connect the white wire from the fan to the white wire from the light kit. Secure all wire connections using wire connectors.

6. Align the two keyhole slots in the light kit with the two partially installed screws in the switch housing mounting plate. Make sure the wires and plug connectors are seated snugly in the top of the light kit.
7. Turn the light kit counterclockwise until the assembly screws are firmly situated in the narrow end of the keyhole slots. Install the remaining assembly screw into the light fixture. Tighten all three screws firmly.



WARNING: Improper installation could cause the light kit to fall.

Installing the Light Kit on the Hunter Tribeca Ceiling Fan

8. Install the included CFL light bulb into the light socket.
9. Raise the glass globe and align the indents in the glass globe with the tabs on the fitter. Twist the glass globe clockwise to secure it. The installation is complete and you can restore power to the ceiling fan.

Troubleshooting

Light does not come on.

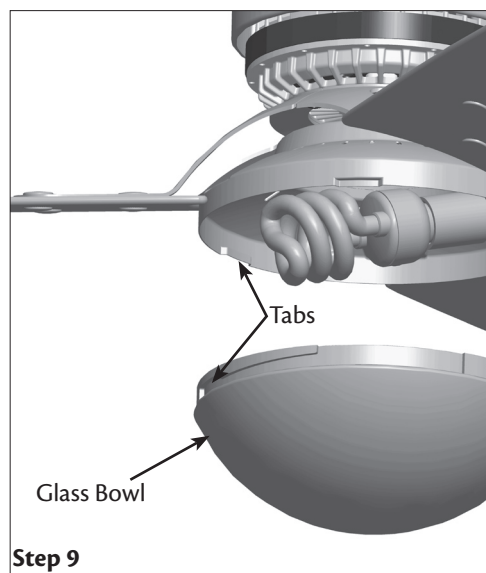
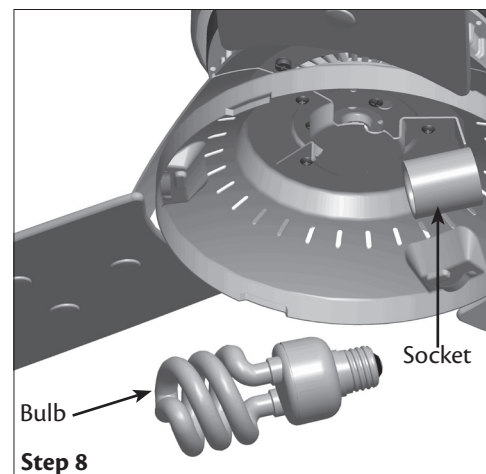
1. Make sure bulbs are installed properly.
2. Make sure breakers or fuses are on.
3. Verify that the light power lead is connected at the ceiling. Refer to your ceiling fan manual for locating assembly and wiring.

Glass rattles.

1. Make sure the glass globe is secure.

If you need parts or service assistance, please call 888-830-1326 or visit us at our Web site at <http://www.hunterfan.com>.

Hunter Fan Company
7130 Goodlett Farms Pkwy. # 400
Memphis, Tennessee 38016



This Light Fixture Weighs 3 lbs.