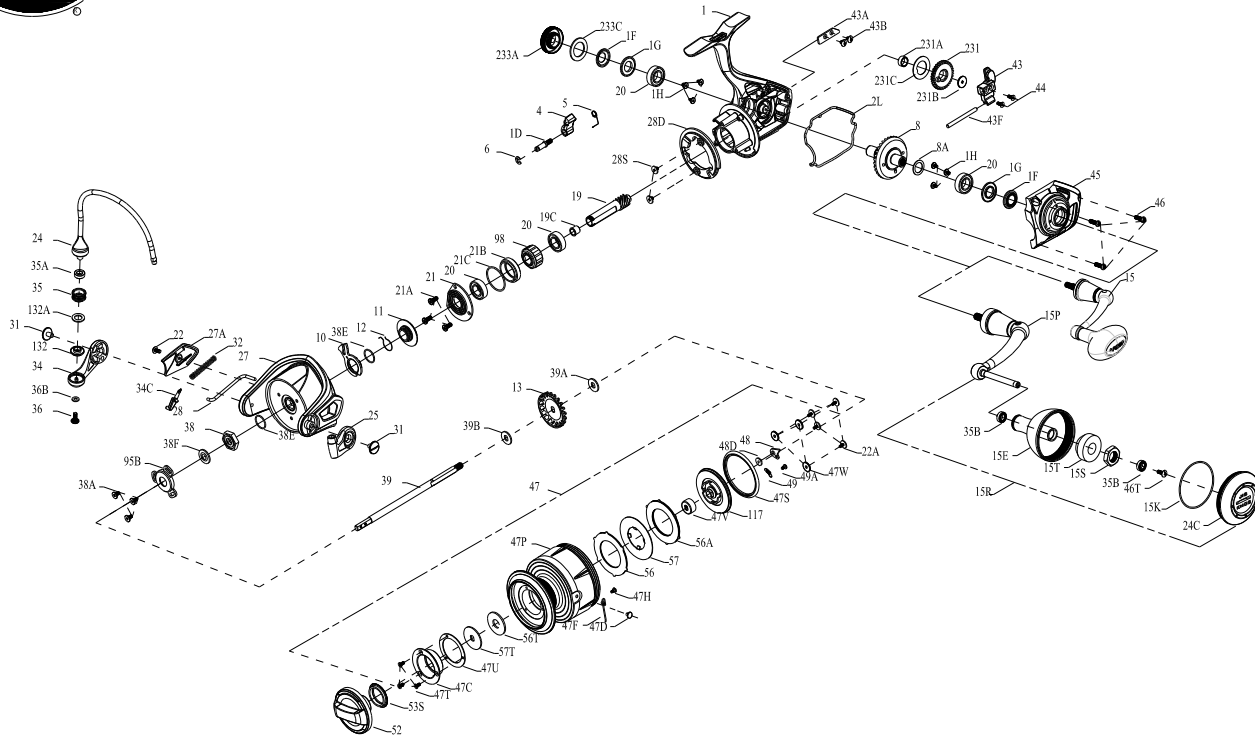




# PARTS LIST FOR MODEL SLAMMER III 6500 HS



KEY NO.	PART NO.	PENN STYLE NO.	DESCRIPTION
22A	1418982	22A-SLA3500	Drag Cover Screw
24	1419048	24-SLA6500	One Piece Bail
24C	1447673	24C-SLAI116500HS	Knob Cap
25	1339500	25-CLA5000	Bail Holder
27	1419042	27-SLA6500	Rotor
27A	1419046	27A-SLA6500	Rotor Cover
28	1419044	28-SLA6500	Rotor Trip Lever
28D	1447674	28D-SLAI116500HS	Rotor Brake
28S	1339512	28S-CLA5000	Rotor Brake Screw
31	1277055	31-SSV5500	Bail Arm Screw
32	1389467	32-CLA6000	Bail Spring
34	1389468	34-CLA6000	Bail Arm
34C	1389469	34C-CLA6000	Pivot Arm
35	1277059	35-SSV5500	Line Roller
35A	1419050	35A-SLA5500	Line Roller Bushing
35B	1377606	35A-BTL118000LC	Line Roller Ball Bearing
36	1422399	36-SLA9500	Line Roller Screw
36B	1417809	36B-CLA6000	Bail Arm Screw Washer
38	1419051	38-SLA5500	Rotor Nut
38A	1119121	20C-7000AF	Screw
38E	1418958	38E-SLA3500	Pinion Gear Seal
38F	1419052	38F-SLA5500	Rotor-Main Shaft Seal
39	1419033	39-SLA6500	Main Shaft
39A	1277066	39A-SSV5500	Spool Adjust Washer
39B	1277067	39B-SSV5500	Main Shaft Washer
43	1419031	43-SLA6500	Oscillation Slider
43A	1339536	43A-CLA5000	O/S Slider Guide
43B	1277070	43B-SSV5500	Screw
43F	1419029	43F-SLA6500	Guide Shaft
44	1277072	44-SSV5500	Main Shaft Screw
45	1447675	45-SLAI116500HS	Body Cover Assembly
46	1385567	46-CLA3000	Body Cover Screw
46T	1341500	3-SSV7500LC	A/R Button Screw
47	1447676	47-SLAI116500HS	Spool Assembly
47C	1419059	47C-SLA5500	Drag Cover
47D	1277078	47D-SSV5500	Line Clip
47F	1419068	47F-SLA6500	Line Clip Retainer
47H	1277054	28S-SSV5500	Rotor Brake Screw
47P	1447677	47P-SLAI116500HS	Spool
47S	1419065	47S-SLA5500	Spool Seal
47T	1339552	47T-CLA5000	Drag Cover Screw
47U	1418960	47U-SLA3500	Drag Cover Seal
47V	1419063	47V-SLA5500	Sealed Nut
47W	1419066	47W-SLA5500	Protective Washer
48	1419069	48-SLA5500	Click Plate
48D	1385579	48D-CLA3000	Clicker Spacer Ring
49	1259579	49-7000AF	Spring
49A	1341547	49A-SSV7500LC	Spool Clicker Spring Screw
52	1419070	52-SLA5500	Drag Knob Assembly
53S	1339555	53S-CLA5000	Drag Knob Seal
56	1419060	56-SLA5500	Drag Friction Washer
56A	1419062	56A-SLA5500	Drag Friction Washer
56T	1277089	56T-SSV5500	Drag Friction Washer
57	1419061	57-SLA5500	Keyed Drag Washer
57T	1419058	57T-SLA5500	Keyed Drag Washer
95B	1419009	95B-SLA3500	Rotor Nut Locking Plate
98	1277094	98-SSV5500	Clutch/Sleeve Assembly
117	1419064	117-SLA5500	Drag Drive Plate
132	1419049	132-SLA5500	Line Roller Collar
132A	1277097	132A-SSV5500	Line Roller Washer
231	1389600	231-CLA6000	O/S Gear
231A	1339566	231A-CLA5000	O/S Gear Bushing
231B	1277100	231B-SSV5500	O/S Gear Screw
231C	1389603	231C-CLA6000	O/S Gear Washer
233A	1447678	233A-SLAI116500HS	Handle Cap Assembly
233C	1419076	233C-SLA5500	Handle Cap Seal

KEY NO.	PART NO.	PENN STYLE NO.	DESCRIPTION
1	1447666	1-SLAI116500HS	Body Assembly
1D	1277140	1D-SSV7500	A/R Pawl Post
1F	1419019	1F-SLA5500	Body Side Seal
1G	1419020	1G-SLA5500	Body Side Seal Lock Plate
1H	1418957	1H-SLA3500	Body Side Screw
2L	1419036	2L-SLA6500	Body Seal
4	1389459	4-CLA6000	A/R Pawl
5	1339474	5-CLA5000	Pawl Spring
6	1277144	6-SSV7500	Retainer Clip
8	1447667	8-SLAI116500HS	Drive Gear
8A	1277037	8A-SSV5500	Drive Gear Shim Washer
10	1419936	10-CLA6000	A/R Pawl Holder
11	1419028	11-SLA5500	A/R Bushing
12	1339487	12-CLA5000	A/R Bushing Spring
13	1419053	13-SLA5500	Click Gear
15	1447668	15-SLAI116500HS	Handle Assembly
15E	1447670	15E-SLAI116500HS	Handle Knob
15K	1419073	15K-SLA5500	Handle Knob Cap Seal
15P	1447671	15P-SLAI116500HS	Sub-Handle Assembly
15R	1447669	15R-SLAI116500HS	Spare Handle Assembly
15S	1447679	15S-SLAI116500HS	Hexnut
15T	1447680	15T-SLAI116500HS	Clump Weight
19	1447672	19-SLAI116500HS	Pinion Gear
19C	1419023	19C-SLA5500	Pinion Gear Bushing
20	1308090	20-CFT5000	Ball Bearing
21	1419025	21-SLA5500	Ball Bearing Retainer
21A	1277154	21A-SSV7500	Pinion Retainer Screw
21B	1419024	21B-SLA5500	Pinion Bearing Collar
21C	1385684	21C-CLA8000	O Ring
22	1125962	231G-7000AF	Screw