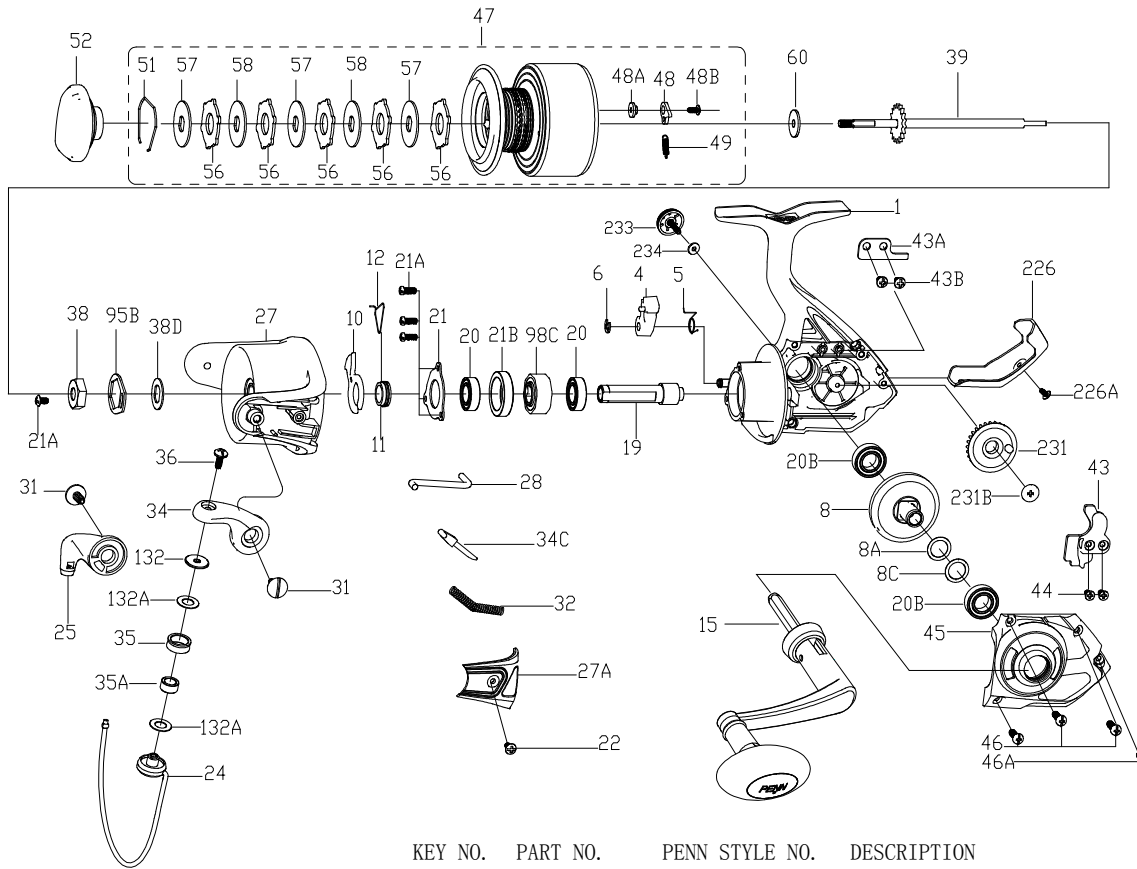




PARTS LIST FOR MODEL AS WRTH8000



KEY NO.	PART NO.	PENN STYLE NO.	DESCRIPTION
21A	1204016	21A-5000PUR	Screw (4 req)
21B	1324209	21B-BTLII5000	Collar
22	1204018	22-6000PUR	Bail Pivot Cover Screw
24	1514990	24-WRTH8000	Bail Wire
25	1514991	25-WRTH8000	Bail Holder
27	1514992	27-WRTH8000	Rotor
27A	1365756	27A-FRCII8000	Bail Pivot Cover
28	1365757	28-FRCII8000	Trip Lever
31	1365758	31-FRCII8000	Bail Arm Screw (2 req)
32	1313874	32-CFT8000	Bail Spring
34	1313875	34-CFT8000	Bail Arm
34C	1191656	34C-7000SG	Pivot Arm
35	1313876	35-CFT8000	Line Roller
35A	1313877	35A-CFT8000	Line Roller Bushing
36	1191704	36-7000SG	Bail Stud Screw
38	1191731	38-7000SG	Rotor Nut
38D	1308104	38D-CFT5000	Rotor Nut Washer
39	1514993	39-WRTH8000	Main Shaft Assembly
43	1485595	43-PURIII8000	Crosswind Block
43A	1191821	43A-7000SG	Crosswind Block Plate
43B	1203997	43B-3000PUR	Screw (2 req)
44	1191845	44-5000SG	Crosswind Block Screw (2 req)
45	1514994	45-WRTH8000	Housing Cover
46	1485592	46-PURIII8000	Housing Cover Screw (3 req)
46A	1485593	46A-PURIII8000	Housing Cover Screw
47	1514995	47-WRTH8000	Spool Assembly
48	1211625	48-5000SG	Click Tongue
48A	1211626	48A-5000SG	Click Tongue Washer
48B	1192658	22-2000SG	Spool Click Screw
49	1211627	49-5000SG	Click Tongue Spring
51	1308112	51-CFT5000	Drag Retaining Ring
52	1514996	52-WRTH8000	Drag Knob Assembly
56	1192038	56-7000SG	Drag Washer (5 req)
57	1514997	57-WRTH8000	Keyed Washer (3 req)
58	1192055	58-7000SG	Eared Washer (2 req)
60	1514998	60-WRTH8000	Thrust Washer
95B	1308115	95B-CFT5000	Rotor Locking Plate
98C	1485588	98C-PURIII8000	Clutch/Sleeve Assembly
132	1192298	132-7000SG	Roller Washer
132A	1192302	132A-3000SG	Line Roller Washer (2 req)
226	1485594	226-PURIII8000	Rear Cover
226A	1203978	22-3000PUR	Rear Cover Screw
231	1313886	231-CFT8000	Crosswind Gear
231B	1485578	231B-PURIII5000	Screw Crosswind Gear
233	1514979	233-WRTH5000	Lock Knob
234	1514980	234-WRTH5000	Lock Knob Washer

KEY NO.	PART NO.	PENN STYLE NO.	DESCRIPTION
1	1514986	1-WRTH8000	Housing
4	1190939	4-7000SG	A/R Dog
5	1190966	5-5000SG	Dog Spring
6	1190979	6-5000SG	Retaining Clip
8	1514987	8-WRTH8000	Main Gear
8A	1191031	8A-7000SG	Shim
8C	1485590	8C-PURIII8000	Shim C
10	1313864	10-CFT8000	A/R Holder
11	1191087	11-7000SG	Bushing
12	1313865	12-CFT8000	A/R Bushing Spring
15	1514988	15-WRTH8000	Handle Assembly
19	1488473	19-PURIII8000	Pinion Gear
20	1204012	20-5000PUR	Ball Bearing(2 req)
20B	1514989	20B-WRTH8000	Housing Bushing (2 req)
21	1192636	21-5000SG	Bearing Retainer

407-WRTH8000 Rev. 0 1-17-2019

1514059