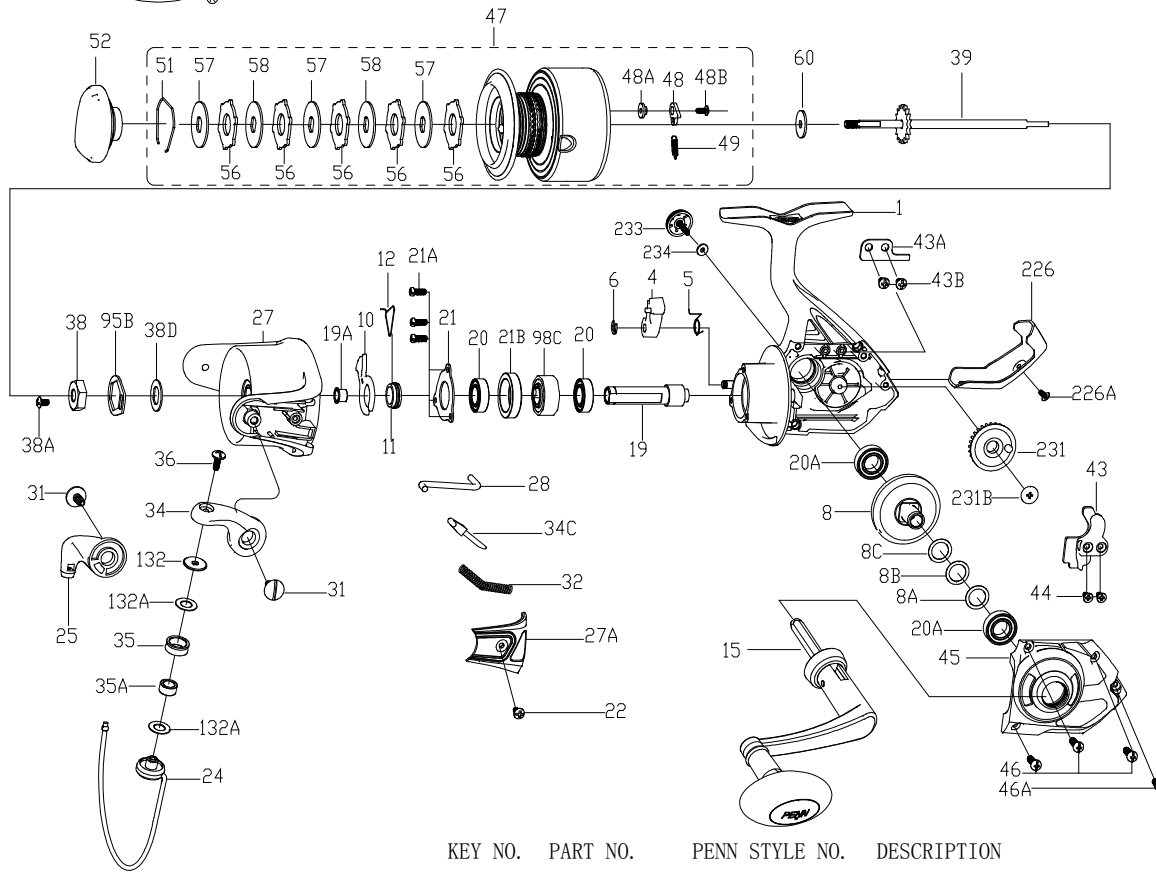




**PARTS LIST FOR MODEL AS WRTH6000**



KEY NO.	PART NO.	PENN STYLE NO.	DESCRIPTION
21A	1204016	21A-5000PUR	Bearing Retainer Screw (3 req)
21B	1324209	21B-BTLII5000	Collar
22	1204018	22-6000PUR	Bail Pivot Cover Screw
24	1514982	24-WRTH6000	Bail Wire
25	1514971	25-WRTH5000	Bail Holder
27	1514983	27-WRTH6000	Rotor
27A	1365748	27A-FRCII6000	Bail Pivot Cover
28	1365749	28-FRCII6000	Trip Lever
31	1365740	31-FRCII5000	Bail Arm Screw (2 req)
32	1200520	32-6000SG	Bail Spring
34	1308103	34-CFT6000	Bail Arm
34C	1191652	34C-5000SG	Pivot Arm
35	1308066	35-CFT3000	Line Roller
35A	1308067	35A-CFT3000	Line Roller Bushing
36	1191699	36-3000SG	Bail Stud Screw
38	1204049	38-5000PUR	Rotor Nut
38A	1365741	38A-FRCII5000	Rotor Locking Plate Screw
38D	1308104	38D-CFT5000	Rotor Nut Washer
39	1514984	39-WRTH6000	Main Shaft Assembly
43	1485579	43-PURIII5000	Crosswind Block
43A	1191820	43A-5000SG	Crosswind Block Plate
43B	1203997	43B-3000PUR	Screw (2 req)
44	1191845	44-5000SG	Crosswind Block Screw (2 req)
45	1514974	45-WRTH5000	Housing Cover
46	1485574	46-PURIII5000	Housing Cover Screw (3 req)
46A	1485575	46A-PURIII5000	Housing Cover Screw
47	1514985	47-WRTH6000	Spool Assembly
48	1211625	48-5000SG	Click Tongue
48A	1211626	48A-5000SG	Click Tongue Washer
48B	1192658	22-2000SG	Spool Click Screw
49	1211627	49-5000SG	Click Tongue Spring
51	1308112	51-CFT5000	Drag Retaining Ring
52	1514976	52-WRTH5000	Drag Knob Assembly
56	1192036	56-5000SG	Drag Washer (5 req)
57	1514977	57-WRTH5000	Keyed Washer (3 req)
58	1192053	58-5000SG	Eared Washer (2 req)
60	1514978	60-WRTH5000	Thrust Washer
95B	1308115	95B-CFT5000	Rotor Locking Plate
98C	1485497	98C-PURIII5000	Clutch/Sleeve Assembly
132	1192296	132-3000SG	Roller Washer
132A	1192302	132A-3000SG	Line Roller Washer (2 req)
226	1485576	226-PURIII5000	Rear Cover
226A	1485216	226A-PURIII3000	Rear Cover Screw
231	1485583	231-PURIII6000	Crosswind Gear
231B	1485578	231B-PURIII5000	Screw Crosswind Gear
233	1514979	233-WRTH5000	Lock Knob
234	1514980	234-WRTH5000	Lock Knob Washer

KEY NO.	PART NO.	PENN STYLE NO.	DESCRIPTION
1	1514981	1-WRTH6000	Housing
4	1190937	4-5000SG	A/R Dog
5	1190966	5-5000SG	Dog Spring
6	1190979	6-5000SG	Retaining Clip
8	1514967	8-WRTH5000	Main Gear
8A	1191030	8A-5000SG	Shim
8B	1485572	8B-PURIII5000	Shim B
8C	1485571	8C-PURIII5000	Shim C
10	1191066	10-5000SG	A/R Holder
11	1191085	11-5000SG	Bushing
12	1313865	12-CFT8000	A/R Bushing Spring
15	1514968	15-WRTH5000	Handle Assembly
19	1485498	19-PURIII5000	Pinion Gear
19A	1191253	19A-5000SG	Pinion Bushing
20	1204012	20-5000PUR	Ball Bearing (2 req)
20A	1514969	20A-WRTH5000	Housing Bushing (2 req)
21	1192636	21-5000SG	Bearing Retainer