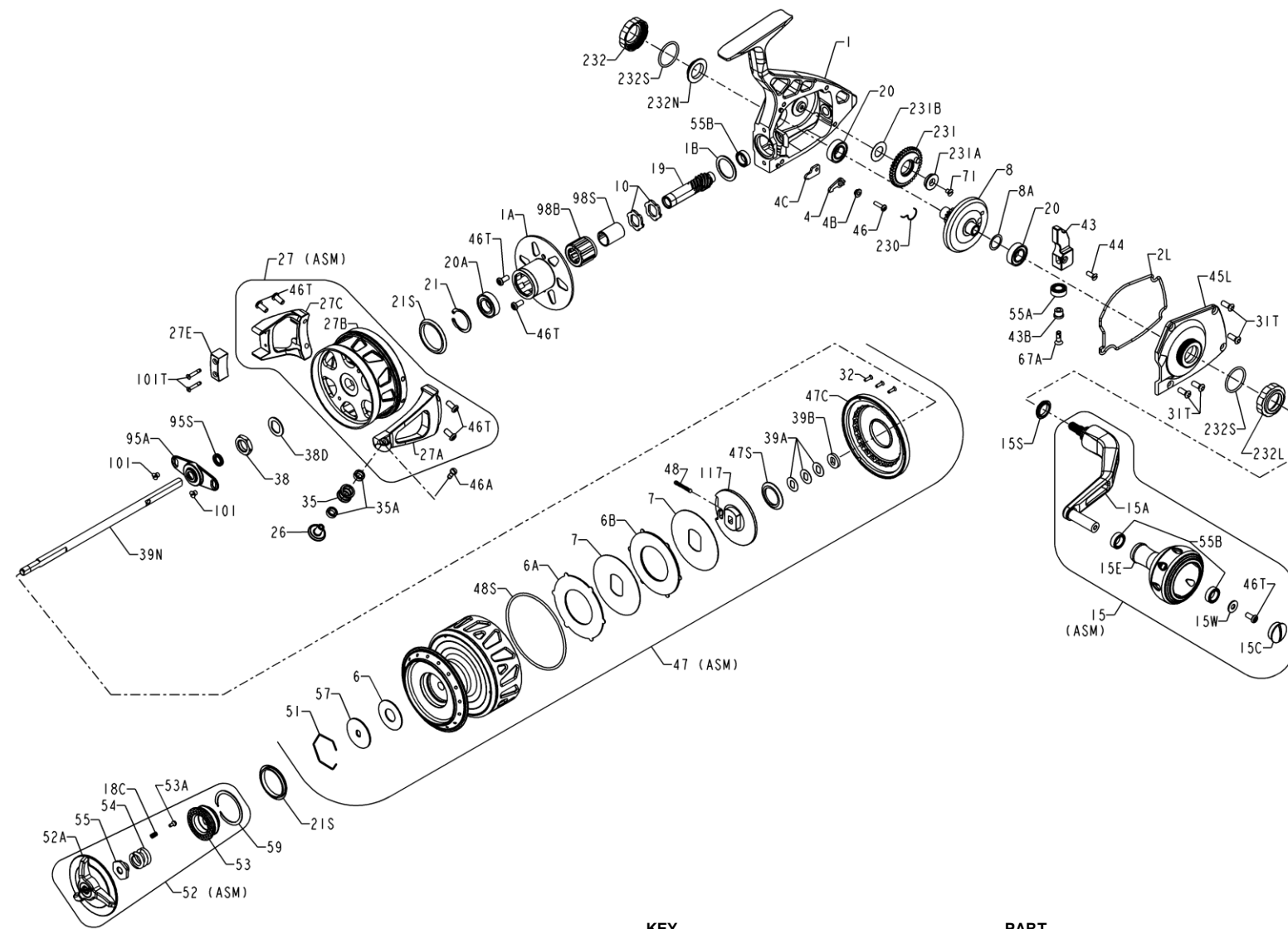




TRQII7500-BLS Bail-less Rotor 1339436



KEY No.	DESCRIPTION	PART No.
15	Handle Assembly (015 T2S7S)	1314728
15A	Handle Arm (015AT2S7-1S)	1410945
15C	Handle Cap Screw (015CT2S7S)	1323528
15E	Handle Knob (015ET2S7S)	1318905
15S	Handle Seal (015STS7)	1200419
15W	Washer- Flat (015WT2S7)	1347059
18C	Spring- Compression (018C015KG)	1181632
19	Pinion (019 T2S7)	1314730
20	Ball Bearing (020 6500)(2 req)	1181789
20A	Bearing- Ball (020 TS7)	1191260
21	Ring- Retaining (021 TS7)	1192641
21S	Seal (021STS7)(2 req)	1191276
26	Stud- Bail-less Roller (026 T2S7MS)	1416419
27	Rotor Assembly (027 T2S7S)	1415393
27A	Rotor Roller Arm (027AT2S7MS)	1410971
27B	Rotor Cup (027BT2S7S)	1314735
27C	Balance Weight Arm (027CT2S7MS)	1410973
27E	Balance Weight (027ETS7M)	1225788
31T	Screw (031TT2S7)(4 req)	1314745
32	Screw FH (032 975LD)(3 req)	1182747
35	Line Roller (035 TS7)	1205239
35A	Ball Bearing (035A950M)(2 req)	1182951
38	Nut- Rotor (038 9500)	1183160
38D	Washer- Rotor Keyed (038DSSV7500)	1277168
39A	Shim- Double D (039AT2S7)(3 req)	1314748
39B	Washer- Double D (039BT2S7)	1314749
39N	Spool Shaft (039NTS7)	1251997
43	Crosswind Block (043 T2S7)	1406598
43B	Bearing- Bushing (043BTS7)	1192690
44	Screw FH (044 TS7)	1225769
45L	Left Side Plate (045LT2S7S)	1314751
46	Screw (046 4300)	1183567
46A	Line Roller Screw (046 TS5M)	1225782
46T	Screw PH (046TTS7)(7 req)	1191914
47	Spool Assembly (047 T2S7S)	1420138
47C	Drag Cover (047CT2S7)	1314755
47S	Seal (047SSSV5500)	1277082
48	Click Tongue Asm (048 5600)	1183710
48S	O-Ring- Drag Cover (048STS7)	1211091
51	Retaining Ring (051 8000CV2)	1245795
52	Drag Knob Assembly (052 T2S7S)	1314756
52A	Drag Knob (052 T2S7-1S)	1337169
53	Drag Knob Insert (053 T2S7)	1318910
53A	Pin- Drag Knob Click (053A5600)	1183846
54	Spring- Compression (054 704)	1192020
55	Nut- Drag (055 704)	1192028
55A	Bearing (055ATS7)	1203081
55B	Bearing (055 TS7)(3 req)	1192029
57	Washer- Drag Metal Keyed (057 760)	1192695
59	Ring- Retaining (059 TS7)	1233962
67A	Screw FH (067A070)	1184111
71	Screw FH (071 TS7)	1200354
95A	Rotor Nut Cover (095AT2S7)	1314758
95S	Seal- Spool Shaft (095STS7)	1192188
98B	Bearing- Clutch (098B525MAG2)	1239046
98S	Sleeve- Clutch (098S525MAG2)	1239047
101	Screw FH. (101 050S)(2 req)	1184404
101T	Screw FH.(101 TS5M)(2 req)	1225783
117	Drive Plate (117 T2S7)	1314759
230	Spring- Dog (230 T2S7)	1314762
231	Gear- Crosswind (231 TS7)	1192740
231A	Bushing- Crosswind Shaft (231ATS7)	1192741
231B	Washer (231BTS7)	1192742
232	Cover Bearing Open (232 TS7S)	1235634
232L	Cover Bearing Open LH (232LTS7S)	1390209
232S	O-Ring (232ST2S7)(2 req)	1314763
233N	Bearing Cap (233NTS7S)	1234373

KEY No.	DESCRIPTION	PART No.
1	Housing Assembly (001 T2S7S)	1347068
1A	Clutch Housing (001AT2S7S)	1314718
1B	Rubber Flat Washer (001BT2S7-1)	1435254
2L	Side Plate Seal (002LT2S7)	1314721
4	Dog (004 T2S7)	1314722
4B	Dog Bushing (004BT2S7)	1314723
4C	Dog Plate (004CT2S7)	1314724
6	Washer- Drag (031) (006 309)	1180917
6A	Drag Washer Asm 1 Sided (006 T2S7-1)	1415388
6B	Drag Washer Asm 2 Sided (006 T2S7-2)	1415389
7	Washer- Metal Keyed (007 TS7)(2 req)	1192588
8	Gear Assembly (008 T2S7)	1314725
8A	Shim-.002" (008ATS7-2) (as needed)	1229048
8A	Shim-.004" (008ATS7-4) (as needed)	1229049
8A	Shim-.008" (008ATS7-8) (as needed)	1229050
10	Ratchet (010 T2S7)(2 req)	1314727