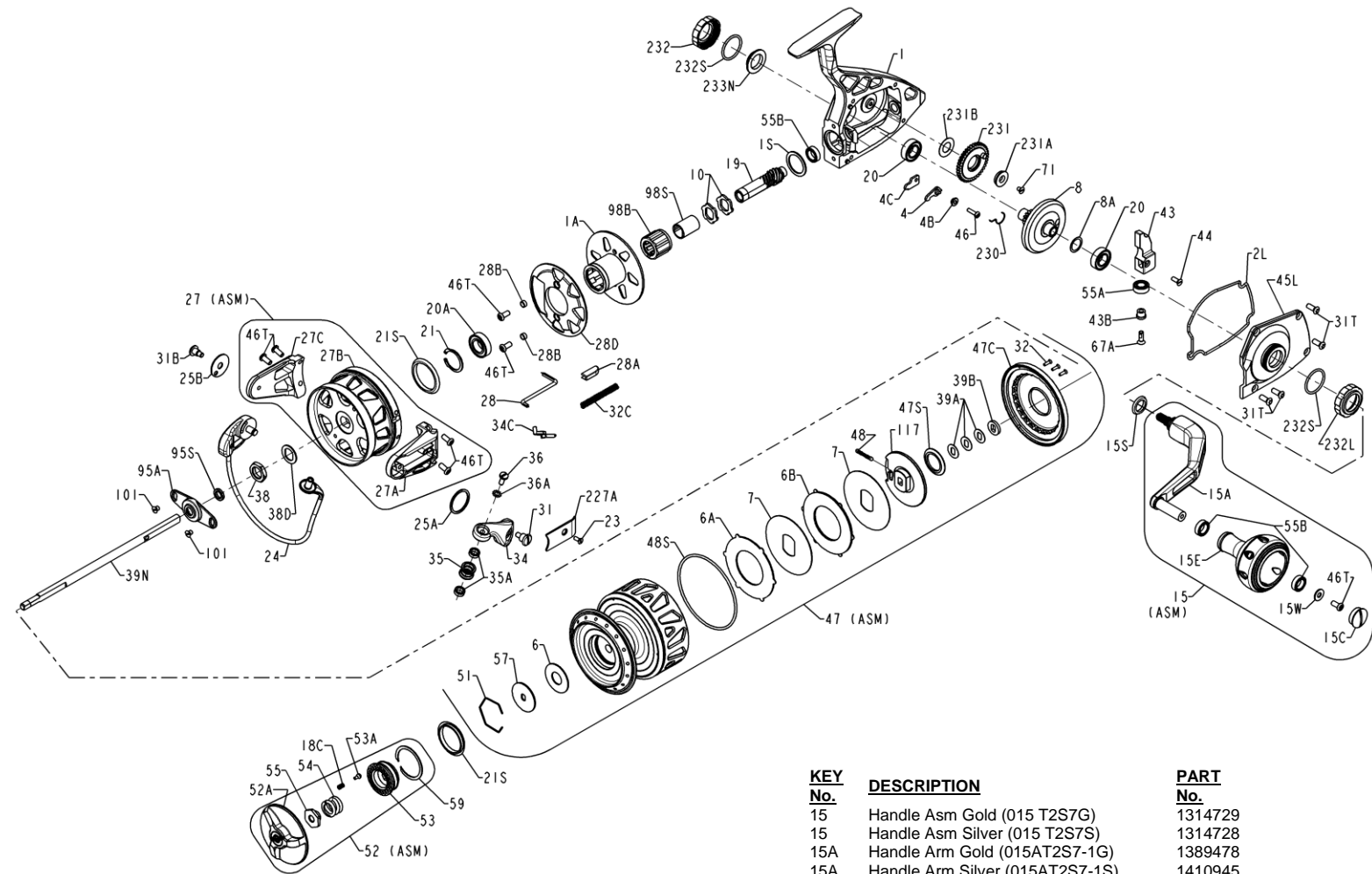




TRQII7500-G (Gold) 1339435 & TRQII7500-S (Silver) 1403980



| <u>KEY No.</u> | <u>DESCRIPTION</u> | <u>PART No.</u> |
|----------------|--------------------------------------|-----------------|
| 1 | Housing Asm Gold (001 T2S7G) | 1347119 |
| 1 | Housing Asm Silver (001 T2S7S) | 1347068 |
| 1A | Clutch Housing Gold (001AT2S7G) | 1314719 |
| 1A | Clutch Housing Silver (001AT2S7S) | 1314718 |
| 1S | Seal (001ST2S7) | 1314720 |
| 2L | Side Plate Seal (002LT2S7) | 1314721 |
| 4 | Dog (004 T2S7) | 1314722 |
| 4B | Dog Bushing (004BT2S7) | 1314723 |
| 4C | Dog Plate (004CT2S7) | 1314724 |
| 6 | Washer- Drag (006 309) | 1180917 |
| 6A | Drag Washer Asm 1 Sided (006 T2S7-1) | 1415388 |
| 6B | Drag Washer Asm 2 Sided (006 T2S7-2) | 1415389 |
| 7 | Keyed Drag Washer (007 TS7) (2 req) | 1192588 |
| 8 | Gear Asm (008 T2S7) | 1314725 |
| 8A | Shim 002" (008ATS7-2) (as needed) | 1229048 |
| 8A | Shim 004" (008ATS7-4) (as needed) | 1229049 |
| 8A | Shim 008" (008ATS7-8) (as needed) | 1229050 |
| 10 | Ratchet (010 T2S7) (2 req) | 1314727 |

| <u>KEY No.</u> | <u>DESCRIPTION</u> | <u>PART No.</u> |
|----------------|-------------------------------------|-----------------|
| 15 | Handle Asm Gold (015 T2S7G) | 1314729 |
| 15 | Handle Asm Silver (015 T2S7S) | 1314728 |
| 15A | Handle Arm Gold (015AT2S7-1G) | 1389478 |
| 15A | Handle Arm Silver (015AT2S7-1S) | 1410945 |
| 15C | Handle Cap Screw Gold (015CT2S7G) | 1323529 |
| 15C | Handle Cap Screw Silver(015CT2S7S) | 1323528 |
| 15E | Handle Knob- Gold (015ET2S7G) | 1318906 |
| 15E | Handle Knob- Silver (015ET2S7S) | 1318905 |
| 15S | Seal (015STS7) | 1200419 |
| 15W | Washer- Flat (015WT2S7) | 1347059 |
| 18C | Spring- Compression (018C015KG) | 1181632 |
| 19 | Pinion (019 T2S7) | 1314730 |
| 20 | Bearing (020 6500)(2 req) | 1181789 |
| 20A | Bearing (020 TS7) | 1191260 |
| 21 | Ring- Retaining (021 TS7) | 1192641 |
| 21S | Seal (021STS7) (2 req) | 1192126 |
| 23 | Screw (023 T2S7) | 1316317 |
| 24 | Bail Wire Assembly (024 T2S7) | 1314731 |
| 25A | Bail Arm Washer (025AT2S7) | 1314733 |
| 25B | Bail Cam Washer (025BT2S7) | 1317508 |
| 27 | Rotor Assembly Gold (027 T2S7G) | 1415394 |
| 27 | Rotor Assembly Silver (027 T2S7S) | 1415393 |
| 27A | Rotor Roller Arm-Gold (027AT2S7G) | 1314739 |
| 27A | Rotor Roller Arm-Silver (027AT2S7S) | 1314738 |
| 27B | Rotor Cup- Gold (027BT2S7G) | 1314736 |
| 27B | Rotor Cup- Silver (027BT2S7S) | 1314735 |
| 27C | Rotor Cam Arm- Gold (027CT2S7G) | 1314742 |
| 27C | Rotor Cam Arm- Silver (027CT2S7S) | 1314741 |

| <u>KEY No.</u> | <u>DESCRIPTION</u> | <u>PART No.</u> |
|----------------|---------------------------------------|-----------------|
| 28 | Trip Lever (028 T2S7) | 1454740 |
| 28A | Guide (028AT2S7) | 1314743 |
| 28B | Bushing (028BTS7) (2 req) | 1200338 |
| 28D | Friction Ring (028DTS7) | 1200341 |
| 31 | Bail Arm Screw (031 T2S7) | 1314744 |
| 31B | Cam Arm Screw (031BT2S7) | 1318479 |
| 31T | Screw (031TT2S7) (4req) | 1314745 |
| 32 | Flat Head Screw (032 975LD) (3req) | 1182747 |
| 32C | Bail Spring (032 CFT8000) | 1313874 |
| 34 | Bail Arm- Gold (034 T2S7G) | 1314747 |
| 34 | Bail Arm- Silver (034 T2S7S) | 1314746 |
| 34C | Pivot Arm (34CSSV7500) | 1277164 |
| 35 | Line Roller (035 TS7) | 1205239 |
| 35A | Bearing (035A950M) (2 req) | 1182951 |
| 36 | Line Roller Screw (036 750) | 1183016 |
| 36A | Washer- External Tooth Lock(036A750) | 1183032 |
| 38 | Nut- Rotor (038 9500) | 1183160 |
| 38D | Washer- Rotor Keyed (038DSSV7500) | 1277168 |
| 39A | Shim Double D (039AT2S7) (as needed) | 1314748 |
| 39B | Washer- Double D (039BT2S7) | 1314749 |
| 39N | Spool Shaft (039NTS7) | 1251997 |
| 43 | Crosswind Block (043 T2S7) | 1406598 |
| 43B | Bushing (043BTS7) | 1192690 |
| 44 | Screw (044 TS7) | 1225769 |
| 45L | Side Plate Gold (045LT2S7G) | 1314752 |
| 45L | Side Plate Silver (045LT2S7S) | 1314751 |
| 46 | Screw (046 4300) | 1183567 |
| 46T | Screw (046TTS7)(7 req) | 1191914 |
| 47 | Spool Assembly Gold (047 T2S7G) | 1420137 |
| 47 | Spool Assembly Silver (047 T2S7S) | 1420138 |
| 47C | Drag Cover (047CT2S7) | 1314755 |
| 47S | Drag Drive Plate Seal (047SSSV5500) | 1277082 |
| 48 | Click Tongue Asm (048 5600) | 1183710 |
| 48S | O-Ring (048STS7) | 1211091 |
| 51 | Retainer (051 8000CV2) | 1245795 |
| 52 | Drag Knob Assembly Gold(052 T2S7G) | 1314757 |
| 52 | Drag Knob Assembly Silver (052 T2S7S) | 1314756 |
| 52A | Drag Knob - Gold (052 T2S7-1G) | 1337170 |
| 52A | Drag Knob - Silver (052 T2S7-1S) | 1337169 |
| 53 | Drag Knob Insert (053 T2S7) | 1318910 |
| 53A | Pin- Drag Knob Click (053A5600) | 1183846 |
| 54 | Spring- Compression (054 704) | 1192020 |
| 55 | Drag Nut (055 704) | 1192028 |
| 55A | Bearing (055ATS7) | 1203081 |
| 55B | Bearing (055 TS7)(3 req) | 1192029 |
| 57 | Drag Washer Keyed (057 760) | 1192695 |
| 59 | Ring- Retaining (059 TS7) | 1233962 |
| 67A | Screw Flat Head(067A070) | 1184111 |
| 71 | Flat Head Screw (071 TS7) | 1200354 |
| 95A | Rotor Nut Cover (095AT2S7) | 1314758 |
| 95S | Seal- Spool Shaft (095STS7) | 1192188 |
| 98B | Bearing- Clutch (098B525) | 1184377 |
| 98S | Sleeve- Clutch (098S525MAG2) | 1239047 |
| 101 | Flat Head Screw (101 050S) (2 req) | 1184404 |
| 117 | Drive Plate (117 T2S7) | 1314759 |
| 227A | Rotor Arm Cover Gold (227AT2S7G) | 1314761 |
| 227A | Rotor Arm Cover Silver (227AT2S7S) | 1314760 |
| 230 | Spring- Dog (230 T2S7) | 1314762 |
| 231 | Gear- Crosswind (231 TS7) | 1192740 |
| 231A | Bushing- Crosswind Gear (231ATS7) | 1192741 |
| 231B | Washer (231BTS7) | 1192742 |
| 232 | Bearing Cover Gold (232 TS7G) | 1200359 |
| 232 | Bearing Cover Silver (232 TS7S) | 1235634 |
| 232L | Bearing Cover LH Gold (232LTS7G) | 1253565 |
| 232L | Bearing Cover LH Silver(232LTS7S) | 1390209 |
| 232S | O-Ring (232ST2S7) (2 req) | 1314763 |
| 233N | Cap-Bearing Gold (233NTS7G) | 1253568 |
| 233N | Cap-Bearing Silver (233NTS7S) | 1234373 |