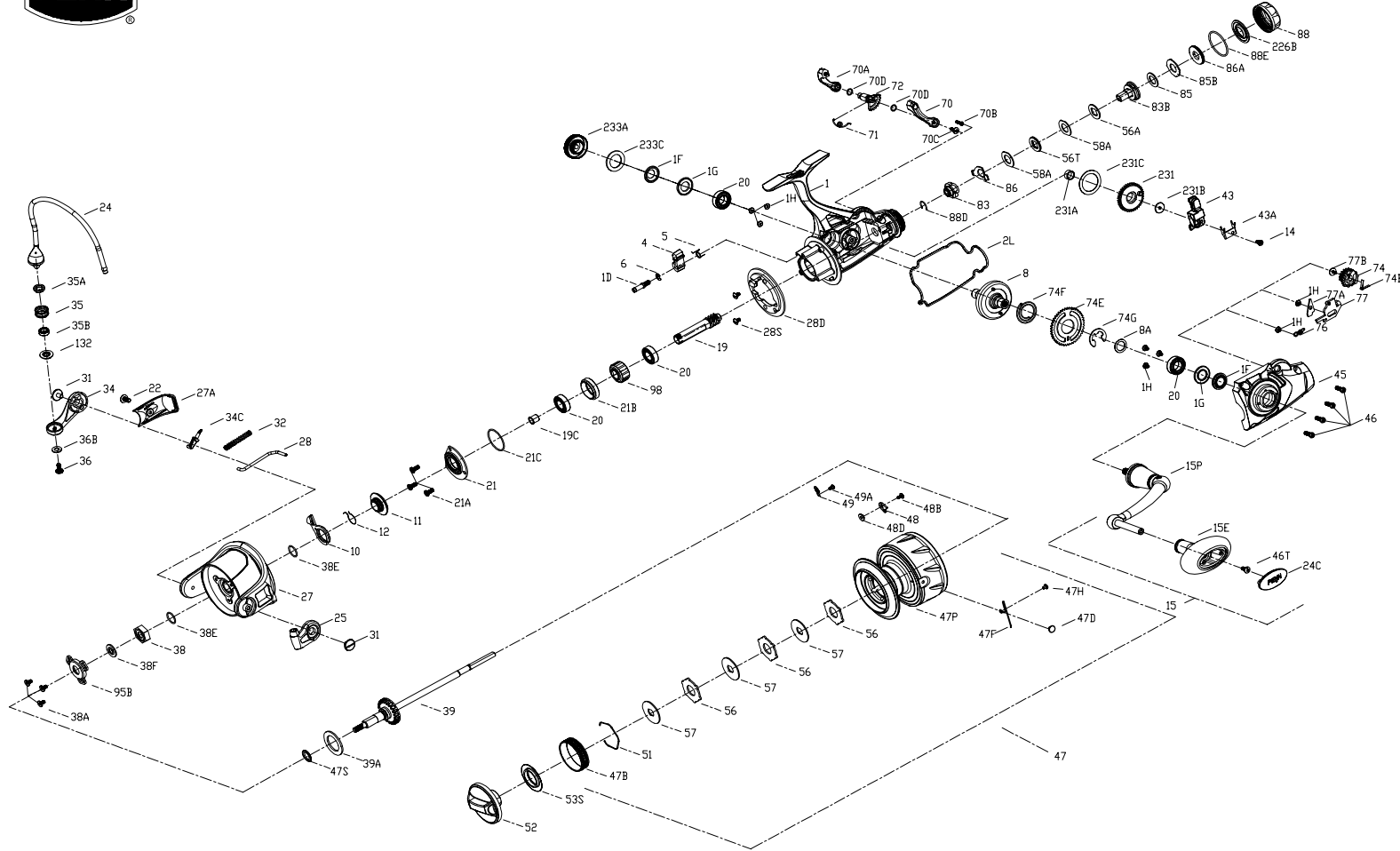




# PARTS LIST FOR MODEL SSVI6500LL



| KEY NO. | PART NO. | PENN STYLE NO.   | DESCRIPTION                        |
|---------|----------|------------------|------------------------------------|
| 31      | 1277055  | 31-SSV5500       | Screw                              |
| 32      | 1389467  | 32-CLA6000       | Bail Spring                        |
| 34      | 1389468  | 34-CLA6000       | Bail Arm                           |
| 34C     | 1389469  | 34C-CLA6000      | Pivot Arm                          |
| 35      | 1457403  | 35-SLAIII6500HS  | Line Roller                        |
| 35A     | 1457404  | 35A-SLAIII6500HS | Line Roller Bushing                |
| 35B     | 1377606  | 35A-BTLII8000LC  | Ball Bearing                       |
| 36      | 1422399  | 36-SLA9500       | Line Roller Screw                  |
| 36B     | 1417809  | 36B-CLA6000      | Bail Arm Screw Washer              |
| 38      | 1419051  | 38-SLA5500       | Rotor Nut                          |
| 38A     | 1119121  | 20C-7000AF       | Screw                              |
| 38E     | 1418958  | 38E-SLA3500      | Pinion Gear Seal                   |
| 38F     | 1419052  | 38F-SLA5500      | Rotor-Main Shaft Seal              |
| 39      | 1494757  | 39-SSVI6500LL    | Main Shaft Assembly                |
| 39A     | 1494758  | 39A-SSVI6500LL   | Washer                             |
| 43      | 1494759  | 43-SSVI6500LL    | Slider                             |
| 43A     | 1494760  | 43A-SSVI6500LL   | Slider Guide                       |
| 45      | 1494761  | 45-SSVI6500LL    | Body Cover Assembly                |
| 46      | 1277074  | 46-SSV5500       | Body Cover Screw                   |
| 46T     | 1494762  | 46T-SSVI6500LL   | Screw                              |
| 47      | 1494763  | 47-SSVI6500LL    | Spool Assembly                     |
| 47B     | 1277076  | 47B-SSV5500      | Spool Band                         |
| 47D     | 1494764  | 47D-SSVI6500LL   | Line Clip                          |
| 47F     | 1277080  | 47F-SSV5500      | Line Clip Retainer                 |
| 47H     | 1294638  | 49A-CLA2000      | Spool Click Spring Screw           |
| 47P     | 1494765  | 47P-SSVI6500LL   | Spool                              |
| 47S     | 1494699  | 47S-SSVI2500LL   | Seal                               |
| 48      | 1385578  | 48-CLA3000       | Spool Click Plate                  |
| 48B     | 1385581  | 48B-CLA3000      | Screw                              |
| 48D     | 1385579  | 48D-CLA3000      | Spool Clicker Spacer Ring          |
| 49      | 1385580  | 49-CLA3000       | Spool Click Spring                 |
| 49A     | 1341547  | 49A-SSV7500LC    | Screw                              |
| 51      | 1447925  | 51-CFTII5000     | Drag Washer Retainer               |
| 52      | 1494766  | 52-SSVI6500LL    | Drag Knob Assembly                 |
| 53S     | 1447927  | 53S-CFTII5000    | Drag Knob Seal                     |
| 56      | 1339557  | 56-CLA5000       | Drag Friction Washer               |
| 56A     | 1494767  | 56A-SSVI6500LL   | Friction Washer                    |
| 56T     | 1494768  | 56T-SSVI6500LL   | Drag Washer                        |
| 57      | 1339558  | 57-CLA5000       | Keyed Drag Washer                  |
| 58A     | 1494769  | 58A-SSVI6500LL   | Eared Washer                       |
| 70      | 1494770  | 70-SSVI6500LL    | Lever Left                         |
| 70A     | 1494771  | 70A-SSVI6500LL   | Lever Right                        |
| 70B     | 1277128  | 70B-SSVI6500LL   | Screw                              |
| 70C     | 1277003  | 70C-SSV4500LL    | Screw                              |
| 70D     | 1494708  | 70D-SSVI2500LL   | O-Ring                             |
| 71      | 1494772  | 71-SSVI6500LL    | Spring                             |
| 72      | 1494773  | 72-SSVI6500LL    | Switch Cam                         |
| 74      | 1494774  | 74-SSVI6500LL    | Cam Gear                           |
| 74B     | 1494775  | 74B-SSVI6500LL   | Spring                             |
| 74E     | 1494776  | 74E-SSVI6500LL   | Gear                               |
| 74F     | 1494777  | 74F-SSVI6500LL   | Spring                             |
| 74G     | 1277014  | 74G-SSV4500LL    | Live Liner Three Pawl Lever E-Clip |
| 76      | 1494778  | 76-SSVI6500LL    | Spring                             |
| 77      | 1494779  | 77-SSVI6500LL    | Stop Claw                          |
| 77A     | 1494780  | 77A-SSVI6500LL   | Plate                              |
| 77B     | 1289972  | 77B-SSV4500LL    | Screw                              |
| 83      | 1494781  | 83-SSVI6500LL    | Ratchet                            |
| 83B     | 1494782  | 83B-SSVI6500LL   | Support Assembly                   |
| 85      | 1494783  | 85-SSVI6500LL    | Friction Washer                    |
| 85B     | 1494784  | 85B-SSVI6500LL   | Eared Washer                       |
| 86      | 1494785  | 86-SSVI6500LL    | Spring                             |
| 86A     | 1494786  | 86A-SSVI6500LL   | Nut                                |
| 88      | 1494787  | 88-SSVI6500LL    | Knob                               |
| 88D     | 1494788  | 88D-SSVI6500LL   | Retainer                           |
| 88E     | 1494789  | 88E-SSVI6500LL   | O-Ring                             |
| 95B     | 1419009  | 95B-SLA3500      | Rotor Nut Locking Plate            |
| 98      | 1277094  | 98-SSV5500       | One Way Clutch Bearing Assembly    |
| 132     | 1457405  | 132-SLAIII6500HS | Line Roller Collar                 |
| 226B    | 1494790  | 226B-SSVI6500LL  | Seal                               |
| 231     | 1389600  | 231-CLA6000      | O/S Gear                           |
| 231A    | 1339566  | 231A-CLA5000     | O/S Gear Bushing                   |
| 231B    | 1277100  | 231B-SSV5500     | O/S Gear Screw                     |
| 231C    | 1389603  | 231C-CLA6000     | O/S Gear Washer                    |
| 233A    | 1419075  | 233A-SLA5500     | Handle Cap Assembly                |
| 233C    | 1419076  | 233C-SLA5500     | Handle Cap Seal                    |

| KEY NO. | PART NO. | PENN STYLE NO. | DESCRIPTION               |
|---------|----------|----------------|---------------------------|
| 1       | 1494745  | 1-SSVI6500LL   | Body Assembly             |
| 1D      | 1277140  | 1D-SSV7500     | A/R Pawl Post             |
| 1F      | 1419019  | 1F-SLA5500     | Body Side Seal            |
| 1G      | 1419020  | 1G-SLA5500     | Body Side Seal Lock Plate |
| 1H      | 1418957  | 1H-SLA3500     | Body Side Screw           |
| 2L      | 1494746  | 2L-SSVI6500LL  | Body Seal                 |
| 4       | 1389459  | 4-CLA6000      | A/R Pawl                  |
| 5       | 1339474  | 5-CLA5000      | Pawl Spring               |
| 6       | 1277144  | 6-SSV7500      | Retainer Clip             |
| 8       | 1494747  | 8-SSVI6500LL   | Drive Gear Assembly       |
| 8A      | 1277037  | 8A-SSV5500     | Drive Gear Shim Washer    |
| 10      | 1419936  | 10-CLA6000     | A/R Pawl Holder           |
| 11      | 1419028  | 11-SLA5500     | A/R Bushing               |
| 12      | 1339487  | 12-CLA5000     | A/R Bushing Spring        |
| 14      | 1276992  | 14-SSVI6500LL  | O/S Slider Retainer Screw |
| 15      | 1494748  | 15-SSVI6500LL  | Handle Assembly           |
| 15E     | 1494749  | 15E-SSVI6500LL | Handle Knob               |

| KEY NO. | PART NO. | PENN STYLE NO.   | DESCRIPTION           |
|---------|----------|------------------|-----------------------|
| 15P     | 1494750  | 15P-SSVI6500LL   | Sub-Handle Assembly   |
| 19      | 1494751  | 19-SSVI6500LL    | Pinion Gear           |
| 19C     | 1419023  | 19C-SLA5500      | Pinion Gear Bushing   |
| 20      | 1308090  | 20-CFT5000       | Ball Bearing          |
| 21      | 1419025  | 21-SLA5500       | Ball Bearing Retainer |
| 21A     | 1277154  | 21A-SSV7500      | Screw                 |
| 21B     | 1419024  | 21B-SLA5500      | Pinion Bearing Collar |
| 21C     | 1385684  | 21C-CLA8000      | O Ring                |
| 22      | 1276928  | 22-SSV3500       | Rotor Cover Screw     |
| 24      | 1494752  | 24-SSVI6500LL    | Bai Assembly          |
| 24C     | 1494753  | 24C-SSVI6500LL   | Handle Knob Cap       |
| 25      | 1339500  | 25-CLA5000       | Bail Holder           |
| 27      | 1494754  | 27-SSVI6500LL    | Rotor                 |
| 27A     | 1494755  | 27A-SSVI6500LL   | Rotor Cover           |
| 28      | 1494756  | 28-SSVI6500LL    | Rotor Trip Lever      |
| 28D     | 1447674  | 28D-SLAIII6500HS | Rotor Brake           |
| 28S     | 1277063  | 38A-SSV55000     | Screw                 |