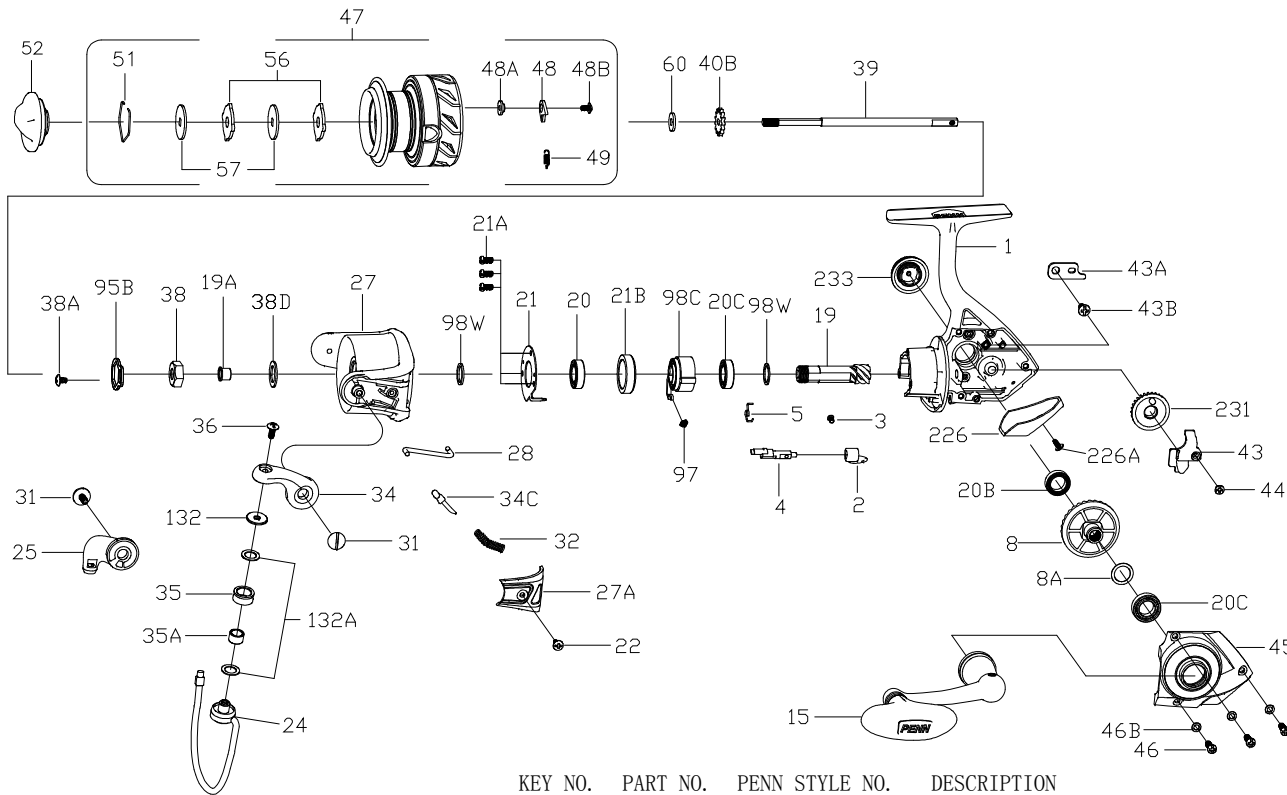




PARTS LIST FOR MODEL FRCIII2000



| KEY NO. | PART NO. | PENN STYLE NO. | DESCRIPTION |
|---------|----------|----------------|--------------------------------|
| 1 | 1514305 | 1-FRCIII2000 | Housing Assembly |
| 2 | 1190889 | 2-2000SG | A/R Lever |
| 3 | 1190922 | 3-2000SG | A/R Lever Screw |
| 4 | 1313805 | 4-CFT2500 | A/R Shaft |
| 5 | 1313806 | 5-CFT2500 | A/R Spring |
| 8 | 1308047 | 8-CFT3000 | Main Gear |
| 8A | 1191028 | 8A-3000SG | Shim |
| 15 | 1514306 | 15-FRCIII2000 | Handle Assembly |
| 19 | 1364313 | 19-BTLII2500 | Pinion Gear |
| 19A | 1364314 | 19A-BTLII2500 | Pinion Bushing |
| 20 | 1308050 | 20-CFT3000 | Ball Bearing |
| 20B | 1203974 | 20B-3000PUR | Ball Bearing |
| 20C | 1203975 | 20C-3000PUR | Ball Bearing(2 req) |
| 21 | 1192629 | 21-2000SG | Bearing Retainer |
| 21A | 1192644 | 21A-3000SG | Bearing Retainer Screw (3 req) |
| 21B | 1192646 | 21B-2000SG | Collar |
| 22 | 1203978 | 22-3000PUR | Bail Pivot Cover Screw |

| KEY NO. | PART NO. | PENN STYLE NO. | DESCRIPTION |
|---------|----------|----------------|------------------------------|
| 24 | 1313830 | 24-CFT2000 | Bail Wire |
| 25 | 1313810 | 25-CFT2500 | Bail Holder |
| 27 | 1365714 | 27-FRCII2000 | Rotor |
| 27A | 1313832 | 27A-CFT2000 | Bail Pivot Cover |
| 28 | 1313833 | 28-CFT2000 | Trip Lever |
| 31 | 1313814 | 31-CFT2500 | Bail Arm Screw (2 req) |
| 32 | 1191583 | 32-2000SG | Bail Spring |
| 34 | 1313815 | 34-CFT2500 | Bail Arm |
| 34C | 1313816 | 34C-CFT2500 | Pivot Arm |
| 35 | 1313817 | 35-CFT2500 | Line Roller |
| 35A | 1313818 | 35A-CFT2500 | Line Roller Bushing |
| 36 | 1251748 | 36-1000FRC | Bail Stud Screw |
| 38 | 1191727 | 38-2000SG | Rotor Nut |
| 38A | 1203995 | 38A-3000PUR | Rotor Locking Plate Screw |
| 38D | 1308070 | 38D-CFT3000 | Rotor Nut Washer |
| 39 | 1313834 | 39-CFT2000 | Main Shaft |
| 40B | 1191778 | 40B-2000SG | Click Ratchet |
| 43 | 1313820 | 43-CFT2500 | Crosswind Block |
| 43A | 1191818 | 43A-3000SG | Crosswind Block Plate |
| 43B | 1191826 | 43B-3000SG | Crosswind Block Plate Screw |
| 44 | 1191843 | 44-3000SG | Crosswind Block Screw |
| 45 | 1514570 | 45-FRCIII2000 | Housing Cover Assy |
| 46 | 1191901 | 46-3000SG | Housing Cover Screw (3 req) |
| 46B | 1191907 | 46B-3000SG | Housing Cover Washer (3 req) |
| 47 | 1514307 | 47-FRCIII2000 | Spool Assembly |
| 48 | 1211604 | 48-3000SG | Click Tongue |
| 48A | 1214226 | 48A-3000SG | Click Tongue Washer |
| 48B | 1214189 | 48B-3000SG | Spool Click Screw |
| 49 | 1211605 | 49-3000SG | Click Tongue Spring |
| 51 | 1313823 | 51-CFT2500 | Drag Retaining Ring |
| 52 | 1514308 | 52-FRCIII2000 | Drag Knob Assembly |
| 56 | 1313825 | 56-CFT2500 | Drag Washer (2 req) |
| 57 | 1192041 | 57-2000SG | Keyed Washer (2 req) |
| 60 | 1192059 | 60-2000SG | Thrust Washer |
| 95B | 1308081 | 95B-CFT3000 | Rotor Locking Plate |
| 97 | 1192189 | 97-2000SG | Clutch Spring |
| 98C | 1192211 | 98C-2000SG | Clutch/Sleeve Assembly |
| 98W | 1192229 | 98W-3000SG | Clutch Washer |
| 98W | 1204004 | 98W-3000PUR | Clutch Washer |
| 132 | 1313826 | 132-CFT2500 | Roller Washer |
| 132A | 1192301 | 132A-2000SG | Line Roller Washer (2 req) |
| 226 | 1313827 | 226-CFT2500 | Rear Cover |
| 226A | 1192473 | 226A-3000SG | Rear Cover Screw |
| 231 | 1313837 | 231-CFT2000 | Crosswind Gear |
| 233 | 1514304 | 233-FRCIII1000 | Bearing Cover Assy |