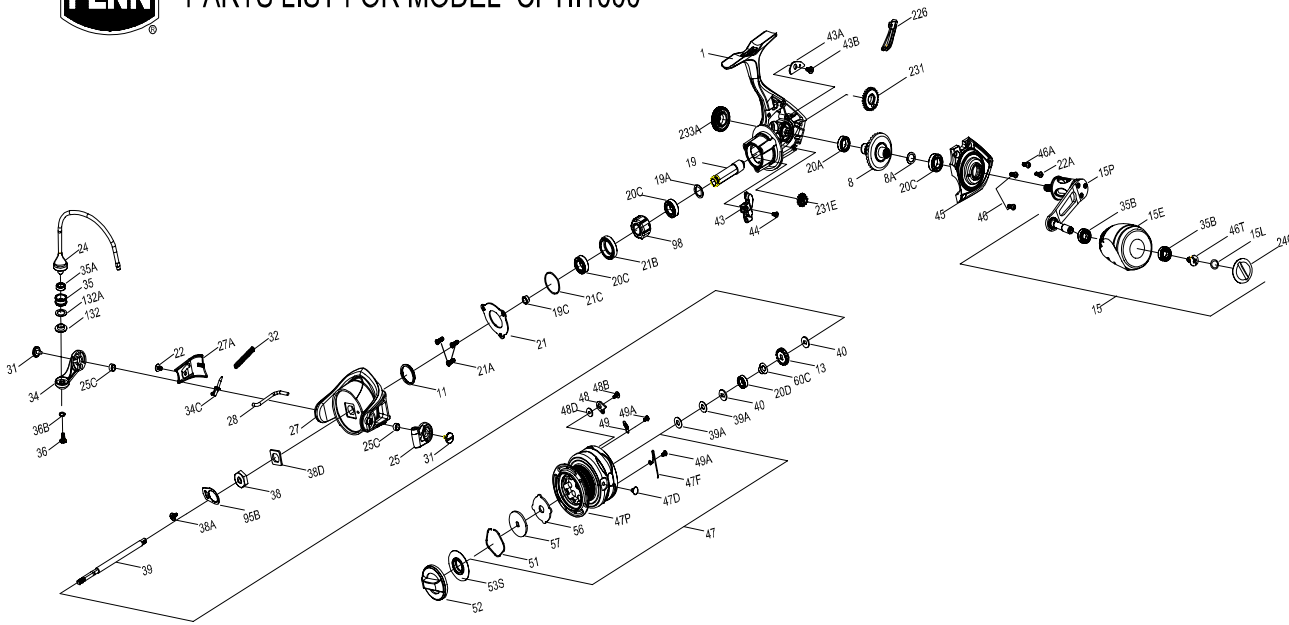




PARTS LIST FOR MODEL CFTII1000



KEY NO.	PART NO.	PENN STYLE NO.	DESCRIPTION
24C	1417806	24C-CLA3000	Handle Knob Cap
25	1385611	25-CLA2000	Bail Holder
25C	1188261	25C-CLA2000	Bail Holder Bushing
27	1447823	27-CFTII1000	Rotor
27A	1447824	27A-CFTII1000	Rotor Cover
28	1447825	28-CFTII1000	Rotor Trip Lever
31	1385619	31-CLA2000	Bail Arm Screw
32	1363787	32-CLA2000	Compressing Spring
34	1385620	34-CLA2000	Bail Arm
34C	1385621	34C-CLA2000	Bail Arm Lever
35	1447849	35-CFTII2000	Line Roller
35A	1418992	35A-SLA3500	Line Roller Bushing
35B	1418393	35B-CLA3000	Ball Bearing
36	1389419	36-CLA2000	Line Roller Screw
36B	1419265	36B-CLA2000	Bail Arm Screw Washer
38	1447826	38-CFTII1000	Nut
38A	1126258	38A-CFTII1000	Rotor Nut Lock Plate Screw
38D	1447827	38D-CFTII1000	Rotor Washer
39	1447828	39-CFTII1000	Main Shaft
39A	1385627	39A-CLA2000	Spool Adjust Washer
40	1252700	40-CLA2000	Main Shaft Washer
43	1447829	43-CFTII1000	Oscillation Slider
43A	1385630	43A-CLA2000	Slider Retainer Plate
43B	1277070	43B-SSV5500	Oscillation Slider Guide Screw
44	1385564	44-CLA3000	Main Shaft Screw
45	1447831	45-CFTII1000	Body Cover
46	1447884	46-CFTII3000	Screw
46A	1447853	46-CFTII2000	Screw
46T	1341500	3-SSV7500LC	Screw
47	1447832	47-CFTII1000	Spool Assembly
47D	1276953	47D-SSV3500	Line Hook
47F	1385637	47F-CLA2000	Line Clip Retainer
47P	1447833	47P-CFTII1000	Spool
48	1385578	48-CLA3000	Spool Click Plate
48B	1385581	48B-CLA3000	Spool Clicker Spring Screw
48D	1385579	48D-CLA3000	Spool Clicker Spacer Ring
49	1259579	49-7000AF	Pulling Spring
49A	1294638	49A-CLA2000	Spool Clicker Spring Screw
51	1276959	51-SSV3500	Drag Washer Retainer
52	1447856	52-CFTII2000	Drag Knob Assembly
53S	1447857	53S-CFTII2000	Drag Knob Seal
56	1385645	56-CLA2000	Drag Friction Washer
57	1385646	57-CLA2000	Keyed Drag Washer
60C	1385603	60C-CLA2000	Spool Support Sleeve
95B	1447834	95B- CFTII1000	Rotor Nut Locking Plate
98	1277190	98-SSV7500	One Way Clutch Bearing Assembly
132	1385648	132-CLA2000	Line Roller Collar
132A	1385649	132A-CLA2000	Line Roller Washer
226	1447836	226-CFTII1000	Rear Cover
231	1447837	231-CFTII1000	Oscillation Gear
231E	1385654	231E-CLA2000	Slow Oscillation Gear
233A	1447838	233A-CFTII1000	Handle Cap

KEY NO.	PART NO.	PENN STYLE NO.	DESCRIPTION
1	1447813	1-CFTII1000	Body Assembly
8	1447814	8-CFTII1000	Drive Gear
8A	1114764	8A-CFTII1000	Washer
11	1447815	11-CFTII1000	Rotor Seal
13	1447840	13-CFTII2000	Click Gear
15	1447816	15-CFTII1000	Handle Assembly
15E	1447842	15E-CFTII2000	Handle Knob
15L	1417804	15L-CLA2000	Handle Knob Seal
15P	1447817	15P-CFTII1000	Sub-Handle Assembly
19	1496530	19-CFTII1000	Pinion Gear
19A	1447819	19A-CFTII1000	Pinion Gear Washer
19C	1447820	19C-CFTII1000	Pinion Gear Bushing
20A	1385533	20D-CLA3000	Main Shaft Sealed Ball Bearing
20C	1385532	20C-CLA3000	Sealed Ball Bearing
20D	1385604	20D-CLA2000	Sealed Ball Bearing
21	1447821	21-CFTII1000	Ball Bearing Retainer
21A	1385607	21A-CLA2000	Ball Bearing Retainer Screw
21B	1447845	21B-CFTII2000	Bushing
21C	1385605	21C-CLA2000	O Ring
22	1092845	22-CLA2000	Rotor Cover Screw
22A	1125961	22A-CFTII1000	Screw
24	1447822	24-CFTII1000	Bail Assembly

407-CFTII1000 Rev.01 05-04-18
1422247--CFTII1000