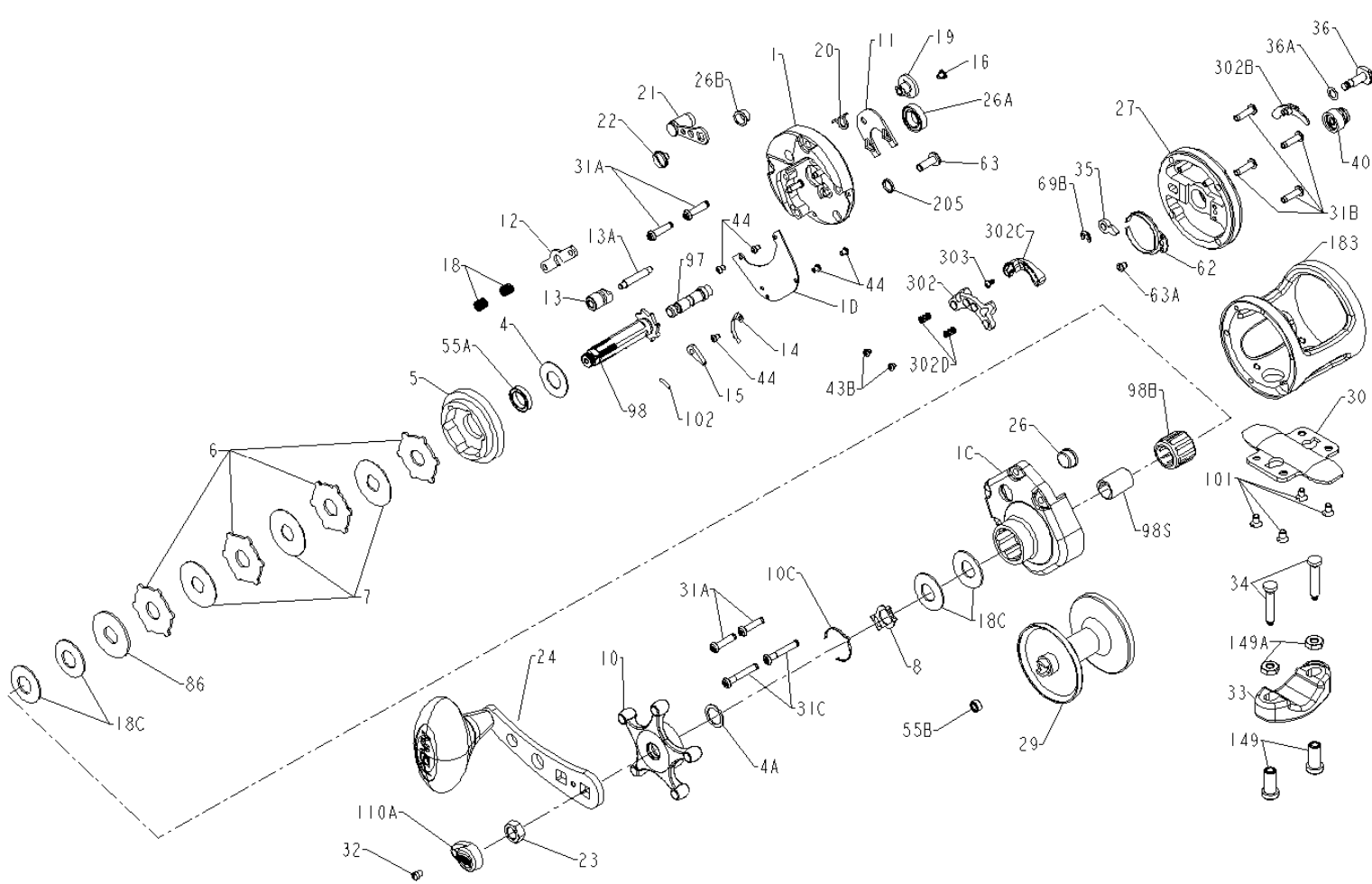




PARTS LIST FOR MODEL TRQ100



| KEY NO. | 100T PART NO. | DESCRIPTION |
|---------|---------------|------------------------------|
| 1 | 001 100T | Right Side Plate |
| 1C | 001C100T | Right Side Cover Assembly |
| 1D | 001D100T | Backing Plate |
| 4 | 004 060 | Graphite Washer |
| 4A | 004 300T | Graphite Washer |
| 5 | 005 100T | Main Gear |
| 6 | 006 525MAG | Drag Washer (4 req) |
| 7 | 007 100T | Metal Drag Washer (3 req) |
| 8 | 008 113HN | Spring Retainer |
| 10 | 010 300T | Drag Star |
| 10C | 010C113HN | Detent Spring |
| 11 | 011 100T | Eccentric Jack |
| 12 | 012 300T | Pinion Yoke |
| 13 | 013 100T | Pinion |
| 13A | 013A113HN | Pinion Pin |
| 14 | 014 300T | Dog Spring |
| 15 | 015 200T | Dog, Anti-reverse |
| 16 | 016 200T | Eccentric Jack Screw |
| 18 | 018 060 | Clutch Spring (2 req) |
| 18C | 018 505 | Tension Washer (4 req) |
| 19 | 019 200T | Eccentric |
| 20 | 020 321LH | Eccentric Spring |
| 21 | 021 200T | Eccentric Lever Assembly |
| 22 | 022 060CH | Screw, Sems Type (Ecc Lever) |
| 23 | 023 555 | Handle Nut |
| 24 | 024 200T | Handle Assembly |
| 26 | 026 113HN | Bearing Cup Assembly |
| 26A | 026A2.5FR | Ball Bearing |
| 26B | 026 200T | Eccentric Bushing |
| 27 | 027 100T | Left Side Plate Assembly |
| 29 | 029L100T | Spool Assembly |
| 30 | 030 016VS | Stand |
| 31A | 031TA200T | Screw R.S. (4 req) |
| 31B | 031TB300T | Screw L.S. (4 req) |
| 31C | 031TC300T | Screw R.S. (2 req) |
| 32 | 039 010 | Screw |
| 33 | 033 113 | Rod Clamp |
| 34 | 034 016VS | Rod Clamp Screw (2 req) |
| 35 | 035 155 | Click Tongue |
| 36 | 036 300T | Click Button |
| 36A | 036A300T | Washer, Click Button |
| 40 | 040 300T | Bearing Cup Assembly, L.S. |
| 43B | 043B965 | Magnet Housing Screw (2 req) |
| 44 | 044 300T | Screw (5 req) |
| 55A | 055 113HN | Ball Bearing, (Main Gear) |
| 55B | 055 910 | Ball Bearing (Spool Asm) |
| 62 | 062 209 | Click Spring |
| 63 | 063 030T | Screw, (Gear Stud) |
| 63A | 063 209 | Screw, (Click Spring) |
| 69B | 069B600 | Retaining Ring |
| 86 | 086 049H | Washer, Keyed |
| 97 | 097 300T | Bridge, (Gear) Stud |
| 98 | 098 300T | Gear Sleeve |
| 98B | 098B525 | Clutch Bearing |
| 98S | 098S525 | Clutch Bearing Sleeve |
| 101 | 101 080ST | Screw, (Stand), (4 req) |
| 102 | 102 060 | Pin, Gear Sleeve |
| 110A | 110A555 | Handle Nut Cap |
| 149 | 149 045 | Rod Clamp Nut (2 req) |
| 149A | 149 200 | Hex Nut (2 req) |
| 183 | 183 100T | Frame |
| 183 | 183 100TE | Frame (for European models) |
| 205 | 205 300T | Washer, Gear Stud |
| 302 | 302 525MAG | Magnet Housing |
| 302B | 302B525MAG | Magnet Control Button |
| 302C | 302C525MAG | Magnet Ramp |
| 302D | 302D525MAG | Magnet Spring (2 req.) |
| 303 | 303 525MAG | Magnet Button Screw |