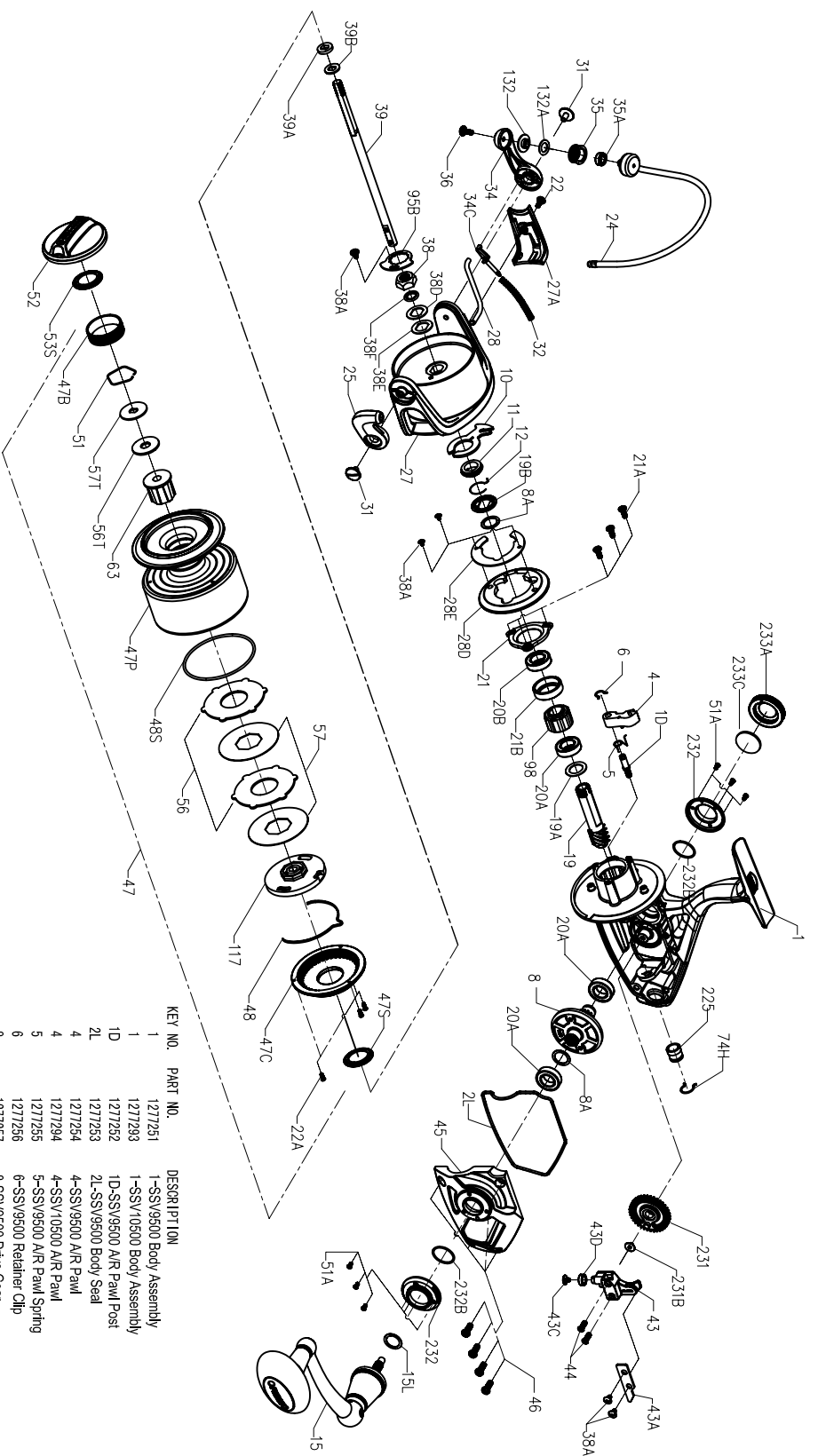




PARTS LIST FOR MODEL SSV9500/SSV10500



407-SSV9500/10500 Rev6 10-01-14
1259881/1259882

KEY NO.	PART NO.	DESCRIPTION	KEY NO.	PART NO.	DESCRIPTION
27	1277285	27-SSV9500 Rotor	27	1277285	27-SSV9500 Rotor
27A	1277286	27A-SSV10500 Rotor Cover	27A	1277286	27A-SSV10500 Rotor Cover
28	1277287	28-SSV9500 Ball Trip Lever	28	1277287	28-SSV9500 Ball Trip Lever
28D	1277288	28D-SSV9500 Rotor Brake	28D	1277288	28D-SSV9500 Rotor Brake
28E	1277289	28E-SSV10500 Rotor Brake	28E	1277289	28E-SSV10500 Rotor Brake
28E	1294661	28E-SSV9500 Rotor Brake Cover	28E	1294662	28E-SSV10500 Rotor Brake Cover
31	1277055	31-SSV6500 Ball Arm Screw (2req)	31	1277055	31-SSV6500 Ball Arm Screw (2req)
32	1277210	32-SSV9500 Ball Spring	32	1277210	32-SSV9500 Ball Spring
34	1277163	34-SSV7500 Ball Arm	34	1277163	34-SSV7500 Ball Arm
34C	1277164	34C-SSV7500 Pinor Arm	34C	1277164	34C-SSV7500 Pinor Arm
35	1277165	35-SSV7500 Line Roller	35	1277165	35-SSV7500 Line Roller
35A	1277060	35A-SSV6500 Line Roller Ball Bearing	35A	1277060	35A-SSV6500 Line Roller Ball Bearing
36	1277166	36-SSV7500 Line Roller Screw	36	1277166	36-SSV7500 Line Roller Screw
38	1309004	38-SSV9500 Rotor Nut	38	1309004	38-SSV9500 Rotor Nut
38A	1277063	38A-SSV6500 Rotor Nut Lock Plate Screw(5req)	38A	1277063	38A-SSV6500 Rotor Nut Lock Plate Screw(5req)
38D	1277168	38D-SSV7500 Rotor Washer	38D	1277168	38D-SSV7500 Rotor Washer
38E	1309005	38E-SSV9500 Pinion Washer	38E	1309005	38E-SSV9500 Pinion Washer
38F	1309006	38F-SSV9500 Mainshaft Seal	38F	1309006	38F-SSV9500 Mainshaft Seal
39	1277271	39-SSV9500 Main Shaft	39	1277271	39-SSV9500 Main Shaft
39A	1288190	39A-SSV9500 Spool Adjust Washer	39A	1288190	39A-SSV9500 Spool Adjust Washer
39B	1288191	39B-SSV9500 Mainshaft Washer	39B	1288191	39B-SSV9500 Mainshaft Washer
43	1277212	43-SSV9500 Oscillation Slider	43	1277212	43-SSV9500 Oscillation Slider
43A	1277273	43A-SSV9500 Oscillation Slider Guide	43A	1277273	43A-SSV9500 Oscillation Slider Guide
43C	1277071	43C-SSV5500 Oscillation Slider Bushing Screw	43C	1277071	43C-SSV5500 Oscillation Slider Bushing Screw
43D	1279457	43D-SSV3500 Oscillation Slider Bushing	43D	1279457	43D-SSV3500 Oscillation Slider Bushing
44	1277174	44-SSV7500 Main Shaft Screw (2req)	44	1277174	44-SSV7500 Main Shaft Screw (2req)
45	1277214	45-SSV9500 Body Cover	45	1277214	45-SSV9500 Body Cover
45	1277298	45-SSV10500 Body Cover	45	1277298	45-SSV10500 Body Cover
46	1277215	46-SSV9500 Body Cover Screw (4req)	46	1277215	46-SSV9500 Body Cover Screw (4req)
47	1277216	47-SSV9500 Spool Assembly	47	1277216	47-SSV9500 Spool Assembly
47	1277299	47-SSV10500 Spool Assembly	47	1277299	47-SSV10500 Spool Assembly
47B	1277208	47B-SSV8500 Spool Band	47B	1277208	47B-SSV8500 Spool Band
47C	1277217	47C-SSV9500 Drag Cover	47C	1277217	47C-SSV9500 Drag Cover
47P	1277219	47P-SSV9500 Spool	47P	1277219	47P-SSV9500 Spool
47S	1277301	47S-SSV10500 Spool	47S	1277301	47S-SSV10500 Spool
48	1277281	48-SSV9500 Drag Drive Plate Seal	48	1277281	48-SSV9500 Drag Drive Plate Seal
48S	1277085	48S-SSV9500 Spool Clicker	48S	1277085	48S-SSV9500 Spool Clicker
51	1277885	51A-SSV9500 Drag Cover Seal	51	1277885	51A-SSV9500 Drag Cover Seal
51A	1277183	51A-SSV7500 Drag Washer Retainer	51A	1277183	51A-SSV7500 Drag Washer Retainer
52	1277302	52-SSV10500 Drag Knob Assembly	52	1277302	52-SSV10500 Drag Knob Assembly
53S	1293253	53S-SSV7500 Drag Knob Seal	53S	1293253	53S-SSV7500 Drag Knob Seal
56	1277284	56-SSV9500 Drag Friction Washer (2req)	56	1277284	56-SSV9500 Drag Friction Washer (2req)
56T	1277089	56T-SSV5500 Drag Friction Washer	56T	1277089	56T-SSV5500 Drag Friction Washer
57	1277285	57-SSV9500 Keypad Drag Washer (2req)	57	1277285	57-SSV9500 Keypad Drag Washer (2req)
57T	1277187	57T-SSV7500 Keypad Drag Washer	57T	1277187	57T-SSV7500 Keypad Drag Washer
63	1277286	63-SSV9500 Spool Bushing	63	1277286	63-SSV9500 Spool Bushing
74H	1277287	74H-SSV9500 Rear Bushing E-C-Clip	74H	1277287	74H-SSV9500 Rear Bushing E-C-Clip
95B	1277189	95B-SSV7500 Rotor Nut Locking Plate	95B	1277189	95B-SSV7500 Rotor Nut Locking Plate
98	1277190	98-SSV7500 Clutch / Sleeve Assembly	98	1277190	98-SSV7500 Clutch / Sleeve Assembly
117	1277288	117-SSV9500 Drag Drive Plate	117	1277288	117-SSV9500 Drag Drive Plate
132	1277192	132-SSV7500 Line Roller Collar	132	1277192	132-SSV7500 Line Roller Collar
132A	1277097	132A-SSV6500 Line Roller Washer	132A	1277097	132A-SSV6500 Line Roller Washer
225	1277289	225-SSV9500 Rear Bushing	225	1277289	225-SSV9500 Rear Bushing
231	1277290	231-SSV9500 Oscillation Gear	231	1277290	231-SSV9500 Oscillation Gear
231B	1277100	231B-SSV6500 Oscillation Gear Screw	231B	1277100	231B-SSV6500 Oscillation Gear Screw
232	1277292	232-SSV6500 Bearing Retainer (2req)	232	1277292	232-SSV6500 Bearing Retainer (2req)
232	1277303	232-SSV10500 Bearing Retainer (2req)	232	1277303	232-SSV10500 Bearing Retainer (2req)
232B	1302583	232B-SSV7500 Bearing Retainer 0 - Ring (2 req.)	232B	1302583	232B-SSV7500 Bearing Retainer 0 - Ring (2 req.)
233A	1277196	233A-SSV7500 Handle Cap	233A	1277196	233A-SSV7500 Handle Cap
233C	1277197	233C-SSV7500 Handle Cap Washer	233C	1277197	233C-SSV7500 Handle Cap Washer