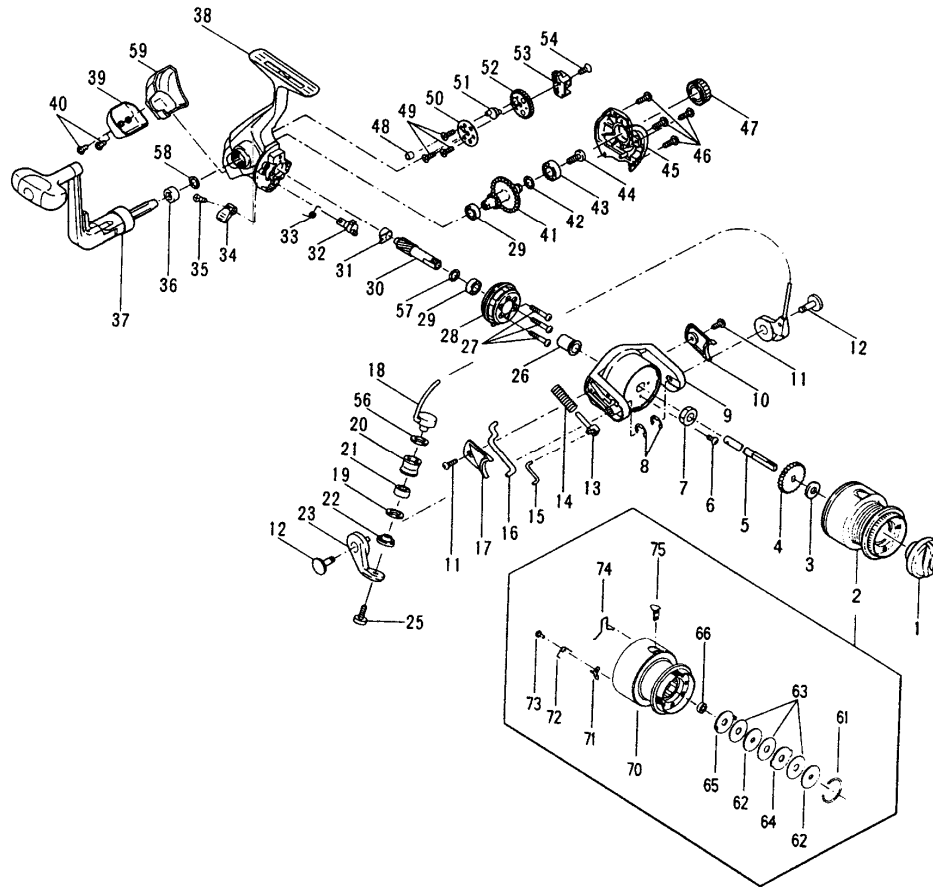




MODEL PRION 2400



NOT ALL PARTS ARE AVAILABLE

KEY NO.	PART NO.	DESCRIPTION
1	052 1800	Drag Knob Asm.
2	047 2400	Spool Assembly
3	060 1500	Thrust Washer
4	040B1800	Click Ratchet
5	039 1800	Spool Shaft
6	038A900	Rotor Nut Lock
7	038 1000	Rotor Nut
8	037 900	E-Ring (2)
9	027 2400	Rotor
10	227 1800	Rotor Cover 'B'
11	050 1000	Cover Screw (2)
12	031A1800	Lever Shaft (2)
13	034B1000	Pivot Shaft
14	034C1800	Pivot Spring

PARTS LIST FOR MODEL 2400

KEY NO.	PART NO.	DESCRIPTION
15	034A1500	Pivot Arm
16	034D2400	Pivot Arm Kick Lever
17	027A2400	Rotor Cover 'A'
18	024 2400	Bail Wire Assembly
19	132 900	Washer
20	035 900	Line Roller
21	035A900	Ball Bearing
22	035B900	Collar
23	034 1800	Bail Arm
25	036 900	Line Roller Screw
26	019A900	Spacer
27	020A900	Screw (3)
28	020 1800	One Way Clutch
29	020B900	Ball Bearing
30	019 1800	Pinion Gear
31	019B1800	Rear Pinion Bushing
32	028 1800	Anti-Reverse Lever Cam
33	028B1800	Anti-Reverse Lever Spring
34	028A900	Anti-Reverse Lever
35	006F900	Lever Mtg. Screw
36	015A900	Handle Spacer
37	015 1800	Handle Assembly
38	001 1800	Main Body
39	001A1800	Housing Protector
40	001C900	Housing Protector Screws (2)
41	008 1800	Main Gear
42	008A1000	Main Gear Shim
43	020 1000	Ball Bearing
44	009A1000	Handle Retaining Screw
45	002A1800	Side Plate
46	046 1000	Screw (4)
47	233 900	Bearing Cover
48	231A1800	Crosswind Cam Collar
49	231D900	Crosswind Gear Screw (3)
50	231C1800	Crosswind Pressure Plate
51	231B1800	Crosswind Cam
52	231 1800	Crosswind Gear
53	043 1800	Crosswind Block
54	044 900	Crosswind Block Screw
56	008A1500	Upper Roller Washer
57	019C1800	Pinion Thrust Washer
58	015B900	Washer
59	001B1800	Side Cover
61	051C1800	Drag Retainer
62	057 900	Keyed Drag Washer (2)
63	006 900	Drag Washer (3)
64	058 900	Eared Drag Washer
65	058A900	Eared Drag Washer
66	035A900	Spool Ball Bearing
70	048 900	Spool (Only)
71	048C900	Click Tongue
72	048B900	Click Spring
73	047B1800	Click Screw
74	047A900	Line Clip Retainer
75	001 1800	Line Clip
**	051 1800	Drag Cover
**	051A1800	Drag Cover Screw (8)
**	047F2400	Spool Flange

**Not Shown