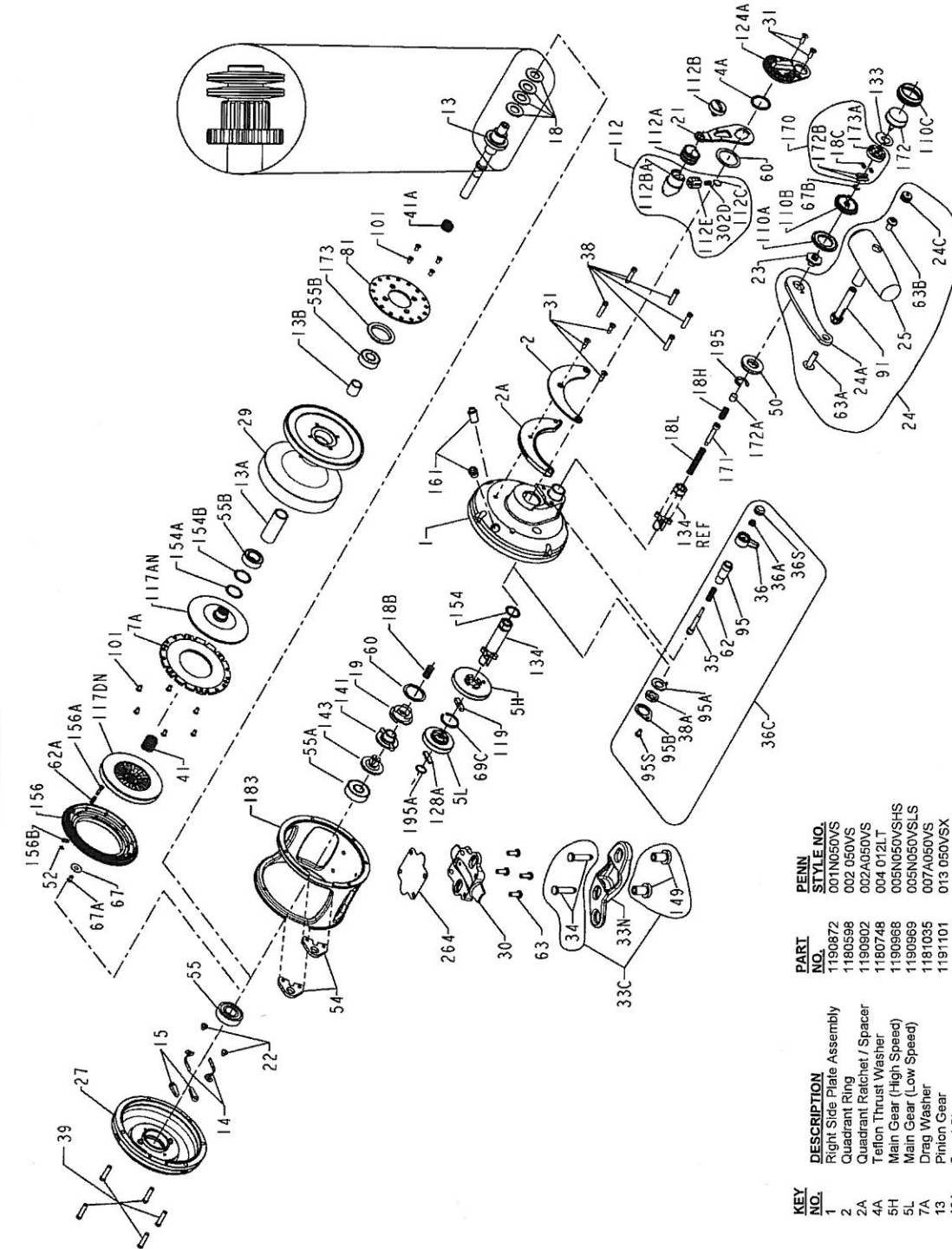




PARTS LIST FOR MODEL 50VSX

REEL NO.1151035



KEY NO.	DESCRIPTION	PART NO.	STYLE NO.	PENN
33C	Rod Clamp Kit	1182770	033C070VS	
33N	Rod Clamp	1191619	033N070	
34	Clamp Screw (2 req.)	1182792	034 070VS	
35	Click Tongue	1191667	035 070VS	
36	Click Lever	1183047	036N050	
36A	Click Lever Nut	1183014	036 700	
36C	Clicker Assembly	1183039	036C050VSW	
36S	Click Button Cap	1183051	036S060ST	
38	Right Side Plate Screw (5 req)	1191724	038 050VSX	
38A	Click Bushing Nut	1183157	038 710	
39	Left Side Plate Screw (5 req)	1191740	039 050VSX	
41A	Drive Plate Bearing Spring	1183325	041 050	
50	Drag Spring	1183328	041 070	
52	Gear Stud Lock Shield	1191966	050 050VS	
54	Cover Lock Retaining Ring	1183840	052 810	
55	Harness Lug (2 req.)	1183854	054 060T	
55A	Left Side Ball Bearing	1183878	055 080	
55B	Right Side Ball Bearing	1183876	055 080	
60	Spool Ball Bearing (2 req.)	1183879	055 080ST	
62	Drag Thrust Washer (2 req.)	1183963	060 050	
62A	Click Spring	1184022	062 050	
63	Drag Cover Lock Spring	1184029	062 545	
63A	Stand Screw (4 req.)	1184045	063 030T	
63B	Handle Rivet Screw	1184056	063A050	
67	Handle Knob Screw	1184046	063 050	
67A	Pinion Retaining Washer	1184106	067 070	
67B	Pinion Retaining Screw	1184111	067A070	
69C	Shifter Retaining Ring	1184105	067 030VS	
81	H/L Gear Retaining Ring	1184133	069C245	
81	Ratchet Disk Plate	1184204	081 050	
81	Handle Rivet	1184304	081N050	
95	Click Tongue Bushing	1184307	095 070	
95A	Click Bushing Washer	1184311	095A050	
95B	Click Retaining Plate	1184312	095B070	
95S	Click Retaining Plate Screw	1181953	023 750	
101	Flat Head Screw (10 req)	1184403	101 030	
110A	Handle Screw Locking Ring	1184440	110A030VS	
110B	Shifter Base	1184446	110B030VS	
110C	Shift Button Retaining Ring	1184447	110C030VS	
112	Drag Lever Knob Assembly	1184456	112 030VS	
112A	Drag Knob Sleeve	1184460	112A030VS	
112B	Drag Knob Screw	1184464	112B070	
112BA	Drag Lever Knob	1192711	112B030VS	
112C	Drag Click Plate	1192712	112C030VS	
112E	Lever Click Plate Housing	1192713	112E030VS	
117AN	Inner Drive Plate Assembly	1184496	117AN070	
117DN	Drive Plate Assembly	1184503	117DN070VS	
119	Hi/Low Gear Shift Plate	1184515	119 024KG	
124A	Bridge Cover Preset Asm	1184549	124L050VS	
128A	Low Gear Drive Plate	1184566	128A024KG	
133	Shifter Retaining Plate	1184602	133 030VS	
134	Gear Stud	1192325	134N050VS	
141	Cam Follower	1184665	141 050VS	
143	Preset Screw	1184673	143 050VS	
149	Rod Clamp Nut (2 req.)	1184703	149 070	
154	Shim- Spool Stud	1184719	154 080	
154A	Shim- Spool (as required)	1184719	154 080-5	
156	Shim- Spool (as required)	1253919	156N050VS	
158	Drag Cover Assembly	1184739	158B030VS	
158B	Drag Cover Lock Pin	1184756	158B030VS	
161	Drag Cover Lock Plate	1184756	161C030VSW	
170	Locating Pin Asm (2 req)	1182369	170 030VS	
171	Shifter Catch Holder Asm	1184809	171 030VS	
172	Shifter Plunger (Screw)	1184813	172 030VS	
172A	Shift Button, Metal	1226062	172N030VS	
172B	Shifter Spacer	1184827	172A050VS	
173	Shifter Catch Plate(2 req)	1184838	173 030VS	
173A	Spool Bushing	1184838	173A030VS	
173B	Shifter Catch Holder	1184848	173B030VS	
183	Tube Frame	1192733	183 050VSX	
195	Retaining Ring	1184955	195 040	
195A	Spiral Retaining Ring	1184954	195 024KG	
264	Stand Gasket	1192542	264 030VS	
302D	Drag Click Plate Spring	1185255	302D525MAG	

KEY NO.	DESCRIPTION	PART NO.	STYLE NO.	PENN
156B	Handle Screw	1181933	023 030VS	
24	Handle Assembly	1181972	024 030VS	
24A	Handle Blank	1205614	024 030VS-1	
24C	Handle Knob Cap	1191334	024C050M	
25	Handle Knob Assembly	1206009	025S050M	
27	Left Side Plate Assembly	1191472	027N050VSX	
29	Spool Assembly	1191532	030 050VSX	
30	Stand	1191552	030 050VSX	
31	Drag Lever/Quad Screw (5 req)	1182700	031T070	