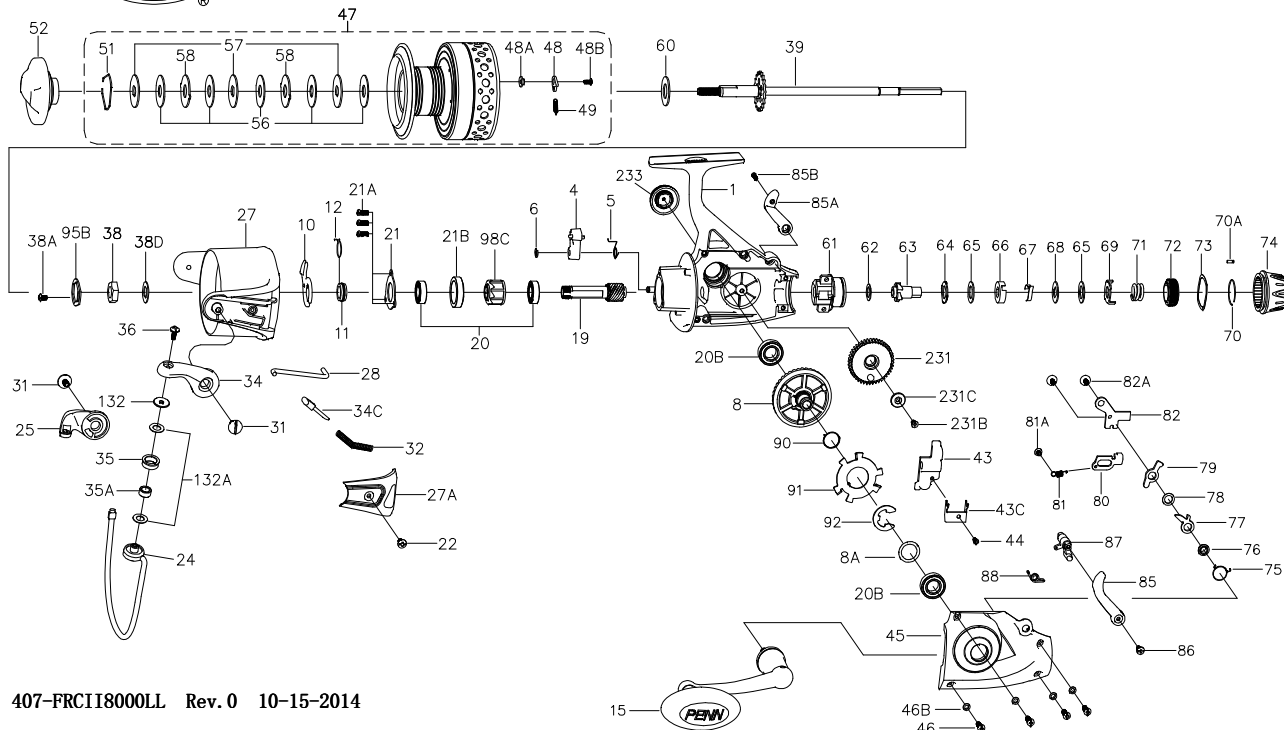




PARTS LIST FOR MODEL FRCII8000LL



407-FRCII8000LL Rev.0 10-15-2014

1364052

KEY NO.	PART NO.	DESCRIPTION
1	1371421	1-FRCII8000LL Housing Assembly
4	1190939	4-7000SG A/R Dog
5	1190966	5-5000SG Dog Spring
6	1190979	6-5000SG Retaining Clip
8	1371422	8-FRCII8000LL Main Gear
8A	1191031	8A-7000SG Shim
10	1313864	10-CFT8000 A/R Holder
11	1191087	11-7000SG Bushing
12	1313865	12-CFT8000 A/R Bushing Spring
15	1365753	15-FRCII8000 Handle Assembly
19	1313868	19-CFT8000 Pinion Gear
20	1204012	20-5000PUR Ball Bearing (2 req)
20B	1204068	20B-7000PUR Ball Bearing (2 req)
21	1192636	21-5000SG Bearing Retainer
21A	1192645	21A-5000SG Bearing Retainer Screw (3 req)
21B	1324209	21B-BTLII5000 Collar
22	1204018	22-6000PUR Bail Pivot Cover Screw

KEY NO.	PART NO.	DESCRIPTION
24	1365754	24-FRCII8000 Bail Wire
25	1313870	25-CFT8000 Bail Holder
27	1365755	27-FRCII8000 Rotor
27A	1365756	27A-FRCII8000 Bail Pivot Cover
28	1365757	28-FRCII8000 Trip Lever
31	1365758	31-FRCII8000 Bail Arm Screw (2 req)
32	1313874	32-CFT8000 Bail Spring
34	1313875	34-CFT8000 Bail Arm
34C	1191656	34C-7000SG Pivot Arm
35	1313876	35-CFT8000 Line Roller
35A	1313877	35A-CFT8000 Line Roller Bushing
36	1191704	36-7000SG Bail Stud Screw
38	1191731	38-7000SG Rotor Nut
38A	1371423	38A-FRCII8000LL Rotor Locking Plate Screw
38D	1308104	38D-CFT5000 Rotor Nut Washer
39	1371424	39-FRCII8000LL Main Shaft Assembly
43	1371425	43-FRCII8000LL Crosswind Block
43C	1371426	43C-FRCII8000LL Main Shaft Holder
44	1371394	44-FRCII6000LL Crosswind Block Screw
45	1371427	45-FRCII8000LL Housing Cover Assembly
46	1371701	46-FRCII6000LL Housing Cover Screw (4 req)
46B	1191908	46B-5000SG Housing Cover Washer (4 req)

KEY NO.	PART NO.	DESCRIPTION
47	1371438	47-FRCII8000LL Spool Assembly
48	1211625	48-5000SG Click Tongue
48A	1211626	48A-5000SG Click Tongue Washer
48B	1211612	48B-5000SG Spool Click Screw
49	1211627	49-5000SG Click Tongue Spring
51	1308112	51-CFT5000 Drag Retaining Ring
52	1365761	52-FRCII8000 Drag Knob Assembly
56	1192038	56-7000SG Drag Washer (5 req)
57	1211646	57-7000BTL Keyed Washer (3 req)
58	1192055	58-7000SG Eared Washer (2 req)
60	1211629	60-5000BTL Thrust Washer
61	1371396	61-FRCII6000LL Rear Drag Bracket
62	1371397	62-FRCII6000LL Washer
63	1371398	63-FRCII6000LL Ratchet
64	1371399	64-FRCII6000LL Eared Washer
65	1371400	65-FRCII6000LL Friction Washer (2 req)
66	1371401	66-FRCII6000LL Click Spring Sleeve
67	1371402	67-FRCII6000LL Click Spring
68	1371403	68-FRCII6000LL Keyed Drag Washer
69	1371404	69-FRCII6000LL Eared Washer
70	1371405	70-FRCII6000LL Retaining Ring
70A	1371406	70A-FRCII6000LL Click Pin
71	1371407	71-FRCII6000LL Rear Drag Spring
72	1371408	72-FRCII6000LL Drag Sleeve
73	1371409	73-FRCII6000LL Spring Washer
74	1371428	74-FRCII8000LL Rear Drag
75	1371372	75-FRCII4000LL Release Pawl Spring
76	1371411	76-FRCII6000LL Release Pawl Stud
77	1371429	77-FRCII8000LL Release Pawl
78	1371413	78-FRCII6000LL Washer
79	1371414	79-FRCII6000LL Return pawl
80	1371415	80-FRCII6000LL N-R Pawl
81	1371376	81-FRCII4000LL N-R Pawl Spring
81A	1371377	81A-FRCII4000LL Screw
82	1371430	82-FRCII8000LL Retaining Plate
82A	1371417	82A-FRCII6000LL Screw (2 req)
85	1371431	85-FRCII8000LL Left Lever
85A	1371432	85A-FRCII8000LL Right Lever
85B	1371381	85B-FRCII4000LL Screw
86	1371382	86-FRCII4000LL Screw
87	1371433	87-FRCII8000LL Lever Bar
88	1371418	88-FRCII6000LL Lever Spring
90	1371702	90-FRCII8000LL Release Spring
91	1371434	91-FRCII8000LL Release Plate
92	1371435	92-FRCII8000LL Retaining Washer
95B	1308115	95B-CFT5000 Rotor Locking Plate
98C	1313884	98C-CFT8000 Clutch/Sleeve Assembly
132	1192298	132-7000SG Roller Washer
132A	1192302	132A-3000SG Line Roller Washer (2 req)
231	1313886	231-CFT8000 Crosswind Gear
231B	1313887	231B-CFT8000 Screw Crosswind Gear
231C	1313888	231C-CFT8000 Screw Crosswind Sleeve
233	1214209	233-5000FRC Bearing Cover Assembly