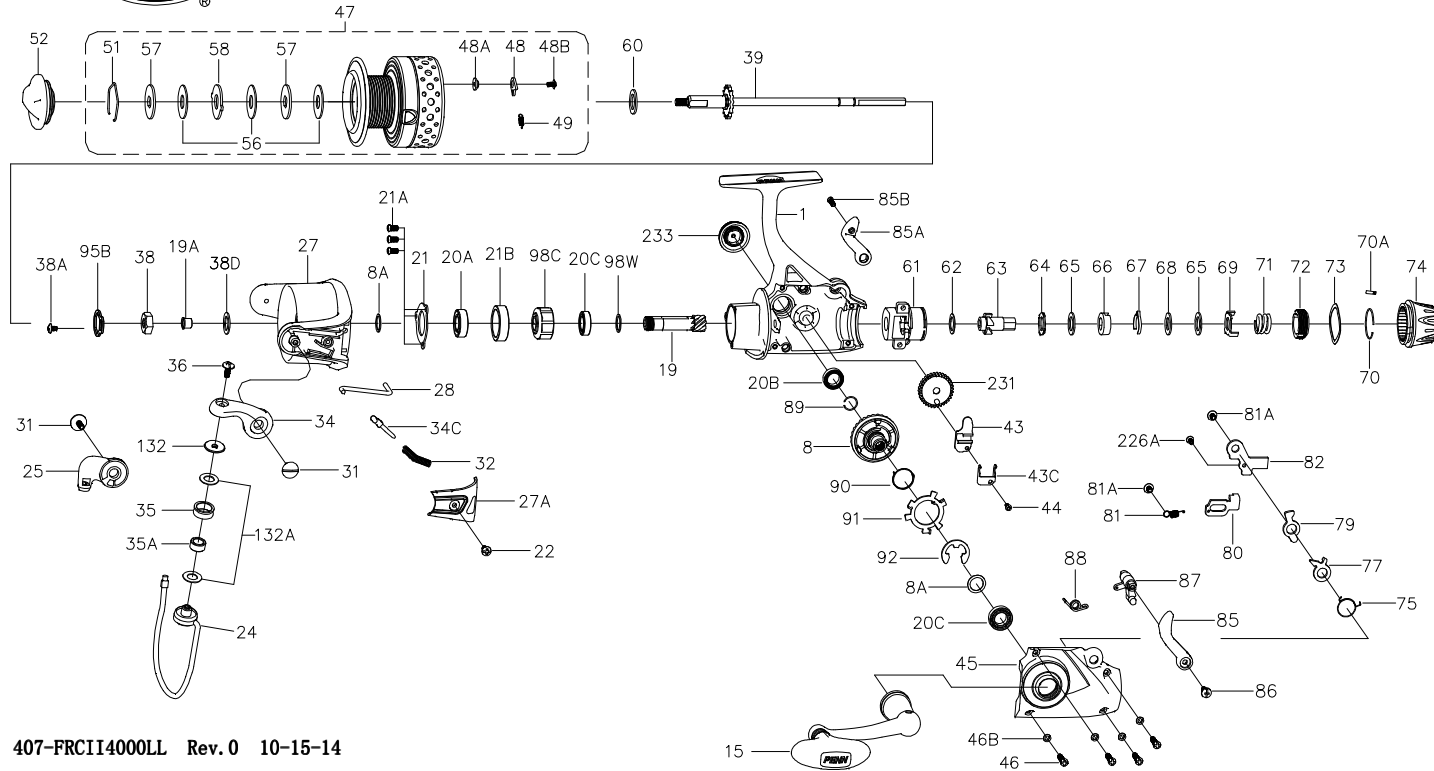




PARTS LIST FOR MODEL FRCII4000LL



407-FRCII4000LL Rev.0 10-15-14

1364048

KEY NO.	PART NO.	DESCRIPTION
1	1371349	1-FRCII4000LL Housing Assembly
8	1371350	8-FRCII4000LL Main Gear
8A	1191028	8A-3000SG Shim (2 req)
15	1365723	15-FRCII4000 Handle Assembly
19	1191231	19-3000SG Pinion Gear
19A	1191252	19A-3000SG Pinion Bushing
20A	1203973	20A-3000PUR Upper Pinion Ball Bearing
20B	1203974	20B-3000PUR Housing Ball Bearing
20C	1203975	20C-3000PUR Ball Bearing (2 req)
21	1308052	21-CFT3000 Bearing Retainer
21A	1192644	21A-3000SG Bearing Retainer Screw (3 req)
21B	1308053	21B-CFT3000 Collar
22	1251743	22-1000FRC Bail Pivot Cover Screw
24	1308055	24-CFT4000 Bail Wire
25	1308056	25-CFT3000 Bail Holder

KEY NO.	PART NO.	DESCRIPTION
27	1371439	27-FRCII4000LL Rotor
27A	1308060	27A-CFT4000 Bail Pivot Cover
28	1308062	28-CFT4000 Trip Lever
31	1308063	31-CFT3000 Bail Arm Screw (2 req)
32	1191586	32-3000SG Bail Spring
34	1308064	34-CFT3000 Bail Arm
34C	1308065	34C-CFT3000 Pivot Arm
35	1308066	35-CFT3000 Line Roller
35A	1308067	35A-CFT3000 Line Roller Bushing
36	1191699	36-3000SG Bail Stud Screw
38	1191728	38-3000SG Rotor Nut
38A	1308069	38A-CFT3000 Rotor Locking Plate Screw
38D	1308070	38D-CFT3000 Rotor Nut Washer
39	1371351	39-FRCII4000LL Main Shaft Assembly
43	1371352	43-FRCII4000LL Crosswind Block
43C	1371353	43C-FRCII4000LL Main Shaft Holder
44	1371354	44-FRCII4000LL Crosswind Block Screw
45	1371355	45-FRCII4000LL Housing Cover Assembly
46	1371356	46-FRCII4000LL Housing Cover Screw (4 req)
46B	1191907	46B-3000SG Housing Cover Washer (4 req)

KEY NO.	PART NO.	DESCRIPTION
47	1371436	47-FRCII4000LL Spool Assembly
48	1211604	48-3000SG Click Tongue
48A	1214226	48A-3000SG Click Tongue Washer
48B	1214189	48B-3000SG Spool Click Screw
49	1211605	49-3000SG Click Tongue Spring
51	1308078	51-CFT3000 Drag Retaining Ring
52	1365728	52-FRCII4000 Drag Knob Assembly
56	1192035	56-3000SG Drag Washer (3 req)
57	1192043	57-3000SG Keyed Washer (2 req)
58	1192052	58-3000SG Eared Washer
60	1192060	60-3000SG Thrust Washer
61	1371357	61-FRCII4000LL Rear Drag Bracket
62	1371358	62-FRCII4000LL Washer
63	1371359	63-FRCII4000LL Ratchet
64	1371360	64-FRCII4000LL Eared Washer
65	1371361	65-FRCII4000LL Friction Washer (2 req)
66	1371362	66-FRCII4000LL Click Spring Sleeve
67	1371363	67-FRCII4000LL Click Spring
68	1371364	68-FRCII4000LL Keyed Drag Washer
69	1371365	69-FRCII4000LL Eared Washer
70	1371366	70-FRCII4000LL Retaining Ring
70A	1371367	70A-FRCII4000LL Click Pin
71	1371368	71-FRCII4000LL Rear Drag Spring
72	1371369	72-FRCII4000LL Drag Sleeve
73	1371370	73-FRCII4000LL Spring Washer
74	1371371	74-FRCII4000LL Rear Drag
75	1371372	75-FRCII4000LL Release Pawl Spring
77	1371373	77-FRCII4000LL Release Pawl
79	1371374	79-FRCII4000LL Return pawl
80	1371375	80-FRCII4000LL N-R Pawl
81	1371376	81-FRCII4000LL N-R Pawl Spring
81A	1371377	81A-FRCII4000LL Screw (2 req)
82	1371378	82-FRCII4000LL Retaining Plate
85	1371379	85-FRCII4000LL Left Lever
85A	1371380	85A-FRCII4000LL Right Lever
85B	1371381	85B-FRCII4000LL Screw
86	1371382	86-FRCII4000LL Screw
87	1371383	87-FRCII4000LL Lever Bar
88	1371384	88-FRCII4000LL Lever Spring
89	1371385	89-FRCII4000LL Retaining Ring
90	1371386	90-FRCII4000LL Release Spring
91	1371387	91-FRCII4000LL Release Plate
92	1371388	92-FRCII4000LL Retaining Washer
95B	1308081	95B-CFT3000 Rotor Locking Plate
98C	1308082	98C-CFT3000 Clutch/Sleeve Assembly
98W	1204004	98W-3000PUR Clutch Washer
132	1192296	132-3000SG Roller Washer
132A	1192302	132A-3000SG Line Roller Washer (2 req)
226A	1192473	226A-3000SG Screw
231	1200522	231-4000SG Crosswind Gear
233	1211667	233-3000FRC Bearing Cover Assembly