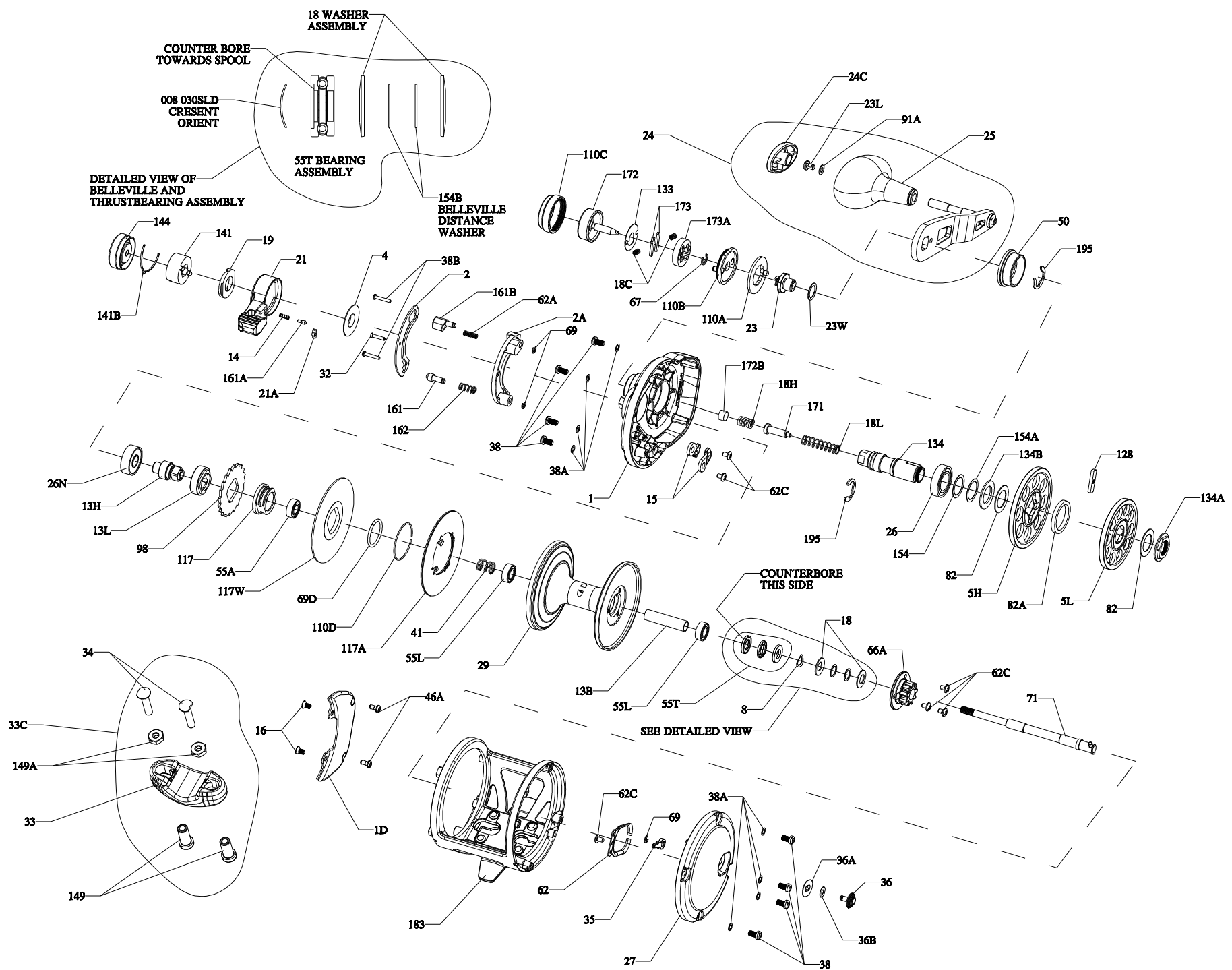




PARTS LIST FOR MODEL
FATHOM 30 LD2 LH
REEL PART NO. 1422245

Key No.	Part No.	PENN Style No.	Description	Key No.	Part No.	PENN Style No.	Description	Key No.	Part No.	PENN Style No.	Description
1	1408157	1-FTH30LD2LH	Left Side Plate Assembly	19	1408165	19-FTH25NLD2LH	Drag Cam	34	1182788	34-45	Screw, Rod Clamp (2 req)
ID	1408158	ID-FTH25NLD2LH	Bridge	21	1265007	21-TRQ30LD2SMK	Lever Drag (Gun Smoke)	35	1188656	35-20	Click Tongue
2	1408159	2-FTH25NLD2LHSMK	Quadrant (Gun Smoke)	21A	1265011	21A-TRQ30LD2	Lever Quadrant Spacer	36	1242796	36-FTHSD12	Click Button
2A	1408160	2A-FTH25NLD2LH	Drag Lever Ratchet	23	1229458	23-12VS	Screw, Handle Nut	36A	1208113	36A-FTH20LW	Click Washer
4	1264978	4-TRQ15LD2	Lever Washer	23L	1191283	23L-750	Screw	36B	1188651	36B-20	Washer
5H	1408162	5-FTH25NLD2LHHS	Main Gear High Speed	23W	1286986	23W-TRQ40NLD2	Handle Nut Washer	38	1309885	38-FTH15LD2	Screw (8 req)
5L	1408161	5-FTH25NLD2LHLS	Main Gear Low Speed	24	1277510	24-TRQ30LD2SMK	Handle Assembly (Gun Smoke / Gold)	38A	1188649	38A-20	Flat Washer (8 req)
8	1257843	8-30SLD	Spring Washer	24C	1191335	24C-66	Cap-Handle Knob	38B	1265055	38-TRQ40NLD2S	Screw (2 req)
13B	1309868	13B-FTH30LD2	Sleeve Spindle	25	1240293	25-TRQ40	Knob Handle Molded	41	1265056	41-TRQ40NLD2	Drag Disengaging Spring
13H	1408164	13-FTH25NLD2LHHS	High Speed Pinion	26	1265023	26-TRQ40NLD2	Ball Bearing	46A	1183585	46A-4300	Cover Plate Screw (2 req)
13L	1408163	13-FTH25NLD2LHLS	Low Speed Pinion	26N	1182145	26N-25	Bearing- Ball	50	1309888	50-FTH30LD2	Shield, Guard
14	1181406	14-535	Spring- Dog	27	1408167	27-FTH30LD2LH	Right Side Plate Assembly	55A	1238912	55A-50SLD	Ball Bearing
15	1229374	15-TRQ40	Dog Asm (2 req)	29	1309878	29-FTH30LD2	Spool (Gun Smoke / Gold)	55L	1286985	55L-20	Ball Bearing (2 req)
16	1188686	16-20	Bridge Screw (2 req)	32	1265049	32-TRQ15LD2S	Screw	55T	1238913	55T-30SLD	Thrust Bearing
18	1265001	18-TRQ40NLD2	Spring Washer (2 req)	33	1290729	33-TRQ	Rod Clamp Aluminum	62	1188664	62-20	Click Spring
18C	1181632	18C-15KG	Spring Shift Button (2 req)	33C	1290731	33C-TRQ40NLD2	Rod Clamp Kit	62A	1236596	62-TRQ40	Spring Click Locator
18H	1265002	18H-30SLD2	Spring					62C	1188654	62C-20	Screw (6 req)
18L	1265003	18L-30SLD2	Spring					66A	1265059	66A-FTHLD	Click Gear



67	1184105	67-30VS	Ring Retaining
69	1188657	69-20	Retainer (3 req)
69D	1265060	69D-FTH15LD	Retaining Ring
71	1309892	71-FTH30LD2	Spindle Complete
82	1265070	82-TRQ40NLD2	Washer Teflon (2 req)
82A	1265071	82A-30SLD2	Washer Teflon
91A	1277514	91A-TRQ40NLD2	Handle Knob Washer
98	1265073	98-FTH40NLD2	Ratchet
110A	1230438	110A-12VS	Ring, Handle Screw Locking
110B	1265074	110B-TRQ40NLD2B	Base Assembled Black
110C	1265075	110C-12VSB	Retainer Shift Button Black
110D	1309895	110D-FTH15LD2	Retaining Ring
117	1309896	117-FTH15LD2	Drive Plate
117A	1309898	117A-FTH25NLD2	Drag Washer (Assembly)
117W	1309901	117W-FTH25NLD2	Drag Washer Metal
128	1265084	128-30SLD2	Shift Key
133	1230583	133-12VS	Plate Retaining
134	1265085	134-30SLD2	Gear Stud
134A	1265086	134A-30SLD2	Nut Gear Stud
134B	1265087	134B-30SLD2	Washer Support Gear Stud
141	1265088	141-TRQ15LD2	Cam Follower
141B	1265089	141B-TRQ15LD2	Pres et Knob Click Spring
144	1265090	144-TRQ15LD2B	Pres et Knob (Black)
149	1184702	149-45	Rod Clamp Nut (2 req)
149A	1184706	149-200	Hex Nut (2 req)
154	1265092	154-TRQ40NLD2	Gear Stud Shim (As Required)
154A	1306668	154A-TRQ40NLD2	Gear Stud Shim (As Required)
154B	1309903	154B-FTH25NLD2	Belle ville Distance Washer (1req)
154B	1309904	154B-FTH40NLD2	Belle ville Distance Washer (1req)
161	1265097	161-TRQ40NLD2	Locating Button
161A	1265098	161A-TRQ15LD2	Lever Click Pin
161B	1265099	161B-TRQ40NLD2	Strike Button
162	1318280	162-TRQ40NLD2	Spring
171	1265101	171-30SLD2	Plunger Gear Shift
172	1265102	172-12VSB	Shift Button Assembly Black
172B	1184831	172B-30VS	Spacer
173	1192384	173-12VS	Catch, Shifter (2 req)
173A	1230664	173A-12VS	Holder Catch
183	1408169	183-FTH30LD2LH	Frame Assembly
195	1184955	195-40	Retaining Ring (2 req)