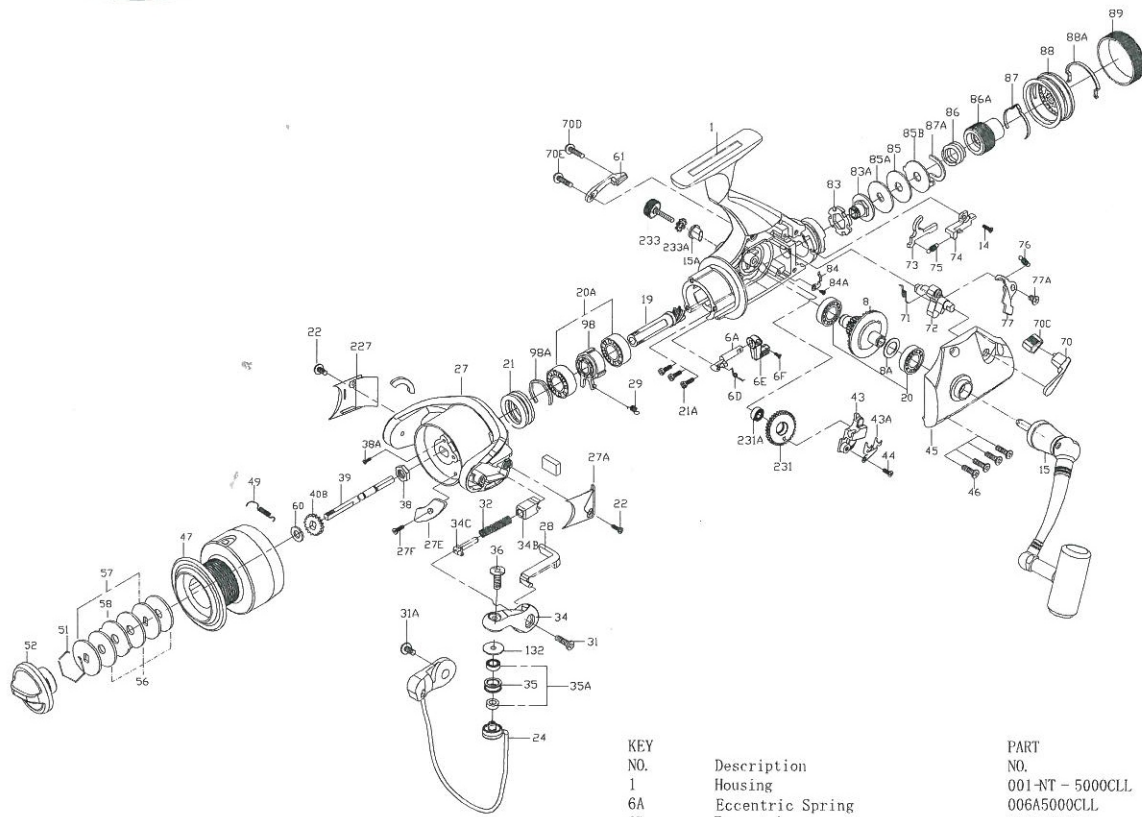




PARTS LIST FOR MODEL CLL5000



407-CLL5000 Rev 6 10/23/2012

KEY NO.	Description	PART NO.
1	Housing	001-NT - 5000CLL
6A	Eccentric Spring	006A5000CLL
6D	Eccentric	006D5000CLL
6E	Eccentric Lever	006E5000CLL
6F	Eccentric Lever Mounting Screw	006F5000CLL
8	Main Gear Assembly	008 5000CLL
8A	Main Gear Shim	008A5000CV
14	Screw	014 5000CLL
15	Handle Assembly	015N 5000CV
15A	Handle Retaining Bushing	015A500CV
19	Pinion Gear	019 5000CLL
20	Housing Ball Bearing (2 req.)	020 500CV
20A	Pinion Ball Bearing (2 req.)	020A500CV
21	Collar	021 5000CV
21A	Bearing Mounting Screws (3 req.)	021A2000CV
22	Cover Screw (2 req.)	022 500CV
24	Bail Wire	024 5000CV
27	Rotor Cup	027 5000CLL
27A	Bail Pivot Cover	027A5000CV
27E	Balance Weight	027E5000CV
27F	Balance Weight Screw	027F2000CV

KEY NO.	Description	PART NO.
28	Trip Lever	028 5000CV
29	Spring	029 5000CV
31	Bail Arm Screw	031 2000CV
31A	Bail Wire Screw	031A2000CV
32	Bail Spring	032 4000CV
34	Bail Arm	034 5000CV
34B	Pivot Guide	034B5000CV
34C	Pivot Arm	034C4000CV
35	Line Roller	035 5000CV
35A	Line Roller Ball Bearing (2 req)	035A 2000CV
36	Bail Stud Screw	036 2000CV
38	Rotor Nut	038 5000CV
38A	Rotor Nut Screw	038A2000CV
39	Spool Shaft	039 5000CLL
40B	Click Ratchet	040B5000CV
43	Crosswind Block	043 5000CLL
43A	Spool Shaft Clip	043A5000CLL
44	Crosswind Block Screw	044 2000CV
45	Housing Cover	045-NT - 5000CLL
46	Housing Cover Screws (4 req.)	046 5000CV
47	Spool Assembly	047 5000CLL
49	Click Spring	049 2000CV
51	Retaining Ring	051 2000CV
52	Drag Knob	052 5000CV
56	Friction Drag Washer (3 req)	056 2000CV
57	Keyed Washer (2 req)	057 5000CV
58	Drag Washer Earred	058 2000CV
60	Thrust Washer	060 5000CLL
70	L. S. Liveline Eccentric Lever	070 5000CLL
70B	R. S. Liveline Eccentric Lever	070B 5000CLL
70C	(Mid) Liveline Eccentric Lever	070C 5000CLL
70D	Liveline Eccentric Lever Screw	070D 4000CLL
70E	Liveline Eccentric Lever Screw	070E4000CLL
71	Liveline Liveline Eccentric Spring	071 4000CLL
72	Liveline Eccentric	072 5000CLL
73	Liveline Plate	073 5000CLL
74	Liveline Dog	074 5000CLL
75	Dog Spring	075 5000CLL
76	Trip Spring	076 4000CLL
77	Eccentric Trip	077 4000CLL
77A	Eccentric Trip Screw	077A4000CLL
83	Rear Drag Ratchet	083 5000CLL
83A	Rear Ratchet Insert	083A5000CLL
84	Rear Drag Click	084 5000CLL
84A	Click Spring Screw	084A 4000CLL
85	Rear Drag Washer	085 5000CLL
85A	Rear Keyed Washer	085A5000CLL
85B	Rear Earred Washer	085B5000CLL
86	Rear Drag Spring	086 5000CLL
86A	Rear Drag Nut	086A5000CLL
87	Rear Click Spring	087 5000CLL
87A	Rear Drag Retainer	087A5000CLL
88	Rear Drag Knob	088 5000CLL
88A	Rear Drag Knob Retainer	088A5000CLL
89	Rear Drag Knob Grip	089 5000CLL
98	Clutch Retainer	098 5000CLL
98A	Clutch Clip	098A5000CLL
132	Roller Washer	132 2000CV
227	Cam Cover	227 5000CV
231	Crosswind Gear	231 5000CLL
231A	Crosswind Gear Ball Bearing	020 500CV
233	Bearing Cover	233N 2000CV
233A	Handle cap washer	233A 2000CV