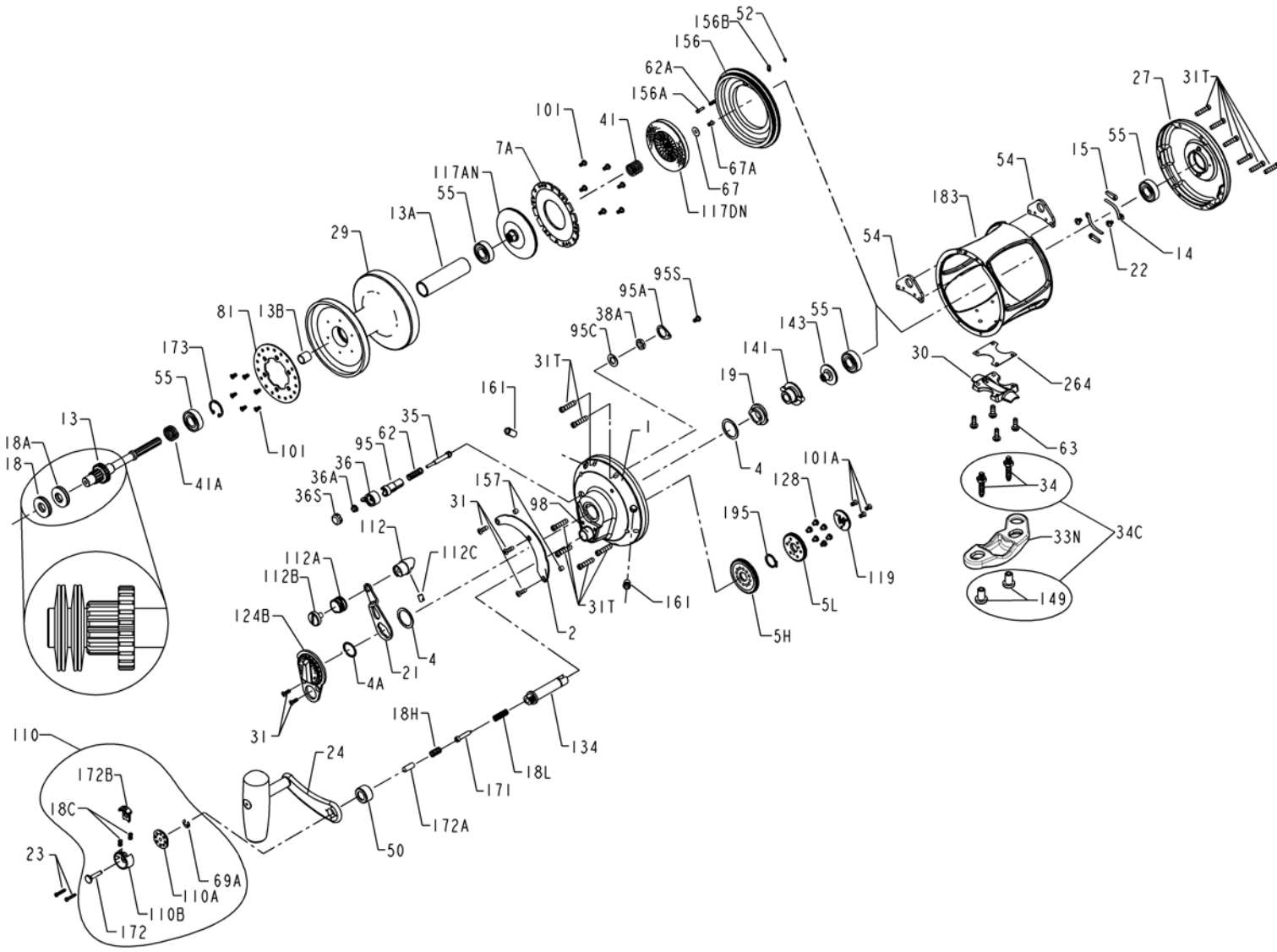




**PARTS LIST FOR MODEL 70VSL**



<u>KEY NO.</u>	<u>DESCRIPTION</u>	<u>PART NO.</u>
1	Right Side Plate Assembly	001 070
2	Quadrant Ring	002 070
4	Cam Thurst Washer (2 req.)	004 070
4A	Thrust Washer	004A070
5H	Main Gear (High Speed)	005 070HS
5L	Main Gear (Low Speed)	005N070LS
7A	Metal Drag Washer	007A070
13	Pinion Gear	013N070
13A	Spool Sleeve	013B070VS
13B	Pinion Gear Sleeve	013B070

<u>KEY NO.</u>	<u>DESCRIPTION</u>	<u>PART NO.</u>
14	Dog Spring (2 req.)	014 050
15	Dog	015 050
18	Disc Clutch Spring (2 req.)	018 080
18A	Disc Clutch Spring (2 req.)	018 080W
18C	Shift Button Spring (2 req.)	018C015KG
18H	Shift Spring (Heavy)	018H070
18L	Shift Spring (Light)	018L015KG
19	Eccentric Cam	019 070
21	Eccentric Lever	021 070
22	Dog Spring Screw (2 req.)	022 109
23	Shift Housing Screw (2 req.)	023 015KG

<u>KEY NO.</u>	<u>DESCRIPTION</u>	<u>PART NO.</u>
24	Handle Complete	024 070VS
27	Left Side Plate-Assembly	027 070
29	Spool	029L070
30	Stand	030 050T
31	Short Screw (5 req.)	031T070
31T	Side Plate Screw (12 req.)	031T080
33N	Rod Clamp	033N070
34	Clamp Screw (2 req.)	034 070
34C	Rod Clamp Screw w/Nut	034C070
35	Click Tongue	035 070
36	Click Button	036N050
36A	Click Button Nut	036 700
36S	Click Button Cap	036S080ST
38A	Click Bushing Nut	038 710
41	Bearing Spring	041 050
41A	Drag Spring	041 070
50	Shield	050 080ST
52	Retaining Ring	052 910
54	Harness Lug (2 req.)	054A080S
55	Ball Bearing (4 req.)	055 080
62	Click Spring	062 050
62A	Click Spring	062 545
63	Stand Screw (4 req.)	063 030T
67	Pinion Gear Washer	067 070
67A	Retaining Screw	067A070
69A	Retaining Ring	069B030S
81	Ratchet	081 070
95	Click Tongue Bushing	095 070
95A	Retaining Plate	095B070
95C	Click Bushing Washer	095A050
95S	Retaining Plate Screw	046A704
98	Bridge Bushing	098 070
101	Ratchet Screw (12 req.)	101 030
101A	Coupling Plate Screws (3 req.)	101 050S
110	Shifter Assembly	110 015KG
110A	Handle Locking Plate	110A015KG
110B	Shift Housing	110B015KG
112	Eccentric Lever Knob	112 070
112A	Knob Sleeve	112A070
112B	Eccentric Knob Screw	112B070
117A	Retaining Plate w/Drag Washer	117AN070
117DN	Drive Plate w/Drag Washer	117DN070
119	Coupling Plate	119 015KG
124B	Bridge Cover Assembly	124L070
128	Low Gear Pins (6 req.)	128 070
134	Gear Stud	134 070
141	Cam Follower	141 070
143	Preset Screw	143 070
149	Rod Clamp Nut (2 req.)	149 070
156	Drag Cover	156 070
156A	Lock Pin	156A030VS
156B	Lock Plate	156B030VS
157	Quadrant Spacing Bushing (2 req.)	157S012LT
161	Locating Pin Assembly (2 req.)	161C070
171	Shift Plunger	171 015KG
172	Shift Button (Low)	172 015KG
172A	Spring Spacer	172A070
172B	Shift Button (High)	172B015KG
173	Retaining Ring	173 080VS
183	Tube Frame	183 070
195	Retaining Ring	195 600
264	Stand Gasket	264 30T