



www.pfluegerfishing.com

Pure Fishing, a subsidiary of Jarden Corporation
(NYSE: JAH)



PFLUEGER[®]
QUALITY SINCE 1881

2012 CATALOG

The Smart Choice™. The Pflueger name stands for quality value, trusted performance and fishing tradition; and has for 130 years. We are proud to build reels that utilize the newest breakthroughs in technology along with materials that stand the test of time and continue to exceed your expectations.



XCR Ball Bearings

The XCR Bearing system combines the benefits of shielded bearings with up to 10x's greater corrosion resistance than standard stainless steel ball bearings. XCR bearings also reduce friction, which improves free spin resulting in a smoother performing reel. The bearing shields add additional protection by keeping dirt and grit from entering into race area.



Sealed Ball Bearings

Both sides of these bearings are fully sealed with a polymer cover between inner and outer races. These seals protect the ball bearings by keeping lubrication in and by keeping dirt, debris and moisture out. Sealed bearings are normally placed in key locations most likely to be subject to exposure from the elements. These types of ball bearing are normally made out of stainless steel.



Shielded Ball Bearings

The shields fit between the inner and outer races and provide protection to the bearings by preventing dirt and grit from settling in the race area. These bearings can be made out of chrome or stainless steel.



Open Ball Bearings

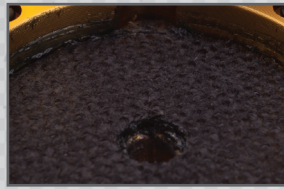
Open bearings are easy to identify because the small metal balls are visible from either side of the bearing. These bearings are normally located deep within the reel in areas where exposure to salt, moisture or the elements is unlikely.



One-Way Clutch Bearing

Also known as a 'one-way clutch' or 'instant anti-reverse', the clutch bearing consists of a number of needle bearings which turn in one direction only. With traditional dog and ratchet style anti-reverse systems, the angler experiences some back play in the rotor or handle. The amount of back play depends on the number of teeth on the ratchet – the more teeth the less back play. With a clutch bearing there is no back play which delivers faster, more solid hook sets.

ONE WAY CLUTCH



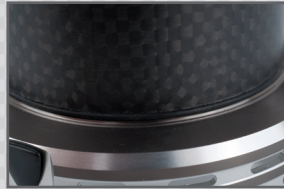
CARBON DRAG

The Carbon Drag system provides low start-up inertia, giving anglers smooth and consistent drag throughout the entire drag setting. Carbon Drag systems are virtually maintenance free and will not compress or buckle under pressure.



Oiled Felt Drag System

This proven system uses oil impregnated felt material to achieve a smooth and reliable drag performance. Strict requirements are used to select only the best oil and felt materials for our drag systems.



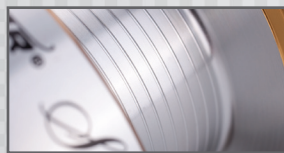
CARBON ARBOR

The Carbon Arbor spool has a unique and innovative design that combines aluminum with super light weight carbon. This combination provides an ultra lightweight spool with out sacrificing strength.



BRAID READY

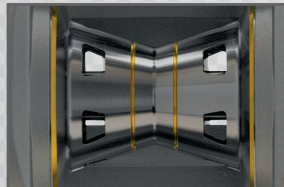
The Braid Ready spool incorporates built-in rubber grommets that grip braided lines and prevent them from sliding on the arbor of the spool. The grommets hold braided lines tightly to the spool arbor which saves both time and the extra step of having to back fill a reel with monofilament line or the using of tape. Eliminating the need to back fill with monofilament provides increased line capacity when using braided lines.



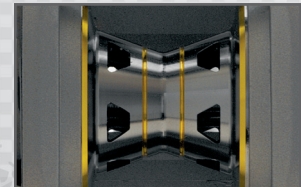
Aluminum Spinning Spool

The standard spool is made from strong, dependable aluminum that will not fail under stress. This spool also provides strength and protection to the drag system that is housed inside of the spool.

Wide vs. Narrow Baitcast Spool



The wide spool design allows for greater line capacity, or allows the use of heavier lines.



The narrow spool design allows better control for lighter line classes. The smaller spool also gives the angler a more compact, lighter reel design.

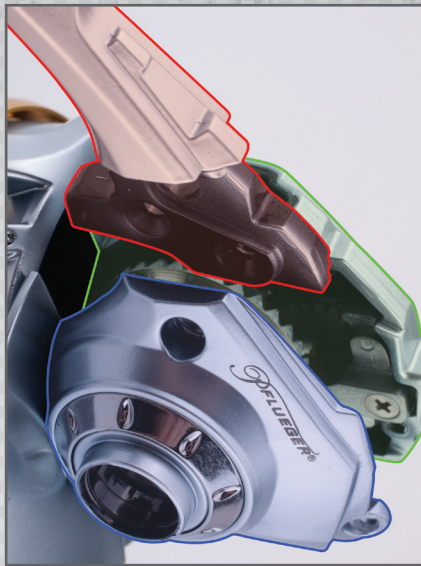


Solid Aluminum Bail Wire

Large solid aluminum bail wire provides superior strength and resistance to warping.



Specially coated magnesium reels allow for a lightweight design, without sacrificing strength or durability.



HYBRID BODY

The Hybrid Body system uses both aluminum and graphite body components to provide the best of both worlds. This system has the lightweight attributes associated with graphite while providing the strength and durability of aluminum.

- Aluminum stem for strength and no flex
- Graphite body for weight reduction
- Aluminum sideplate on gear side for strong gear alignment

ALUMINUM BODY

Aluminum body reels provide strength and stability to the gears that are housed inside of the reel body. The provided strength and stability increases the life of your reel while maintaining a solid gear feel.

GRAPHITE BODY

Allows for a lightweight design, while still maintaining proper gear alignment.



TITANIUM COATED SIDEPLATES

Titanium coated sideplate that provides extra protection for the reel. This outer coating is extremely durable and resists scratching. The Titanium shell also provides an added layer of protection against corrosion when fishing in saltwater conditions.

ALUMINUM FRAME

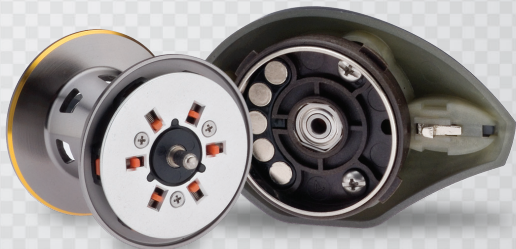
ALUMINUM SIDEPLATES

Provides maximum strength, to allow proper gear alignment, which maintain gear feel and smoothness.

GRAPHITE FRAME

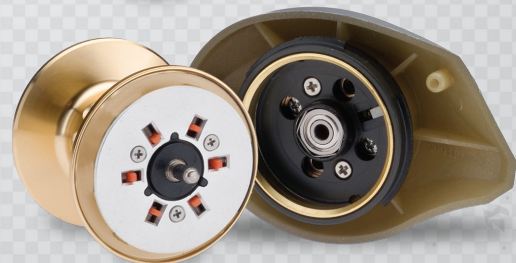
GRAPHITE SIDEPLATES

Allows for a lightweight design, while still maintaining proper gear alignment.



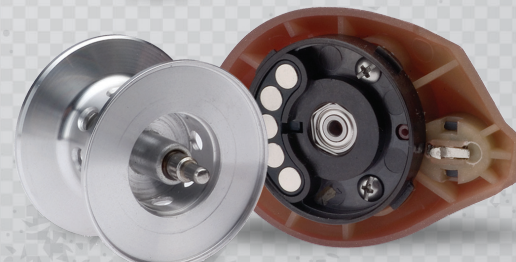
ULTIMATE BRAKE SYSTEM™

With this Ultimate Brake System™ design, an adjustable six-pin centrifugal brake is combined with an externally adjustable magnetic brake to provide a virtually limitless range of spool control settings. Both braking systems work in conjunction with each other to provide the ultimate casting experience. The primary function of the centrifugal brake system is to control spool speed and prevent backlash at the beginning of the cast when spool RPM's are the greatest. The magnetic brake system slows the spool rotation near the end of the cast to prevent line overrun.



CENTRIFUGAL BRAKE SYSTEM™

This Centrifugal Brake System™ is completely self-contained. The brakes are locked within a containment plate that still allows the angler to adjust the number of brakes to have on or off. The primary function of the centrifugal brake system is to control spool speed and prevent backlash at the beginning of the cast when the spool RPM's are the greatest. The brake weights can easily be locked or "disengaged" for a faster spool rotation to maximize your casting distance.



MAGNETIC BRAKING SYSTEM

The Pflueger Magnetic Braking System utilizes a set of magnets that affect the rotation of the spool. The closer the magnets are to the spool, the slower it will spin. Our reels with this feature use an adjustable dial on the side plate to pull the magnets away from the spool and allow the spool to spin at higher RPM's. The design behind this feature gives a fisherman the ability to adjust the magnets to allow for increased casting distances.

TABLE OF CONTENTS

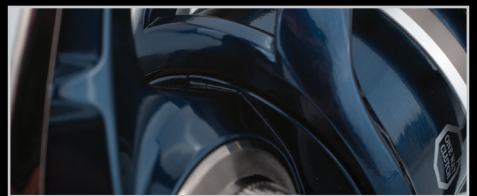
2-10	SPINNING REELS
11-13	SPINNING COMBOS
14-18	BAITCAST REELS
19	BAITCAST COMBOS
20	SPINCASTING REELS
21	SPINCASTING COMBOS
22-23	LADIES COMBOS
24	FLY REELS
25	FLY KITS



Lightweight Carbon Arbor Aluminum Spool
The specially designed carbon arbor spool allows for maximum weight reduction without sacrificing strength.



Titanium Main Shaft
The titanium main shaft is 43% lighter and 30% stronger than a comparable stainless steel main-shaft.



Magnesium Body, Rotor & Sideplate
Specially coated magnesium reels allow for a lightweight design, without sacrificing strength or durability.

Patriarch™

Model #	SAP #	Capacity: Mono	Capacity: Braid	Max Drag	Gear Ratio	Inches-Per-Turn	Weight
9525	1204770	110 yards / 4 lb.	110 yards / 6 lb.	8 lb.	5.2:1	24.5	5.6 oz.
9530	1204771	120 yards / 6 lb.	115 yards / 8 lb.	10 lb.	5.2:1	27.0	6.3 oz.
9535	1204772	140 yards / 8 lb.	150 yards / 10 lb.	16 lb.	5.2:1	28.8	7.4 oz.
9540	1204773	170 yards / 10 lb.	160 yards / 14 lb.	16 lb.	5.2:1	32.7	8.1 oz.

- Ultra lightweight magnesium body, rotor, and sideplate
- Lightweight double anodized aluminum spool with carbon arbor
- 9 stainless steel ball bearings
- XCR bearings in key locations
- Instant anti-reverse bearing
- Solid aluminum bail wire
- Sure-click™ bail provides an audible signal when bail is fully opened and ready to cast
- Anti-twist titanium coated line roller
- Lightweight carbon handle
- Durable EVA knob
- Solid titanium main shaft
- Sealed carbon drag system
- Convertible left or right hand retrieve
- Spring loaded line clip
- Neoprene protective bag
- Aluminum spare spool
- On/Off anti-reverse



XCR Bearing System

Provides up to 10x greater corrosion resistance than stainless steel ball bearings while delivering a smooth, frictionless feel.



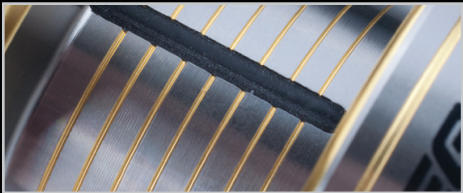
Sealed Carbon Drag System

A sealed Carbon drag system stops the intrusion of water and debris, while providing smooth consistent drag pressure throughout the entire drag setting.



Carbon Handle with EVA Knobs

The Pflueger carbon handle design is 21% lighter than a comparable aluminum handle design, without sacrificing any strength.



Braid Ready Spool

Braid can be tied directly to the spool, eliminating the need to use monofilament backing to reduce slippage.



Magnesium Body & Rotor

Specially coated magnesium reels allow for a lightweight design, without sacrificing strength or durability.



Solid Aluminum Bail Wire

Large solid aluminum bail wire provides superior strength and resistance to warping.

Supreme^{XT}



CARBON
DRAG

BRAID
READY



Model #	SAP #	Capacity: Mono	Capacity: Braid	Max Drag	Gear Ratio	Inches-Per-Turn	Weight
9225XT	1201497	110 yards / 4 lb.	140 yards / 6 lb.	7 lb.	5.2:1	22.4	6.3 oz.
9230XT	1201498	145 yards / 6 lb.	190 yards / 8 lb.	10 lb.	6.2:1	30.0	7.2 oz.
9235XT	1201529	185 yards / 8 lb.	220 yards / 10 lb.	12 lb.	6.2:1	32.7	8.6 oz.
9240XT	1201530	230 yards / 10 lb.	280 yards / 14 lb.	14 lb.	6.2:1	35.1	9.3 oz.

- Lightweight durable magnesium body & rotor
- 9 stainless steel ball bearings
- Corrosion resistant bearings in key locations
- One-way clutch instant anti-reverse bearing
- Smooth sealed carbon fiber drag system
- Double anodized machined aluminum spool with holes
- Aluminum side plate
- Sure-Click™ bail provides an audible signal when bail is fully opened and ready to cast
- Large solid aluminum bail wire
- Anti-twist titanium coated line roller
- Lightweight carbon handle
- Durable EVA knob
- Spare aluminum spool
- Convertible right or left hand retrieve
- On/Off anti-reverse
- Neoprene reel bag



Carbon Handle with EVA Knobs

The Pflueger carbon handle design is 21% lighter than a comparable aluminum handle design, without sacrificing any strength.



Supreme^{NEW}



BRAID
READY



Model #	SAP #	Capacity: Mono	Capacity: Braid	Max Drag	Gear Ratio	Inches-Per-Turn	Weight
8225MG	1236641	110 yards / 4 lb.	140 yards / 6 lb.	6 lb.	5.2:1	22.4	6.6 oz.
8230MG	1236642	145 yards / 6 lb.	190 yards / 8 lb.	9 lb.	6.2:1	30.0	7.5 oz.
8235MG	1236643	185 yards / 8 lb.	220 yards / 10 lb.	10 lb.	6.2:1	32.7	8.9 oz.
8240MG	1236644	230 yards / 10 lb.	280 yards / 14 lb.	12 lb.	6.2:1	35.1	9.7 oz.

- Lightweight durable magnesium body & rotor
- 9 stainless steel ball bearings
- Instant anti-reverse bearing
- Solid aluminum bail wire
- Machined, ported and double anodized aluminum spool
- Braid ready spool
- Sure-Click™ bail provides an audible signal when bail is fully opened and ready to cast
- Anti-twist titanium coated line roller
- Convertible left and right hand retrieve
- On/Off anti-reverse





Braid Ready Spool

Braid can be tied directly to the spool, eliminating the need to use monofilament backing to reduce slippage.



Hybrid Body System

This system has the lightweight attributes associated with graphite while providing the strength and durability of aluminum.



Sealed Carbon Drag System

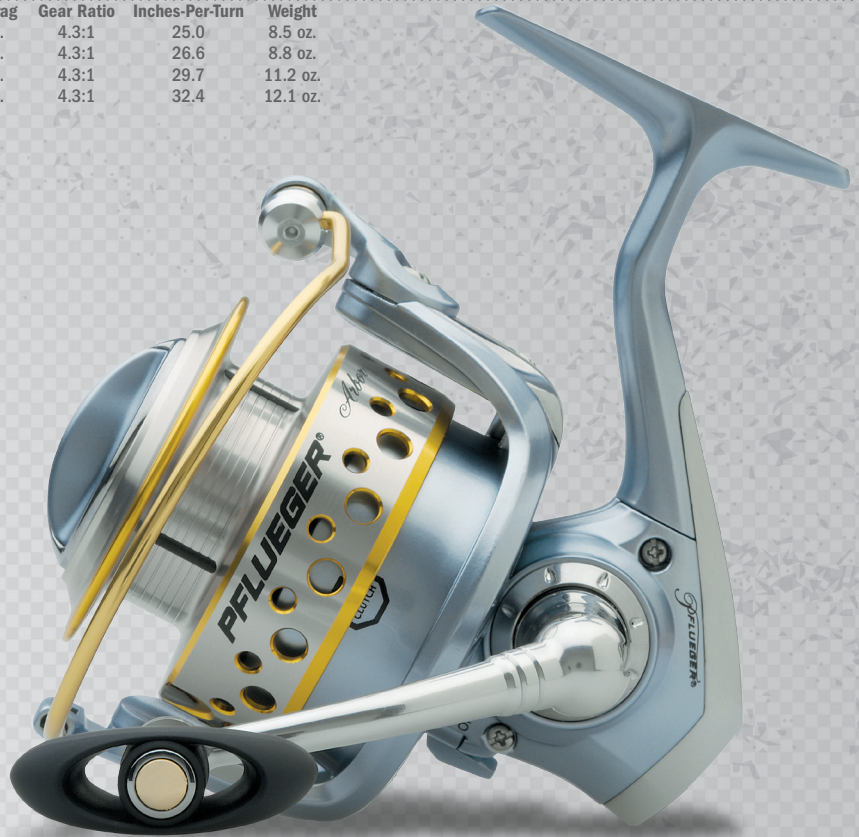
A sealed carbon drag system stops the intrusion of water and debris, while providing smooth consistent drag pressure throughout the entire drag setting.

Arbor

BEARING SYSTEM 8 HYBRIDBODY CARBON DRAG BRAID READY ONE-WAY CLUTCH

Model #	SAP #	Capacity: Mono	Capacity: Braid	Max Drag	Gear Ratio	Inches-Per-Turn	Weight
7430	1197159	120 yards / 6 lb.	160 yards / 8 lb.	10 lb.	4.3:1	25.0	8.5 oz.
7435	1204765	155 yards / 8 lb.	195 yards / 10 lb.	10 lb.	4.3:1	26.6	8.8 oz.
7440	1197160	150 yards / 10 lb.	250 yards / 15 lb.	14 lb.	4.3:1	29.7	11.2 oz.
7450	1204766	225 yards / 12 lb.	330 yards / 15 lb.	25 lb.	4.3:1	32.4	12.1 oz.

- 7 stainless steel ball bearings
- One-way clutch instant anti-reverse bearing
- Lightweight hybrid construction provides strength of an aluminum body without the weight
- Double anodized aluminum spool
- Lightweight graphite rotor
- Smooth sealed carbon fiber drag system
- Braid ready spool
- Large arbor spool design for maximum line control
- Sure-Click™ bail provides an audible signal when bail is fully opened and ready to cast
- Solid aluminum bail wire
- Spare aluminum spool



Arbor

BEARING SYSTEM 8 HYBRIDBODY CARBON DRAG BRAID READY ONE-WAY CLUTCH IM-8 GRAPHITE



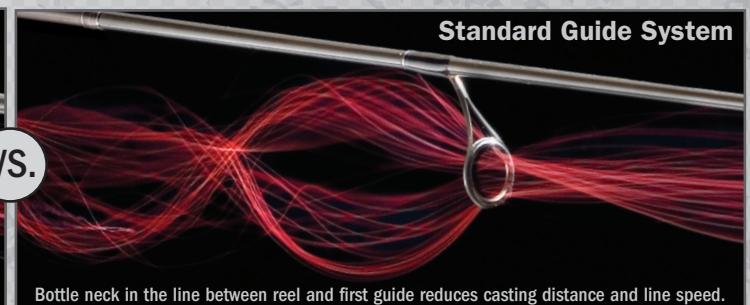
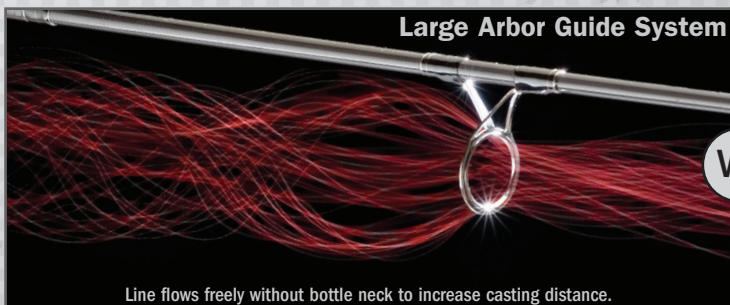
Combo Model #	SAP #	Capacity: Braid	Action	Length	Pieces	Lure Weight	Reel
7430CBO	1197161	160 yards / 8 lb.	Medium Light	6'6"	1	1/4 - 1/2 oz.	7430
7435CBO661M	1204767	195 yards / 10 lb.	Medium	6'6"	1	1/4 - 5/8 oz.	7435
7435CBO741M	1204768	195 yards / 10 lb.	Medium	7'4"	1	1/4 - 5/8 oz.	7535
7440CBO	1197162	250 yards / 15 lb.	Medium	7'0"	1	1/4 - 5/8 oz.	7440
7450CBO701MH	1204769	330 yards / 15 lb.	Medium Heavy	7'0"	1	5/8 - 3/4 oz.	7450

PFLUEGER GRAPHITE COMBO ROD

- IM-8 graphite for lightweight and increased sensitivity
- Durable stainless steel framed guides
- Top grade cork handle for comfortable grip
- Lightweight graphite reel seat
- Stainless steel hook keeper
- Split grip design
- Specifically designed for the Arbor reels
- Large Arbor Guide System

Large Arbor Guide System

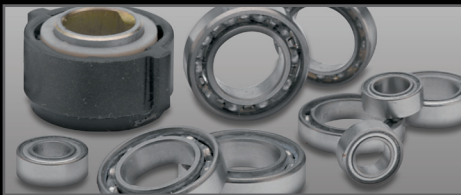
The Arbor rod utilizes the Large Arbor Guide System. By combining a reversed stripping guide, and larger sized guides, this allows line to flow more easily up the rod and eliminates the bottle neck effect that occurs with traditional rods. This ensures anglers get the greatest distance with every cast.



VS.

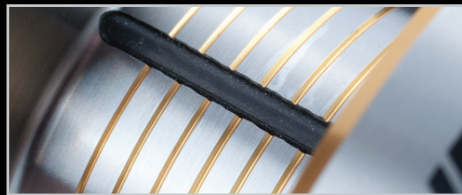
Line flows freely without bottle neck to increase casting distance.

Bottle neck in the line between reel and first guide reduces casting distance and line speed.



Bearings

High grade stainless steel ball bearings delivering strength and durability with corrosion resistance attributes.



Braid Ready Spool

Braid can be tied directly to the spool, eliminating the need to use monofilament backing to reduce slippage.



Soft Touch Knob

Soft Touch Knob provides superior ergonomics and tactile grip.

President^{XT}



Model #	SAP #	Capacity: Mono	Capacity: Braid	Max Drag	Gear Ratio	Inches-Per-Turn	Weight
6725XT	1150856	115 yards / 4 lb.	145 yards / 6 lb.	7 lb.	5.2:1	22.4	7.5 oz.
6730XT	1150857	115 yards / 6 lb.	150 yards / 8 lb.	9 lb.	5.2:1	25.2	9.0 oz.
6735XT	1150858	145 yards / 8 lb.	200 yards / 10 lb.	10 lb.	5.2:1	27.4	11.4 oz.
6740XT	1150859	195 yards / 10 lb.	230 yards / 14 lb.	12 lb.	5.2:1	30.2	12.6 oz.
6750XT	1150860	220 yards / 14 lb.	270 yards / 20 lb.	14 lb.	4.6:1	30.5	19.6 oz.
6760XT	1150861	230 yards / 17 lb.	290 yards / 30 lb.	17 lb.	4.6:1	31.6	20.9 oz.

- 9 stainless steel ball bearings
- One-way clutch instant anti-reverse bearing
- Smooth sealed carbon fiber drag system
- Lightweight hybrid construction, provides the strength of an all aluminum body without the weight
- Anodized aluminum spool with distinctive hole pattern for lighter weight
- Large diameter titanium coated line roller
- Sure-Click™ bail provides an audible signal when bail is fully opened and ready to cast
- Corrosion-resistant stainless steel main shaft and components
- Machined aluminum handle with soft touch knob
- Spare aluminum spool
- On/Off anti-reverse



Hybrid Body System

The Hybrid Body System uses both aluminum and graphite body components to provide the best of both worlds.



President[®]

NEW



Model #	SAP #	Capacity: Mono	Capacity: Braid	Max Drag	Gear Ratio	Inches-Per-Turn	Weight
6920	1236618 Box / 1236649 Clam	100 yards / 4 lb.	125 yards / 6 lb.	6 lb.	5.2:1	20.7	5.9 oz.
6925	1236650 Box / 1236651 Clam	110 yards / 4 lb.	140 yards / 6 lb.	6 lb.	5.2:1	22.4	7.2 oz.
6930	1236652 Box / 1236653 Clam	145 yards / 6 lb.	190 yards / 8 lb.	9 lb.	5.2:1	25.2	8.3 oz.
6935	1236654 Box / 1236655 Clam	185 yards / 8 lb.	220 yards / 10 lb.	10 lb.	5.2:1	27.4	9.9 oz.
6940	1236656 Box / 1236640 Clam	230 yards / 10 lb.	280 yards / 14 lb.	12 lb.	5.2:1	30.2	10.9 oz.

- 9 stainless steel ball bearings (6920 has 7 ball bearings)
- Instant anti-reverse one-way clutch bearing
- Machined, ported and double anodized aluminum spool with distinctive hole pattern for lighter weight
- Braid ready spool
- Titanium coated spool lip for added line protection
- Large diameter titanium coated line roller
- Smooth multi-disc drag system with stainless steel and oiled felt washers
- Sure-Click™ bail provides an audible signal when bail is fully opened and ready to cast
- Solid aluminum bail wire
- Corrosion-resistant stainless steel main shaft and components
- Aluminum handle with soft touch knob
- On/off anti-reverse



Solid Aluminum Bail Wire

Large solid aluminum bail wire provides superior strength and resistance to warping.

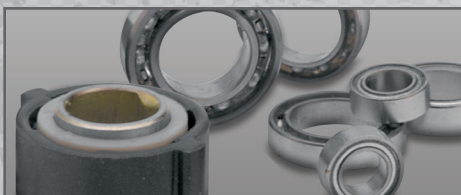


Trion®



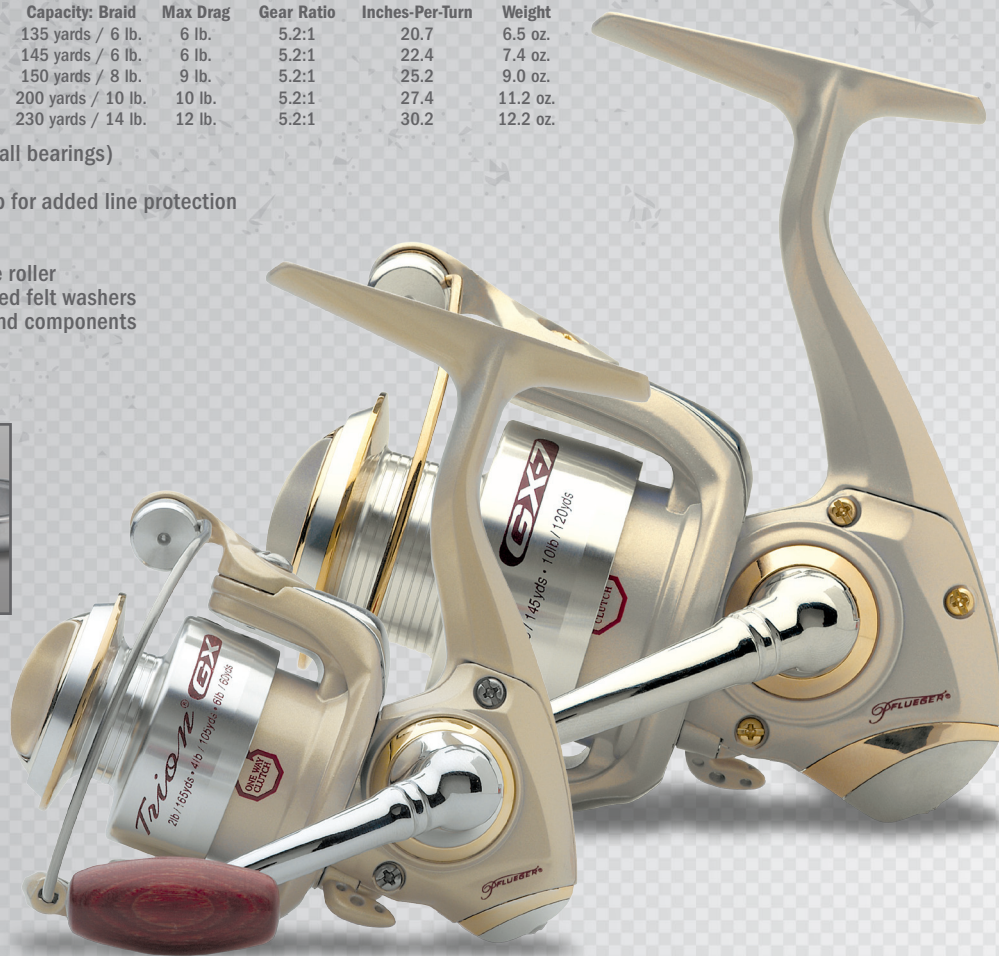
Model #	SAP #	Capacity: Mono	Capacity: Braid	Max Drag	Gear Ratio	Inches-Per-Turn	Weight
4520GX	1150198 Box / 1150197 Clam	105 yards / 4 lb.	135 yards / 6 lb.	6 lb.	5.2:1	20.7	6.5 oz.
4725GX	1150204 Box / 1150201 Clam	115 yards / 4 lb.	145 yards / 6 lb.	6 lb.	5.2:1	22.4	7.4 oz.
4730GX	1150208 Box / 1150205 Clam	115 yards / 6 lb.	150 yards / 8 lb.	9 lb.	5.2:1	25.2	9.0 oz.
4735GX	1150213 Box / 1150210 Clam	145 yards / 8 lb.	200 yards / 10 lb.	10 lb.	5.2:1	27.4	11.2 oz.
4740GX	1150215 Box / 1150214 Clam	195 yards / 10 lb.	230 yards / 14 lb.	12 lb.	5.2:1	30.2	12.2 oz.

- 6 stainless steel ball bearings (4520GX has 4 ball bearings)
- Instant anti-reverse one-way clutch bearing
- Anodized aluminum spool with titanium spool lip for added line protection
- Lightweight graphite body and rotor
- Sure-Click™ bail
- Large diameter titanium coated ball bearing line roller
- Smooth drag system with stainless steel and oiled felt washers
- Corrosion-resistant stainless steel main shaft and components
- Aluminum handle with rosewood knob
- Spare aluminum spool included



Bearings

High grade stainless steel ball bearings delivering strength and durability with corrosion resistance attributes.



Microspin®



Model #	SAP #	Capacity: Mono	Capacity: Braid	Max Drag	Gear Ratio	Inches-Per-Turn	Weight
4410	1150196 Box / 1150193 Clam	100 yards / 4 lb.	130 yards / 6 lb.	6 lb.	5.2:1	19.6	6.0 oz.

- 4 ball bearings
- Aluminum spool
- Titanium coated line roller
- Spare aluminum spool
- Left/right retrieve with rosewood knob



Micro Size Design

Perfect for all light line fishing applications.



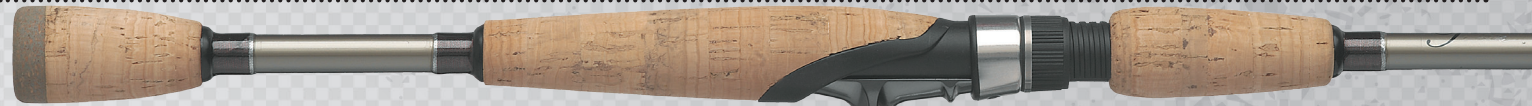
Arbor

SEE COMBO ON PAGES 6-7

Medalist



IM-8 GRAPHITE



Combo Model #	SAP #	Action	Length	Pieces	Lure Weight	Reel	Capacity: Mono
PFLMED5625CBO	1150779	Light	5'6"	1	1/16 - 3/8 oz.	25 Size	115 yards / 4 lb.
PFLMED6030CBO	1150780	Medium	6'0"	1	1/8 - 5/8 oz.	30 Size	115 yards / 6 lb.
PFLMED6635CBO	1150781	Medium	6'6"	1	1/8 - 5/8 oz.	35 Size	145 yards / 8 lb.
PFLMED7040CBO	1150782	Medium	7'0"	1	1/8 - 5/8 oz.	40 Size	195 yards / 10 lb.

MEDALIST COMBO REEL

- 9 stainless steel ball bearings, with pinion and main gear bearings fully sealed
- One-way clutch instant anti-reverse bearing
- Smooth sealed carbon fiber drag system
- Rugged aluminum body and rotor
- Machined aluminum handle with soft touch knob
- Anodized aluminum spool

MEDALIST GRAPHITE COMBO ROD

- IM-8 graphite for lightweight and increased sensitivity
- Durable stainless steel framed guides with stainless steel inserts
- Top grade cork handle for comfortable grip
- Lightweight graphite reel seat
- Stainless steel fold down hook keeper



President

NEW

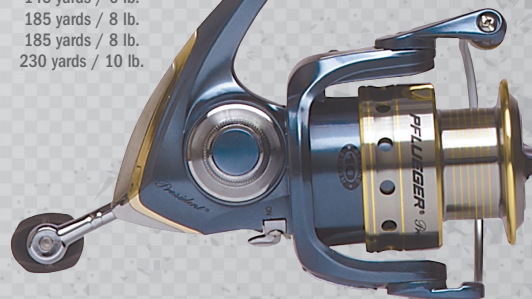
IM-8 GRAPHITE



Combo Model #	SAP #	Action	Length	Pieces	Lure Weight	Reel	Capacity: Mono
PFLPRES2-482COMBO	1236667	Ultralight	4'8"	2	1/32 - 3/16 oz.	6920	100 yards / 4 lb.
PFLPRES2-50COMBO	1236668	Ultralight	5'0"	1	1/32 - 3/16 oz.	6925	110 yards / 4 lb.
PFLPRES2-56COMBO	1236669	Light	5'6"	1	1/16 - 3/8 oz.	6930	145 yards / 6 lb.
PFLPRES2-60COMBO	1236670	Medium	6'0"	1	1/8 - 5/8 oz.	6930	145 yards / 6 lb.
PFLPRES2-66COMBO	1236671	Medium	6'6"	1	1/8 - 5/8 oz.	6935	185 yards / 8 lb.
PFLPRES2-662COMBO	1236672	Light	6'6"	2	1/16 - 3/8 oz.	6935	185 yards / 8 lb.
PFLPRES2-70COMBO	1236673	Medium	7'0"	1	1/8 - 5/8 oz.	6940	230 yards / 10 lb.

PRESIDENT GRAPHITE COMBO ROD

- IM-8 graphite for lightweight and increased sensitivity
- Stainless steel frames with aluminum oxide inserts (except on 4'8" has stainless steel inserts)
- Top grade cork handles for comfortable grip



Trion®



GRAPHITE BODY



IM-8 GRAPHITE



Combo Model #	SAP #	Action	Length	Pieces	Lure Weight	Reel	Capacity: Mono
PFLTRIONGX48CBO	1147184	Ultralight	4'8"	1	1/32 - 3/16 oz.	4720GX	105 yards / 4 lb.
PFLTRIONGX50CBO	1147185	Ultralight	5'0"	1	1/32 - 3/16 oz.	4725GX	115 yards / 4 lb.
PFLTRIONGX56CBO	1147186	Light	5'6"	1	1/16 - 3/8 oz.	4730GX	115 yards / 6 lb.
PFLTRIONGX60CBO	1147187	Medium	6'0"	1	3/8 - 5/8 oz.	4730GX	115 yards / 6 lb.
PFLTRIONGX66CBO	1147188	Medium	6'6"	1	3/8 - 5/8 oz.	4735GX	145 yards / 8 lb.
PFLTRIONGX662CB	1147377	Medium	6'6"	2	3/8 - 5/8 oz.	4735GX	145 yards / 8 lb.
PFLTRIONGX66LCB	1147150	Light	6'6"	2	1/16 - 3/8 oz.	4730GX	115 yards / 6 lb.
PFLTRIONGX70CBO	1147191	Medium	7'0"	1	3/8 - 5/8 oz.	4740GX	195 yards / 10 lb.

TRION GRAPHITE COMBO ROD

- IM-8 graphite for lightweight and increased sensitivity
- Stainless steel frames with aluminum oxide inserts (except on 4'8" has stainless steel inserts)
- Top grade cork handle for comfortable grip
- Stainless steel double foot hook keeper

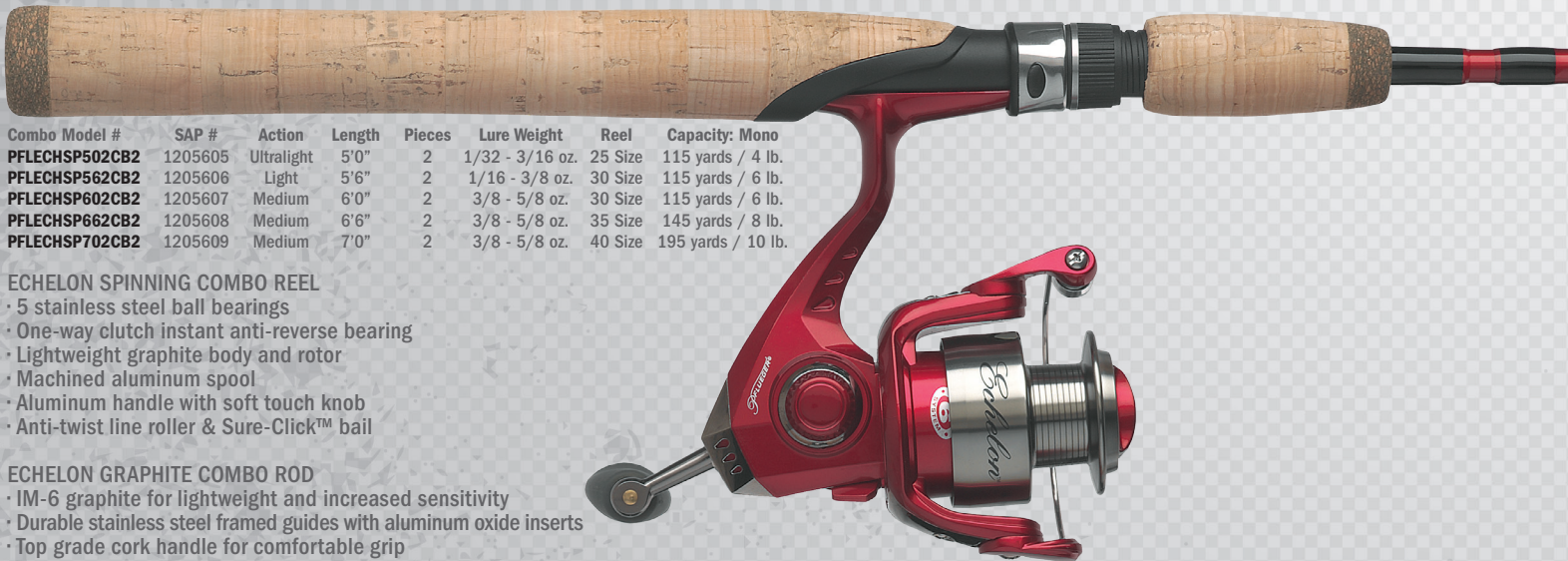
Echelon™



GRAPHITE BODY



IM-6 GRAPHITE



Combo Model #	SAP #	Action	Length	Pieces	Lure Weight	Reel	Capacity: Mono
PFLECHSP502CB2	1205605	Ultralight	5'0"	2	1/32 - 3/16 oz.	25 Size	115 yards / 4 lb.
PFLECHSP562CB2	1205606	Light	5'6"	2	1/16 - 3/8 oz.	30 Size	115 yards / 6 lb.
PFLECHSP602CB2	1205607	Medium	6'0"	2	3/8 - 5/8 oz.	30 Size	115 yards / 6 lb.
PFLECHSP662CB2	1205608	Medium	6'6"	2	3/8 - 5/8 oz.	35 Size	145 yards / 8 lb.
PFLECHSP702CB2	1205609	Medium	7'0"	2	3/8 - 5/8 oz.	40 Size	195 yards / 10 lb.

ECHELON SPINNING COMBO REEL

- 5 stainless steel ball bearings
- One-way clutch instant anti-reverse bearing
- Lightweight graphite body and rotor
- Machined aluminum spool
- Aluminum handle with soft touch knob
- Anti-twist line roller & Sure-Click™ bail

ECHELON GRAPHITE COMBO ROD

- IM-6 graphite for lightweight and increased sensitivity
- Durable stainless steel framed guides with aluminum oxide inserts
- Top grade cork handle for comfortable grip
- Lightweight graphite reel seat with stainless steel cushioned hoods
- Stainless steel double foot hook keeper

Apprentice™



GRAPHITE BODY



IM-6 GRAPHITE



Combo Model #	SAP #	Action	Length	Pieces	Lure Weight	Reel	Capacity: Mono
PFLAPRNB5102M	1205624	Medium	5'10"	2	3/8 - 5/8 oz.	30 Size	115 yards / 6 lb.



Combo Model #	SAP #	Action	Length	Pieces	Lure Weight	Reel	Capacity: Mono
PFLAPRNP5102M	1205625	Medium	5'10"	2	3/8 - 5/8 oz.	30 Size	115 yards / 6 lb.



APPRENTICE SPINNING COMBO REEL

- 3 Stainless Steel Ball Bearings
- Instant anti-reverse bearing
- Lightweight graphite body and rotor
- Machined aluminum spool
- Aluminum handle with soft touch knob
- Anti-twist line roller

APPRENTICE GRAPHITE COMBO ROD

- 5'10" IM-6 graphite rod
- Custom sized cork split grip
- Durable stainless steel framed guides with aluminum oxide inserts
- Lightweight graphite reel seat
- Stainless steel double foot hook keeper

Microspin®



GRAPHITE BODY



IM-6 GRAPHITE



ULTRALIGHT GRAPHITE COMBO ROD

- 4'6" one-piece ultralight spinning rod
- IM-6 graphite construction and top grade cork handle

Combo Model #	SAP #	Action	Length	Pieces	Lure Weight	Reel	Capacity: Mono
PFLMICROULCB0	1147419	Ultralight	4'6"	1	1/32 - 3/16 oz.	4410	100 yards / 4 lb.





Patriarch™



Model #	SAP #	Capacity: Mono	Capacity: Braid	Max Drag	Gear Ratio	Inches-Per-Turn	Weight	Spool Type	Hand Retrieve
PATRIARCH64LP	1203267	100 yards / 12 lb.	110 yards / 30 lb.	20 lb.	6.4:1	25	8.0 oz.	Standard	Right
PATRIARCH71LP	1203268	100 yards / 12 lb.	110 yards / 30 lb.	18 lb.	7.1:1	29	8.0 oz.	Standard	Right
PATRIARCH71WLP	1146977	130 yards / 14 lb.	190 yards / 30 lb.	18 lb.	7.1:1	30	8.2 oz.	Wide	Right

- 10 double-shielded stainless steel ball bearings
- One-way clutch instant anti-reverse bearing
- Rigid aluminum frame with titanium coated aluminum sideplates
- Ultimate Brake System™ combines centrifugal and magnetic brakes for a limitless range of cast control
- Machined, ported and double anodized aluminum spool

- Main gear applied star drag system with carbon fiber washers
- Lightweight aluminum frame with aluminum handle side and palm sideplate
- Soft touch thumb bar spool release
- Titanium line guide
- Neoprene reel bag



Titanium coated sideplate
Titanium coated sideplate that provides extra protection for the reel. This outer coating is extremely durable and resists scratching. The Titanium shell also provides an added layer of protection against corrosion when fishing in saltwater conditions.



Ultimate Brake System™
The combination of a centrifugal and magnetic brake provides maximum control throughout the entire cast cycle. The centrifugal brake controls the first half of the cast when the spool rotation is the fastest. As the spool slows, the magnetic brake engages to control the last half of the cast.



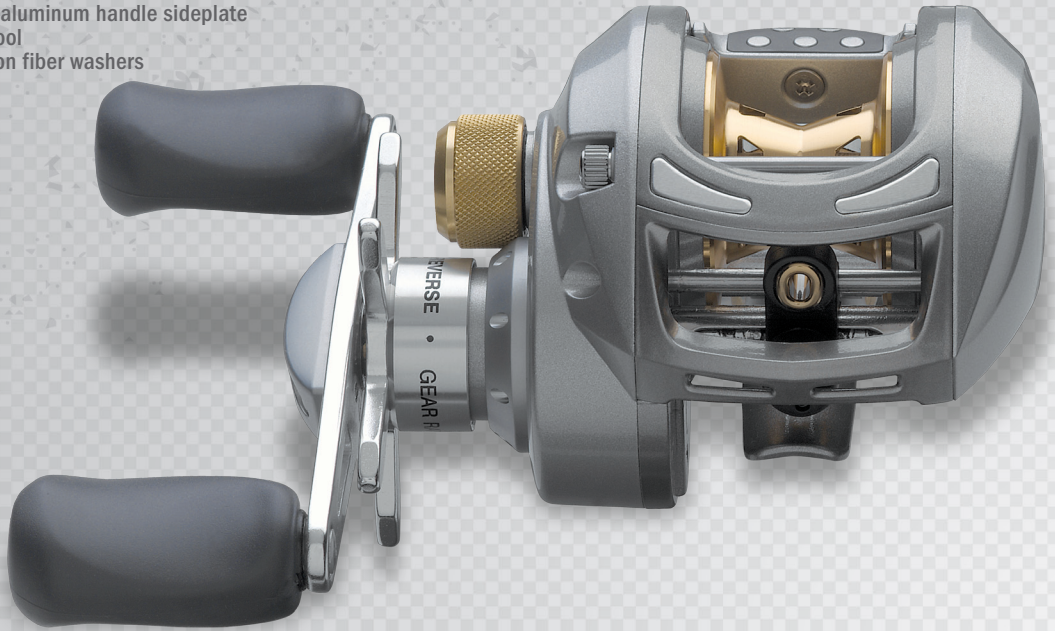
Carbon Drag System
Provides smooth consistent drag pressure throughout the entire drag setting.

President®



Model #	SAP #	Capacity: Mono	Capacity: Braid	Max Drag	Gear Ratio	Inches-Per-Turn	Weight	Spool Type	Hand Retrieve
PRESIDENT2LP	1152450	100 yards / 12 lb.	110 yards / 30 lb.	20 lb.	6.4:1	25	8.0 oz.	Standard	Right
PRESIDENT2WLP	1152451	130 yards / 14 lb.	190 yards / 30 lb.	20 lb.	6.4:1	27	8.4 oz.	Wide	Right

- 9 double-shielded stainless steel ball bearings
- One-way clutch instant anti-reverse bearing
- Six-pin adjustable centrifugal brake system
- Rugged one-piece solid aluminum frame with aluminum handle sideplate
- Machined, ported and anodized aluminum spool
- Main gear applied star drag system with carbon fiber washers
- Aluminum handle with soft-touch knobs
- Soft-touch thumb bar spool release
- Titanium line guide



CBS
This self contained centrifugal brake design delivers consistent control for all casting situations.



Aluminum Frame & Sideplate
Provides strength and durability to ensure correct gear alignment.

Trion®



Model #	SAP #	Capacity: Mono	Capacity: Braid	Max Drag	Gear Ratio	Inches-Per-Turn	Weight	Spool Type	Hand Retrieve
TRION3LP	1201723	100 yards / 12 lb.	110 yards / 30 lb.	15 lb.	6.4:1	26	7.8 oz.	Standard	Right
TRION3WLP	1201724	130 yards / 14 lb.	190 yards / 30 lb.	15 lb.	6.4:1	29	8.2 oz.	Wide	Right
TRION3WLPCR*	1201725	130 yards / 14 lb.	190 yards / 30 lb.	15 lb.	5.2:1	24	8.2 oz.	Wide	Right

- 6 double-shielded stainless steel ball bearings
- One-way clutch instant anti-reverse bearing
- Six-pin adjustable centrifugal brake system
- Rugged one-piece solid aluminum frame with graphite handle sideplate
- Machined, ported and anodized aluminum spool
- Smooth multi-disc main gear applied star drag system
- Sturdy aluminum handle with soft-touch knobs
- Soft-touch thumb bar spool release
- Titanium line guide
- *Cranking model available



CBS
This self contained centrifugal brake design delivers consistent control for all casting situations.



Aluminum Frame & Graphite Sideplate
Provides strength and durability to ensure correct gear alignment.

Cetina™



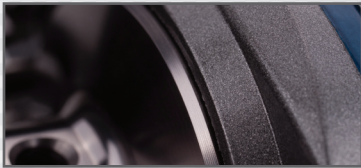
Model #	SAP #	Capacity: Mono	Capacity: Braid	Max Drag	Gear Ratio	Inches-Per-Turn	Weight	Spool Type	Hand Retrieve
PFLCETINALP	1146980	100 yards / 12 lb.	110 yards / 30 lb.	14 lb.	7.1:1	30	8.0 oz.	Standard	Right

- 9 double-shielded stainless steel ball bearings
- One-way clutch instant anti-reverse bearing
- Smooth multi-disc main gear applied drag system with audible star adjustment
- Titanium line guide
- Six-pin adjustable centrifugal brake system
- Lightweight one-piece graphite frame and sideplates
- Machined, ported and anodized aluminum spool
- Sturdy aluminum handle with soft-touch knobs
- High speed 7.1:1 gear ratio



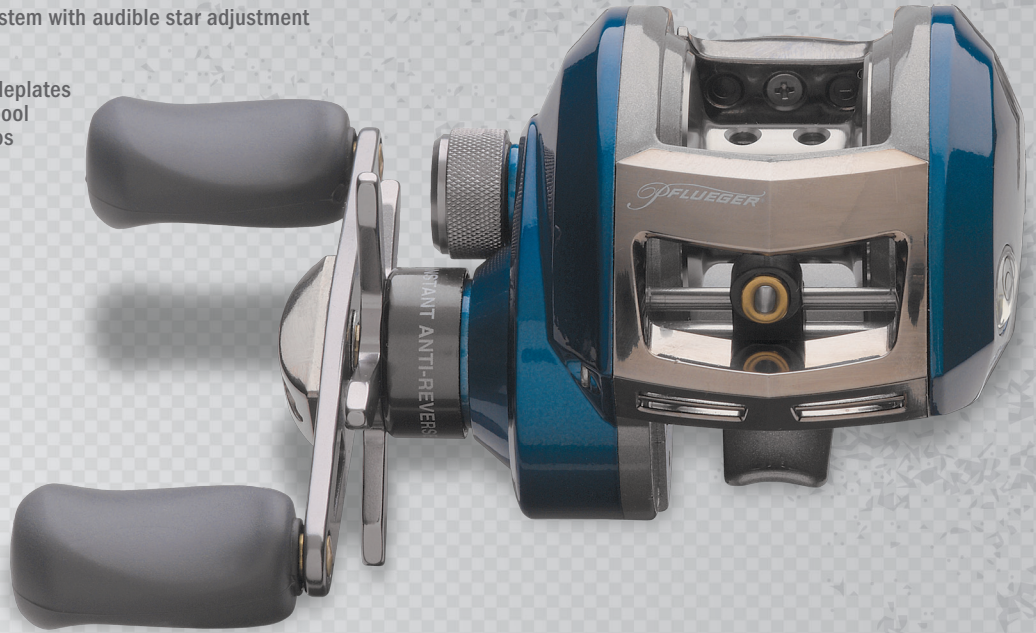
CBS

This self contained centrifugal brake design delivers consistent control for all casting situations.



Lightweight Graphite Frame

The lightweight graphite frame is 20% lighter than an aluminum frame.



Purist®



Model #	SAP #	Capacity: Mono	Capacity: Braid	Max Drag	Gear Ratio	Inches-Per-Turn	Weight	Spool Type	Hand Retrieve
PFLPURIST2LP	1153173	100 yards / 12 lb.	110 yards / 30 lb.	14 lb.	6.4:1	26	8.0 oz.	Standard	Right

- 7 double-shielded stainless steel ball bearings
- One-way clutch instant anti-reverse bearing
- Smooth multi-disc main gear applied drag system with audible star adjustment
- Six-pin adjustable centrifugal brake system
- Lightweight, one-piece graphite frame and sideplates
- Machined, ported and anodized aluminum spool
- Titanium line guide



CBS

This self contained centrifugal brake design delivers consistent control for all casting situations.



Echelon™



**MAGNETIC
BRAKING SYSTEM**

**GRAPHITE
FRAME**



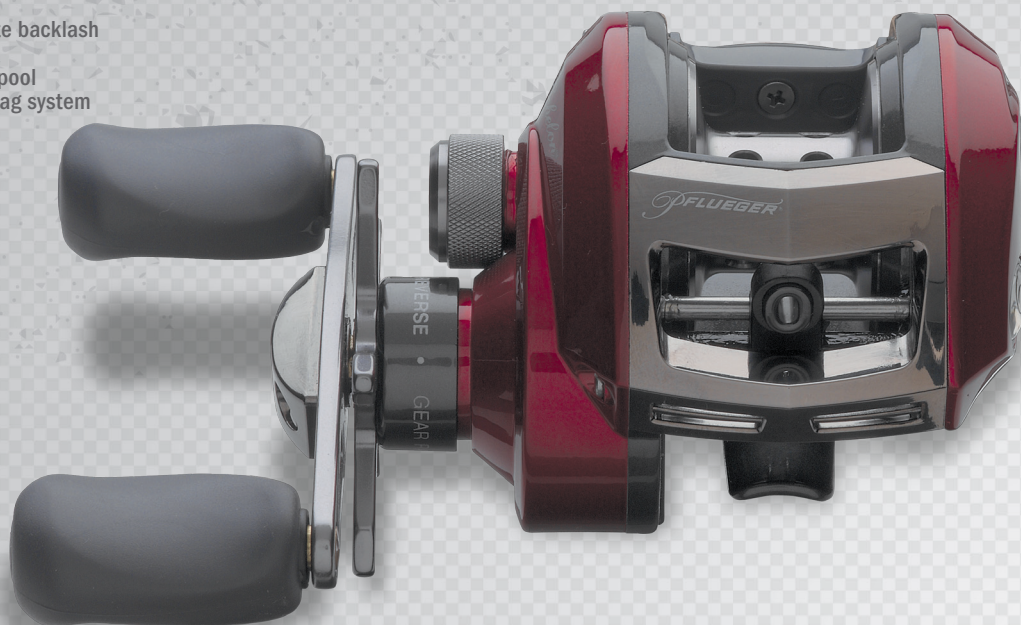
Model #	SAP #	Capacity: Mono	Capacity: Braid	Max Drag	Gear Ratio	Inches-Per-Turn	Weight	Spool Type	Hand Retrieve
PFLCHELON4LP	1185307	100 yards / 12 lb.	110 yards / 30 lb.	14 lb.	6.4:1	29	8.0 oz.	Standard	Right

- 5 double-shielded stainless steel ball bearings
- One-way clutch instant anti-reverse bearing
- Adjustable magnetic cast control to eliminate backlash
- Reinforced graphite frame and sideplates
- Machined, ported and anodized aluminum spool
- Smooth multi-disc main gear applied star drag system
- Dual soft touch knobs



MBS

The Magnetic Braking System contains 5 brakes that apply variable magnetic force to deliver long, accurate casts.



Criterion®



**MAGNETIC
BRAKING SYSTEM**

**GRAPHITE
FRAME**



Model #	SAP #	Capacity: Mono	Capacity: Braid	Max Drag	Gear Ratio	Inches-Per-Turn	Weight	Spool Type	Hand Retrieve
PFLCRIT02LP	1185306	100 yards / 12 lb.	110 yards / 30 lb.	14 lb.	6.2:1	28	7.7 oz.	Standard	Right

- 4 double shielded stainless steel ball bearings
- One-way clutch instant anti-reverse bearing
- Smooth multi-disc main gear applied drag system with audible star adjustment
- Adjustable magnetic cast control to eliminate backlash
- Lightweight, one-piece graphite frame
- Machined, ported and anodized aluminum spool
- Dual soft touch knobs

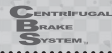


MBS

The Magnetic Braking System contains 5 brakes that apply variable magnetic force to deliver long, accurate casts.



Purist®



IM-8 GRAPHITE

Model #	SAP #	Action	Length	Pieces	Lure Weight	Reel	Capacity: Mono
PFLPURLPMCBO	1150789	Medium	6'6"	1	3/8 - 5/8 oz.	PFLPURIST2LP	100 yards / 12 lb.
PFLPURLPMHCB	1150790	Medium Heavy	6'6"	1	1/4 - 3/4 oz.	PFLPURIST2LP	100 yards / 12 lb.



PURIST GRAPHITE COMBO ROD

- 6'6" one-piece IM-8 graphite rod with split grip cork handles
- Stainless steel frame and inserts
- Touch-Through reel seat with cushioned stainless steel hood

Echelon™



HIGH MODULUS GRAPHITE RODS

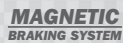
Model #	SAP #	Action	Length	Pieces	Lure Weight	Reel	Capacity: Mono
PFLECH2LPMCBO	1186232	Medium	6'6"	1	3/8 - 5/8 oz.	PFLECHELON4LP*	100 yards / 12 lb.
PFLECH2LPMHCB	1186233	Medium Heavy	6'6"	1	1/4 - 3/4 oz.	PFLECHELON4LP*	100 yards / 12 lb.



ECHELON GRAPHITE COMBO ROD

- 6'6" one-piece HM-45 graphite rod with split grip cork handles
- Stainless steel frame with aluminum oxide inserts
- Touch-Through reel seat with cushioned stainless steel hood

Criterion®



IM-8 GRAPHITE

Model #	SAP #	Action	Length	Pieces	Lure Weight	Reel	Capacity: Mono
PFLCRIT2LPCBO	1150777	Medium	6'6"	1	3/8 - 5/8 oz.	PFLCRIT02LP*	100 yards / 12 lb.



CRITERION GRAPHITE COMBO ROD

- 6'6" one-piece medium action rod
- Touch-Through reel seat with cushioned stainless steel hood
- IM-8 graphite construction and top grade cork handle

Endeavor™



IM-7 GRAPHITE

Model #	SAP #	Action	Length	Pieces	Lure Weight	Reel	Capacity: Mono	Capacity: Braid	Max Drag	Gear Ratio	Inches-Per-Turn
PFLEND2LPCBO	1205858	Medium	6'6"	1	3/8 - 5/8 oz.	LP	100 yards / 12 lb.	110 yards / 30 lb.	14 lb.	6.2:1	28

- 3 stainless steel ball bearings
- One-way clutch instant anti-reverse bearing
- Machined, ported, and anodized aluminum spool
- Adjustable magnetic anti-backlash control
- IM-7 graphite for lighter weight and increased sensitivity and castability
- Durable doubled-bridged stainless steel framed guides with aluminum oxide inserts
- Top grade cork handle for comfortable grip



* These combo reels have different color than the stand alone reel

Cetina™ALUMINUM
FRAMECARBON
DRAG

Model #	SAP #	Capacity: Mono	Gear Ratio	Weight
PFLCETINASC4	1150773 Box	70 yards / 4 lb.	4.1:1	6.0 oz.
PFLCETINASC6	1150077 Box	90 yards / 6 lb.	3.4:1	8.3 oz.
PFLCETINASC10	1150075 Box	75 yards / 10 lb.	3.8:1	10.7 oz.
PFLCETINASC4U	1150772 Box	70 yards / 4 lb.	4.1:1	6.3 oz.
PFLCETINASC6U	1150776 Box	90 yards / 6 lb.	3.4:1	8.4 oz.

- 4 ball bearings
- One-way clutch instant anti-reverse bearing
- Quick release spool design
- Aluminum frame with machined aluminum front cone
- Titanium coated line guide and dual pick-up pins (only on PFLCETINASC6, PFLCETINASC10, & PFLCETINASC6U)
- Smooth carbon fiber drag system
- Heavy-duty metal gears
- Spare Aluminum Spool
- Pre-spooled with line

*Trion®*GRAPHITE
FRAME

Model #	SAP #	Capacity: Mono	Gear Ratio	Weight
4410C	1150079 Box	70 yards / 4 lb.	4.1:1	5.2 oz.
PFL1810SC	1161085 Clam	75 yards / 10 lb.	3.8:1	10.1 oz.
4410U	1150195 Box / 1150194 Clam	70 yards / 4 lb.	4.1:1	5.5 oz.
PFL1806USPIN	1150189 Clam	90 yards / 6 lb.	3.4:1	7.6 oz.
PFL1810USPIN	1150191 Clam	75 yards / 10 lb.	3.8:1	10.1 oz.

- 4 ball bearings
- Titanium coated line guide and dual pickup pins (only on PFL1810SC & PFL1810USPIN)
- Stainless steel front cone and rear cover
- Spool applied, adjustable disc-drag system
- Left/right retrieve with machined aluminum handle and rosewood knob
- Pre-spooled with line



Cetina™



ALUMINUM FRAME

CARBON DRAG



IM-6 GRAPHITE

Model #	SAP #	Action	Length	Pieces	Lure Weight	Reel	Capacity: Mono
PFLCETINASC10CB	1147396	Medium	6'0"	2	3/8 - 5/8 oz.	PFLCETINASC10	75 yards / 10 lb.

CETINA GRAPHITE COMBO ROD

- IM-6 graphite construction
- Stainless steel frames and guides
- Top grade cork handles
- Lightweight graphite reel seat



Trion®



GRAPHITE FRAME

IM-6 GRAPHITE

Model #	SAP #	Action	Length	Pieces	Lure Weight	Reel	Capacity: Mono
PFL4410CCBO	1147430	Ultralight	4'6"	1	1/32 - 3/16 oz.	4410C	70 yards / 4 lb.
PFLMICROUCBO	1147418	Ultralight	4'6"	1	1/32 - 3/16 oz.	4410U	70 yards / 4 lb.
PFL1806USPINCBO	1147428	Light	5'6"	2	1/16 - 3/8 oz.	PFL1806USPIN	90 yards / 6 lb.
PFL1810USPINCBO	1147429	Light	6'6"	2	1/16 - 3/8 oz.	PFL1810USPIN	75 yards / 10 lb.

TRION GRAPHITE COMBO ROD

- IM-6 graphite construction
- Top grade cork handles
- Lightweight graphite reel seat





A proud supporter of the
AMERICAN BREAST CANCER FOUNDATION®

The American Breast Cancer Foundation (ABCF) is the national 501(c)(3) nonprofit committed to providing uninsured and underinsured individuals direct financial assistance for diagnostic tests to aid in the early diagnosis, treatment and survival of breast cancer. More information is available at www.abcf.org

Lady Trion™

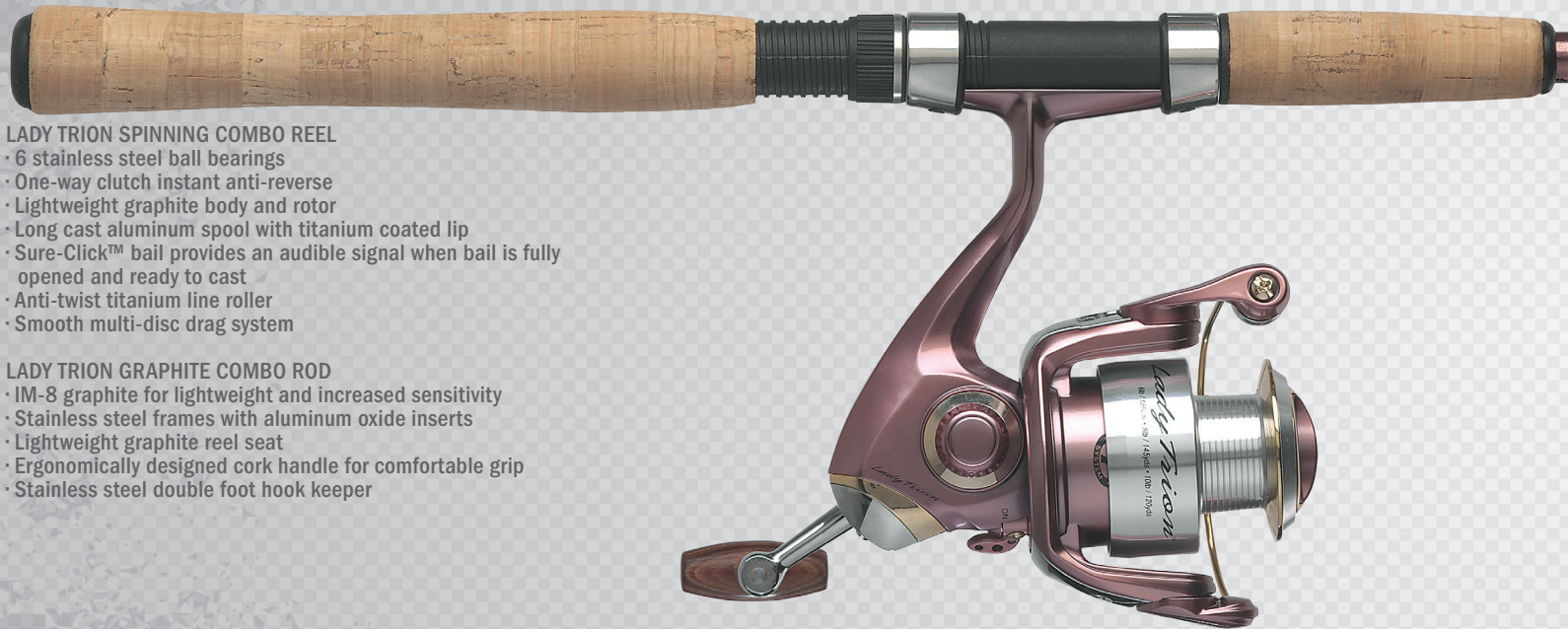
Model #	SAP #	Action	Length	Pieces	Reel	Capacity: Mono	Capacity: Braid	Max Drag	Gear Ratio	Inches-Per-Turn
PFLTRIONL66CB0	1147192	Medium	6'6"	1	30 Size	115 yards / 6 lb.	150 yards / 8 lb.	9 lb.	5.2:1	25.2
PFLTRIONL662CB0	1153005	Medium	6'6"	2	30 Size	115 yards / 6 lb.	150 yards / 8 lb.	9 lb.	5.2:1	25.2
PFLTRIONL610CB0	1150785	Medium	6'10"	1	35 Size	145 yards / 8 lb.	200 yards / 10 lb.	10 lb.	5.2:1	27.4



GRAPHITE BODY



IM-8 GRAPHITE



LADY TRION SPINNING COMBO REEL

- 6 stainless steel ball bearings
- One-way clutch instant anti-reverse
- Lightweight graphite body and rotor
- Long cast aluminum spool with titanium coated lip
- Sure-Click™ bail provides an audible signal when bail is fully opened and ready to cast
- Anti-twist titanium line roller
- Smooth multi-disc drag system

LADY TRION GRAPHITE COMBO ROD

- IM-8 graphite for lightweight and increased sensitivity
- Stainless steel frames with aluminum oxide inserts
- Lightweight graphite reel seat
- Ergonomically designed cork handle for comfortable grip
- Stainless steel double foot hook keeper

Lady Trion™

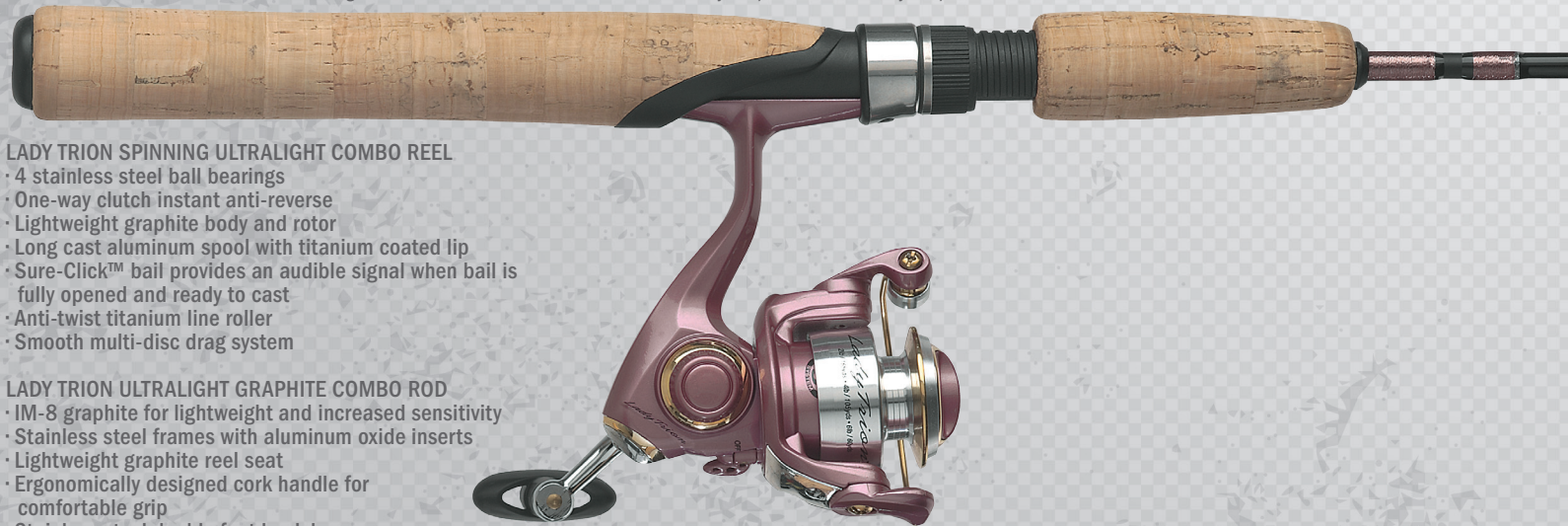
Model #	SAP #	Action	Length	Pieces	Reel	Capacity: Mono	Capacity: Braid	Max Drag	Gear Ratio	Inches-Per-Turn
PFLTRIONL48CB0	1150791	Ultralight	4'8"	1	20 Size	105 yards / 4 lb.	135 yards / 6 lb.	6 lb.	5.2:1	20.7



GRAPHITE BODY



IM-8 GRAPHITE



LADY TRION SPINNING ULTRALIGHT COMBO REEL

- 4 stainless steel ball bearings
- One-way clutch instant anti-reverse
- Lightweight graphite body and rotor
- Long cast aluminum spool with titanium coated lip
- Sure-Click™ bail provides an audible signal when bail is fully opened and ready to cast
- Anti-twist titanium line roller
- Smooth multi-disc drag system

LADY TRION ULTRALIGHT GRAPHITE COMBO ROD

- IM-8 graphite for lightweight and increased sensitivity
- Stainless steel frames with aluminum oxide inserts
- Lightweight graphite reel seat
- Ergonomically designed cork handle for comfortable grip
- Stainless steel double foot hook keeper

Lady Endeavor™



MAGNETIC BRAKING SYSTEM

GRAPHITE FRAME



IM-7 GRAPHITE

Model #	SAP #	Action	Length	Pieces	Reel	Capacity: Mono	Max Drag	Gear Ratio	Inches-Per-Turn
PFLENDLLPCB0	1152449	Medium	6'3"	1	LP	100 yards / 12 lb.	14 lb.	6.3:1	28

LADY ENDEAVOR BAITCAST COMBO REEL

- 3 stainless steel ball bearings
- One-way clutch instant anti-reverse
- Reinforced graphite frame and sideplates
- Machined, ported, and anodized aluminum spool
- Adjustable magnetic anti-backlash control
- Titanium line guide
- Main gear applied star drag system
- Soft touch thumb bar spool release

LADY ENDEAVOR GRAPHITE COMBO ROD

- IM-7 graphite for lightweight & increased sensitivity
- Stainless steel guides and inserts
- Lightweight graphite reel seat
- Ergonomically designed cork handle for comfortable grip
- Hook keeper



Lady Trion™



GRAPHITE FRAME

IM-8 GRAPHITE

Model #	SAP #	Action	Length	Pieces	Reel	Capacity: Mono	Gear Ratio
PFLTRIONLSC6CB0	1150784	Medium Light	5'3"	1	6 Size	90 yards / 6 lb.	3.4:1

LADY TRION SPINCAST COMBO REEL

- 4 ball bearings
- Stainless steel front cone
- Titanium coated line guide and pick-up pins
- Smooth adjustable disc drag system
- Heavy-duty metal gears
- Pre-spooled with 6 Lb. test line

LADY TRION GRAPHITE COMBO ROD

- IM-8 graphite for lightweight & increased sensitivity
- Stainless steel guides and inserts
- Lightweight graphite reel seat
- Ergonomically designed cork handle for comfortable grip
- Hook keeper



Lady Trion™



GRAPHITE FRAME

IM-8 GRAPHITE

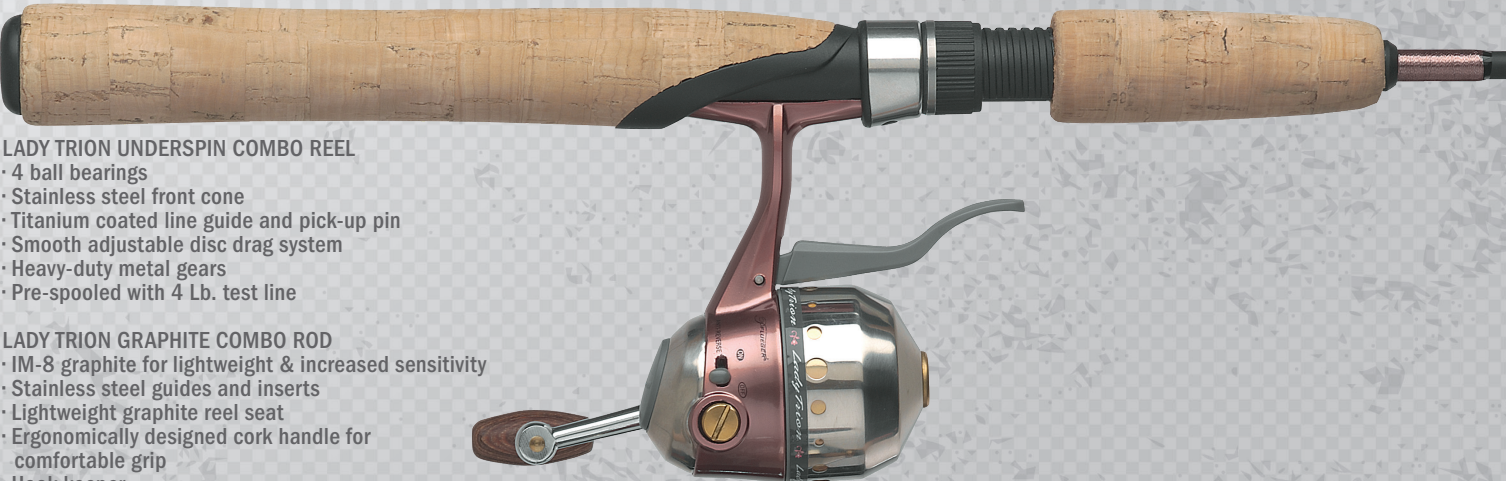
Model #	SAP #	Action	Length	Pieces	Reel	Capacity: Mono	Gear Ratio
PFLTRIONLSC4UCB	1150783	Ultralight	4'8"	1	4 Size	70 yards / 4 lb.	4.1:1

LADY TRION UNDERSPIN COMBO REEL

- 4 ball bearings
- Stainless steel front cone
- Titanium coated line guide and pick-up pin
- Smooth adjustable disc drag system
- Heavy-duty metal gears
- Pre-spooled with 4 Lb. test line

LADY TRION GRAPHITE COMBO ROD

- IM-8 graphite for lightweight & increased sensitivity
- Stainless steel guides and inserts
- Lightweight graphite reel seat
- Ergonomically designed cork handle for comfortable grip
- Hook keeper



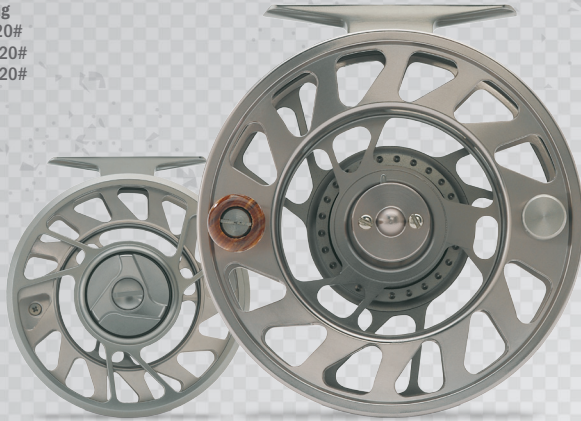
President®



Model #	SAP #	Spool Diameter	Spool Width	Weight	Fly Line	Fly Backing
2056	1150022	3 1/2"	31/32"	5.8 oz.	Up to #6	70 yards / 20#
2078	1150023	3 3/4"	31/32"	6.3 oz.	Up to #8	120 yards / 20#
2090	1150024	4 1/4"	1 5/16"	6.6 oz.	Up to #10	250 yards / 20#

Fly Line and backing are based on using a WF floating line.

- Large arbor spool design
- Forged, machined and anodized aluminum frame and spool
- Oversized ball bearing and one-way clutch bearing
- Center-disc drag system for total drag control
- Convertible left/right hand retrieve
- Large rosewood knob
- Easy-release spool switch
- Protective storage bag included



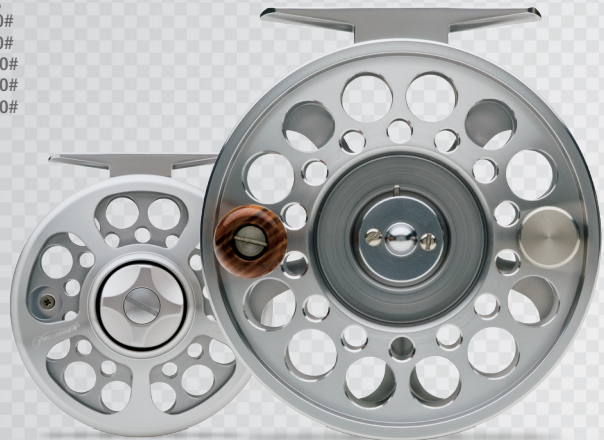
Trion®



Model #	SAP #	Spool Diameter	Spool Width	Weight	Fly Line	Fly Backing
1934	1150016	3"	15/16"	5.9 oz.	Up to #4	60 yards / 20#
1956	1150017	3 1/4"	15/16"	6.1 oz.	Up to #6	70 yards / 20#
1978	1150018	3 1/2"	15/16"	6.6 oz.	Up to #8	120 yards / 20#
1990	1150019	3 3/4"	15/16"	6.9 oz.	Up to #10	120 yards / 20#
1912	1150015	4 1/8"	1 1/4"	7.8 oz.	Up to #12	250 yards / 20#

Fly Line and backing are based on using a WF floating line.

- Forged, machined and anodized aluminum frame and spool
- Mid arbor spool design
- Oversized ball bearing and one-way clutch bearing
- Center-disc drag system for total drag control
- Convertible left/right hand retrieve
- Large rosewood knob
- Easy-release spool switch
- Protective storage bag included



Purist®

Model #	SAP #	Spool Diameter	Spool Width	Weight	Fly Line	Fly Backing
1394	1149989	2 5/8"	25/32"	4.4 oz.	Up to #7	30 yards / 20#

Fly Line and backing are based on using a WF floating line.

- Complete Fly Reel
- Aluminum frame with brass pillars with non-reflective black finish
 - Exposed aluminum rim control spool for extra control
 - Push button quick-release spool
 - Adjustable click drag system and rim control spool
 - Pre-spooled with 20# Dacron backing, 6 wt. level fly line, and 4x tapered leader (assorted flies included)

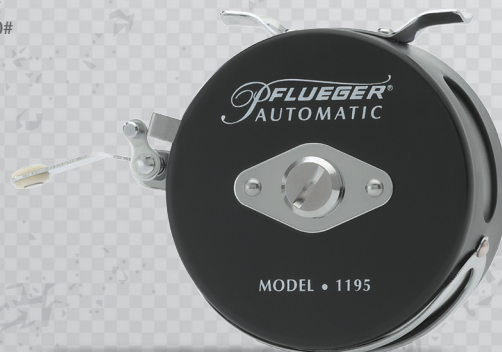


AUTOMATIC

Model #	SAP #	Spool Diameter	Spool Width	Weight	Fly Line	Fly Backing
1195	1149988 Box / 1149987 Clam	2 7/8"	7/8"	9.0 oz.	Up to #8	50 yards / 20#

Fly Line and backing are based on using a WF floating line.

- Aluminum alloy frame and spool
- Stainless steel main spring
- Stainless steel foot and line guard
- Main spring release and fold down trigger for easy storage



Medalist®

- Three piece 5/6 weight fly rod with cork grip
- Medalist 1494 metal fly reel
- 30 yards of weight forward fly line
- 4X tapered leader
- Braided dacron backing

Model #
PFYMED90KIT2

SAP#
1150788

Rod Length
9'0"

Pieces
3

Rod Weight
#5/6

Guides
7 + Tip

Spool Diameter
2 11/16"

Spool Width
13/16"

Reel Weight
5.4 oz.

Fly Line
Up to #7

Fly Backing
50 yards / 20#



9' FLY ROD

This Complete Fishing Kit Contains Everything You Will Need To Start Fly Fishing Today!

- 1494 Medalist Fly Reel With Adjustable Drag
- 9' 3-Piece #5/6 Weight Rod
- 30 Yards of 6 WT. Weight Forward Fly Line
- 50 Yards of 20 Lb. Backing
- 7'6" 4X Tapered Leader
- Knot Tying Guide

PFY KIT 2

- 8' three piece 5/6 weight fly rod with cork grip
- 1094 metal rim control fly reel
- 25 yards of level fly line
- 4X tapered leader
- Braided dacron backing
- Fly assortment

Model #
PFYKIT2

SAP#
1150786

Rod Length
8'0"

Pieces
3

Rod Weight
#5/6

Guides
6 + Tip

Spool Diameter
2 5/8"

Spool Width
25/32"

Reel Weight
4.4 oz.

Fly Line
Up to #7

Fly Backing
30 yards / 20#



8' FLY ROD

This Complete Fishing Kit Contains Everything You Will Need To Start Fly Fishing Today!

- Single-Action Fly Reel
- 8' 3-Piece #5/6 Weight Fly Rod
- 25 Yards of 6 WT. Fly Line
- 50 Yards of 20 Lb. Backing
- 7'6" 4X Tapered Leader