

SANTA BARBARA™
MONTECITO™



Stanley
FURNITURE

SANTA BARBARA™ MONTECITO™

SWEEPING VISTAS and picturesque communities are the inspiration for the Montecito and Santa Barbara collections. Engage all your senses with these traditionally inspired designs that reflect the heart of the area known as the American Riviera, blended with the warm appeal of Mediterranean styling.

Relish the generous scale and luxurious appeal of Montecito and Santa Barbara, all the while embracing an attitude of relaxed comfort. From the highly distressed finish on aged maple to accents that include marble, leather, sumptuous fabrics, scrolled iron and etched brass, the collections are imbued with an air of distinction. Tap into the rich patinas



on every exquisite design that evoke the timeworn beauty of handcrafted furniture. Montecito and Santa Barbara command attention, right down to their finishing details. The hammered metal hardware is warmed with copper undertones to lend that final, special touch to doors and drawers. Overall, the effect is one of good taste and a testament to your own personal, style statement.

Best of all, because Stanley Furniture builds exceptional quality into Montecito and Santa Barbara at every step of the furniture making process, you can be sure the selections you make today will remain a treasured part of your life for years to come.

Stanley
FURNITURE







796-11-36
Grande Balustrade Double Pedestal Dining Table
Dark Woodtone finish
(details p. 22)



796-11-65
Upholstered Side Chair
Dark Woodtone finish
(details p. 23)



796-11-75
Upholstered Arm Chair
Dark Woodtone finish
(details p. 23)

China no longer available.





461-11-38
Celebration Table
 Medium Woodtone finish
 (details p. 22)



461-11-60
Wood/Upholstered Side Chair
 Medium Woodtone finish
 (details p. 23)



461-11-70
Wood/Upholstered Arm Chair
 Medium Woodtone finish
 (details p. 23)



796-11-61
Barley Twist Leg Side Chair
 Dark Woodtone finish
 (details p. 23)



796-11-71
Barley Twist Leg Arm Chair
 Dark Woodtone finish
 (details p. 23)



461-11-05
Buffet
 Medium Woodtone finish
 (details p. 22)





796-11-60
Wood/Upholstered Side Chair
Dark Woodtone finish
(details p. 23)



796-11-70
Wood/Upholstered Arm Chair
Dark Woodtone finish
(details p. 23)



796-11-38
Celebration Table
Dark Woodtone finish
(details p. 22)



796-13-30
Iron Shop Mirror
(details p. 24)



796-11-06
Sideboard, Marble Top
Dark Woodtone finish
(details p. 22)





796-13-16
Bachelor's Chest
Dark Woodtone finish
(details p. 24)



796-13-46
Cabrillo Panel Bed
Dark Woodtone finish
(details p. 25)



796-13-34
Grande Salon Floor Mirror
Dark Woodtone finish
(details p. 24)



ROOMS TO REMEMBER
CLASSICISM THE HISTORY OF TRADITIONAL INTERIOR DESIGN



796-13-80
Bedside Chest
Dark Woodtone finish
(details p. 24)



796-13-45
Montecito Iron Bed
Dark Woodtone finish
(details p. 25)



461-13-72
Bed End Bench
Medium Woodtone finish
(details p. 24)





461-13-59
Carriage House Leather Bed
 (details p. 25)



461-13-82
Bedside Table
 Medium Woodtone finish
 (details p. 24)



796-13-30
Iron Shop Mirror
 (details p. 24)



796-13-05
Dresser
 Dark Woodtone finish
 (details p. 24)



796-13-06
Judge Walker's Dressing Chest
 Dark Woodtone finish
 (details p. 24)

Seville Faceted Chest no longer available.





Paneled Armoire

Shown open and accessorized with clothes and linens. Our Paneled Armoire offers an abundance of functional storage space while reflecting charm and elegance. The beautifully crafted upper panel doors open to reveal two removable shirt partitions with an adjustable shelf, one electrical outlet and one cord hole. Its mid-section features five drawers with liners, and its base provides three tray drawers and an adjustable shelf behind two doors.



Paneled Armoire

Shown open and accessorized with TV.



461-13-17
Bachelor's Chest, Marble Top
 Medium Woodtone finish
 (details p. 24)



461-13-14
Paneled Armoire
 Medium Woodtone finish
 (details p. 24)





796-15-25
El Charro Bar, Marble Top
Dark Woodtone finish
(details p. 26)



796-15-73
Bar Stool
Dark Woodtone finish
(details p. 26)



796-11-72
Counter Stool
Dark Woodtone finish
(details p. 23)

Open Range Credenza Deck and Open Range China Base no longer available.





796-15-01
California Cocktail Table
Dark Woodtone finish
(details p. 26)



461-15-15
Octagonal Lamp Table
Medium Woodtone finish
(details p. 26)



796-15-03
Gallery Cocktail Table
Dark Woodtone finish
(details p. 26)



796-15-10
Barley Twist End Table
Dark Woodtone finish
(details p. 26)



461-15-02
Balustrade Cocktail Table
Medium Woodtone finish
(details p. 26)



461-15-14
Round Balustrade Table
Medium Woodtone finish
(details p. 26)

461-13-30
Iron Shop Mirror
(details p. 26)



461-15-06
Grande Foyer Console, Marble Top
Medium Woodtone finish
(details p. 26)



461-15-05
Sofa/Console Table
Medium Woodtone finish
(details p. 26)



461-17-32
Television Console
Medium Woodtone finish
(details p. 27)



461-17-31
Entertainment Console
Medium Woodtone finish
(details p. 27)



796-17-32
Television Console
Medium Woodtone finish
(details p. 27)



796-17-34
Entertainment Console
Dark Woodtone finish
(details p. 27)

finish / wood characteristics and hardware



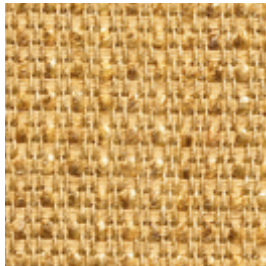
SANTA BARBARA AND MONTECITO'S finishes boast liberal distressing of aged maple with a rich patina that evokes the look of hand-rubbed finishing. Drawers and doors are accented by hammered brass hardware with warm honey and copper undertones to complete the hand crafted appearance.



fabrics and surfaces



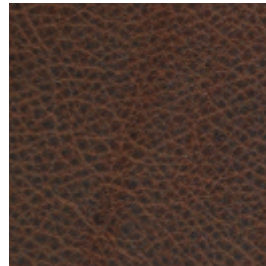
BOMBAY NIGHTS



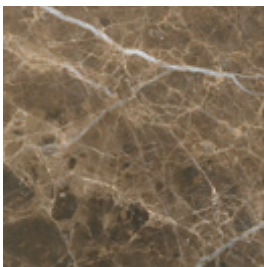
TRUSTED



MARIETTA BLACK
PEPPER



BONZANZA MESA
LEATHER



Each piece of natural marble used in Santa Barbara and Montecito is unique. The characteristic swirls, vein lines and pattern variations are due to mineral impurities originally present in the limestone and also give marble its color. Consequently your marble will not be identical in color to the piece shown here. In addition, structural variations of the stone's crystallization cause what appear to be hairline cracks. Like the color variations, the structural variations are not a defect, but an important part of any marble's unique character.

461-11 Medium Woodtone, 796-11 Dark Woodtone Maple and select hardwood solids; maple veneers; simulated wood components on select items

- 36 GRANDE BALUSTRADE
DOUBLE PEDESTAL DINING
TABLE

Consists of:

- 136 TABLE TOP

- 236 PEDESTAL TABLE BASE

Bottom of apron to floor: 26H (66 cm)

Two 20" leaves included; additional

leaves not available 20L (51 cm)

Overall: 86 1/2W 48D 30 3/16H

(220 x 122 x 77 cm)

Overall dimensions with leaves:

126 1/2W 48D 30 3/16H

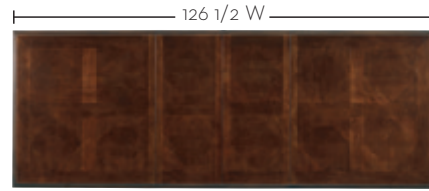
(321 x 122 x 77 cm)

Available in Medium Woodtone
and Dark Woodtone finishes

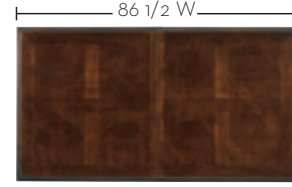
SEE PAGES 2, 3



- 36 GRANDE BALUSTRADE
DOUBLE PEDESTAL DINING TABLE
with two 20" leaves



- 36 GRANDE BALUSTRADE
DOUBLE PEDESTAL DINING TABLE
with two 20" leaves



- 38 CELEBRATION TABLE

Consists of:

- 138 TABLE TOP

- 238 TABLE BASE

Four perimeter leaves increase diameter to

82 1/16" (208 cm)

Additional leaves not available

Bottom of apron to floor: 25 5/8H (65 cm)

Overall: 64 Diameter 30H

(163 x 76 cm)

Available in Medium Woodtone
and Dark Woodtone finishes

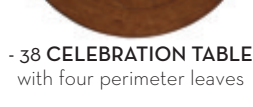
SEE PAGES 1, 4, 5, 6, 7

64 Diameter

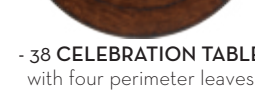
82 1/16 Diameter

64 Diameter

82 1/16 Diameter



- 38 CELEBRATION TABLE
with four perimeter leaves



- 38 CELEBRATION TABLE
with four perimeter leaves



- 05 BUFFET

Five drawers with felt liners, four doors,

one adjustable shelf behind each door,

adjustable glides

79 7/8W 21 1/8D 43 7/8H

(203 x 54 x 111 cm)

Available in Medium Woodtone
and Dark Woodtone finishes

SEE PAGE 5



- 06 SIDEBOARD, MARBLE TOP

Consists of:

- 106 MARBLE TOP

Dark Emperador marble with antique finish

- 206 BASE

Three drawers with felt liners, one

stationary shelf

Overall: 65 15/16W 20 1/2D 39 7/8H

(167 x 52 x 101 cm)

Available in Medium Woodtone
and Dark Woodtone finishes

SEE PAGES 1, 6, 7



- 61 BARLEY TWIST LEG SIDE CHAIR
 Super Comfort™ seat, Bonanza Mesa leather
 Seat: 21 13/16W 19D 19 1/4H (55 x 48 x 49 cm)
 Overall: 22 3/8W 26 1/4D 41 3/16H
 (57 x 67 x 105 cm)

*Available in Medium Woodtone
 and Dark Woodtone finishes*

SEE PAGE 5



- 71 BARLEY TWIST LEG ARM CHAIR
 Super Comfort™ seat, Bonanza Mesa leather
 Seat: 22 1/2W 19D 19 1/4H (57 x 48 x 49 cm)
 Arm: 25 1/16H (64 cm)
 Overall: 24 13/16W 26 1/4D 41 3/16H
 (63 x 67 x 105 cm)

*Available in Medium Woodtone
 and Dark Woodtone finishes*

SEE PAGE 5



- 72 COUNTER STOOL
 Super Comfort™ seat, Bonanza Mesa leather
 Seat: 20 1/16W 16 5/8D 24H (51 x 42 x 61 cm)
 Arm: 30 3/4H (78 cm)
 Overall: 26 7/8W 24 1/4D 38 3/4H
 (68 x 62 x 98 cm)

*Available in Medium Woodtone
 and Dark Woodtone finishes*

SEE PAGE 17



- 65 UPHOLSTERED SIDE CHAIR
 Super Comfort™ seat, Marietta Black
 Pepper fabric, treated for soil resistance
 Seat: 22 3/8W 19 D 19H (57 x 48 x 48 cm)
 Overall: 22 3/8W 26 15/16D 48 7/16H
 (57 x 68 x 123 cm)

Available in Dark Woodtone finish only

SEE PAGES 2, 3



- 75 UPHOLSTERED ARM CHAIR
 Super Comfort™ seat, Marietta Black
 Pepper fabric, treated for soil resistance
 Seat: 25W 19 9/16D 19H (64 x 50 x 48 cm)
 Arm: 25 1/16H (64 cm)
 Overall: 27 1/8W 28 5/16D 48 3/4H
 (69 x 72 x 124 cm)

*Available in Medium Woodtone
 and Dark Woodtone finishes*

SEE PAGES 2, 3



- 73 BAR STOOL
 Super Comfort™ seat, Bonanza Mesa leather
 Seat: 20 1/16W 16 5/8D 30H (51 x 42 x 76 cm)
 Arm: 36 3/4H (93 cm)
 Overall: 26 7/8W 24 1/4D 44 3/4H
 (68 x 62 x 114 cm)

*Available in Medium Woodtone
 and Dark Woodtone finishes*

SEE PAGES 16, 17



- 70 WOOD/UPHOLSTERED ARM CHAIR
 Super Comfort™ seat, Bonanza Mesa
 leather on seat; Bombay Nights and
 Trusted fabrics, treated for soil resistance
 Seat: 22 1/16W 18 1/2D 19H (56 x 47 x 48 cm)
 Arm: 25H (64 cm)
 Overall: 26 9/16W 26 1/4D 45 5/8H
 (67 x 67 x 116 cm)

*Available in Medium Woodtone
 and Dark Woodtone finishes*

SEE PAGES 5, 7



- 60 WOOD/UPHOLSTERED SIDE CHAIR
 Super Comfort™ seat, Bonanza Mesa
 leather on seat; Bombay Nights and
 Trusted fabrics, treated for soil resistance
 Seat: 21 1/16W 18D 19H (54 x 46 x 48 cm)
 Overall: 21 7/16W 25 3/4D 45 5/8H
 (54 x 65 x 116 cm)

*Available in Medium Woodtone
 and Dark Woodtone finishes*

SEE PAGES 1, 4, 5, 6, 7

461-13 Medium Woodtone, 796-13 Dark Woodtone Maple and select hardwood solids; maple veneers; simulated wood components on select items



- 14 **PANELED ARMOIRE**

Consists of:

- 114 **ARMOIRE DECK**

56 1/2W 23 1/2D 54 11/16H (144 x 60 x 139 cm)

- 214 **ARMOIRE BASE**

55 1/4W 22 7/8D 31 15/16H (140 x 58 x 81 cm)

Deck: two doors wrap 270 degrees, five drawers with liners

Behind upper doors: two removable shirt partitions, one adjustable shelf, one electrical outlet, one cord hole

Base: two doors, three tray drawers, one adjustable shelf, adjustable glides
TV area: 46 5/8W 17 3/4D 34 5/8H (118 x 45 x 88 cm)

Overall: 56 1/2W 23 1/2D 86 5/8H (144 x 60 x 220 cm)

Available in Medium Woodtone finish only

SEE PAGE 15



- 17 **BACHELOR'S CHEST, MARBLE TOP**

Consists of:

- 117 **MARBLE TOP**

Dark Emperador marble with antique finish

- 217 **BASE**

Six drawers

Overall: 38 1/2W 19 3/8D 36 1/4H (98 x 49 x 92 cm)

Available in Medium Woodtone and Dark Woodtone finishes

SEE PAGES 14, 15



- 16 **BACHELOR'S CHEST**

Six drawers

38 1/2W 19 3/8D 36 1/4H (98 x 49 x 92 cm)

Available in Medium Woodtone and Dark Woodtone finishes

SEE PAGES 8, 9



- 06 **JUDGE WALKER'S DRESSING CHEST**

Twelve drawers, two felt liners, two doors, one adjustable shelf behind each door, adjustable glides
69 1/2W 22D 50 3/4H (177 x 56 x 129 cm)

Available in Medium Woodtone and Dark Woodtone finishes

SEE PAGE 13



- 05 **DRESSER**

Thirteen drawers, felt liner in two small center drawers
71W 21D 43 1/2H (180 x 53 x 110 cm)

Available in Medium Woodtone and Dark Woodtone finishes

SEE PAGES 12, 13



- 30 **IRON SHOP MIRROR**

Beveled plate: 24 13/16W 34 13/16H (63 x 88 cm)

Overall: 34W 44H (86 x 112 cm)

SEE PAGES 6, 7, 12, 13, 18, 19



- 80 **BEDSIDE CHEST**

Three drawers

31 3/4W 19 3/16D 32 1/4H (81 x 49 x 82 cm)

Available in Medium Woodtone and Dark Woodtone finishes

SEE PAGES COVER, 10, 11



- 82 **BEDSIDE TABLE**

One drawer

35 1/2 Diameter 29 3/8H (90 x 75 cm)

Available in Medium Woodtone and Dark Woodtone finishes

SEE PAGES INSIDE FRONT COVER, 12, 13, 19



- 72 **BED END BENCH**

Bonanza Mesa leather

54W 18 1/2D 19 3/8H (137 x 47 x 49 cm)

Available in Medium Woodtone finish only

SEE PAGES COVER, 10, 11



- 34 **GRANDE SALON FLOOR MIRROR**

Two pads on bottom

Beveled plate: 30 3/4W 75 3/4H (78 x 192 cm)

Overall: 45W 90H (114 x 229 cm)

Available in Medium Woodtone and Dark Woodtone finishes

SEE PAGES 8, 9



- 40 MONTECITO IRON BED 5/0 QUEEN

Consists of:

- 140 METAL HEADBOARD 5/0
67 3/8W 74H (171 x 188 cm)
- 240 METAL FOOTBOARD 5/0
67 3/8W 43 1/4H (171 x 110 cm)
- 51 PAIR WOOD RAILS 5/0-6/6
Three slats, three center feet
7 7/8H 82L (20 x 208 cm)

Bottom of side rail to floor: 7 1/2H (19 cm)

Overall: 67 3/8W 74H 94 3/8L
(171 x 188 x 240 cm)

Available in Dark Woodtone finish only

- 44 MONTECITO IRON BED 6/0 CALIFORNIA KING

Consists of:

- 145 METAL HEADBOARD 6/0-6/6
83 1/8W 74H (211 x 188 cm)
- 245 METAL FOOTBOARD 6/0-6/6
83 1/8W 43 1/4H (211 x 110 cm)
- 58 PAIR WOOD RAILS 6/0
Three slats, three center feet
7 7/8H 86L (20 x 218 cm)

Bottom of side rail to floor: 7 1/2H (19 cm)

Overall: 83 1/8W 74H 98 3/8L
(211 x 188 x 250 cm)

Available in Medium Woodtone and Dark Woodtone finishes

- 45 MONTECITO IRON BED 6/6 KING

Consists of:

- 145 METAL HEADBOARD 6/0-6/6
83 1/8W 74H (211 x 188 cm)
- 245 METAL FOOTBOARD 6/0-6/6
83 1/8W 43 1/4H (211 x 110 cm)
- 51 PAIR WOOD RAILS 5/0-6/6
Three slats, three center feet
7 7/8H 82L (20 x 208 cm)

Bottom of side rail to floor: 7 1/2H (19 cm)

Overall: 83 1/8W 74H 94 3/8L
(211 x 188 x 240 cm)

Available in Medium Woodtone and Dark Woodtone finishes

SEE PAGES COVER 10, 11



- 57 CARRIAGE HOUSE LEATHER BED 5/0 QUEEN

Consists of:

- 157 LEATHER SLEIGH HEADBOARD 5/0
70 1/2W 57H (179 x 145 cm)
- 257 LEATHER FOOTBOARD 5/0
70 1/2W 25H (179 x 64 cm)
- 357 PAIR LEATHER RAILS 5/0
Three slats, three center feet
19 1/2H 70 1/2L (50 x 179 cm)
Chocolate leather

Bottom of side rail to floor: 6H (15 cm)

Overall: 70 1/2W 57H 105L
(179 x 145 x 267 cm)

Available in Medium Woodtone finish only

- 56 CARRIAGE HOUSE LEATHER BED 6/0 CALIFORNIA KING

Consists of:

- 156 LEATHER SLEIGH HEADBOARD 6/0
82 1/2W 57H (210 x 145 cm)
- 256 LEATHER FOOTBOARD 6/0
82 1/2W 25H (210 x 64 cm)
- 356 PAIR LEATHER RAILS 6/0
Three slats, three center feet
19 1/2H 74 1/2L (50 x 189 cm)
Chocolate leather

Bottom of side rail to floor: 6H (15 cm)

Overall: 82 1/2W 57H 109L
(210 x 145 x 277 cm)

Available in Medium Woodtone finish only

- 59 CARRIAGE HOUSE LEATHER BED 6/6 KING

Consists of:

- 159 LEATHER SLEIGH HEADBOARD 6/6
86 1/2W 57H (220 x 145 cm)
- 259 LEATHER FOOTBOARD 6/6
86 1/2W 25H (220 x 64 cm)
- 359 PAIR LEATHER RAILS 6/6
Three slats, three center feet 6/6
19 1/2H 70 1/2L (50 x 179 cm)
Chocolate leather

Bottom of side rail to floor: 6H (15 cm)

Overall: 86 1/2W 57H 105L
(220 x 145 x 267 cm)

Available in Medium Woodtone finish only

SEE PAGES 12, 13



- 47 CABRILLO PANEL BED 6/0 CALIFORNIA KING

Consists of:

- 146 PANEL HEADBOARD 6/0-6/6
86 15/16W 72 1/2H (221 x 184 cm)
- 246 PANEL FOOTBOARD 6/0-6/6
81 1/16W 33 3/16H (206 x 84 cm)
- 58 PAIR WOOD RAILS 6/0
Three slats, three center feet
7 7/8H 86L (20 x 218 cm)

Bottom of side rail to floor: 7 1/2H (19 cm)

Overall: 86 15/16W 72 1/2H 93 1/16L
(221 x 184 x 236 cm)

Available in Medium Woodtone and Dark Woodtone finishes

- 46 CABRILLO PANEL BED 6/6 KING

Consists of:

- 146 PANEL HEADBOARD 6/0-6/6
86 15/16W 72 1/2H (221 x 184 cm)
- 246 PANEL FOOTBOARD 6/0-6/6
81 1/16W 33 3/16H (206 x 84 cm)
- 51 PAIR WOOD RAILS 5/0-6/6
Three slats, three center feet
7 7/8H 82L (20 x 208 cm)

Bottom of side rail to floor: 7 1/2H (19 cm)

Overall: 86 15/16W 72 1/2H 89 1/16L
(221 x 184 x 226 cm)

Available in Medium Woodtone and Dark Woodtone finishes

SEE PAGES 8, 9

461-15 Medium Woodtone, 796-15 Dark Woodtone

Birch and select hardwood solids; maple veneers; simulated wood components on select items



- 01 CALIFORNIA COCKTAIL TABLE
59 3/8W 42D 22 1/2H (151 x 107 x 57 cm)

Available in Medium Woodtone and Dark Woodtone finishes

SEE PAGES 18, 19



- 03 GALLERY COCKTAIL TABLE
59W 31D 21 1/2H (150 x 79 x 55 cm)

Available in Medium Woodtone and Dark Woodtone finishes

SEE PAGE 19



- 10 BARLEY TWIST END TABLE
One drawer
29 1/2W 29 1/2D 28 3/16H (75 x 75 x 72 cm)

Available in Medium Woodtone and Dark Woodtone finishes

SEE PAGE 19



- 02 BALUSTRADE COCKTAIL TABLE
One stationary shelf
46W 46D 19 1/2H (117 x 117 x 50 cm)

Available in Medium Woodtone finish only

SEE PAGE 19



- 14 ROUND BALUSTRADE TABLE
One drawer
35 1/2 Diameter 29 3/8H (90 x 75 cm)

Available in Medium Woodtone and Dark Woodtone finishes

SEE PAGE 19



- 15 OCTAGONAL LAMP TABLE
One door, one stationary shelf
31 1/8W 31 1/8D 28 3/16H (79 x 79 x 72 cm)

Available in Medium Woodtone and Dark Woodtone finishes

SEE PAGE 19



- 05 SOFA/CONSOLE TABLE
Two drawers, one stationary shelf
61 5/8W 19D 33 15/16H (157 x 48 x 86 cm)

Available in Medium Woodtone and Dark Woodtone finishes

SEE PAGE 19



- 06 GRANDE FOYER CONSOLE
MARBLE TOP

Consists of:
- 106 MARBLE TOP
Dark Emperador marble with antique finish
- 206 BASE
One stationary shelf
Overall: 58 1/2W 28 1/16D 40 5/16H
(149 x 71 x 102 cm)

Available in Medium Woodtone finish only

SEE PAGES 18, 19



- 25 EL CHARRO BAR, MARBLE TOP

Consists of:
- 125 MARBLE TOP
Dark Emperador marble with antique finish
- 225 BAR BASE
Three drawers with felt liners, wine glass holders, two stationary shelves, wine bottle storage, two doors
Overall: 75 3/16W 29 1/2D 43H
(191 x 75 x 109 cm)

Available in Dark Woodtone finish only

SEE PAGES 16, 17



- 73 BAR STOOL
Super Comfort™ seat, Bonanza Mesa leather
Seat: 20 1/16W 16 5/8D 30H (51 x 42 x 76 cm)
Arm: 36 3/4H (93 cm)
Overall: 26 7/8W 24 1/4D 44 3/4H
(68 x 62 x 114 cm)

Available in Medium Woodtone and Dark Woodtone finishes

SEE PAGES 16, 17

461-17 Medium Woodtone, 796-17 Dark Woodtone Maple and select hardwood solids; maple veneers; simulated wood components on select items



- 34 ENTERTAINMENT CONSOLE

Four doors, two adjustable shelves, adjustable levelers
Behind left door: one laminated adjustable shelf, cord management opening
Behind center doors: removable veneer panel and glass panel insert, two wood veneer adjustable shelves, four plug electrical outlet with surge protection, removable back panel with cord management openings and cutouts for ventilation
Behind right door: one stationary shelf, two pullout media storage trays
Accommodates TV sizes up to 70" flat panel or micro device TV
91 7/8W 24 3/4D 28 11/16H
(233 x 63 x 73 cm)

Available in Dark Woodtone finish only

SEE PAGE 21



- 31 ENTERTAINMENT CONSOLE

Four doors, two adjustable shelves, adjustable levelers
Behind left door: one laminated adjustable shelf, cord management opening
Behind center doors: removable veneer panel and glass panel insert, two wood veneer adjustable shelves, four plug electrical outlet with surge protection, removable back panel with cord management openings and cutouts for ventilation
Behind right door: one stationary shelf, two pullout media storage trays
Accommodates TV sizes up to 70" flat panel or micro device TV
91 7/8W 22 3/4D 28 11/16H
(233 x 58 x 73 cm)

Available in Medium Woodtone finish only

SEE PAGE 20



- 32 TELEVISION CONSOLE

Four doors
Behind center doors: two wood veneer adjustable shelves, removable back panel, removable door panels with glass inserts
Behind outside doors: one laminated adjustable shelf, one pullout media storage tray, removable door panels with speaker cloth inserts
Accommodates TV sizes up to 56" flat panel or micro device TV
55 7/8W 22 3/4D 28 11/16H
(142 x 58 x 73 cm)

Available in Medium Woodtone and Dark Woodtone finishes

SEE PAGE 20



-100 INFRARED REMOTE READER

The infrared remote reader transfers your remote control signals to your audio/video components even if they are positioned behind wood panel doors, eliminating the need to insert glass panels. The infrared reader includes a receiver with mounting block, an infrared repeater control unit with power cord and three emitters. Each emitter, when properly positioned on the interior of the case, will transfer your remote control signal to the audio/video components positioned on one shelf. The system is easy to install and use. No programming is needed and the emitters may be repositioned as your audio/video components or configurations change.

Please measure your television prior to purchase to assure proper fit. Actual TV dimensions vary by manufacturer and model.

NOTE: Stanley Furniture may find it necessary to make changes to prices, colors, materials, equipment and specifications at any time or even discontinue certain items. We'll try not to, but our lawyers say we have to let you know that it could happen.

Stanley Furniture Company, Inc. • Stanleytown, VA 24168 • stanleyfurniture.com

Stanley
FURNITURE

P.O. BOX 30 • 1641 FAIRYSTONE PARK HWY • STANLEYTOWN, VA 24168
stanleyfurniture.com