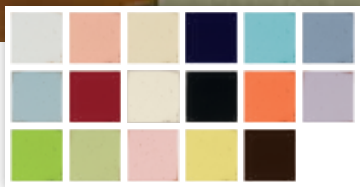


MA MARIE



youngAmerica® 
MADE IN THE USA

MA MARIE

EVEN IF YOU'VE NEVER VISITED AVIGNON, Arles or St. Remy, the names alone conjure the romance and understated elegance of the French countryside. An inspiration for paintings, books, movies and songs, Provence lies at the heart of Ma Marie.

Serpentine fronts, accent moldings and fanciful carved legs add a light, airy touch inspired by the timeless, eclectic flavor of France's Southeast region. But even more, Ma Marie offers an artistic selection of finish options. Multiple finishes options allow your daughter's personality and style to shine through. Whether you choose one finish on every piece, or decide to mix and match hues, the look will be uniquely yours.

While Ma Marie's styling is French, you can rest assured that it's made close to home in our Robbinsville, NC factory. All Ma Marie pieces feature our exclusive SafeT3™ process—three levels of product and environmental safeguards designed to ensure that our furniture is the safest you can buy.

See for yourself why Ma Marie c'est tres chic.





IN THE DETAILS

BEAUTY IS IN THE DETAILS and that's especially true with this collection. Crafted from wood that's harvested exclusively from sustainable forests in North America, Ma Marie is just one example of how we're able to reduce our carbon footprint on the environment by not importing lumber from a foreign source. Take a closer look at what makes Ma Marie such a natural beauty.

Finish / Wood Characteristics

Ma Marie is crafted from poplar solids, select hardwood solids and select hardwood veneers with simulated wood components on select items. It's lightly antiqued with some gentle fly specking and dry brushing to lend the collection its Old World charm.



paints

					
FRENCH WHITE ANTIQUÉ C6	PEACH ANTIQUÉ G6	SHELL ANTIQUÉ H6	TRUE BLUE ANTIQUÉ J6	SURF BLUE ANTIQUÉ K6	LILAC ANTIQUÉ M6
					
SKY BLUE ANTIQUÉ N6	CHILI PEPPER ANTIQUÉ P6	CREME ANTIQUÉ Q6	BLACK ANTIQUÉ R6	TANGERINE ANTIQUÉ S6	LAVENDER ANTIQUÉ T6
					
SOUR APPLE ANTIQUÉ U6	SEA GRASS ANTIQUÉ V6	COTTON CANDY ANTIQUÉ X6	SUNFLOWER ANTIQUÉ Y6	CHOCOLATE ANTIQUÉ Z6	ANTIQUÉ

Hardware

Ma Marie pairs antique white hardware with the French White Antique finish. Dark antique pewter hardware is on all other finishes.



Quality Cues

It's one thing to claim quality and another to prove it. Young America is a work of art down to its core. We start with high quality American hardwoods and veneers from sustainable forests, then we build on the tradition of craftsmanship we've practiced for nearly a century.

- ✔ Wooden mattress platforms for all cribs
- ✔ Dovetailed drawers in front and back
- ✔ Mortise and tenon joints
- ✔ Clear coated finished drawers
- ✔ Corner blocked under drawer construction
- ✔ Solid hardwood corner blocks are glued and fastened in place with screws to strengthen the cases and chairs



WOODEN MATTRESS PLATFORM
An attached wooden mattress platform further insures the safety of your little one. Because their security gives you sweet dreams.



DOVETAILING
Old-fashioned craftsmanship for strength and lasting fit



WOOD CORNER BLOCKS
Grooved, glued and fastened in place with screws for the most sturdy fits



SLIDE-IN BACK PANELS
Completely sealed case protects precious contents. Screws, not staples, add strength



ADJUSTABLE LEVELERS
Adjustable inserts allow for easy set-up in older homes where floors may not be exactly level

Safety and Function Features

Look for the icons below in the product specification pages to learn more about the different features offered.



DRAWER STOPS

Heavy-duty metal guides slide smoothly, prevent warping and offer patented automatic stops preventing dangerous spills.



HI-LO BEDRAIL LOCKING SYSTEM

Hi-lock position raises the bed to accommodate underbed storage or sleep options. Or, select the Lo-lock position and add our PSR-3267 Pair Safety Rails to easily convert most twin and double beds to a transition bed.



ADJUSTABLE LEVELERS

Adjustable inserts allow for easy set-up in older homes where floors may not be exactly level.



SLAT-ROLL MATTRESS SUPPORT

Handy when underbed options are used, and bed rails are in Hi-lock position or a transition bed configuration. Each wood slat fastens with screws providing support without the need for a box spring or a bunkie board. Your mattress rests directly on the slat roll.



TIP RESTRAINTS

Taller cases feature our anti-tipping kit that can secure the backs of cases to the wall deterring dangerous tipping.



ELECTRONICS READY

Openings in convenient but discreet places that allow cords to pass through.



UNDERBED SPACE SAVER

A useful and easy option when a quick need for additional sleep space is needed.



UNDERBED TRUNDLE UNIT

Provides additional sleep and storage room when space is at a premium.

safety first.



At Young America, we believe that when it comes to kids you can't be too safe. That thought guides every decision we make about our furniture and led us to develop Young America's exclusive **SafeT3** process—three levels of product and environmental safeguards designed to ensure that our furniture is the safest you can buy.

safety engineered

Safety doesn't just happen. It's achieved. That's why our commitment to safety begins before the first piece of lumber is ever cut—in the planning phase.

We've developed our own system of safety features that surpass even the most stringent mandatory safety regulations set by the Consumer Product Safety Commission (CPSC). And Young America doesn't stop there; we also exceed the voluntary product safety guidelines created by groups such as the Juvenile Product Manufacturers Association (JPMA) and the American Society of Testing and Materials (ASTM). We're actively

involved with these groups to encourage increased regulation and even more stringent standards.



second. and third.



safety built

This is where the rubber meets the road safety-wise. From the way it's built to the materials we use, Young America's commitment to creating the safest possible environment for your child is easy to see.

Quality Made in the USA

It's easier to ensure safety when your products are made close to home by our own employees. That's why all but a few component parts of our furniture are made right here in our Robbinsville, North Carolina factory. Those parts that aren't are subject to the same industry-leading quality and safety standards as the rest of our products.

We start with high quality American hardwoods and veneers from sustainable forests located within 300 miles of our factories, then build on the tradition of craftsmanship we've practiced since 1924, with features like mortise and tenon joints, dovetailed drawers in front and back and



wooden mattress platforms for all cribs. All our paints and finishes are phthalate- and lead-free.

Green. In Every Color.

Made in the USA is also good for our environment. Because our products don't have to ship from overseas, we reduce our carbon footprint. We also work to reduce packaging materials and recover and reuse manufacturing materials, further reducing our impact on the planet.

safety certified

It's one thing to say you're safe and another thing to prove it, so Young America invites third party certification for our products.

Intertek

Intertek, the leading independent third party certification lab for safety and design, takes us beyond testing, by inspecting and certifying our products. We reduce risk by incorporating safe manufacturing principles and processes, and mitigate mistakes that undermine quality or safety.



Intertek

GREENGUARD®

Children spend nearly 85% of their time indoors, where the air can be two-to-five times more polluted than outdoor air because of toxic chemical emissions from everyday products. GREENGUARD Certification means our products have been independently tested to meet the most stringent chemical emissions standards in the world.



Testing in a dynamic environmental chamber where air flow simulates actual use.

For more information, visit youngAmerica.com.



built to grow™



BTG-2000-G6, Built to Grow Slat Crib, PEACH ANTIQUE G6 (details p. 34)
579-0002-H6, Double Dresser, SHELL ANTIQUE H6 (details p. 38)
CHS-3300-H6, Changing Station, SHELL ANTIQUE H6 (details p. 38)



Additional items may be needed to convert crib as displayed. Please consult your retailer.



Children grow. Needs change. Taste evolves. Style transforms. In fact, the one thing you can count on with children is change. That's why we build Ma Marie—and all Young America furniture—with the ability to adapt to all the changes your child will face.

From the infant safe haven to the rough and tumble world of toddlers, from the multi-use play/chill space of tweens to the uber-private world of teens, your child's room reflects the stages of their lives. Ma Marie offers a range of sleep, storage and study options to see them through it all.

What's more, our commitment to quality construction means Ma Marie is built to withstand more than just the day-to-day rigors of childhood; it's built to endure the year-to-year tests of today's youth. Plus its gracious, classic lines stylishly accommodate decades of room makeovers.

1
infant

Your infant needs sleep. Focus on a safe, comforting environment where all the essentials are within reach.

2
preschool

Your preschooler is filled with curiosity. Choose furniture that promotes safe exploration, and can hold all the toys a young explorer needs.

3
tween

Your tween needs space to study and play. Focus on furniture that plays multiple roles, so the room doesn't become too crowded.

4
teen

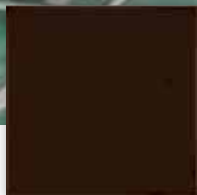
Your teen needs storage, storage and storage. Make sure his or her refuge has space for everything so it doesn't end up on the floor.

Built to Grow cribs provide safety at every stage as they change with your child offering a full range of storage options to see them from infancy through toddler, tween and teenage years.





COTTON CANDY
ANTIQUÉ X6



CHOCOLATE
ANTIQUÉ Z6

*Olivia was born into royalty ...
or so it seems. She commands
an entire room with a mere
smile; controls her palace with
a wave of her hand; delights
her subjects with every giggle.*



BTG-2800-X6
Built to Grow Panel/Decorative Turning Crib
COTTON CANDY ANTIQUE X6
(details p. 34)



579-0001-Z6
Single Dresser
CHOCOLATE ANTIQUE Z6
(details p. 38)



SSC-1200-R6
Stationary Crib
BLACK ANTIQUE R6
(details p. 34)



CHS-3300-R6
Changing Table

579-0001-R6
Single Dresser
BLACK ANTIQUE R6
(details p. 38)



>>



>>



Our stationary cribs also morph from crib to toddler bed to daybed.

Additional items may be needed to convert crib as displayed. Please consult your retailer.



SHELL ANTIQUE H6



BED-5333-H6
Twin Cameo Low Post Panel Bed
SHELL ANTIQUE H6
(details p. 35)

shown on p. 12 with PSR-3267-H6
Pair Safety Rails
(details p. 37)



579-0080-H6
Night Stand
SHELL ANTIQUE H6
(details p. 39)



579-0018-H6
Armoire
SHELL ANTIQUE H6
(details p. 39)



Black pewter hardware and curved molding add opulent charm.



BNK-7300-V6
Twin Bunk Bed
SEA GRASS ANTIQUE V6
(details p. 37)



Finials included to allow conversion
to two half bunks.



SEA GRASS
ANTIQUÉ V6



BED-5343-C6
Twin Panel Bed
FRENCH WHITE ANTIQUE C6
(details p. 35)

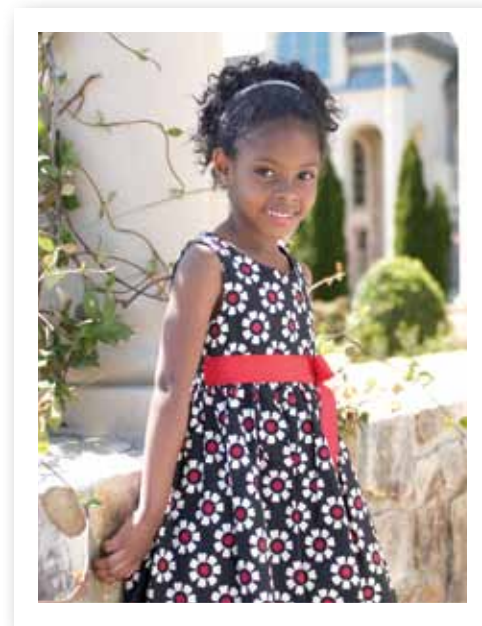
shown on p. 17,
BED-5344-C6 Double Panel Bed
(details p. 35)



579-0080-C6
Night Stand
FRENCH WHITE ANTIQUE C6
(details p. 39)



579-0014-C6
Door Chest
FRENCH WHITE ANTIQUE C6
(details p. 38)



Avery is as girly girl as it gets. She prefers dresses to jeans and there's never a hair out of place. Her favorite pastime is, you guessed it, dress up.



FRENCH WHITE
ANTIQUE C6



BLACK
ANTIQUE R6



579-0082-R6
Night Stand
BLACK ANTIQUE R6
(details p. 39)



BED-5343-R6
Twin Panel Bed
BLACK ANTIQUE R6
(details p. 35)

579-0014-R6, Door Chest
BLACK ANTIQUE R6
(details p. 38)





CREME ANTIQUE Q6



BED-5324-Q6
Double Low Post Panel Bed
CREME ANTIQUE Q6
(details p. 35)



MIR-3100-Q6
Tilt Mirror
CREME ANTIQUE Q6
(details p. 39)

579-0004-Q6
Dressing Chest
CREME ANTIQUE Q6
(details p. 38)



579-0082-Q6
Night Stand
CREME ANTIQUE Q6
(details p. 39)



When a play date gets extended, friends can easily overnight with a trundle.



BED-5613-C6
Twin Poster Bed with Framed Top
 FRENCH WHITE ANTIQUE C6
 (details p. 36)

shown on p. 23 with TSU-0069-C6
 Underbed Trundle Unit
 (curtains not included, details p. 37)



579-0012-C6
Chest
 FRENCH WHITE ANTIQUE C6
 (details p. 38)



579-0082-C6
Night Stand
 FRENCH WHITE ANTIQUE C6
 (details p. 39)



SHELL
ANTIQUÉ H6



BED-5413-H6
Twin French Manor Bed
SHELL ANTIQUE H6
(details p. 36)



579-0080-H6
Night Stand
SHELL ANTIQUE H6
(details p. 39)



579-0226-H6
Computer Desk
SHELL ANTIQUE H6
(details p. 40)



CHR-0072-H6
Student Chair
SHELL ANTIQUE H6
(details p. 40)



A drop down keyboard drawer keeps the Internet close at hand.



SKY BLUE
ANTIQUÉ N6



FRENCH WHITE
ANTIQUÉ C6



WAL-8290-N6, **Door Bookcase**, SKY BLUE ANTIQUE N6 (details p. 41)
 WAL-8230-N6, **Large Storage Hutch**, SKY BLUE ANTIQUE N6 (details p. 41)
 WAL-8260-N6, **Narrow Bookcase**, SKY BLUE ANTIQUE N6 (details p. 41)
 WAL-8220-N6, **Writing Desk**, SKY BLUE ANTIQUE N6 (details p. 40)
 CHR-0072-C6, **Student Chair**, FRENCH WHITE ANTIQUE C6 (details p. 40)



Surfing the web is a breeze with a drop front keyboard drawer.



Bookcase drawers give extra storage options.

WALL UNITS

Create storage central with our customizable wall units. Choose from a range of bookcases and storage hutches to create your base. Then pair it with whatever you need. Baby's room? Choose a dresser with a changing station. Tween haven? Tuck a cozy bed between bookcases. Study time? Fit a desk within arms reach of all their essentials. The best part is that no matter where you start, your storage can grow right along with your child.

WAL-8270-C6
Open Bookcase
FRENCH WHITE ANTIQUE C6
(details p. 41)

WAL-8120-C6
Storage Hutch
FRENCH WHITE ANTIQUE C6
(details p. 41)

WAL-8290-C6
Door Bookcase
FRENCH WHITE ANTIQUE C6
(details p. 41)

CHS-3300-C6
Changing Station
FRENCH WHITE ANTIQUE C6
(details p. 38)

579-0001-C6
Single Dresser
FRENCH WHITE ANTIQUE C6
(details p. 38)



WAL-8280-C6
Drawer Bookcase
FRENCH WHITE ANTIQUE C6
(details p. 41)

WAL-8120-C6
Storage Hutch
FRENCH WHITE ANTIQUE C6
(details p. 41)

WAL-8290-C6
Door Bookcase
FRENCH WHITE ANTIQUE C6
(details p. 41)

BED-5333-C6
Twin Cameo Low Post Panel Bed
FRENCH WHITE ANTIQUE C6
(details p. 35)

shown with Low Profile Footboard LPF-3285
(details p. 37)





WAL-8260-V6
Narrow Bookcase
 SEA GRASS ANTIQUE V6
 (details p. 41)

WAL-8120-V6
Storage Hutch
 SEA GRASS ANTIQUE V6
 (details p. 41)

WAL-8260-V6
Narrow Bookcase
 SEA GRASS ANTIQUE V6
 (details p. 41)

CHS-3300-V6
Changing Station
 SEA GRASS ANTIQUE V6
 (details p. 38)

WAL-8190-V6
Large Console
 SEA GRASS ANTIQUE V6
 (details p. 41)



WAL-8280-C6
Drawer Bookcase
 FRENCH WHITE ANTIQUE C6
 (details p. 41)

WAL-8120-C6
Storage Hutch
 FRENCH WHITE ANTIQUE C6
 (details p. 41)

WAL-8290-C6
Door Bookcase
 FRENCH WHITE ANTIQUE C6
 (details p. 41)

WAL-8220-V6
Writing Desk
 SEA GRASS ANTIQUE V6
 (details p. 40)

CHR-0072-V6
Student Chair
 SEA GRASS ANTIQUE V6
 (details p. 40)



HBK-7350-C6
Half Bunk Bed
 FRENCH WHITE ANTIQUE C6
 (details p. 36)



Small hutch drawers are ideal for storing treasures and secrets.



579-0224-C6
Large Hutch
 FRENCH WHITE ANTIQUE C6
 (details p. 40)

579-0002-C6
Double Dresser
 FRENCH WHITE ANTIQUE C6
 (details p. 38)





FRENCH WHITE
ANTIQUÉ C6

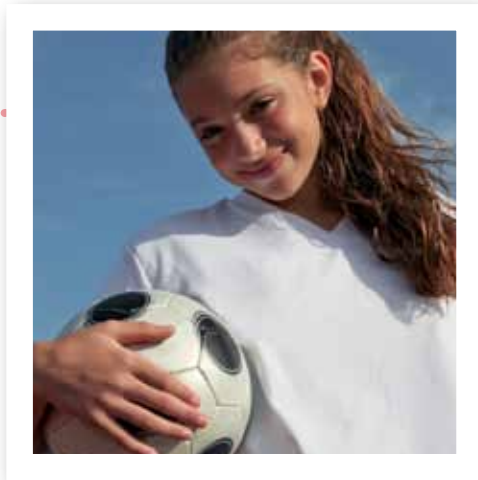


FRENCH WHITE
ANTIQUÉ C6



BLACK
ANTIQUÉ R6

When she's not playing right wing, Addison goes the extra mile (or in her case 13.1 miles) training for her first half-marathon. The rest of the time you can find her eating, sleeping and, like most teenagers, texting.



HBD-5323-R6
Twin Low Post Panel Headboard
(details p. 35)

LPF-3285-R6
Twin Low Profile Footboard
BLACK ANTIQUE R6
(details p. 39)

requires purchase of RLS-0050-R6
Pair of Wood Rails
and SLR-0368-00 Slat Roll



579-0082-C6
Night Stand
FRENCH WHITE ANTIQUE C6
(details p. 39)

CRIBS



BTG-2000 BUILT TO GROW SLAT CRIB

Mattress platform has two height adjustments

Ends have openings for bumper ties

Overall: 30 11/16W 51 1/2H 58L
(78 x 131 x 147 cm)

BTK-3230 Toddler Bed Kit

Purchase converts crib to toddler bed/daybed

Includes toddler bed rail and frame

56 1/4W 1 3/16D 36 3/8H (143 x 3 x 92 cm)

BTF-3235 Built to Grow Conversion Kit

Purchase converts crib to 4/6 double bed

Consists of RLS-0050 3/3-4/6 Pair of Hook on Wood Rails

SLR-0468-00 4/6 Slat Roll

4/6 bed will accommodate PSR-3267 Safety Rails

Can be used as headboard only with metal bed frame

Accommodates underbed storage/trundle options

When converted to 4/6 bed:

58 3/8W 51 1/2H 79 5/8L
(148 x 131 x 202 cm)

SEE PAGES 6, 7



BTG-2800 BUILT TO GROW PANEL/DECORATIVE TURNING CRIB

Mattress platform has two height adjustments

Ends and headboard have openings for bumper ties

Overall: 30 1/2W 53 13/16H 57 1/2L
(77 x 137 x 146 cm)

BTK-3230 Toddler Bed Kit

Purchase of BTK 3230 Toddler Bed Kit converts crib to toddler bed/daybed

56 1/4W 1 3/16D 36 3/8H (143 x 3 x 92 cm)

BTF-3235 Built to Grow Conversion Kit

Purchase converts crib to 4/6 double bed

Consists of RLS-0050 3/3-4/6 Pair of Hook on Wood Rails

SLR-0468-00 4/6 Slat Roll

4/6 bed will accommodate PSR-3267 Safety Rails

Can be used as headboard only with metal bed frame

WILL NOT ACCOMMODATE UNDERBED STORAGE OPTIONS

When converted to 4/6 bed:

57 7/8W 52 1/8H 79 1/4L
(147 x 132 x 201 cm)

SEE PAGES 8, 9



SSC-1200 STATIONARY CRIB

Mattress platform has two height adjustments

Ends have openings for bumper ties

Overall: 31 3/8W 50 3/4H 56 1/8L
(80 x 129 x 143 cm)

STK-3435 Stationary Toddler Kit

Purchase converts crib to toddler bed/daybed includes toddler bed rail and frame

37 7/8W 15 1/8H (96 x 38 cm)

SEE PAGES 10, 11

NOTE: Young America may find it necessary to make changes to prices, colors, materials, equipment and specifications at any time or even discontinue certain items. We'll try not to, but our lawyers say we have to let you know that it could happen.



BED-5323 TWIN LOW POST PANEL BED

HBD-5323 Low Post Panel Headboard 3/3
bored for metal frame
41 5/8W 52 1/2H (106 x 133 cm)

FTB-5323 Low Post Panel Footboard 3/3
41 5/8W 36 1/8H (106 x 92 cm)

RLS-0050 Pair Wood Rails
3/3-4/6 (Hook)
5 1/4H 76L (13 x 193 cm)

SLR-O368 Slat Roll 3/3
bottom of side rail to floor: low lock
7 1/2H (19 cm)
bottom of side rail to floor: high lock
13 1/2H (34 cm)

Overall: 41 5/8W 52 1/2H 82 L
(106 x 133 x 208 cm)

SEE PAGES 32, 33



BED-5324 DOUBLE LOW POST PANEL BED

HBD-5324 Low Post Panel Headboard 4/6
bored for metal frame
56 5/8W 55 1/2H (144 x 141 cm)

FTB-5324 Low Post Panel Footboard 4/6
56 5/8W 38 1/8H (144 x 97 cm)

RLS-0050 Pair Wood Rails
3/3-4/6 (Hook)
5 1/4H 76L (13 x 193 cm)

SLR-O468 Slat Roll 4/6
bottom of side rail to floor: low lock
7 1/2H (19 cm)
bottom of side rail to floor: high lock
13 1/2H (34 cm)

Overall: 56 5/8W 55 1/2H 82 11/16L
(144 x 141 x 210 cm)

SEE PAGES 20, 21



BED-5325 QUEEN LOW POST PANEL BED

HBD-5325 Low Post Panel Headboard 5/0
bored for metal frame
63 5/8W 55 1/2H (162 x 141 cm)

FTB-5325 Low Post Panel Footboard 5/0
63 5/8W 38 1/8H (162 x 97 cm)

RLS-0051 Pair Wood Rails
5/0 (Hook)
5 1/4H 82L (13 x 208 cm)

bottom of side rail to floor: low lock only
7 1/2H (19 cm)

Overall: 63 5/8W 55 1/2H 88L
(162 x 141 x 224 cm)

WILL NOT ACCOMMODATE UNDERBED
STORAGE OPTIONS



BED-5333 TWIN CAMEO LOW POST PANEL BED

HBD-5333 Cameo Low Post Panel Headboard 3/3
bored for metal frame
42 7/16W 52H (108 x 132 cm)

FTB-5333 Cameo Low Post Panel Footboard 3/3
42 7/16W 36H (108 x 91 cm)

RLS-0050 Pair Wood Rails
3/3-4/6 (Hook)
5 1/4H 76L (13 x 193 cm)

SLR-O368 Slat Roll 3/3
bottom of side rail to floor: low lock
7 1/2H (19 cm)
bottom of side rail to floor: high lock
13 1/2H (34 cm)

Overall: 42 7/16W 52H 81 1/4L
(108 x 132 x 206 cm)

SEE PAGES 12, 13, 28



BED-5334 DOUBLE CAMEO LOW POST PANEL BED

HBD-5334 Cameo Low Post Panel Headboard 4/6
bored for metal frame
57 7/16W 53H (146 x 135 cm)

FTB-5334 Cameo Low Post Panel Footboard 4/6
57 7/16W 37H (146 x 94 cm)

RLS-0050 Pair Wood Rails
3/3-4/6 (Hook)
5 1/4H 76L (13 x 193 cm)

SLR-O468 Slat Roll 4/6
bottom of side rail to floor: low lock
7 1/2H (19 cm)
bottom of side rail to floor: high lock
13 1/2H (34 cm)

Overall: 57 7/16W 53H 81 1/4L
(146 x 135 x 206 cm)



BED-5343 TWIN PANEL BED

HBD-5343 Panel Headboard 3/3
42 5/8W 52 1/8H (108 x 132 cm)

FTB-5343 Panel Footboard 3/3
42 5/8W 32 1/8H (108 x 82 cm)

RLS-0050 Pair Wood Rails
3/3-4/6 (Hook)
5 1/4H 76L (13 x 193 cm)

SLR-O368 Slat Roll 3/3
bottom of side rail to floor: low lock
7 1/2H (19 cm)
bottom of side rail to floor: high lock
13 1/2H (34 cm)

Overall: 42 5/8W 52 1/8H 78 7/8L
(108 x 132 x 200 cm)

SEE PAGES 16, 18



BED-5344 DOUBLE PANEL BED

HBD-5344 Panel Headboard 4/6
57 5/8W 52 1/2H (146 x 133 cm)

FTB-5344 Panel Footboard 4/6
57 5/8W 32 3/8H (146 x 82 cm)

RLS-0050 Pair Wood Rails
3/3-4/6 (Hook)
5 1/4H 76L (13 x 193 cm)

SLR-O468 Slat Roll 4/6
bottom of side rail to floor: low lock
7 1/2H (19 cm)
bottom of side rail to floor: high lock
13 1/2H (34 cm)

Overall: 57 5/8W 52 1/2H 78 7/8L
(146 x 133 x 200 cm)

SEE INSIDE FRONT COVER, PAGES 1, 17



BEDS



BED-5413 TWIN FRENCH MANOR BED

HBD-5413 French Manor Headboard 3/3
42 1/2W 53H (108 x 135 cm)

FTB-5413 French Manor Footboard 3/3
42 1/2W 33H (108 x 84 cm)

RLS-0050 Pair Wood Rails
3/3-4/6 (Hook)
5 1/4H 76L (13 x 193 cm)

SLR-O368 Slat Roll 3/3
bottom of side rail to floor: low lock
7 1/2H (19 cm)
bottom of side rail to floor: high lock
13 1/2H (34 cm)

Overall: 42 1/2W 53H 81 1/2L
(108 x 135 x 207 cm)

SEE COVER, PAGES 24, 25



BED-5414 DOUBLE FRENCH MANOR BED

HBD-5414 French Manor Headboard 4/6
57 1/2W 53H (146 x 135 cm)

FTB-5414 French Manor Footboard 4/6
57 1/2W 33H (146 x 84 cm)

RLS-0050 Pair Wood Rails
3/3-4/6 (Hook)
5 1/4H 76L (13 x 193 cm)

SLR-O468 Slat Roll 4/6
bottom of side rail to floor: low lock
7 1/2H (19 cm)
bottom of side rail to floor: high lock
13 1/2H (34 cm)

Overall: 57 1/2W 53H 81 1/2L
(146 x 135 x 207 cm)



BED-5613 TWIN PANEL POSTER BED WITH FRAMED TOP

HBD-5613 Panel Poster Headboard 3/3
41 5/8W 53 1/2H (106 x 136 cm)

FTB-5613 Panel Poster Footboard 3/3
41 5/8W 36 1/8H (106 x 92 cm)

RLS-0057 Pair Wood Rails
3/3 (Hook) and Poster Bed Frame 3/3

SLR-O368 Slat Roll 3/3
bottom of side rail to floor: low lock
7 1/2H (19 cm)
bottom of side rail to floor: high lock
13 1/2H (34 cm)

Overall: 41 5/8W 82 1/2H 82L
(106 x 210 x 208 cm)

SEE PAGES 22, 23



BED-5614 DOUBLE POSTER BED WITH FRAMED TOP

HBD-5614 Panel Poster Headboard 4/6
56 5/8W 55 1/2H (144 x 141 cm)

FTB-5614 Panel Poster Footboard 4/6
56 5/8W 38 1/8H (144 x 97 cm)

RLS-0058 Pair Wood Rails
4/6 (Hook) and Poster Bed Frame 4/6

SLR-O468 Slat Roll 4/6
bottom of side rail to floor: low lock
7 1/2H (19 cm)
bottom of side rail to floor: high lock
13 1/2H (34 cm)

Overall: 56 5/8W 82 1/2H 82L
(144 x 210 x 208 cm)



HBK-7350 TWIN HALF BUNK BED

TBE-7300 One Set of Bunk Ends 3/3

headboard: 42 7/8W 45 3/4H (109 x 116 cm)
footboard: 42 7/8W 39 5/8H (109 x 101 cm)

RLS-0052 Pair Wood Rails
3/3-4/6 (Bolt)
5 1/4H 76L (13 x 193 cm)

SLR-O368 Slat Roll 3/3
bottom of side rail to floor: low lock
7 H (18 cm)
bottom of side rail to floor: high lock
13 1/2H (34 cm)

Overall: 42 7/8W 45 13/16H 81 1/4L
(109 x 116 x 206 cm)

SEE PAGES 30, 31

To convert to a Twin Bunk Bed:

HBC-7300 Half Bunk Conversion to 3/3 Bunk Bed

TBE-7300 One Set of Bunk Ends 3/3

RLS-0052 Pair Wood Rails
3/3-4/6 (Bolt)
5 1/4H 76L (13 x 193 cm)

SLR-O368 Slat Roll 3/3

LAD-O769 Bunk Ladder

GRL-O800 One Set of Bunk Guard Rails



HBK-7450 DOUBLE HALF BUNK BED

DBE-7400 One Set of Bunk Ends 4/6

headboard: 57 3/8W 46 1/8H (146 x 117 cm)
footboard: 57 3/8W 40H (146 x 102 cm)

RLS-0052 Pair Wood Rails
3/3-4/6 (Bolt)
5 1/4H 76L (13 x 193 cm)

SLR-O468 Slat Roll 4/6
bottom of side rail to floor: low lock
7 H (18 cm)
bottom of side rail to floor: high lock
13 1/2H (34 cm)

Overall: 57 3/8W 46 1/8H 81 1/4L
(146 x 117 x 206 cm)

To convert to a Double over Double Bunk Bed:

HBC-7400 Half Bunk Conversion to 4/6 Bunk Bed

DBE-7400 One Set of Bunk Ends 4/6

RLS-0052 Pair Wood Rails
3/3-4/6 (Bolt)
5 1/4H 76L (13 x 193 cm)

SLR-O468 Slat Roll 4/6

LAD-O769 Bunk Ladder

GRL-O800 One Set of Bunk Guard Rails





BNK-7300 TWIN BUNK BED

**** (2) TBE-7300 One Set Bunk Ends 3/3**

RLS-0773 Two Pair Wood Rails

(Bolt), one pair guard rails, two slat rolls 3/3

LAD-0769 Bunk Ladder

headboard: 42 7/8W 45 3/4H (109 x 116 cm)

footboard: 42 7/8W 39 5/8H (109 x 101 cm)

bottom of side rail to floor: low lock

7 H (18 cm)

bottom of side rail to floor: high lock

13 1/2H (34 cm)

Overall: 42 3/8W 78H 81 1/4L

(108 x 198 x 206 cm)

SEE PAGES 14, 15



BNK-7400 DOUBLE OVER DOUBLE BUNK BED

**** (2) DBE-7400 One Set Bunk Ends 4/6**

RLS-0778 Two Pair Wood Rails

(Bolt), one pair guard rails, two slat rolls 4/6

LAD-0769 Bunk Ladder

headboard: 57 3/8W 46 1/8H (146 x 117 cm)

footboard: 57 3/8W 40H (146 x 102 cm)

bottom of side rail to floor: low lock

7H (18 cm)

bottom of side rail to floor: high lock

13 1/2H (34 cm)

Overall: 57 3/8W 80H 81 1/4L

(146 x 203 x 206 cm)



TOF-8300 TWIN OVER DOUBLE BUNK BED

**** (2) TBE-7300 One Set Bunk Ends 3/3**

RLS-0773 Two Pair Wood Rails

(Bolt), one pair guard rails, two slat rolls 3/3

SLR-0468 Slat Roll 4/6

TFK-0571 Extension Kit and Bunk Ladder

See measurements above for BNK-7300

Overall: 57 7/8W 79 5/8H 81 3/4L

(147 x 202 x 208 cm)



** Must order two sets of ends to make a complete bunk bed

Bed Accessories

The following items are for use only with select beds from Ma Marie.



LPF-3285 LOW PROFILE FOOTBOARD 3/3

43W 20 1/4H (109 x 51 cm)

Will accommodate underbed storage options

SEE PAGES 28, 32, 33



LPF-3290 LOW PROFILE FOOTBOARD 4/6

58W 20 1/4H (147 x 51 cm)

Will accommodate underbed storage options



TSU-0069 UNDERBED TRUNDLE UNIT

Can also be used with 4/6 double bed.

Finished inside and out on all four sides; casters.

75W 40D 13H (191 x 102 x 33 cm)

TFK-0571 EXTENSION KIT AND BUNK LADDER

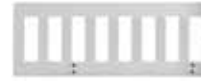
Use with BNK-7300 to create twin over full bunk; a SLR-0468 slat roll 4/6 is required.



BTK-3230 TODDLER BED KIT

For use with Built to Grow Cribs. Includes toddler bed rail and frame.

56 1/4W 1 3/16D 36 3/8H (143 x 3 x 92 cm)



STK-3435 STATIONARY TODDLER KIT

For use with Stationary Side Cribs.

Includes toddler bed rail and frame.

37 7/8W 15 1/8H (96 x 38 cm)



PSR-3267 PAIR SAFETY RAILS

47W 16 1/2H (119 x 42 cm)



USS-0097-00 UNDERBED SPACE SAVER

upper position: 72W 38D 15 1/2H

(183 x 97 x 39 cm)

lower position: 72W 38D 5H

(183 x 97 x 13 cm)

BTF-3235 BTG 4/6 DOUBLE BED CONVERSION KIT

RLS-0050 Pair Wood Rails 3/3-4/6 (Hook)

5 1/4H 76L (13 x 193 cm)

SLR-0468 Slat Roll 4/6

RLS-0050 PAIR WOOD RAILS

5 1/4H 76L (13 x 193 cm)

SLR-0368 SLAT ROLL 3/3

SLR-0468 SLAT ROLL 4/6

Bed Requirements

Crib Standard

Standard crib size mattress, 51 5/8 L 27 1/4 W (131 x 69 cm), with a thickness not exceeding 6" (15 cm)

Twin Bed

Standard twin size (3/3) mattress and box spring or twin size mattress with twin size slat roll

Double Bed

Standard double size (4/6) mattress and box spring or double size mattress with double size slat roll

Queen Bed

Standard queen size (5/0) mattress and box spring

Headboard Only

Use a mattress and box spring which correspond in size to size of headboard and a metal bed frame which attaches to the headboard.

Bunk Bed

Two standard twin size (3/3) mattresses (no bunkie board necessary with use of slat roll). The 3/3 Twin Bunk Beds include two 0368 3/3 Slat Rolls. (9" maximum thickness for mattress)

Double Over Double Bunk Bed

Two double size (4/6) mattresses (no bunkie board necessary with use of slat roll). The 4/6 Double Bunk Beds include two 0468 4/6 Slat Rolls. (9" maximum thickness for mattress)

Underbed Trundle Unit

Standard twin size (3/3) mattress (no bunkie board needed; 8 1/2" maximum thickness for mattress)

Underbed Space Saver

Standard twin size (3/3) mattress

DRESSERS/CHESTS/ARMOIRS



579-0001 SINGLE DRESSER

Four drawers, accommodates CHS 3300 changing station

46 1/2W 20 1/4D 34H (118 x 51 x 86 cm)

SEE PAGES 8, 9, 10, 28



579-0005 DRESSER

Seven drawers

64W 20 1/4D 35H (163 x 51 x 89 cm)



579-0014 DOOR CHEST

Two doors, two drawers

Behind doors: one removable clothing rod, two adjustable shelves, two cord holes

TV area: 33 1/4W 19D 29 5/8H (84 x 48 x 75 cm)

Overall: 40W 21D 62 13/16H (102 x 53 x 160 cm)

SEE INSIDE FRONT COVER, PAGES 1, 16, 17, 19



579-0002 DOUBLE DRESSER

Seven drawers, accommodates CHS 3300 changing station

56W 20 1/4D 35H (142 x 51 x 89 cm)

SEE PAGES 6, 30, 31



579-0012 CHEST

Six drawers

40W 20 1/4D 52H (102 x 51 x 132 cm)

SEE PAGES 22, 23



CHS-3300 CHANGING STATION

Use with most Young America dressers. Includes pad and safety strap.

43 1/4W 18 3/4D 9 1/2H (110 x 48 x 24 cm)

SEE PAGES 6, 10, 28, 29



579-0015 ARMOIRE

One reversible (mirror/veener) door panel, one drawer, behind door: one clothing rod, one adjustable shelf, one stationary shelf, one cord hole

29W 20D 70H (74 x 51 x 178 cm)



579-0004 DRESSING CHEST

Six drawers

42W 20 1/4D 44 1/8H (107 x 51 x 112 cm)

SEE PAGES 20, 21



579-0013 BOOKCASE

Two adjustable shelves, one cord hole, one drawer

34W 17D 54H (86 x 43 x 137 cm)





579-0018 ARMOIRE

Three drawers

Left side: one removable clothing rod, two adjustable shelves, one stationary shelf, one cord hole, one tray drawer

Right side: mirror on back of door, four adjustable shelves, one stationary shelf

TV area: 26 7/8W 16 5/8D 28 7/8H
(68 x 42 x 73 cm)

Overall: 47 1/2W 20D 70H
(121 x 51 x 178 cm)

SEE PAGES 12, 13



579-0082 NIGHT STAND

Three drawer

23W 17D 29H (58 x 43 x 74 cm)

SEE PAGES 18, 20, 21, 22, 23, 32, 33



MIR-3180 OVAL MIRROR

Plate: 23 1/4W 35 3/16H (59 x 89 cm)
Overall: 26W 40 3/16H (66 x 102 cm)



579-0033 LANDSCAPE MIRROR

Plate: 35W 39H (89 x 99 cm)
Overall: 39W 45H (99 x 114 cm)



579-0080 NIGHT STAND

One drawer, one cord hole, one stationary shelf

23W 17D 25H (58 x 43 x 64 cm)

SEE COVER, PAGES 1, 12, 13, 16, 17, 24, 25



MIR-3100 TILT MIRROR

One drawer with black felt liner

Plate: 20 1/8W 23 1/8H
(51 x 59 cm)

Overall: 30 1/4W 10 11/16D 33 15/16H
(77 x 27 x 86 cm)

SEE PAGES 20, 21





579-O224 LARGE HUTCH

Two adjustable shelves, two stationary shelves, three removable vertical partitions, two cord holes, two drawers, cord management opening

51W 14D 47 1/2H (130 x 36 x 121 cm)

SEE PAGES 30, 31



CHR-0072 STUDENT CHAIR

Coastal Cloud fabric

17W 19 1/4D 38 1/4H (43 x 49 x 97 cm)

SEE COVER, PAGES 24, 25, 26, 27, 29



579-O226 COMPUTER DESK

One dropfront keyboard drawer, two standard drawers, one file drawer, accommodates 579-O224 Large Hutch

50 3/4W 24D 30H (129 x 61 x 76 cm)

SEE COVER, PAGES 24, 25



WAL-8220 WRITING DESK

Two drawers, one drop front, one stationary shelf

Overall: 48 5/8W 22 1/2D 30H (124 x 57 x 76 cm)

SEE PAGES 26, 27, 29





WAL-8190 LARGE CONSOLE

Four adjustable shelves, four cord holes, two storage drawers
48 3/4W 19 1/4D 34H (124 x 49 x 86 cm)

SEE PAGE 29



WAL-8270 OPEN BOOKCASE

Two stationary shelves, three adjustable shelves, two cord holes, cord management opening, mending plate kit

30W 15 7/16D 78 1/4H (76 x 39 x 199 cm)

SEE PAGE 28



WAL-8290 DOOR BOOKCASE

One stationary shelf, two adjustable shelves, two cord holes, cord management opening, two doors, one adjustable shelf behind doors, mending plate kit

30W 15 7/16D 78 1/4H (76 x 39 x 199 cm)

SEE PAGES 26, 28, 29



WAL-8260 NARROW BOOKCASE

Two adjustable shelves, two stationary shelves, two cord holes, cord management opening, two drawers, mending plate kit

16 1/16W 15 7/16D 78 1/4H (41 x 39 x 199 cm)

SEE PAGE 27, 29



WAL-8280 DRAWER BOOKCASE

Two adjustable shelves, two stationary shelves, two cord holes, cord management openings, two drawers, mending plate kit

30W 15 7/16D 78 1/4H (76 x 39 x 199 cm)

SEE PAGES 28, 29



WAL-8120 STORAGE HUTCH

Two vertical partitions, two cord holes, attachment brackets, accommodates 3/3 bed in wall system

48 3/4W 15 7/16D 15 3/8H (124 x 39 x 39 cm)

SEE PAGES 28, 29



WAL-8230 LARGE STORAGE HUTCH

Two stationary vertical partitions, two cord holes, attachment brackets, accommodates 4/6 bed in wall system

63 3/4W 15 7/16D 15 3/8H (162 x 39 x 39 cm)

SEE PAGES 26, 27



join the club

Becoming a member of the Y.A. Club is the best way to experience all that Young America has to offer. We'll update you on new product introductions, give you chances to win future discounts, keep you posted on your purchases and allow you to create your own wish list of Young America products.



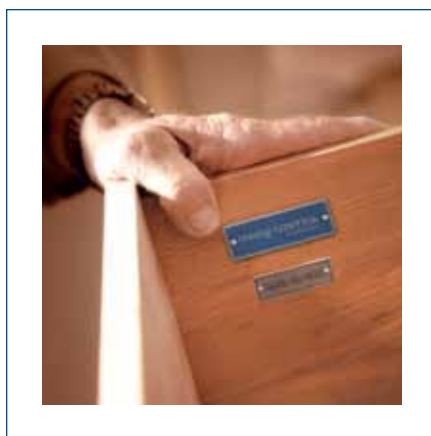
BUILD YOUR WISH LIST

As you browse youngAmerica.com, add items to your wish list. Then you can share your wish list with family and friends or your preferred retailer. Print it out or email it to the grandparents!

REGISTER YOUR PURCHASES

To ensure that you're always up to date, register your purchases here on youngAmerica.com. In the event we add or discontinue items or collections, we'll notify you so you can locate what you want or need to round out your child's room.

Register today at youngAmerica.com/account/signup



AN AMERICAN FURNITURE MANUFACTURER
SINCE 1924

youngAmerica®
MADE IN THE USA 

YOUNG AMERICA IS A REGISTERED TRADEMARK OF STANLEY FURNITURE COMPANY, INC.
P.O. BOX 30 • 1641 FAIRSTONE PARK HWY • STANLEYTOWN, VA 24168
youngAmerica.com