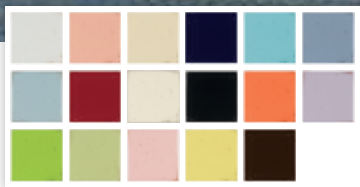


ISABELLA



youngAmerica®
MADE IN THE USA



TOUR THE CASTLES AND VILLAS OF Italy and you'll find something akin to Isabella. Opulent, enchanting and utterly bewitching—it provides the perfect backdrop to everything from toddler fairy tales to teenage melodrama.

Isabella's intricately carved rosettes and ribbon panels, decorative overlays and ornate finials evoke regal sophistication. Antiquing and subtle contrast striping adds to the collection's Old World feel.

Made of poplar and select hardwood solids with poplar and hardwood veneers, Isabella showcases Young America's expert hand craftsmanship. The gently distressed finishes feature pale decorative striping and light dusting, highlighting the collection's detailed carvings.

Isabella is fit for a princess, and we all know royalty expect the best. So, like all Young America furniture, Isabella is made in our Robbinsville, NC factory and features our exclusive SafeT3™ process—three levels of product and environmental safeguards designed to ensure that our furniture is the safest you can buy.

Create a story-book world for your little princess with Isabella.



ISABELLA



IN THE DETAILS

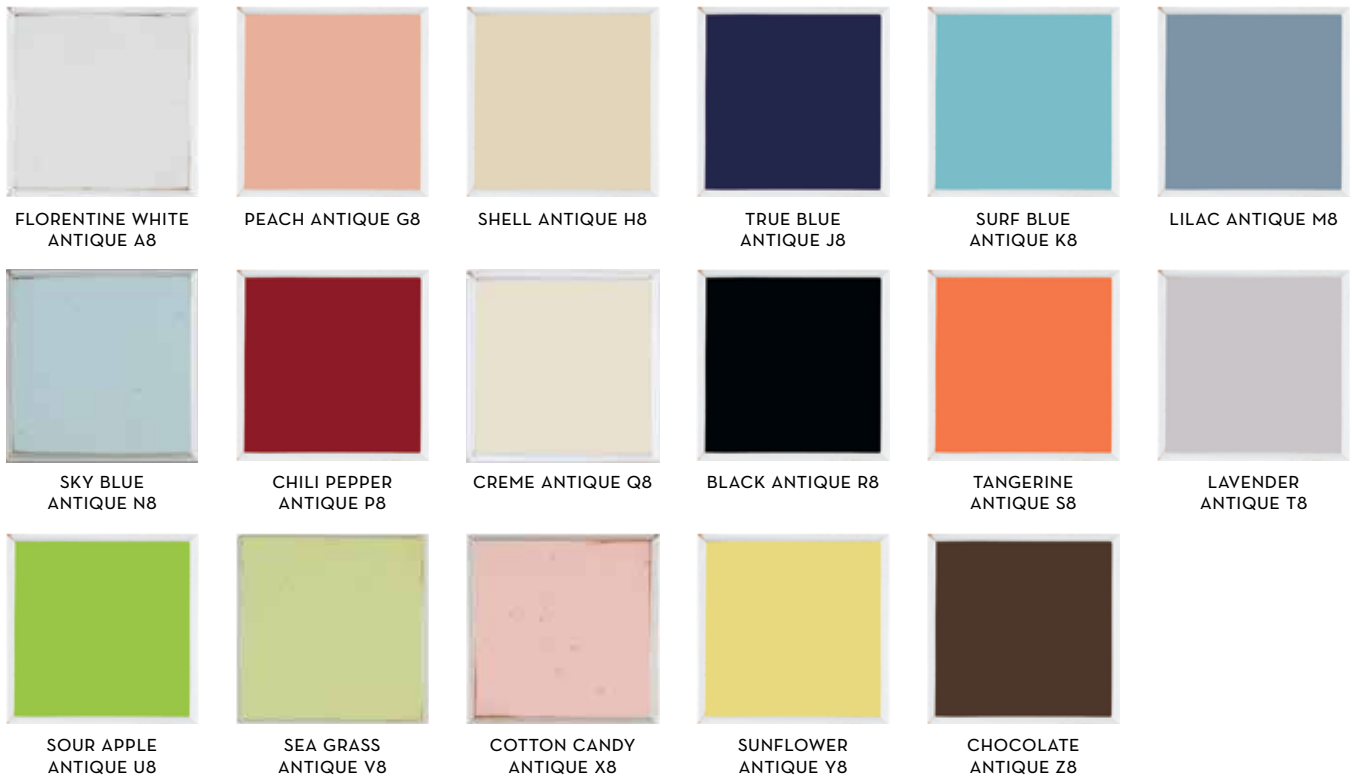
BEAUTY IS IN THE DETAILS and that's especially true with this collection. Crafted from wood that's harvested exclusively from sustainable forests in North America, Isabella is just one example of how we're able to reduce our carbon footprint on the environment by not importing lumber from a foreign source. Take a closer look at what makes Isabella such a natural beauty.

Finish / Wood Characteristics

Isabella is crafted from poplar solids and select hardwood solids, plus poplar and select hardwood veneers. It's available in 17 paint finishes with light to medium antiquing, including dry brush, fly specking and light distressing. All finishes feature a subtle contrasting stripe effect.



paints



Hardware

Decorative Florentine white pulls and knobs accent dressers and armoires.



Quality Cues

It's one thing to claim quality and another to prove it. Young America is a work of art down to its core. We start with high quality American hardwoods and veneers from sustainable forests, then we build on the tradition of craftsmanship we've practiced for nearly a century.

- ✔ Wooden mattress platforms for all cribs
- ✔ Dovetailed drawers in front and back
- ✔ Mortise and tenon joints
- ✔ Clear coated finished drawers
- ✔ Corner blocked under drawer construction
- ✔ Solid hardwood corner blocks are glued and fastened in place with screws to strengthen the cases and chairs



WOODEN MATTRESS PLATFORM
An attached wooden mattress platform further insures the safety of your little one. Because their security gives you sweet dreams.



DOVETAILING
Old-fashioned craftsmanship for strength and lasting fit



WOOD CORNER BLOCKS
Grooved, glued and fastened in place with screws for the most sturdy fits



SLIDE-IN BACK PANELS
Completely sealed case protects precious contents. Screws, not staples, add strength



ADJUSTABLE LEVELERS
Adjustable inserts allow for easy set-up in older homes where floors may not be exactly level

Safety and Function Features

Look for the icons below in the product specification pages to learn more about the different features offered.



DRAWER STOPS

Heavy-duty metal guides slide smoothly, prevent warping and offer patented automatic stops preventing dangerous spills.



HI-LO BEDRAIL LOCKING SYSTEM

Hi-lock position raises the bed to accommodate underbed storage or sleep options. Or, select the Lo-lock position and add our PSR-3267 Pair Safety Rails to easily convert most twin and double beds to a transition bed.



ADJUSTABLE LEVELERS

Adjustable inserts allow for easy set-up in older homes where floors may not be exactly level.



SLAT-ROLL MATTRESS SUPPORT

Handy when underbed options are used, and bed rails are in Hi-lock position or a transition bed configuration. Each wood slat fastens with screws providing support without the need for a box spring or a bunkie board. Your mattress rests directly on the slat roll.



TIP RESTRAINTS

Taller cases feature our anti-tipping kit that can secure the backs of cases to the wall deterring dangerous tipping.



ELECTRONICS READY

Openings in convenient but discreet places that allow cords to pass through.



UNDERBED SPACE SAVER

A useful and easy option when a quick need for additional sleep space is needed.



UNDERBED TRUNDLE UNIT

Provides additional sleep and storage room when space is at a premium.

safety first.



At Young America, we believe that when it comes to kids you can't be too safe. That thought guides every decision we make about our furniture and led us to develop Young America's exclusive **SafeT3** process—three levels of product and environmental safeguards designed to ensure that our furniture is the safest you can buy.

safety engineered

Safety doesn't just happen. It's achieved. That's why our commitment to safety begins before the first piece of lumber is ever cut—in the planning phase.

We've developed our own system of safety features that surpass even the most stringent mandatory safety regulations set by the Consumer Product Safety Commission (CPSC). And Young America doesn't stop there; we also exceed the voluntary product safety guidelines created by groups such as the Juvenile Product Manufacturers Association (JPMA) and the American Society of Testing and Materials (ASTM). We're actively

involved with these groups to encourage increased regulation and even more stringent standards.



second. and third.



safety built

This is where the rubber meets the road safety-wise. From the way it's built to the materials we use, Young America's commitment to creating the safest possible environment for your child is easy to see.

Quality Made in the USA

It's easier to ensure safety when your products are made close to home by our own employees. That's why all but a few component parts of our furniture are made right here in our Robbinsville, North Carolina factory. Those parts that aren't are subject to the same industry-leading quality and safety standards as the rest of our products.

We start with high quality American hardwoods and veneers from sustainable forests located within 300 miles of our factories, then build on the tradition of craftsmanship we've practiced since 1924, with features like mortise and tenon joints, dovetailed drawers in front and back and



wooden mattress platforms for all cribs. All our paints and finishes are phthalate- and lead-free.

Green. In Every Color.

Made in the USA is also good for our environment. Because our products don't have to ship from overseas, we reduce our carbon footprint. We also work to reduce packaging materials and recover and reuse manufacturing materials, further reducing our impact on the planet.

safety certified

It's one thing to say you're safe and another thing to prove it, so Young America invites third party certification for our products.

Intertek

Intertek, the leading independent third party certification lab for safety and design, takes us beyond testing, by inspecting and certifying our products. We reduce risk by incorporating safe manufacturing principles and processes, and mitigate mistakes that undermine quality or safety.



Intertek

GREENGUARD®

Children spend nearly 85% of their time indoors, where the air can be two-to-five times more polluted than outdoor air because of toxic chemical emissions from everyday products. GREENGUARD Certification means our products have been independently tested to meet the most stringent chemical emissions standards in the world.



Testing in a dynamic environmental chamber where air flow simulates actual use.

For more information, visit youngAmerica.com.



built to grow™



BTG-2800-A8, Built to Grow Panel/Turning Decorative Crib, FLORENTINE WHITE ANTIQUE A8 (details p. 34)
CHS-3300-T8, Changing Station, LAVENDER ANTIQUE T8 (details p. 38)
326-0001-T8, Single Dresser, LAVENDER ANTIQUE T8 (details p. 38)



Additional items may be needed to convert crib as displayed. Please consult your retailer.

Children grow. Needs change. Taste evolves. Style transforms. In fact, the one thing you can count on with children is change. That's why we build Isabella—and all Young America furniture—with the ability to adapt to all the changes your child will face.

From the infant safe haven to the rough and tumble world of toddlers, from the multi-use play/chill space of tweens to the uber-private world of teens, your child's room reflects the stages of their lives. Isabella offers a range of sleep, storage and study options to see them through it all.

What's more, our commitment to quality construction means Isabella is built to withstand more than just the day-to-day rigors of childhood; it's built to endure the year-to-year tests of today's youth. Plus its classic, elegant lines stylishly accommodate decades of room makeovers.

1

infant

Your infant needs sleep. Focus on a safe, comforting environment where all the essentials are within reach.

2

preschool

Your preschooler is filled with curiosity. Choose furniture that promotes safe exploration, and can hold all the toys a young explorer needs.

3

tween

Your tween needs space to study and play. Focus on furniture that plays multiple roles, so the room doesn't become too crowded.

4

teen

Your teen needs storage, storage and storage. Make sure his or her refuge has space for everything so it doesn't end up on the floor.



Built to Grow cribs provide safety at every stage as they change with your child offering a full range of storage options to see them from infancy through toddler, tween and teenage years.



BTG-2000-T8
Built to Grow Slat Crib
LAVENDER ANTIQUE T8
(details p. 34)



Decorative white pulls and knobs accent The Dresser's ample drawers.



CHS-3300-A8
Changing Station

326-0002-A8
Dresser
FLORENTINE WHITE ANTIQUE A8
(details p. 38)

LAVENDER
ANTIQUÉ T8



FLORENTINE WHITE
ANTIQUÉ A8





326-0014-N8
Armoire
 SKY BLUE ANTIQUE N8
 (details p. 39)



326-0004-A8
Dressing Chest
 FLORENTINE WHITE ANTIQUE A8
 (details p. 38)



Graceful molding and delicate rosettes on the head and footboards of the Stationary Crib add Old World elegance.



SSC-1200-N8
Stationary Crib
 SKY BLUE ANTIQUE N8
 (details p. 34)



Our stationary cribs also morph from crib to toddler bed to daybed.

Additional items may be needed to convert crib as displayed. Please consult your retailer.



SKY BLUE
ANTIQUÉ N8



FLORENTINE WHITE
ANTIQUÉ A8



BED-5343-A8
Twin Panel Bed
FLORENTINE WHITE ANTIQUE A8
(details p. 35)

shown on p. 13 with PSR-3267-A8
Pair of Safety Rails
(details p. 37)



326-0018-A8
Armoire
FLORENTINE WHITE ANTIQUE A8
(details p. 39)

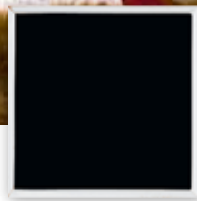


326-0033-A8
Cheval Mirror
FLORENTINE WHITE ANTIQUE A8
(details p. 40)



326-0082-A8
Night Stand
FLORENTINE WHITE ANTIQUE A8
(details p. 39)





BLACK ANTIQUE R8



BED-5323-A8
Twin Low Post Panel Bed
FLORENTINE WHITE ANTIQUE A8
(details p. 35)

shown on p. 14 in BLACK ANTIQUE R8



FLORENTINE WHITE
ANTIQUÉ A8



BED-5333-A8
Twin Cameo Low Post Panel Bed
FLORENTINE WHITE ANTIQUE A8
(details p. 35)



326-0082-A8
Night Stand
FLORENTINE WHITE ANTIQUE A8
(details p. 39)



MIR-3180-A8
Oval Mirror
(details p. 40)

326-0001-A8
Single Dresser
FLORENTINE WHITE ANTIQUE A8
(details p. 38)



The carved post and curved top of the Single Dresser add just the right touch to underscore the collection's graceful lines.



BED-5324-Q8
Double Low Post Panel Bed
CREME ANTIQUE Q8
(details p. 35)



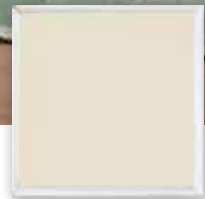
326-0082-Q8
Night Stand
CREME ANTIQUE Q8
(details p. 39)



326-0012-Q8
Chest
CREME ANTIQUE Q8
(details p. 38)



For Jaden, girl's rule and all her friends drool at her way cool room. (Her words, not ours.)



CREME ANTIQUE Q8



Finials included to allow conversion to two half bunks.



BNK-7300-A8
Twin Bunk Bed
 FLORENTINE WHITE ANTIQUE A8
 (details p. 36)

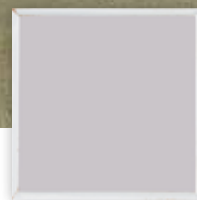


326-0224-A8
Large Hutch
 326-0226-A8
Computer Desk
 FLORENTINE WHITE ANTIQUE A8
 (details p. 40)





FLORENTINE WHITE
ANTIQUÉ A8



LAVENDER
ANTIQUE T8



FLORENTINE WHITE
ANTIQUE A8

So far, Kenzie, Serena and Jane have been inseparable through kindergarten, elementary and exactly five-eighths of middle school. And while this is technically Kenzie's room, they all claim it as their own.



HBD-5323-T8
Twin Low Post Panel Headboard
(details p. 35)

LPF-3285-T8
Twin Low Profile Footboard
LAVENDER T8
(details p. 37)

requires purchase of RLS-0050-T8
Pair of Wood Rails
and SLR-0368-00 Slat Roll



MIR-3100-A8
Tilt Mirror
(details p. 40)

326-0004-A8
Dressing Chest
FLORENTINE WHITE ANTIQUE A8
(details p. 38)



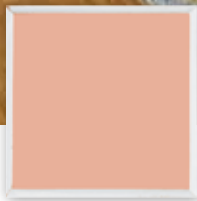
BED-5343-G8
Twin Panel Bed
PEACH ANTIQUE G8
(details p. 35)



326-0009-A8
Bureau
FLORENTINE WHITE ANTIQUE A8
(details p. 38)



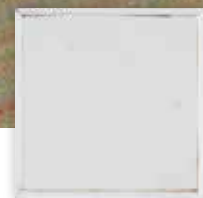
326-0081-G8
Half Round Night Stand
PEACH ANTIQUE G8
(details p. 39)



PEACH ANTIQUE G8



FLORENTINE WHITE ANTIQUE A8



FLORENTINE WHITE
ANTIQUE A8



HBK-7350-A8
Half Bunk Bed

FLORENTINE WHITE ANTIQUE A8
 (details p. 36)

shown on p. 26 with TSU-0069-A8
 Underbed Trundle Unit
 (details p. 37)



Go from bedroom to sleepover central in an instant with a simple pull out trundle bed.



326-0007-A8
Vanity/Computer Desk
 FLORENTINE WHITE ANTIQUE A8
 (details p. 38)

shown on p. 26 with
 WAL-8280-A8 Drawer Bookcase,
 WAL-8120-A8 Storage Hutch
 (details p. 41)



When not hosting sleepovers, Sophia plays a mean "Mississippi Hot Dog."



CHR-0072-A8
Student Chair
 FLORENTINE WHITE ANTIQUE A8
 (details p. 40)

WALL UNITS

Create storage central with our customizable wall units. Choose from a range of bookcases and storage hutches to create your base. Then pair it with whatever you need. Baby's room? Choose a dresser with a changing station. Tween haven? Tuck a cozy bed between bookcases. Study time? Fit a desk within arms reach of all their essentials. The best part is that no matter where you start, your storage can grow right along with your child.

WAL-8280-A8
Drawer Bookcase
 FLORENTINE WHITE ANTIQUE A8
 (details p. 41)

WAL-8120-A8
Storage Hutch
 FLORENTINE WHITE ANTIQUE A8
 (details p. 41)

WAL-8290-A8
Door Bookcase
 FLORENTINE WHITE ANTIQUE A8
 (details p. 41)

CHS-3300-A8
Changing Station
 FLORENTINE WHITE ANTIQUE A8
 (details p. 38)

326-0001-A8
Single Dresser
 FLORENTINE WHITE ANTIQUE A8
 (details p. 38)



WAL-8280-A8
Drawer Bookcase
 FLORENTINE WHITE ANTIQUE A8
 (details p. 41)

WAL-8120-A8
Storage Hutch
 FLORENTINE WHITE ANTIQUE A8
 (details p. 41)

WAL-8290-A8
Door Bookcase
 FLORENTINE WHITE ANTIQUE A8
 (details p. 41)

BED-5333-A8
Twin Cameo Low Post Panel Bed
 FLORENTINE WHITE ANTIQUE A8
 (details p. 35)

shown with Low Profile Footboard LPF-3285
 (details p. 37)





WAL-8260-V8
Narrow Bookcase
 SEA GRASS ANTIQUE V8
 (details p. 41)

WAL-8120-V8
Storage Hutch
 SEA GRASS ANTIQUE V8
 (details p. 41)

WAL-8260-V8
Narrow Bookcase
 SEA GRASS ANTIQUE V8
 (details p. 41)

CHS-3300-V8
Changing Station
 SEA GRASS ANTIQUE V8
 (details p. 38)

WAL-8190-V8
Large Console
 SEA GRASS ANTIQUE V8
 (details p. 41)



WAL-8280-A8
Drawer Bookcase
 FLORENTINE WHITE ANTIQUE A8
 (details p. 41)

WAL-8120-A8
Storage Hutch
 FLORENTINE WHITE ANTIQUE A8
 (details p. 41)

WAL-8290-A8
Door Bookcase
 FLORENTINE WHITE ANTIQUE A8
 (details p. 41)

WAL-8220-A8
Writing Desk
 FLORENTINE WHITE ANTIQUE A8
 (details p. 40)

CHR-0072-A8
Student Chair
 FLORENTINE WHITE ANTIQUE A8
 (details p. 40)



LAVENDER
ANTIQUE T8



FLORENTINE WHITE
ANTIQUE A8



BED-5334-T8
Double Cameo Low Post Bed
LAVENDER ANTIQUE T8
(details p. 35)



326-0081-A8
Half Round Night Stand
FLORENTINE WHITE ANTIQUE A8
(details p. 39)



326-0032-A8
Vertical Mirror
FLORENTINE WHITE ANTIQUE A8
(details p. 40)

326-0002-T8
Dresser
LAVENDER ANTIQUE T8
(details p. 38)

326-0013-T8
Bookcase
LAVENDER ANTIQUE T8
(details p. 39)

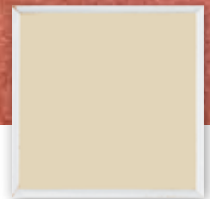




BED-5613-H8
Twin Poster Bed with Framed Top
SHELL ANTIQUE H8
(curtains not included, details p. 36)



SECRETARY NO LONGER AVAILABLE.



SHELL ANTIQUE H8

CRIBS



BTG-2000 BUILT TO GROW SLAT CRIB

Mattress platform has two height adjustments

Ends have openings for bumper ties

Overall: 30 11/16W 51 1/2H 58L
(78 x 131 x 147 cm)

BTK-3230 Toddler Bed Kit

Purchase converts crib to toddler bed/daybed

Includes toddler bed rail and frame

56 1/4W 1 3/16D 36 3/8H (143 x 3 x 92 cm)

BTF-3235 Built to Grow Conversion Kit

Purchase converts crib to 4/6 double bed

Consists of RLS-0050 3/3-4/6 Pair of Hook on Rails

SLR-0468 4/6 Slat Roll

4/6 bed will accommodate PSR-3267

Safety Rails

Can be used as headboard only with metal bed frame

Accommodates underbed storage options

When converted to 4/6 bed:

58 3/8W 51 1/2H 79 5/8L
(148 x 131 x 202 cm)

SEE PAGES 8, 9



BTG-2800 BUILT TO GROW PANEL/DECORATIVE TURNING CRIB

Mattress platform has two height adjustments

Ends and headboard have openings for bumper ties

Overall: 30 1/2W 53 13/16H 57 1/2L
(77 x 137 x 146 cm)

BTK-3230 Toddler Bed Kit

Purchase converts crib to toddler bed/daybed

Includes toddler bed rail and frame

56 1/4W 1 3/16D 36 3/8H (143 x 3 x 92 cm)

BTF-3235 Built to Grow Conversion Kit

Purchase converts crib to 4/6 double bed

Consists of RLS-0050 3/3-4/6 Pair of Hook on Rails

SLR-0468 4/6 Slat Roll

4/6 bed will accommodate PSR-3267

Safety Rails

Can be used as headboard only with metal bed frame

WILL NOT ACCOMMODATE UNDERBED STORAGE OPTIONS

When converted to 4/6 bed:

57 7/8W 52 1/8H 79 1/4L
(147 x 132 x 201 cm)

SEE PAGE 6



SSC-1200 STATIONARY CRIB

Mattress platform has two height adjustments

Ends have openings for bumper ties

STK-3435 Stationary Toddler Kit
Purchase converts crib to toddler bed/daybed includes toddler bed rail and frame

37 7/8W 15 1/8H (96 x 38 cm)

Overall: 31 3/8W 50 3/4H 56 1/8L
(80 x 129 x 143 cm)

SEE PAGES 10, 11

NOTE: Young America may find it necessary to make changes to prices, colors, materials, equipment and specifications at any time or even discontinue certain items. We'll try not to, but our lawyers say we have to let you know that it could happen.

**BED-5323 TWIN LOW POST PANEL BED****HBD-5323 Low Post Panel Headboard 3/3**

bored for metal frame
41 5/8W 52 1/2H (106 x 133 cm)

FTB-5323 Low Post Panel Footboard 3/3

41 5/8W 36 1/8H (106 x 92 cm)

RLS-0050 Pair Wood Rails

3/3-4/6 (Hook)
5 1/4H 76L (13 x 193 cm)

SLR-O368 Slat Roll 3/3

bottom of side rail to floor: low lock
7 1/2H (19 cm)
bottom of side rail to floor: high lock
13 1/2H (34 cm)

Overall: 41 5/8W 52 1/2H 82L
(106 x 133 x 208 cm)

SEE PAGES 14, 15, 22, 23

**BED-5324 DOUBLE LOW POST PANEL BED****HBD-5324 Low Post Panel Headboard 4/6**

bored for metal frame
56 5/8W 55 1/2H (144 x 141 cm)

FTB-5324 Low Post Panel Footboard 4/6

56 5/8W 38 1/8H (144 x 97 cm)

RLS-0050 Pair Wood Rails

3/3-4/6 (Hook)
5 1/4H 76L (13 x 193 cm)

SLR-O468 Slat Roll 4/6

bottom of side rail to floor: low lock
7 1/2H (19 cm)
bottom of side rail to floor: high lock
13 1/2H (34 cm)

Overall: 56 5/8W 55 1/2H 82 11/16L
(144 x 141 x 210 cm)

SEE PAGES 18, 19

**BED-5325 QUEEN LOW POST PANEL BED****HBD-5325 Low Post Panel Headboard 5/0**

bored for metal frame
63 5/8W 55 1/2H (162 x 141 cm)

FTB-5325 Low Post Panel Footboard 5/0

63 5/8W 38 1/8H (162 x 97 cm)

RLS-0051 Pair Wood Rails

5/0 (Hook)
5 1/4H 82L (13 x 208 cm)

bottom of side rail to floor: low lock only
7 1/2H (19 cm)

Overall: 63 5/8W 55 1/2H 88L
(162 x 141 x 224 cm)

**BED-5333 TWIN CAMEO LOW POST PANEL BED****HBD-5333 Cameo Low Post Headboard 3/3**

bored for metal frame
42 7/16W 52H (108 x 132 cm)

FTB-5333 Cameo Low Post Footboard 3/3

42 7/16W 36H (108 x 91 cm)

RLS-0050 Pair Wood Rails

3/3-4/6 (Hook)
5 1/4H 76L (13 x 193 cm)

SLR-O368 Slat Roll 3/3

bottom of side rail to floor: low lock
7 1/2H (19 cm)
bottom of side rail to floor: high lock
13 1/2H (34 cm)

Overall: 42 7/16W 52H 81 1/4L
(108 x 132 x 206 cm)

SEE COVER, PAGES 16, 17, 28

**BED-5334 DOUBLE CAMEO LOW POST PANEL BED****HBD-5334 Cameo Low Post Headboard 4/6**

57 7/16W 53H (146 x 135 cm)

FTB-5334 Cameo Low Post Footboard 4/6

57 7/16W 37H (146 x 94 cm)

RLS-0050 Pair Wood Rails

3/3-4/6 (Hook)
5 1/4H 76L (13 x 193 cm)

SLR-O468 Slat Roll 4/6

bottom of side rail to floor: low lock
7 1/2H (19 cm)
bottom of side rail to floor: high lock
13 1/2H (34 cm)

Overall: 57 7/16W 53H 81 1/4L
(146 x 135 x 206 cm)

SEE INSIDE FRONT COVER, PAGES 1, 30, 31

**BED-5343 TWIN PANEL BED****HBD-5343 Panel Headboard 3/3**

42 5/8W 52 1/8H (108 x 132 cm)

FTB-5343 Panel Footboard 3/3

42 5/8W 32 1/8H (108 x 82 cm)

RLS-0050 Pair Wood Rails

3/3-4/6 (Hook)
5 1/4H 76L (13 x 193 cm)

SLR-O368 Slat Roll 3/3

bottom of side rail to floor: low lock
7 1/2H (19 cm)
bottom of side rail to floor: high lock
13 1/2H (34 cm)

THIS BED DOES NOT RECEIVE STRIPING

Overall: 42 5/8W 52 1/8H 78 7/8L
(108 x 132 x 200 cm)

SEE PAGES 12, 13, 24, 25

**BED-5344 DOUBLE PANEL BED****HBD-5344 Panel Headboard 4/6**

57 5/8W 52 1/2H (146 x 133 cm)

FTB-5344 Panel Footboard 4/6

57 5/8W 32 3/8H (146 x 82 cm)

RLS-0050 Pair Wood Rails

3/3-4/6 (Hook)
5 1/4H 76L (13 x 193 cm)

SLR-O468 Slat Roll 4/6

bottom of side rail to floor: low lock
7 1/2H (19 cm)
bottom of side rail to floor: high lock
13 1/2H (34 cm)

THIS BED DOES NOT RECEIVE STRIPING

Overall: 57 5/8W 52 1/2H 78 7/8L
(146 x 133 x 200 cm)



BEDS/BUNK BEDS



BED-5613 TWIN PANEL POSTER BED WITH FRAMED TOP

HBD-5613 Panel Poster Headboard 3/3
41 5/8W 53 1/2H (106 x 136 cm)

FTB-5613 Panel Poster Footboard 3/3
41 5/8W 36 1/8H (106 x 92 cm)

RLS-0057 Pair Wood Rails
3/3 (Hook) and poster bed frame 3/3

SLR-0368 Slat Roll 3/3
bottom of side rail to floor: low lock
7 1/2H (19 cm)
bottom of side rail to floor: high lock
13 1/2H (34 cm)

Overall: 41 5/8W 82 1/2H 82L
(106 x 210 x 208 cm)

SEE PAGES 32, 33



BED-5614 DOUBLE PANEL POSTER BED WITH FRAMED TOP

HBD-5614 Panel Poster Headboard 4/6
56 5/8W 55 1/2H (144 x 141 cm)

FTB-5614 Panel Poster Footboard 4/6
56 5/8W 38 1/8H (144 x 97 cm)

RLS-0058 Pair Wood Rails
4/6 (Hook) and poster bed frame 4/6

SLR-0468 Slat Roll 4/6
bottom of side rail to floor: low lock
7 1/2H (19 cm)
bottom of side rail to floor: high lock
13 1/2H (34 cm)

Overall: 56 5/8W 82 1/2H 82L
(144 x 210 x 208 cm)



HBK-7350 TWIN HALF BUNK BED

TBE-7300 One Set of Bunk Ends 3/3

RLS-0052 Pair Wood Rails
3/3-4/6 (Bolt)
5 1/4H 76L (13 x 193 cm)

SLR-0368 Slat Roll 3/3
bottom of side rail to floor: low lock
7H (18 cm)
bottom of side rail to floor: high lock
13 1/2H (34 cm)

Overall: 42 7/8W 45 13/16H 81 1/4L
(109 x 116 x 206 cm)

SEE PAGES 26, 27

To convert to Twin Bunk Bed:
HBC-7300 Half Bunk Conversion to Twin Bunk Bed

TBE-7300 One Set of Bunk Ends 3/3

RLS-0052 Pair Wood Rails
3/3-4/6 (Bolt)
5 1/4H 76L (13 x 193 cm)

SLR-0368 Slat Roll 3/3

LAD-0769 Bunk Ladder

GRL-0800 One Set of Bunk Guard Rails



HBK-7450 DOUBLE HALF BUNK BED

DBE-7400 One Set of Bunk Ends 4/6

RLS-0052 Pair Wood Rails
3/3-4/6 (Bolt)
5 1/4H 76L (13 x 193 cm)

SLR-0468 Slat Roll 4/6
Overall: 57 3/8W 46 1/8H 81 1/4L
(146 x 117 x 206 cm)

To convert to Double over Double Bunk Bed:
HBC-7400 Half Bunk Conversion to Double Bunk Bed

DBE-7400 One Set of Bunk Ends 4/6

RLS-0052 Pair Wood Rails
3/3-4/6 (Bolt)
5 1/4H 76L (13 x 193 cm)

SLR-0468 Slat Roll 4/6

LAD-0769 Bunk Ladder

GRL-0800 One Set of Bunk Guard Rails



BNK-7300 TWIN BUNK BED

**** (2) TBE-7300 One Set Bunk Ends 3/3**

RLS-0773 Two Pair Wood Rails
(Bolt), one pair guard rails, two slat rolls 3/3

LAD-0769 Bunk Ladder

headboard: 42 7/8W 45 3/4H (109 x 116 cm)
footboard: 42 7/8W 39 5/8H (109 x 101 cm)
bottom of side rail to floor: low lock
7H (18 cm)
bottom of side rail to floor: high lock
13 1/2H (34 cm)

Overall: 42 3/8W 78H 81 1/4L
(108 x 198 x 206 cm)

SEE PAGES 20, 21



BNK-7400 DOUBLE OVER DOUBLE BUNK BED

**** (2) DBE-7400 One Set Bunk Ends 4/6**

RLS-0778 Two Pair Wood Rails
(Bolt), one pair guard rails, two slat rolls 4/6

LAD-0769 Bunk Ladder

headboard: 57 3/8W 46 1/8H (146 x 117 cm)
footboard: 57 3/8W 40H (146 x 102 cm)
bottom of side rail to floor: low lock
7H (18 cm)
bottom of side rail to floor: high lock
13 1/2H (34 cm)

Overall: 57 3/8W 80H 81 1/4L
(146 x 203 x 206 cm)



TOF-8300 TWIN OVER DOUBLE BUNK BED

**** (2) TBE-7300 One Set Bunk Ends 3/3**

RLS-0773 Two Pair Wood Rails
(Bolt), one pair guard rails, two slat rolls 3/3

SLR-0468 Slat Roll 4/6

bottom of side rail to floor: low lock
7H (18 cm)
bottom of side rail to floor: high lock
13 1/2H (34 cm)

TFK-0571 Extension Kit and Bunk Ladder

See measurements above for BNK-7300

Overall: 57 7/8W 79 5/8H 81 3/4L
(147 x 202 x 208 cm)



** Must order two sets of ends to make a complete bunk bed

Bed Accessories

The following items are for use only with select beds from Isabella.



LPF-3285 LOW PROFILE FOOTBOARD 3/3
43W 20 1/4H (109 x 51 cm)
Will accommodate underbed storage options
SEE PAGES 22, 23, 28



LPF-3290 LOW PROFILE FOOTBOARD 4/6
58W 20 1/4H (147 x 51 cm)
Will accommodate underbed storage options



TSU-0069 UNDERBED TRUNDLE UNIT
Can also be used with 4/6 double bed.
Finished inside and out on all four sides; casters.
75W 40D 13H (191 x 102 x 33 cm)
SEE PAGES 26, 27

TFK-0571 EXTENSION KIT AND BUNK LADDER
Use with BNK-7300 to create twin over full bunk; a SLR-0468 slat roll 4/6 is required.



BTK-3230 TODDLER BED KIT
For use with Built to Grow Cribs.
Includes toddler bed rail and frame.
56 1/4W 13 1/16D 36 3/8H (143 x 3 x 92 cm)



STK-3435 STATIONARY TODDLER KIT
For use with Stationary Side Cribs.
Includes toddler bed rail and frame.
37 7/8W 15 1/8H (96 x 38 cm)



PSR-3267 PAIR SAFETY RAILS
47W 16 1/2H (119 x 42 cm)
SEE PAGES 12, 13



USS-0097 UNDERBED SPACE SAVER
upper position: 72W 38D 15 1/2H (183 x 97 x 39 cm)
lower position: 72W 38D 5H (183 x 97 x 13 cm)

BTF-3235 BTG 4/6 DOUBLE BED CONVERSION KIT
RLS-0050 Pair Wood Rails 3/3-4/6 (Hook)
5 1/4H 76L (13 x 193 cm)
SLR-0468 Slat Roll 4/6

RLS-0050 PAIR WOOD RAILS
5 1/4H 76L (13 x 193 cm)
SLR-0368 SLAT ROLL 3/3
SLR-0468 SLAT ROLL 4/6

Bed Requirements

Crib Standard

Standard crib size mattress, 51 5/8 L 27 1/4 W (131 x 69 cm), with a thickness not exceeding 6" (15 cm)

Twin Bed

Standard twin size (3/3) mattress and box spring or twin size mattress with twin size slat roll

Double Bed

Standard double size (4/6) mattress and box spring or double size mattress with double size slat roll

Queen Bed

Standard queen size (5/0) mattress and box spring

Headboard Only

Use a mattress and box spring which correspond in size to size of headboard and a metal bed frame which attaches to the headboard.

Bunk Bed

Two standard twin size (3/3) mattresses (no bunkie board necessary with use of slat roll). The 3/3 Twin Bunk Beds include two 0368 3/3 Slat Rolls. (9" maximum thickness for mattress)

Double Over Double Bunk Bed

Two double size (4/6) mattresses (no bunkie board necessary with use of slat roll). The 4/6 Double Bunk Beds include two 0468 4/6 Slat Rolls. (9" maximum thickness for mattress)

Underbed Trundle Unit

Standard twin size (3/3) mattress (no bunkie board needed; 8 1/2" maximum thickness for mattress)

Underbed Space Saver

Standard twin size (3/3) mattress

DRESSERS/CHESTS



326-0001 SINGLE DRESSER

Four drawers, accommodates CHS 3300 changing station

46 3/4W 19 1/2D 34 1/16H (119 x 50 x 87 cm)

SEE PAGES 6, 7, 16, 17, 28



326-0004 DRESSING CHEST

Four drawers

40W 19 1/2D 38H (102 x 50 x 97 cm)

SEE PAGES 10, 11, 22, 23



326-0009 BUREAU

Consists of:

326-0109 Trifold Mirror

326-0209 Bureau

50W 19 1/2D 39 3/4H (127 x 50 x 101 cm)

Eleven drawers

center plate: 16 1/4W 36 5/16H (41 x 92 cm)
end plates: 9 1/2W 23 1/4H (24 x 59 cm)

Overall: 50W 19 1/2D 74H
(127 x 50 x 188 cm)

SEE PAGES 24, 25



326-0002 DRESSER

Seven drawers, accommodates CHS 3300 changing station

56W 19 1/2D 33H (142 x 50 x 84cm)

SEE COVER, INSIDE FRONT COVER,
PAGES 8, 9, 30, 31



326-0007 VANITY/COMPUTER DESK

Four drawers, center drawer has drop front for keyboard, one stationary shelf

55W 20D 30H (140 x 51 x 76 cm)

SEE PAGES 26, 27



326-0012 CHEST

Five drawers

40W 19 1/2D 52H (102 x 50 x 132 cm)

SEE PAGES 18, 19



CHS-3300 CHANGING STATION

Use with most Young America dressers.
Includes pad and safety strap.

43 1/4W 18 3/4D 9 1/2H (110 x 48 x 24 cm)

SEE PAGES 6, 7, 8, 9, 28, 29

BOOKCASE/ARMOIRES/CHESTS/NIGHT STANDS



326-0013 BOOKCASE

One drawer, two adjustable shelves, two cord holes

34W 17D 54H (86 x 43 x 137 cm)

SEE PAGE 31



326-0018 ARMOIRE

Two doors, behind doors: removable clothing rod, cork on back of left door, mirror on back of right door, two adjustable shelves, one cord hole, two tray drawers

TV area:

33W 19 3/16D 39 11/16H (84 x 49 x 101 cm)

Overall: 42W 24D 72 1/4H (107 x 61 x 184 cm)

SEE PAGE 12



326-0080 NIGHT STAND

One drawer, one stationary shelf, one cord hole

23W 16D 25H (58 x 41 x 64 cm)



326-0081 HALF ROUND NIGHT STAND

One drawer, one stationary shelf

24W 16D 26H (61 x 41 x 66 cm)

SEE PAGES 1, 24, 25, 30, 31



326-0014 ARMOIRE

Gallery top, one mirrored door, one drawer

Behind door: one clothing rod, one adjustable shelf, one stationary shelf, one cord hole

28W 20 7/8D 72 7/16H (71 x 53 x 184 cm)

SEE PAGE 10



326-0082 NIGHT STAND

Three drawers

23W 17D 29H (58 x 43 x 74 cm)

SEE COVER, PAGES 12, 13, 16, 17, 18, 19



MIRRORS/HUTCHES/DESKS/CHAIRS



326-0033 CHEVAL MIRROR

Plate: 16 1/2W 51 11/16H (42 x 131 cm)
Overall: 25W 21D 68H (64 x 53 x 173 cm)

SEE PAGES 12, 13



MIR-3100 TILT MIRROR

One drawer with black felt liner
Plate: 20 1/8W 23 1/8H (51 x 59 cm)
Overall: 30 1/4W 10 11/16D 33 15/16H (77 x 27 x 86 cm)

SEE PAGES 22, 23



WAL-8220 WRITING DESK

Two drawers, one drop front, one stationary shelf

Overall: 48 5/8W 22 1/2D 30H (124 x 57 x 76 cm)

SEE PAGE 29



326-0032 VERTICAL MIRROR

Plate: 24W 36H (61 x 91 cm)
Overall: 28 1/2W 43H (72 x 109 cm)

SEE INSIDE FRONT COVER, PAGES 30, 31



MIR-3180 OVAL MIRROR

Plate: 23 1/4W 35 3/16H (59 x 89 cm)
Overall: 26W 40 3/16H (66 x 102 cm)

SEE PAGES 16, 17



326-0226 COMPUTER DESK

Drop front pullout keyboard drawer, one utility drawer, one file drawer, accommodates 326-0224 Large Hutch

51 3/4W 24D 30H (131 x 61 x 76 cm)

SEE PAGES 20, 21



326-0224 LARGE HUTCH

Gallery top, one stationary shelf, two doors, three cord holes, two stationary shelves with dividers, cord management opening
47 1/2W 14D 49 1/2H (121 x 36 x 126 cm)

SEE PAGES 20, 21



CHR-0072 STUDENT CHAIR

Coastal Cloud fabric

17W 19 1/4D 38 1/4H (43 x 49 x 97 cm)

SEE PAGES 26, 27, 29



WAL-8190 LARGE CONSOLE

Four adjustable shelves, four cord holes, two storage drawers

48 3/8W 19 1/4D 34H (124 x 49 x 86 cm)

SEE PAGE 29



WAL-8270 OPEN BOOKCASE

Two stationary shelves, three adjustable shelves, two cord holes, cord management opening, mending plate kit

30W 15 7/16D 78 1/4H (76 x 39 x 199 cm)



WAL-8290 DOOR BOOKCASE

One stationary shelf, two adjustable shelves, two cord holes, cord management opening, two doors, one adjustable shelf behind doors, mending plate kit

30W 15 7/16D 78 1/4H (76 x 39 x 199 cm)



WAL-8260 NARROW BOOKCASE

Two adjustable shelves, two stationary shelves, two cord holes, cord management opening, two drawers, mending plate kit

16 1/16W 15 7/16D 78 1/4H (41 x 39 x 199 cm)

SEE PAGE 29



WAL-8280 DRAWER BOOKCASE

Two adjustable shelves, two stationary shelves, two cord holes, cord management openings, two drawers, mending plate kit

30W 15 7/16D 78 1/4H (76 x 39 x 199 cm)

SEE PAGES 26, 27, 28, 29



WAL-8120 STORAGE HUTCH

Two vertical partitions, two cord holes, attachment brackets, accommodates 3/3 bed in wall system

48 3/4W 15 7/16D 15 3/8H (124 x 39 x 39 cm)

SEE PAGES 26, 27, 28, 29



WAL-8230 LARGE STORAGE HUTCH

Two stationary vertical partitions, two cord holes, attachment brackets, accommodates 4/6 bed in wall system

63 3/4W 15 7/16D 15 3/8H (162 x 39 x 39 cm)



join the club

Becoming a member of the Y.A. Club is the best way to experience all that Young America has to offer. We'll update you on new product introductions, give you chances to win future discounts, keep you posted on your purchases and allow you to create your own wish list of Young America products.



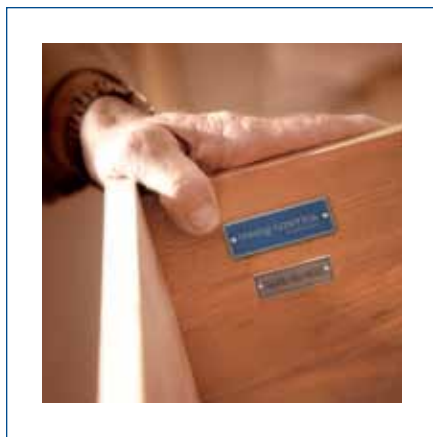
BUILD YOUR WISH LIST

As you browse youngAmerica.com, add items to your wish list. Then you can share your wish list with family and friends or your preferred retailer. Print it out or email it to the grandparents!

REGISTER YOUR PURCHASES

To ensure that you're always up to date, register your purchases here on youngAmerica.com. In the event we add or discontinue items or collections, we'll notify you so you can locate what you want or need to round out your child's room.

Register today at youngAmerica.com/account/signup



AN AMERICAN FURNITURE MANUFACTURER
SINCE 1924

youngAmerica®
MADE IN THE USA 

YOUNG AMERICA IS A REGISTERED TRADEMARK OF STANLEY FURNITURE COMPANY, INC.
P.O. BOX 30 • 1641 FAIRSTONE PARK HWY • STANLEYTOWN, VA 24168
youngAmerica.com