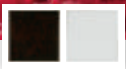


HAMPTON POINTE



youngAmerica®  
MADE IN THE USA 

HAMPTON POINTE IS WHERE OCEAN VIEW meets urban loft. With its perfect balance of cottage simplicity and sleek downtown chic, Hampton Pointe is equally at home in traditional or contemporary settings; making it the ideal collection to grow with your child's changing tastes.

Updated traditional Sheraton hardware creates the transitional aspect of this design and offers a nice contrast to its sleek, yet soft, cottage design. The dark espresso finish evokes a contemporary feel, while the traditional piano key white speaks to a more laid-back cottage feel.

Shingle style doors and bed panels highlight the collection's carefree beach-going roots, while modern bookcase platform beds conjure more sophisticated functionality.

Like all Young America furniture, Hampton Pointe is made in the USA, delivering unequalled safety, quality and style. Plus, our product is GREENGUARD® Certified—which means they meet the most stringent chemical emissions standards in the world.

Explore all the design possibilities of Hampton Pointe.



# HAMPTON POINTE



# IN THE DETAILS

BEAUTY IS IN THE DETAILS and that's especially true with this collection. Crafted from wood that's harvested exclusively from sustainable forests in North America, Hampton Pointe is just one example of how we're able to reduce our carbon footprint on the environment by not importing lumber from a foreign source. Take a closer look at what makes Hampton Pointe such a natural beauty.

## Finish / Wood Characteristics

**Espresso Antique** – Crafted of Northern hardwood Maple with select hardwood solids and maple veneers. Hand finished in dark rich espresso.

**Piano Key White Antique** – Crafted of Poplar with select hardwood solids and veneers. Finish features dry brushing for an antique look.

stain



ESPRESSO ANTIQUE 19

paint



PIANO KEY WHITE ANTIQUE E6

## Quality Cues



### WOODEN MATTRESS PLATFORM

An attached wooden mattress platform further insures the safety of your little one. Because their security gives you sweet dreams.

It's one thing to claim quality and another to prove it.

Look for these telltale signs of quality in all Young America furniture:

- ✔ Wooden mattress platform for all cribs
- ✔ Dovetail drawers front and back
- ✔ Clear coated, finished drawers
- ✔ Corner blocked under drawer construction
- ✔ Automatic drawer stops
- ✔ Dust panel between each drawer
- ✔ Solid hardwood corner blocks are glued and fastened in place with screws to strengthen the cases and chairs
- ✔ Finished and screwed on back panels
- ✔ Adjustable levelers
- ✔ Tip restraints on all taller cases



### DOVETAILING

Old-fashioned craftsmanship for strength and lasting fit



### WOOD CORNER BLOCKS

Grooved, glued and fastened in place with screws for the most sturdy fits



### SCREWED-IN BACK PANELS

Screws, not staples, provide added strength and stability



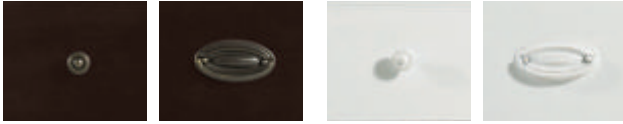
### ADJUSTABLE LEVELERS

Adjustable inserts allow for easy set-up in older homes where floors may not be exactly level

## Hardware

---

Blending traditional style with a contemporary flair, Sheraton hardware gets an update with a brushed nickel finish.



BRUSHED NICKEL HARDWARE

PAINTED HARDWARE

## Committed to Safety

---

Young America is committed to making beautiful, high quality furniture. Our standard of safety is the highest you can buy for your child.



**Intertek**

Look for the “Intertek Check” when buying a new crib.



GREENGUARD Certification sets the most stringent indoor air quality standards in the world.

## Made in the USA

---



Young America is committed to being the brand you can trust. As such, we assure you that the safety of our products is foremost in every decision we make. In some instances a small number of certain component parts such as assembly hardware or wood slats for mattress support may originate outside the U.S. and subsequently be assembled, finished and/or packaged by us in our domestic factories. In such cases, we incorporate these components only when we are 100% satisfied that they meet our stringent safety and quality standards. The Young America brand goes on nothing that we have not tested with our own rigorous manufacturing standards and processes.





# built to grow™



BTG-2000-19, Build to Grow Slat Crib (details p. 28)  
ESPRESSO ANTIQUE 19



Additional items may be needed to convert crib as displayed. Please consult your retailer.

Children grow. Needs change. Taste evolves. Style transforms. In fact, the one thing you can count on with children is change. That's why we build Hampton Pointe—and all Young America furniture—with the ability to adapt to all the changes your child will face.

From the infant safe haven to the rough and tumble world of toddlers, from the multi-use play/chill space of tweens to the uber-private world of teens, your child's room reflects the stages of their lives. Hampton Pointe offers a range of sleep storage and study options to see them through it all.

What's more, our commitment to quality construction means Hampton Pointe is built to withstand more than just the day-to-day rigors of childhood; it's built to endure the year-to-year tests of today's youth. Plus its strong, transitional lines stylishly accommodate decades of room makeovers.

**1**

**infant**

Your infant needs sleep. Focus on a safe, comforting environment where all the essentials are within reach.

**2**

**preschool**

Your preschooler is filled with curiosity. Choose furniture that promotes safe exploration, and can hold all the toys a young explorer needs.

**3**

**tween**

Your tween needs space to study and play. Focus on furniture that plays multiple roles, so the room doesn't become too crowded.

**4**

**teen**

Your teen needs storage, storage and storage. Make sure his or her refuge has space for everything so it doesn't end up on the floor.

Built to Grow cribs provide safety at every stage as they change with your child offering a full range of storage options to see them from infancy through toddler, tween and teenage years.





BTG-2400-19  
**Built to Grow Sleigh Crib**  
ESPRESSO ANTIQUE 19  
(details p. 28)



717-0011-19  
**Nook and Cranny Chest**  
ESPRESSO ANTIQUE 19  
(details p. 31)



Traditional Sheraton hardware gets updated with a more contemporary brushed nickel finish.



717-0032-19  
**Square Mirror**  
(details p. 31)



717-0002-19  
**Double Dresser**  
ESPRESSO ANTIQUE 19  
(details p. 31)



ESPRESSO  
ANTIQUÉ 19

PIANO KEY WHITE  
ANTIQUE E6



Our stationary cribs also morph from crib to toddler bed to daybed.

Additional items may be needed to convert crib as displayed. Please consult your retailer.



SSC-1000-E6  
**Stationary Crib**  
PIANO KEY WHITE ANTIQUE E6  
(details p. 28)



CHS-3300-E6  
**Changing Station**

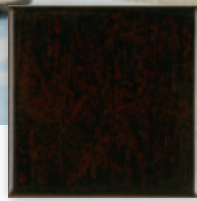
717-0001-E6  
**Single Dresser**  
PIANO KEY WHITE ANTIQUE E6  
(details p. 31)



He may look peaceful now, but Ryan is usually a bundle of non-stop energy. He loves peekaboo, patty cake and endless games of "How big is Ryan? He's 50000 big." That one gets him every time.



SSC-1400-19  
**Stationary Crib**  
ESPRESSO ANTIQUE 19  
(details p. 28)



ESPRESSO  
ANTIQUE 19



BED-5183-19  
**Twin Panel Bed**  
ESPRESSO ANTIQUE 19  
(details p. 28)

shown on p. 13 with PSR-3267-19  
Pair of Safety Rails  
(details p. 30)



717-0014-19  
**Door/Media Chest**  
ESPRESSO ANTIQUE 19  
(details p. 31)



717-0082-19  
**Night Stand**  
ESPRESSO ANTIQUE 19  
(details p. 31)



ESPRESSO  
ANTIQUÉ 19



A pull out trundle means there's always room for a sleepover.



HBD-5183-19  
**Twin Panel Headboard**  
 (details p. 28)

LPF-3285-19  
**Twin Low Profile Footboard**  
 ESPRESSO ANTIQUE 19  
 (details p. 30)

requires purchase of RLS-0050-19  
 Pair of Wood Rails and SLR-0368-00 Slat Roll

shown on p. 15 with a TSU-0069-19  
 Underbed Trundle Unit  
 (details p. 30)



717-0012-19  
**Drawer Chest**  
 ESPRESSO ANTIQUE 19  
 (details p. 31)



717-0081-19  
**Night Stand**  
 ESPRESSO ANTIQUE 19  
 (details p. 31)





ESPRESSO  
ANTIQUE 19



BED-5983-19  
**Twin Bookcase Bed**  
ESPRESSO ANTIQUE 19  
(details p. 29)

double bed also available as shown on p. 17



717-0032-19  
**Square Mirror**

717-0002-19  
**Double Dresser**  
ESPRESSO ANTIQUE 19  
(details p. 31)



When it was time to move to a big bed, Josh skipped right past a twin and settled into a double. After all, where else would Sadie sleep?





Captain's Drawers turn sleep space into storage space.



**BNK-7320-E6  
Twin Bunk Bed**

PIANO KEY WHITE ANTIQUE E6  
(details p. 29)

shown on p. 19 with 717-0279-E6  
Captain's Storage Drawers  
(details p. 30)



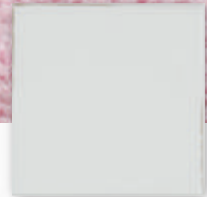
Finials included to allow conversion  
to two half bunks.



**717-0224-E6  
Large Hutch**  
(details p. 32)

**717-0226-E6  
Computer Desk**  
(details p. 32)

**CHR-0070-E6  
Student Chair**  
PIANO KEY WHITE ANTIQUE E6  
(details p. 32)



PIANO KEY WHITE  
ANTIQUÉ E6

WAL-8260-E6  
**Narrow Bookcase**  
(baskets sold separately,  
details p. 33)

WAL-8120-E6  
**Storage Hutch**  
(details p. 33)

WAL-8290-E6  
**Door Bookcase**  
(baskets sold separately,  
details p. 33)

WAL-8220-E6  
**Writing Desk**  
PIANO KEY WHITE ANTIQUE E6  
(details p. 32)

BSK-0434-00  
**Marimba Abaca Basket  
with Liner**  
(details p. 33)



Drop down keyboard drawer adds  
ergonomic functionality.



CHR-0070-E6  
**Student Chair**  
PIANO KEY WHITE ANTIQUE E6  
(details p. 32)



PIANO KEY WHITE  
ANTIQUÉ E6

# WALL UNITS

Create storage central with our customizable wall units. Choose from a range of bookcases and storage hutches to create your base. Then pair it with whatever you need. Baby's room? Choose a dresser with a changing station. Tween haven? Tuck a cozy bed between bookcases. Study time? Fit a desk within arms reach of all their essentials. The best part is that no matter where you start, your storage can grow right along with your child.

- WAL-8270-E6  
**Open Bookcase**  
PIANO KEY WHITE ANTIQUE E6  
(baskets sold separately, p. 33)
- WAL-8120-E6  
**Storage Hutch**  
PIANO KEY WHITE ANTIQUE E6  
(details p. 33)
- WAL-8290-E6  
**Door Bookcase**  
PIANO KEY WHITE ANTIQUE E6  
(baskets sold separately, details p. 33)
- CHS-3300-E6  
**Changing Station**  
PIANO KEY WHITE ANTIQUE E6  
(details p. 31)
- 717-0001-E6  
**Single Dresser**  
PIANO KEY WHITE ANTIQUE E6  
(details p. 31)
- BSK-O434-00  
**Marimba Abaca Basket with Liner**  
(details p. 33)



- WAL-8280-19  
**Drawer Bookcase**  
ESPRESSO ANTIQUE 19  
(baskets sold separately, p. 33)
- WAL-8120-19  
**Storage Hutch**  
ESPRESSO ANTIQUE 19  
(details p. 33)
- WAL-8290-19  
**Door Bookcase**  
ESPRESSO ANTIQUE 19  
(baskets sold separately, details p. 33)
- BED-5983-19  
**Twin Bookcase Bed**  
ESPRESSO ANTIQUE 19  
(details p. 29)
- BSK-O434-00  
**Marimba Abaca Basket with Liner**  
(details p. 33)





WAL-8290-E6

**Door Bookcase**

PIANO KEY WHITE ANTIQUE E6  
(baskets sold separately, p. 33)

WAL-8120-E6

**Storage Hutch**

PIANO KEY WHITE ANTIQUE E6  
(details p. 33)

WAL-8270-E6

**Open Bookcase**

PIANO KEY WHITE ANTIQUE E6  
(baskets sold separately, details p. 33)

CHS-3300-E6

**Changing Station**

PIANO KEY WHITE ANTIQUE E6  
(details p. 31)

WAL-8190-E6

**Large Console**

PIANO KEY WHITE ANTIQUE E6  
(baskets sold separately, details p. 33)

BSK-0434-00

**Marimba Abaca Basket with Liner**

(details p. 33)



WAL-8280-19

**Drawer Bookcase**

ESPRESSO ANTIQUE 19  
(baskets sold separately, p. 33)

WAL-8120-19

**Storage Hutch**

ESPRESSO ANTIQUE 19  
(details p. 33)

WAL-8290-19

**Door Bookcase**

ESPRESSO ANTIQUE 19  
(baskets sold separately, details p. 33)

WAL-8220-19

**Writing Desk**

ESPRESSO ANTIQUE 19  
(details p. 32)

CHR-0070-19

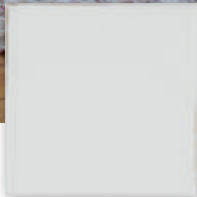
**Student Chair**

ESPRESSO ANTIQUE 19  
(details p. 32)

BSK-0434-00

**Marimba Abaca Basket with Liner**

(details p. 33)



PIANO KEY WHITE  
ANTIQUÉ E6



*Hailey was painting from the time she could sit up. Over time she graduated from fingers and paper to brush and canvas. With a true artist's soul, Hailey dreams exclusively in color.*



717-0082-E6  
**Night Stand**  
PIANO KEY WHITE ANTIQUE E6  
(details p. 31)



HBK-7370-E6  
**Twin Half Bunk Bed**  
PIANO KEY WHITE ANTIQUE E6  
(details p. 29)



Molding on the curved corner posts lends cozy cottage charm.



# Born here. Raised here. Without compromise.



**MADE IN THE  
USA**

Young America is committed to being the brand you can trust. As such, we assure you that the safety of our products is foremost in every decision we make. In some instances a small number of certain component parts such as assembly hardware or wood slats for mattress support may originate outside the U.S. and subsequently be assembled, finished and/or packaged by us in our domestic factories. In such cases, we incorporate these components only when we are 100% satisfied that they meet our stringent safety and quality standards. The Young America brand goes on nothing that we have not tested with our own rigorous manufacturing standards and processes.

## **SAFETY**

Young America not only meets, but also exceeds all mandatory safety regulations set by the Consumer Product Safety Commission (CPSC). The next level of product safety guidelines are voluntary. Groups such as the Juvenile Product Manufacturers Association



(JPMA) and the American Society of Testing and Materials (ASTM) create voluntary standards to guide the furniture industry, which we also exceed. But Young America doesn't stop there. In fact, our company is actively involved with the CPSC and ASTM in helping to fight for increased regulation and to make those standards even more strict.

Then there's the third level of safety assurance; and this is where Young America leads the industry. Intertek, the leading independent third party certification lab for safety and design, helps us go beyond testing, inspecting and certifying products. We reduce risk by incorporating manufacturing principles and processes that ensure consistency and reliability. We mitigate mistakes that can result in a quality or safety issue. Our work with Intertek has earned not only a reputation for value in our products, but an increased level of trust for the Young America brand. Our goal when it comes to safety is simple: We provide our customers with confidence. So look for the "Intertek Check" when you're buying a crib for your child. You'll certainly find it here.



## QUALITY

We've been making furniture since 1924. Young America is a work of art with engineering evident down to its core. We start with high quality American hardwoods and veneers from sustainable forests, then we build on the tradition of craftsmanship we've practiced for nearly a century. Look closely and you'll recognize these hallmarks of quality:

- Wooden mattress platforms for all cribs
- Mortise and tenon joints
- Dovetailed drawers in front and back
- Screwed (not stapled) back panels
- Adjustable levelers
- Dust panels
- Wood corner blocks

Keeping an eye on quality is easy when everything's made right under your nose.

## CHOICE AND COLOR

Indulge in free expression with Young America's vast array of colors, finishes and styles. In fact, we offer more pieces in more colors than we think you'll find anywhere. The choice is yours.

## GREEN

Kids spend nearly 85% of their time indoors, where the air can be two-to-five times more polluted than outdoor air thanks to toxic chemical emissions from everyday products like furniture, electronics, appliances and cleaners. GREENGUARD® Certification means our product has been independently tested to meet the most stringent chemical emissions standards in the world. What's more, by reducing packaging materials and recovering and reusing solvent materials, we reduce the amount of waste created in our manufacturing process.



As a founding member of the Sustainable Furnishings Council, Young America leads the industry in addressing our environmental challenges. We are proud members of Appalachian Hardwood Manufacturers Incorporated, procuring the vast majority of our lumber from within 300 miles of our factories. This supports domestic mills, not to mention our country's efforts towards reforestation.



Testing in dynamic environmental chamber where air flow simulates actual use.

Last, but certainly not least, by making our products in the USA, we're not polluting the air using fossil fuels to ship our products across oceans just to get it to you.

For more information, visit [youngAmerica.com](http://youngAmerica.com).

Look for the icons below in the product specification pages to learn more about the different features offered by Young America.



### DRAWER STOPS

Heavy-duty metal guides slide smoothly, prevent warping and offer patented automatic stops preventing dangerous spills.



### HI-LO BEDRAIL LOCKING SYSTEM

Hi-lock position raises the bed to accommodate underbed storage or sleep options. Or, select the Lo-lock position and add our

PSR-0267 Pair Safety Rails to easily convert most twin and double beds to a transition bed.



### ADJUSTABLE LEVELERS

Adjustable inserts allow for easy set-up in older homes where floors may not be exactly level.



### SLAT-ROLL MATTRESS SUPPORT

Handy when underbed options are utilized, and bed rails are in Hi-lock position or a transition bed configuration. Each wood slat

fastens with screws providing support without the need for a box spring or a bunkie board. Your mattress rests directly on the slat roll.



### TIP RESTRAINTS

Taller cases feature our anti-tipping kit that can secure the backs of cases to the wall deterring dangerous tipping.



### ELECTRONICS READY

Openings in convenient but discreet places that allow cords to pass through.



### CAPTAIN'S STORAGE DRAWERS

Recognizing kid's rooms are often small, this storage option helps save valuable floor space.



### UNDERBED SPACE SAVER

A useful and easy option when a quick need for additional sleep space is needed.



### UNDERBED TRUNDLE UNIT

Provides additional sleep and storage room when space is at a premium.

# CRIBS/BEDS



## BTG-2000 BUILT TO GROW SLAT CRIB

Mattress platform has two height adjustments  
Ends have openings for bumper ties

Overall: 30 11/16W 51 1/2H 58L  
(78 x 131 x 147 cm)

### BTK-3230 Toddler Bed Kit

Purchase converts crib to toddler bed/daybed  
Includes toddler bed rail and frame

### BTF-3235 Built to Grow Conversion Kit

Purchase converts crib to 4/6 double bed  
Consists of RLS-0050 3/3-4/6 Pair of Hook  
on Wood Rails

SLR-0468 4/6 Slat Roll

4/6 bed will accommodate PSR-3267  
Safety Rails

Can be used as headboard only with metal  
bed frame

Accommodates underbed storage/trundle  
options

When converted to 4/6 bed:  
58 3/8W 51 1/2H 79 5/8L  
(148 x 131 x 202 cm)

SEE PAGE 4



## BTG-2400 BUILT TO GROW SLEIGH CRIB

Mattress platform has two height adjustments  
Ends have openings for bumper ties

Overall: 38W 47 1/2H 55 1/2L  
(97 x 121 x 141 cm)

### BTK-3230 Toddler Bed Kit

Purchase converts crib to toddler bed/daybed  
Includes toddler bed rail and frame

### BTF-3235 Built to Grow Conversion Kit

Purchase converts crib to 4/6 double bed  
Consists of RLS-0050 3/3-4/6 Pair of Hook  
on Wood Rails

SLR-0468 4/6 Slat Roll

4/6 bed will accommodate PSR-3267  
Safety Wood Rails

Can be used as headboard only with metal  
bed frame

When converted to 4/6 bed:  
55 7/8W 48 3/4H 87 7/8L  
(142 x 124 x 223 cm)

SEE PAGES 6, 7



## BED-5183 TWIN PANEL BED

### HBD-5183 Headboard 3/3

bored for metal frame  
42 7/8W 50 3/4H (109 x 129 cm)

### FTB-5183 Footboard 3/3

42 7/8W 27 1/8H (109 x 69 cm)

### RLS-0050 Pair Wood Rails

3/3-4/6 (Hook)  
5 1/4H 76L (13 x 193 cm)

### SLR-0368 Slat Roll 3/3

bottom of side rail to floor: low lock  
7 1/2H (19 cm)  
bottom of side rail to floor: high lock  
13 1/2H (34 cm)

Overall: 42 7/8W 50 3/4H 81 3/4L  
(109 x 129 x 208 cm)

SEE PAGES 12, 13, 14, 15



## BED-5184 DOUBLE PANEL BED

### HBD-5184 Headboard 4/6

bored for metal frame  
57 7/8W 50 3/4H (147 x 129 cm)

### FTB-5184 Footboard 4/6

57 7/8W 27 1/8H (147 x 69 cm)

### RLS-0050 Pair Wood Rails

3/3-4/6 (Hook)  
5 1/4H 76L (13 x 193 cm)

### SLR-0468 Slat Roll 4/6

bottom of side rail to floor: low lock  
7 1/2H (19 cm)  
bottom of side rail to floor: high lock  
13 1/2H (34 cm)

Overall: 57 7/8W 50 3/4H 81 3/4L  
(147 x 129 x 208 cm)



## SSC-1000 STATIONARY CRIB

Mattress platform has two height adjustments  
Ends have openings for bumper ties

### STK-3435 Stationary Toddler Kit

Purchase converts crib to toddler bed/daybed  
includes toddler bed rail and frame

Overall: 30W 43 13/16H 61 3/8L  
(76 x 111 x 156 cm)

SEE PAGES 8, 9



## SSC-1400 STATIONARY CRIB

Mattress platform has two height adjustments  
Ends have openings for bumper ties

### STK-3435 Stationary Toddler Kit

Purchase converts crib to toddler bed/daybed  
includes toddler bed rail and frame

Overall: 32 3/8W 43 7/8H 57L  
(82 x 111 x 145 cm)

SEE PAGES 10, 11



**BED-5983 TWIN BOOKCASE BED**

**HBD-5983 Headboard 3/3**

Two cord holes, three adjustable shelves, bored for metal frame  
48 1/2W 10D 51H (123 x 25 x 130 cm)

**FTB-5983 Footboard, Spacers and Slat System 3/3**

44 7/8W 14 1/2H (114 x 37 cm)

**LRB-0379 Left and Right Drawer Bases**

WILL NOT ACCOMMODATE SAFETY RAILS OR UNDERBED STORAGE ITEMS

bottom of side rail to floor: 4 5/16H (11 cm)

Overall: 48 1/2W 51H 88 1/16L (123 x 130 x 224 cm)

SEE PAGES 16, 22



**BED-5984 DOUBLE BOOKCASE BED**

**HBD-5984 Headboard 4/6**

Two cord holes, three adjustable shelves, bored for metal frame  
63 1/2W 10D 51H (161 x 25 x 130 cm)

**FTB-5984 Footboard, Spacers and Slat System 4/6**

59 7/8W 14 1/2H (152 x 37 cm)

**LRB-0379 Left and Right Drawer Bases**

WILL NOT ACCOMMODATE SAFETY RAILS OR UNDERBED STORAGE UNITS

bottom of side rail to floor: 4 5/16H (11 cm)

Overall: 63 1/2W 51H 88 1/16L (161 x 130 x 224 cm)

SEE PAGE 17



**HBK-7370 TWIN HALF BUNK BED**

**TBE-7320 One Set of Bunk Ends 3/3**

**RLS-0052 Pair Wood Rails 3/3-4/6 (Bolt)**

5 1/4H 76L (13 x 193 cm)

**SLR-O368 Slat Roll 3/3**

headboard: 42 15/16W 43 3/16H (109 x 110cm)

footboard: 42 15/16W 35 3/4H (109 x 91cm)

bottom of side rail to floor: low lock 7H (18 cm)

bottom of side rail to floor: high lock 13 1/2H (34 cm)

Overall: 42 15/16W 43 1/16H 81 7/16L (109 x 109 x 207 cm)

SEE PAGES INSIDE FRONT COVER, 24, 25

To Convert to Twin Bunk Bed:

**HBC-7320 Half Bunk Conversion to Twin Bunk Bed**

**TBE-7320 One Set of Bunk Ends 3/3**

RLS-0052 Pair Wood Rails 3/3-4/6 (Bolt)

5 1/4H 76L (13 x 193 cm)

**SLR-O368 Slat Roll 3/3**

**LAD-O769 Ladder**

**GRL-O800 One Set of Bunk Guard Rails**



**HBK-7470 DOUBLE HALF BUNK BED**

**DBE-7420 One Set Bunk of Ends 4/6**

**RLS-0052 Pair Wood Rails 3/3-4/6 (Bolt)**

5 1/4H 76L (13 x 193 cm)

**SLR-O468 Slat Roll 4/6**

headboard: 57 15/16W 43 11/16H (147 x 111cm)

footboard: 57 15/16W 34 1/8H (147 x 87cm)

Overall: 57 15/16W 43 11/16H 81 1/2L (147 x 111 x 207 cm)

To convert to a Double over Double Bunk Bed:

**HBC-7420 Half Bunk Conversion to Double Bunk Bed**

**DBE-7420 One Set Bunk of Ends 4/6**

RLS-0052 Pair Wood Rails

3/3-4/6 (Bolt)

5 1/4H 76L (13 x 193 cm)

**SLR-O468 Slat Roll 4/6**

**LAD-O769 Ladder**

**GRL-O800 One Set of Bunk Guard Rails**



**BNK-7320 TWIN BUNK BED**

**\*\* (2) TBE-7320 One Set Bunk Ends 3/3**

**RLS-O773 Two Pair Wood Rails**

(Bolt), one pair guard rails, two slat rolls 3/3

**LAD-O769 Bunk Ladder**

headboard: 42 15/16W 43 3/16H (109 x 110 cm)

footboard: 42 15/16W 35 3/4H (109 x 91 cm)

bottom of side rail to floor: low lock 7H (18 cm)

bottom of side rail to floor: high lock 13 1/2H (34 cm)

Overall: 42 15/16W 75 3/4H 81 1/2L (109 x 192 x 207 cm)

SEE PAGES 18, 19



**BNK-7420 DOUBLE OVER DOUBLE BUNK BED**

**\*\* (2) DBE-7420 One Set Bunk Ends 4/6**

**RLS-O778 Two Pair Wood Rails**

(Bolt), one pair guard rails, two slat rolls 4/6

**LAD-O769 Bunk Ladder**

headboard: 57 15/16W 43 11/16H (147 x 111 cm)

footboard: 57 15/16W 34 1/8H (147 x 87 cm)

bottom of side rail to floor: low lock 7H (18 cm)

bottom of side rail to floor: high lock 13 1/2H (34 cm)

Overall: 57 15/16W 77 1/4H 81 1/2L (147 x 196 x 207 cm)



**TOF-8320 TWIN OVER DOUBLE BUNK BED**

**\*\* (2) TBE-7320 One Set Bunk Ends**

**RLS-O773 Two Pair Wood Rails**

(Bolt), one pair guard rails, two slat rolls 3/3

**SLR-O468 Slat Roll 4/6**

**TFK-O570 Extension Kit and Bunk Ladder**



\*\* Must order two sets of ends to make a complete bunk bed

## Bed Accessories

The following items are for use only with select beds from the Hampton Pointe collection.



**LPF-3285 LOW PROFILE FOOTBOARD 3/3**  
43W 20 1/4H (109 x 51 cm)



**LPF-3290 LOW PROFILE FOOTBOARD 4/6**  
58W 20 1/4H (147 x 51 cm)



**717-O279 CAPTAIN'S STORAGE DRAWERS**  
Four drawers, open area with one adjustable shelf. Will not accommodate safety rails.  
Drawer: 5 3/8D (14 cm)  
Overall: 76W 19 7/8D 19 1/2H (193 x 50 x 50 cm)



**TSU-0069 UNDERBED TRUNDLE UNIT**  
Can also be used with 4/6 double bed.  
Finished inside and out on all four sides; casters.  
75W 40D 12 3/4H (191 x 102 x 32 cm)

**TFK-0570 EXTENSION KIT AND BUNK LADDER**

Use with most 3/3 bunk (except BNK-7300 and 650 myHaven) to create twin over full bunk; a SLR-0468 slat roll 4/6 is required



**BTK-3230 TODDLER BED KIT**  
For use with Built to Grow Cribs.  
Includes toddler bed rail and frame.



**STK-3435 STATIONARY TODDLER KIT**  
For use with Stationary Side Cribs.  
Includes toddler bed rail and frame.  
37 7/8W 15 1/8H (96 x 38 cm)



**PSR-3267 PAIR SAFETY RAILS**  
Will not fit on Captain's Storage Drawers  
47W 16 1/2H (119 x 42 cm)



**USS-0097-00 UNDERBED SPACE SAVER**  
upper position: 72W 38D 15 1/2H (183 x 97 x 39 cm)  
lower position: 72W 38D 5H (183 x 97 x 13 cm)

**BTF-3235 BTG 4/6 DOUBLE BED CONVERSION KIT**

RLS-0050 Pair Wood Rails 3/3-4/6 (Hook)  
5 1/4H 76L (13 x 193 cm)  
SLR-0468 Slat Roll 4/6

**RLS-0050 PAIR WOOD RAILS**

5 1/4H 76L (13 x 193 cm)

**SLR-0368 SLAT ROLL 3/3**

**SLR-0468 SLAT ROLL 4/6**

## Bed Requirements

**Crib Standard**

Standard crib size mattress, 51 5/8 L 27 1/4 W (131 x 69 cm), with a thickness not exceeding 6" (15 cm)

**Twin Bed**

Standard twin size (3/3) mattress and box spring or twin size mattress with twin size slat roll

**Double Bed**

Standard double size (4/6) mattress and box spring or double size mattress with double size slat roll

**Headboard Only**

Use a mattress and box spring which correspond in size to size of headboard and a metal bed frame which attaches to the headboard.

**Bunk Bed**

Two standard twin size (3/3) mattresses (no bunkie board necessary with use of slat roll). The 3/3 Twin Bunk Beds include two 0368 3/3 Slat Rolls. (9" maximum thickness for mattress)

**Double Over Double Bunk Bed**

Two double size (4/6) mattresses (no bunkie board necessary with use of slat roll). The 4/6 Double Bunk Beds include two 0468 4/6 Slat Rolls. (9" maximum thickness for mattress)

**Underbed Trundle Unit**

Standard twin size (3/3) mattress (no bunkie board needed; 8 1/2" maximum thickness for mattress)

**Underbed Space Saver**

Standard twin size (3/3) mattress

# DRESSERS/CHESTS/NIGHT STANDS/MIRRORS



## 717-0001 SINGLE DRESSER

Four drawers, accommodates CHS 3300 changing station

46 1/2W 19D 33 15/16H (118 x 48 x 86 cm)

SEE PAGES 8, 9, 22



## 717-0012 DRAWER CHEST

Six drawers

38W 18D 51 1/2H (97 x 46 x 131 cm)

SEE PAGES 14, 15



## 717-0032 SQUARE MIRROR

Plate: 33 1/4W 33 1/4H (84 x 84 cm)

Overall: 38W 38H (97 x 97 cm)

SEE PAGES 6, 16, 17



## 717-0002 DOUBLE DRESSER

Seven drawers, accommodates CHS 3300 changing station

56W 19D 33 15/16H (142 x 48 x 86 cm)

SEE PAGES 6, 7, 16, 17



## 717-0014 DOOR/MEDIA CHEST

Two doors, one utility drawer, one drop front drawer, cord management opening, behind doors: one removable clothing rod, two adjustable shelves, two cord holes

TV area: 40 3/8W 16 3/8D 33 1/4H (103 x 42 x 84 cm)

Overall: 44 3/8W 20 1/2D 65 1/6H (113 x 52 x 165 cm)

SEE PAGES 12, 13



## 717-0081 NIGHT STAND

One drawer

21W 16D 25H (53 x 41 x 64 cm)

SEE PAGES 14, 15



## CHS-3300 CHANGING STATION

Use with most Young America dressers. Includes pad and safety strap.

43 1/4W 18 3/4D 9 1/2H (110 x 48 x 24 cm)

SEE PAGES 8, 9, 22, 23



## 717-0011 NOOK AND CRANNY CHEST

Six drawers

25W 18D 55 15/16H (64 x 46 x 142 cm)

SEE PAGES 6, 7



## 717-0082 NIGHT STAND

Three drawers

26W 17D 25 15/16H (66 x 43 x 66 cm)

SEE PAGES INSIDE FRONT COVER, 12, 13, 24, 25





**717-O224 LARGE HUTCH**

Three adjustable shelves, three removable vertical partitions, two cord holes, one stationary shelf with DVD/CD storage, cork back panel, cord management opening, mending plate kit

51 7/8W 16D 48H (132 x 41 x 122 cm)

SEE PAGES 3, 18



**WAL-8220 WRITING DESK**

Two drawers, one drop front, one stationary shelf

48 5/8W 22 1/2D 30H (124 x 57 x 76 cm)

SEE PAGES 20, 21, 23



**717-O226 COMPUTER DESK**

One drop-front keyboard drawer, three drawers, accommodates 717-O224 Large Hutch

52W 24D 30H (132 x 61 x 76 cm)

SEE PAGES 3, 18



**CHR-0070 STUDENT CHAIR**

vinyl #117 Oyster

Seat: 18 7/8W 14 5/8D 17H (48 x 37 x 43 cm)

Overall: 18 7/8W 18 5/8D 34 5/16H (48 x 47 x 87 cm)

SEE PAGES 3, 18, 20, 21, 23



(BASKETS SOLD SEPARATELY)

**WAL-8190 LARGE CONSOLE**

Four adjustable shelves, four cord holes, two storage drawers, optional storage basket available  
(SEE ITEM BSK-0434)

48 3/8W 19 1/4D 34H (123 x 49 x 86 cm)

SEE PAGE 23



**BSK-0434 MARIMBA ABACA BASKET WITH LINER**

Available in Marimba Brown ONLY. For use with WAL items 8190, 8260, 8270, 8280, 8290

12 3/4W 12 3/4D 9 5/8H (32 x 32 x 24 cm)

SEE PAGES 20, 22, 23



**WAL-8120 STORAGE HUTCH**

Two vertical partitions, two cord holes, attachment brackets, fits 3/3 bed in wall system

48 3/4W 15 7/16D 15 3/8H (124 x 39 x 39 cm)

SEE PAGES 20, 21, 22, 23



**WAL-8260 NARROW BOOKCASE**

Two adjustable shelves, two stationary shelves, two cord holes, cord management opening, two drawers, mending plate kit, optional storage basket available  
(SEE ITEM BSK-0434)

16 1/16W 15 7/16D 78 1/4H (41 x 39 x 199 cm)

SEE PAGES 20, 21



(BASKETS SOLD SEPARATELY)



**WAL-8280 DRAWER BOOKCASE**

Two adjustable shelves, two stationary shelves, two cord holes, cord management openings, two drawers, mending plate kit, optional storage basket available  
(SEE ITEM BSK-0434)

30W 15 7/16D 78 1/4H (76 x 39 x 199 cm)

SEE PAGES 22, 23



(BASKETS SOLD SEPARATELY)



**WAL-8230 LARGE STORAGE HUTCH**

Two stationary vertical partitions, two cord holes, attachment brackets, accommodates 4/6 bed in wall system

63 3/4W 15 7/16D 15 3/8H (162 x 39 x 39 cm)



**WAL-8270 OPEN BOOKCASE**

Two stationary shelves, three adjustable shelves, two cord holes, cord management opening, mending plate kit, optional storage basket available  
(SEE ITEM BSK-0434)

30W 15 7/16D 78 1/4H (76 x 39 x 199 cm)

SEE PAGES 22, 23



(BASKETS SOLD SEPARATELY)



**WAL-8290 DOOR BOOKCASE**

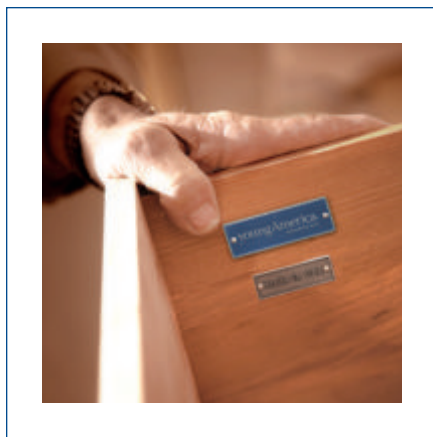
One stationary shelf, two adjustable shelves, two cord holes, cord management opening, two doors, one adjustable shelf behind doors, mending plate kit, optional storage basket available  
(SEE ITEM BSK-0434)

30W 15 7/16D 78 1/4H (76 x 39 x 199 cm)

SEE PAGES 20, 21, 22, 23



(BASKETS SOLD SEPARATELY)



AN AMERICAN FURNITURE MANUFACTURER  
SINCE 1924

youngAmerica®  
MADE IN THE USA 

YOUNG AMERICA IS A REGISTERED TRADEMARK OF STANLEY FURNITURE COMPANY, INC.  
P.O. BOX 30 • 1641 FAIRSTONE PARK HWY • STANLEYTOWN, VA 24168  
[youngAmerica.com](http://youngAmerica.com)