

CITY  CLUB



Stanley  
FURNITURE

# C I T Y C L U B

## PEMBERLY MEETS PARK AVENUE

Imagine romping around the English manors of Jane Austen, or gliding through the private clubs of New York’s Morgans, Vanderbilts and Whitneys. Now imagine doing it in your favorite pair of jeans and t-shirt. That’s the spirit of City Club.

Antique-inspired without even a whiff of stuffiness, City Club is for those who appreciate timeless, traditional style, but on a liveable scale. The collection takes its design cues from 18th Century Federal, Sheraton and Chippendale designs, with a warm finish that hints of centuries-old hand craftsmanship.

Make no mistake, City Club—for all its noble heritage—is as at home in today’s interiors as it would have been in days gone by, thanks to its medium-scaled pattern, gentle distressing and slightly more eclectic pastiche.

Collected in a range of complementary but not “matchy-matched” pieces, City Club features detailed cherry and mahogany veneers and rustic maple solids, rich fabric, nailhead trim, tufted leather, antiqued brass knob pulls and even faux alligator to help you create your own interpretation of vintage elegance.

Much of the collection’s aristocratic esthetic is in the finish. Not too red, not too brown, it exudes just the right amount of warmth. Water spotting, fly specking, cow tailing and rock and rasp distressing add a softness that suggests generations of use.

Whether you live in Notting Hill, Beacon Hill or Cherry Hill, City Club offers a full range of furniture and accent pieces for your bedroom, living room, dining room and home office. Welcome the refined elegance of a bygone era into your home with City Club.

## TABLE OF CONTENTS

2	Elements of Style
4	Dining
16	Bedroom
24	Living - accents home entertainment home office
36	Details and Descriptions

**Stanley**  
FURNITURE

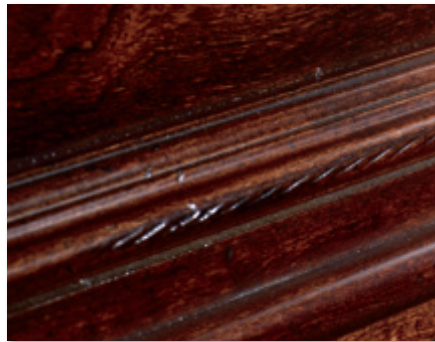


## finish / wood characteristics

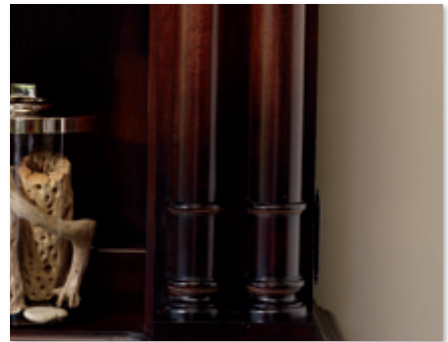
Rustic maple solids combined with cherry and mahogany veneers set the canvas for a rich warm brown finish. A variety of gentle distressing techniques create the appearance of vintage classics while hand waxing adds a “grab” to the touch.



BLAIR



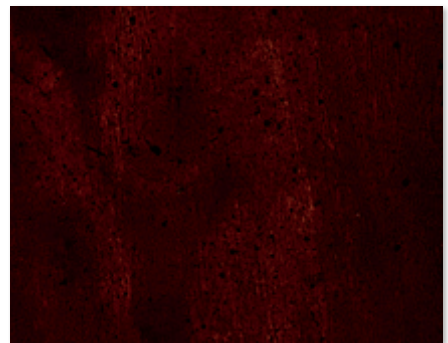
RASPING



BURNISHING



ROCK



SPATTER



COWTAILING

## hardware

Knob pulls are die cast in zinc with a mottled, antiqued brass finish and come in two sizes featuring concentric rings, profile steps and fine bead detailing. Coordinating back plates include concentric rings and profile steps.



FLAMED ANTIQUED BRASS

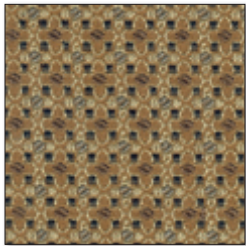
## nail head trim

Each nail in our antiqued brass nail head trim detail is placed by hand to ensure a beautifully finished piece.



## fabric

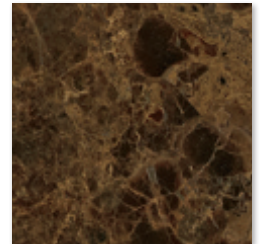
Luxurious fabric coordinates to create an atmosphere of timeless, understated elegance. Alfredo Branch resembles a foulard—a soft silk that’s usually printed and often used for men’s neckties.



ALFREDO BRANCH

## marble

Each piece of natural marble used in City Club is completely unique. The characteristic swirls, vein lines and pattern variations are due to mineral impurities originally present in the limestone and also give marble its color. Consequently your marble will not be identical in color to the piece shown here. In addition, structural variations of the stone’s crystallization cause what appear to be hairline cracks. Like the color variations, the structural variations are not a defect but an important part of any marble’s unique character.



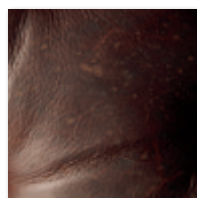
## leather and its characteristics

City Club features only the finest top-grain leather that’s been aniline-dyed to give it a more supple texture, greater depth, and a rich patina that only gets better with time. Gentle distressing adds to its vintage look. Because leather is a natural product, both texture and color will vary slightly from hide to

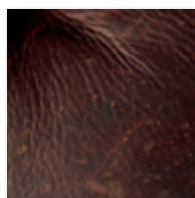
hide and even within the same hide. These natural markings and color variations enhance leather’s individual character and bring out the rich, unique qualities that are so highly prized.



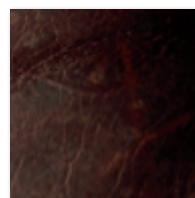
CHOCOLATE LEATHER



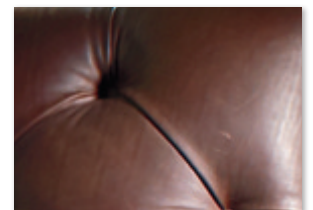
BUG BITE IN LEATHER



FAT ROLL IN LEATHER



HEALED SCAR IN LEATHER



SUBTLE VARIATIONS IN COLOR



DINING



933-11-06

**Pheasant Run Sideboard**

Blair finish  
(details p. 37)





Day's Feast Oval Leg Table, top view



933-11-32  
Day's Feast Oval Leg Table  
Blair finish  
(details p. 36)



Day's Feast Oval Leg Table, top view with two leaves



933-11-75  
Saville Arm Chair  
Blair finish  
Tufted Harness Chocolate leather  
(details p. 37)



933-11-60  
Racket Club Scroll Side Chair  
Blair finish  
alfredo branch fabric  
(details p. 37)



933-11-11  
Trophy Case  
Blair finish  
(details p. 37)



Discreet touch switch makes it easy to illuminate your treasures.

Tiny air bubbles and soft waves replicate the look of antique glass.



Intricate carvings on chair and table legs speak of expert hand craftsmanship.





933-11-30  
**Private Room Pedestal Table**  
 Blair finish  
 (details p. 36)



Private Room Pedestal Table, top view



Private Room Pedestal Table, top view with leaf



933-11-69  
**Country Club Chair**  
 Blair finish  
 Harness Chocolate leather  
 (details p. 37)



933-11-06  
**Pheasant Run Sideboard**  
 Blair finish  
 (details p. 37)



Graceful curves, nail head trim and rich chocolate leather lend an aristocratic feel to club chairs.



The Pheasant Run Sideboard has an adjustable shelf behind each door that provides storage flexibility.



Day's Feast Oval Leg Table, top view



933-11-32  
Day's Feast Oval Leg Table

Blair finish  
(details p. 36)



Day's Feast Oval Leg Table, top view with two leaves



933-11-05  
Countryside Buffet

Blair finish  
(details p. 37)



933-11-75  
Saville Arm Chair

Blair finish  
Tufted Harness Chocolate leather  
(details p. 37)



933-11-65  
Saville Side Chair

Blair finish  
Tufted Harness Chocolate leather  
(details p. 37)



The Countryside Buffet has a lined silver drawer which organizes and protects your pieces.



Storage flexibility is an added benefit of the Countryside Buffet's adjustable shelf behind each door.







Private Room Pedestal Table, top view



Private Room Pedestal Table, top view with leaf



933-11-30  
Private Room Pedestal Table  
Blair finish  
(details p. 36)



933-11-60  
Racket Club Scroll Side Chair  
Blair finish  
Alfredo Branch fabric  
(details p. 37)



933-11-70  
Racket Club Scroll Arm Chair  
Blair finish  
Alfredo Branch fabric  
(details p. 37)



933-11-11  
Trophy Case  
Blair finish  
(details p. 37)



933-11-05  
**Countryside Buffet**  
Blair finish  
(details p. 37)



933-11-11  
**Trophy Case**  
Blair finish  
(details p. 37)





933-13-39

**Saville Leather Sleigh Bed**

Blair finish

Tufted Harness Chocolate leather  
(details p. 39)



BEDROOM





933-13-45  
**Barrister Bed**  
Blair finish  
(details p. 39)



933-13-116  
**Oxford Bachelor's Chest, Marble Top**  
Blair finish  
(details p. 38)



933-13-16  
**Oxford Bachelor's Chest**  
Blair finish  
(details p. 38)



933-13-80  
**Cottage Night Stand**  
Blair finish  
(details p. 38)



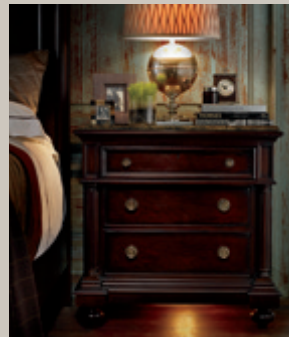
933-13-31  
**Barrister Landscape Mirror**  
Blair finish  
(details p. 38)



933-13-05  
**Dresser**  
Blair finish  
(details p. 38)



Rich, arching cathedral grain is evident in the Barrister Bed's mahogany panels.



A concealed dimmer switch activates a light beneath the Oxford Bachelor's Chest.



933-13-10 Cottage Drawer Chest  
Blair finish (details p. 38)



933-13-13 Oxford Drawer Chest  
Blair finish (details p. 38)



933-13-30 Exotic Decorative Mirror  
Faux Alligator Hide (details p. 38)

933-13-06 oxford dressing chest  
Blair finish (details p. 38)



933-13-31 Barrister Landscape Mirror  
Blair finish (details p. 38)

933-13-05 Dresser  
Blair finish (details p. 38)



933-13-10  
**Cottage Drawer Chest**  
 Blair finish  
 (details p. 38)



933-13-13  
**Oxford Drawer Chest**  
 Blair finish  
 (details p. 38)



933-13-81  
**Bleeker Street Telephone Table**  
 Blair finish  
 (details p. 38)



933-13-30  
**Exotic Decorative Mirror**  
 Faux Alligator Hide  
 (details p. 38)

933-13-06  
**Oxford Dressing Chest**  
 Blair finish  
 (details p. 38)



933-13-31  
**Barrister Landscape Mirror**  
 Blair finish  
 (details p. 38)

933-13-05  
**Dresser**  
 Blair finish  
 (details p. 38)



933-13-39  
**Saville Leather Sleigh Bed**  
Blair finish  
Tufted Harness Chocolate leather  
(details p. 39)



933-13-80  
**Cottage Night Stand**  
Blair finish  
(details p. 38)



933-13-10  
**Cottage Drawer Chest**  
Blair finish  
(details p. 38)



933-13-72  
**Day's End Leather Bed End Bench**  
Blair finish  
Tufted Harness Chocolate leather  
(details p. 38)



Deeply tufted leather invites relaxation while nail head trim adds just the right touch of antiqued refinement.



Antiqued brass hardware lends understated elegance.





LIVING



933-18-04  
**Savannah Kidney Desk**  
Blair finish  
(details p. 41)





933-15-16  
**Martini Table**  
Blair finish  
(details p. 40)



933-17-31  
**Country Estate Media Console**  
Blair finish  
(details pp. 40, 41)

933-17-51  
**Country Estate TV Bookcase**  
Blair finish  
(details p. 40)



Hidden pullout shelf lends a bit of extra table space when needed.



Choose glass or wood for the center doors in the media console.



933-18-18  
**Barrister Series  
Center Bookcase**

Blair finish  
(details p. 41)



933-15-03  
**Cambridge Storage Cocktail Table**

Blair finish  
(details p. 40)



933-15-14  
**Uptown Table**

Blair finish  
(details p. 40)

Canister lights on the bookcase add drama to any room.



A combination of mahogany hardwood and veneers creates a surface with richness and depth.





Barrister Series Left and Right Bookcases no longer available.





933-17-51  
**Country Estate TV Bookcase**  
Blair finish  
(details p. 40)



933-17-31  
**Country Estate Media Console**  
Blair finish  
(details pp. 40, 41)

933-17-31  
**Country Estate Media Console**  
Blair finish  
(details pp. 40, 41)



933-15-07  
**Saville Leather Cocktail Table**  
Blair finish  
Tufted Harness Chocolate leather  
(details p. 40)



Saville Leather Cocktail Table,  
top view



933-15-10  
**University Drawer End Table**  
Blair finish  
(details p. 40)



Outside door with speaker cloth panel keeps media components out of sight, but fully functional.



Concealed post shelves are just the right size for CDs and DVDs.





933-18-18  
**Barrister Series Center Bookcase**  
Blair finish  
(details p. 41)



933-15-05  
**Hunt Club Console Table**  
Blair finish  
(details p. 40)



933-15-13  
**Overland Drum Table**  
Blair finish  
(details p. 40)



Overland Drum Table, top view  
with brass inlay



Five O'Clock Oval Cocktail Table, top view



933-15-01  
**Five O'Clock Oval Cocktail Table**  
Blair finish  
(details p. 40)





933-18-18  
**Barrister Series  
Center Bookcase**  
Blair finish  
(details p. 41)



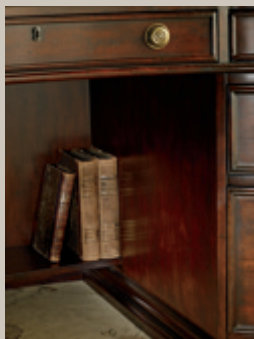
933-18-04  
**Savannah Kidney Desk**  
Blair finish  
(details p. 41)



933-18-33  
**Barrister Series Lateral File**  
Blair finish  
(details p. 41)



933-11-75  
**Saville Arm Chair**  
Blair finish  
Tufted Harness Chocolate leather  
(details p. 37)



Keep your favorite references handy and hidden with this concealed stationary shelf.



Two locking file drawers keep confidential papers safe and secure.



Smooth, bonded black leather desktop makes bill paying a work of art.

933-11 Blair Maple and select hardwood solids; cherry and mahogany veneers

56 Diameter



- 30 PRIVATE ROOM  
PEDESTAL TABLE

80 W



- 30 PRIVATE ROOM  
PEDESTAL TABLE  
with one 24" leaf



- 30 PRIVATE ROOM PEDESTAL TABLE

Consists of:

- 130 ROUND TABLE TOP

- 230 PEDESTAL TABLE BASE

Bottom of apron to floor: 25 3/4H (65 cm)  
One 24" leaf included; no additional leaves available

Overall: 56 Diameter 30H (142 x 76 cm)

Overall dimensions with leaf:

80 W 30H (203 x 76 cm)

SEE PAGES 1, 8, 9, 12, 13

- 32 DAY'S FEAST  
OVAL LEG TABLE

Bottom of apron to floor:  
25 7/8H (66 cm)

Two 22" (56 cm) leaves  
included; no additional  
leaves available

Overall:

76 1/4W 48 1/4D 30 1/8H  
(194 x 123 x 77 cm)

Overall dimensions with leaves:

120 1/4W 48 1/4D 30 1/8H  
(305 x 123 x 77 cm)

SEE PAGES 6, 7, 10, 11

76 1/4 W



- 32 DAY'S FEAST OVAL LEG TABLE

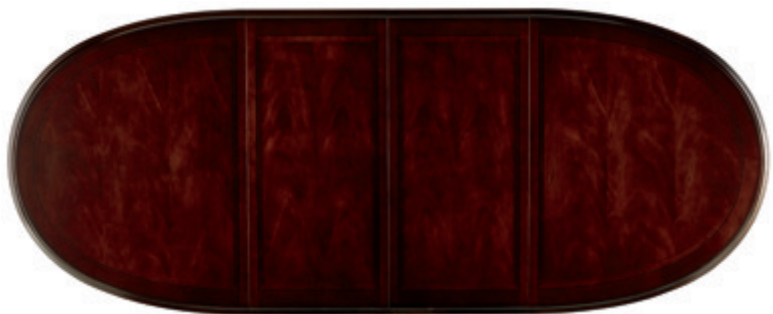


98 1/4 W



- 32 DAY'S FEAST OVAL LEG TABLE  
with one 22" leaf

120 1/4 W



- 32 DAY'S FEAST OVAL LEG TABLE  
with two 22" leaves



**- 60 RACKET CLUB SCROLL SIDE CHAIR**

Super Comfort™ seat  
 Alfredo Branch fabric  
 Seat: 20 1/4W 19 5/8D 19 1/2H  
 (51 x 50 x 50 cm)  
 Overall: 21W 25 3/8D 42 5/8H  
 (53 x 64 x 108 cm)

SEE PAGES 6, 7, 12, 13



**- 70 RACKET CLUB SCROLL ARM CHAIR**

Super Comfort™ seat  
 Alfredo Branch fabric  
 Seat: 20 1/4W 19 5/8D 19 1/2H  
 (51 x 50 x 50 cm)  
 Arm: 25H (64 cm)  
 Overall: 24 3/4W 25 5/16D 42 5/8H  
 (63 x 64 x 108 cm)

SEE PAGES 12, 13



**- 06 PHEASANT RUN SIDEBOARD**

Three drawers; one silver liner; two doors;  
 one adjustable shelf behind each door  
 68 5/16W 20 1/4D 43 9/16H  
 (174 x 51 x 111 cm)

SEE PAGES 4, 5, 8, 9



**- 65 SAVILLE SIDE CHAIR**

Super Comfort™ seat  
 Tufted Harness Chocolate leather;  
 nail head trim  
 Seat: 21 1/2W 20D 19 1/4H  
 (55 x 51 x 49 cm)  
 Overall: 21 7/8W 28 1/8D 44 5/8H  
 (56 x 71 x 113 cm)

SEE PAGES 10, 11



**- 69 COUNTRY CLUB CHAIR**

Super Comfort™ seat  
 Harness Chocolate leather;  
 nail head trim; casters  
 Seat: 22W 19 1/2D 19 1/2H  
 (56 x 50 x 50 cm)  
 Arm: 25H (64 cm)  
 Overall: 25 7/16W 25 5/16D 40H  
 (65 x 64 x 102 cm)

SEE PAGES 8, 9



**- 11 TROPHY CASE**

Consists of:

**- 111 CHINA DECK**

84 1/4W 19 1/2D 64 3/8H  
 (214 x 50 x 164 cm)

Three seeded glass doors; three canister  
 lights with touch switch; curio ends; six  
 adjustable, wood-framed glass shelves with  
 plate grooves; mirrored back; plate groove  
 in bottom panel

**- 211 CHINA BASE**

80 15/16W 20 5/16D 28 7/8H  
 (206 x 52 x 73 cm)

Six drawers; one silver liner  
 Overall: 84 1/4W 20 5/16D 93 1/4H  
 (214 x 52 x 237 cm)

SEE PAGES 6, 7, 12, 13, 14, 15



**- 75 SAVILLE ARM CHAIR**

Super Comfort™ seat  
 Tufted Harness Chocolate leather;  
 nail head trim  
 Seat: 21 1/2W 20 1/4D 19 1/4H  
 (55 x 51 x 49 cm)  
 Arm: 25H (64 cm)  
 Overall: 24 13/16W 28 5/8D 44 5/8H  
 (63 x 73 x 113 cm)

SEE PAGES 6, 7, 10, 11, 34, 35



**- 05 COUNTRYSIDE BUFFET**

Five drawers; four doors; one adjustable  
 shelf behind doors; silver liner  
 80 1/4W 20 1/2D 44 1/2H  
 (204 x 52 x 113 cm)

SEE PAGES 10, 11, 14

933-13 Blair Maple and select hardwood solids; cherry and mahogany veneers



- 05 DRESSER  
Eight drawers  
68 11/16W 19 5/8D 41 13/16H  
(174 x 50 x 106 cm)  
SEE PAGES 18, 19, 20, 21



- 16 OXFORD BACHELOR'S CHEST  
Three drawers  
Floor light with touch dimmer switch  
35 13/16W 18 13/16D 34 1/16H  
(91 x 48 x 87 cm)  
SEE PAGES 18, 19



- 30 EXOTIC DECORATIVE MIRROR  
Faux alligator hide frame  
Beveled plate: 28 5/8W 33 5/8H  
(73 x 85 cm)  
Overall: 45W 40H (114 x 102 cm)  
SEE PAGES 20, 21



- 06 OXFORD DRESSING CHEST  
Nine drawers  
64 11/16W 20 5/16D 45 13/16H  
(164 x 52 x 116 cm)  
SEE PAGES 20, 21

- 116 MARBLE TOP  
FOR 16 BACHELOR'S CHEST  
34 3/16W 18D 3/4H (87 x 46 x 2 cm)  
SEE PAGE 18, 19



- 80 COTTAGE NIGHT STAND  
Three drawers  
31 13/16W 17 7/8D 32 1/8H  
(81 x 45 x 82 cm)  
SEE PAGES 19, 22, 23



- 31 BARRISTER LANDSCAPE MIRROR  
Beveled plate: 39 5/8W 29H (101 x 74 cm)  
Overall: 50 1/8W 41 3/8H (127 x 105 cm)  
SEE PAGES 18, 19, 20, 21



- 10 COTTAGE DRAWER CHEST  
Nine drawers  
45 7/16W 19 5/8D 61 11/16H  
(115 x 50 x 157 cm)  
SEE PAGES 20, 21, 22, 23



- 81 BLEEKER STREET TELEPHONE TABLE  
One drawer; one door; one adjustable shelf  
behind door  
21 13/16W 17 7/8D 33 13/16H  
(55 x 45 x 86 cm)  
SEE PAGE 21



- 72 DAY'S END LEATHER BED END BENCH  
Tufted Harness Chocolate leather; nail head trim;  
casters  
54 7/16W 18 3/4D 20H (138 x 48 x 51 cm)  
SEE PAGES 22, 23



- 13 OXFORD DRAWER CHEST  
Six drawers  
44 13/16W 20 5/16D 58 3/4H  
(114 x 52 x 149 cm)  
SEE PAGES 20, 21



- 82 UPTOWN NIGHT TABLE  
30 Diameter 28 11/16H  
(76 x 73 cm)  
SEE PAGES COVER, 28, 29



**- 40 BARRISTER BED 5/0 QUEEN**

Consists of:

- 140 PANEL HEADBOARD 5/0  
Bored for metal frame  
69 3/4W 68H (177 x 173 cm)
- 240 PANEL FOOTBOARD 5/0  
69 3/8W 32 1/4H (176 x 82 cm)
- 51 PAIR WOOD RAILS 5/0-6/6  
Three slats, three center feet  
7 7/8H 82L (20 x 208 cm)

Bottom of side rail to floor: 9H (23 cm)

Overall: 69 3/4W 68H 90 1/2L  
(177 x 173 x 230 cm)

**- 45 BARRISTER BED 6/6 KING**

Consists of:

- 145 PANEL HEADBOARD 6/0-6/6  
Bored for metal frame  
85 1/2W 68H (217 x 173 cm)
- 245 PANEL FOOTBOARD 6/6  
85 1/8W 32 1/16H (216 x 81 cm)
- 51 PAIR WOOD RAILS 5/0-6/6  
Three slats, three center feet  
7 7/8H 82L (20 x 208 cm)

Bottom of side rail to floor: 9H (23 cm)

Overall: 85 1/2W 68H 90 1/2L  
(217 x 173 x 230 cm)

**- 46 BARRISTER BED  
6/0 CALIFORNIA KING**

Consists of:

- 145 PANEL HEADBOARD 6/0-6/6  
Bored for metal frame  
85 1/2W 68H (217 x 173 cm)
- 246 PANEL FOOTBOARD 6/0  
81 1/2W 32 1/4H (207 x 82 cm)
- 58 PAIR WOOD RAILS 6/0  
Three slats, three center feet  
7 7/8H 86L (20 x 218 cm)

Bottom of side rail to floor: 9H (23 cm)

Overall: 85 1/2W 68H 94 1/2L  
(217 x 173 x 240 cm)

SEE PAGES COVER, 18, 19



**- 36 SAVILLE LEATHER SLEIGH BED  
5/0 QUEEN**

Consists of:

- 136 LEATHER SLEIGH HEADBOARD 5/0  
Tufted Harness Chocolate leather,  
nail head trim  
65 1/4W 56 1/2H (166 x 144 cm)
- 236 PANEL FOOTBOARD 5/0  
68 1/8W 29 1/2H (173 x 75 cm)
- 336 PAIR SLEIGH BED RAILS 5/0  
12 1/4H 77 1/2L (31 x 197 cm)

Bottom of side rail to floor: 4H (10 cm)

Overall: 68 1/8W 56 1/2H 97 1/16L  
(173 x 144 x 247 cm)

**- 39 SAVILLE LEATHER SLEIGH BED  
6/6 KING**

Consists of:

- 139 LEATHER SLEIGH HEADBOARD 6/6  
Tufted Harness Chocolate leather, nail  
head trim  
81W 56 1/2H (206 x 144 cm)
- 239 PANEL FOOTBOARD 6/6  
83 7/8W 29 1/2H (213 x 75 cm)
- 339 PAIR SLEIGH BED RAILS 6/6  
12 1/4H 77 1/2L (31 x 197 cm)

Bottom of side rail to floor: 4H (10 cm)

Overall: 83 7/8W 56 1/2H 97 1/16L  
(213 x 144 x 247 cm)

**- 38 SAVILLE LEATHER SLEIGH BED  
6/0 CALIFORNIA KING**

Consists of:

- 138 LEATHER SLEIGH HEADBOARD 6/0  
Tufted Chocolate Harness leather, nail  
head trim  
77W 56 1/2H (196 x 144 cm)
- 238 PANEL FOOTBOARD 6/0  
79 11/16W 29 1/2H (202 x 75 cm)
- 338 PAIR SLEIGH BED RAILS 6/0  
12 1/4H 81 1/2L (31 x 207 cm)

Bottom of side rail to floor: 4H (10 cm)

Overall: 79 11/16W 56 1/2H 101 1/16L  
(202 x 144 x 257 cm)

SEE PAGES 16, 17, 22, 23

933-15 Blair Maple and select hardwood solids; cherry and mahogany veneers



- 01 FIVE O'CLOCK OVAL COCKTAIL TABLE  
54W 31D 20H (137 x 79 x 51 cm)  
SEE PAGES 32, 33



- 03 CAMBRIDGE STORAGE COCKTAIL TABLE  
Three drawers; one stationary shelf  
52 13/16W 31D 20 3/4H (134 x 79 x 53 cm)  
SEE PAGES 28, 29



- 07 SAVILLE LEATHER COCKTAIL TABLE  
Tufted Harness Chocolate leather; nail head trim; casters  
44W 44D 20 1/2H (112 x 112 x 52 cm)  
SEE PAGES 30, 31



- 05 HUNT CLUB CONSOLE TABLE  
Two drawers; one stationary shelf  
69 1/2W 18 1/2D 35 1/8H  
(177 x 47 x 89 cm)  
SEE PAGE 33



- 10 UNIVERSITY DRAWER END TABLE  
One drawer  
24W 28D 26 7/8H  
(61 x 71 x 68 cm)  
SEE PAGES 30, 31



- 13 OVERLAND DRUM TABLE  
Brass inlay in top; one door; one adjustable shelf  
27 Diameter 28H (69 x 71 cm)  
SEE PAGES 32, 33



- 14 UPTOWN TABLE  
30 Diameter 28 11/16H (76 x 73 cm)  
SEE PAGES COVER, 28, 29



- 16 MARTINI TABLE  
One pullout, one stationary shelf; casters  
20 Diameter 30 1/8H  
(51 x 77 cm)  
SEE PAGES 26, 27

933-17 Blair Maple and select hardwood solids; cherry and mahogany veneers



- 51 COUNTRY ESTATE TV BOOKCASE  
- 31 COUNTRY ESTATE MEDIA CONSOLE

Additional configurations

- 51 COUNTRY ESTATE TV BOOKCASE  
Three stationary shelves and two stationary partitions in top section; six adjustable shelves; two removable partitions; cord management openings in center section  
Behind two outside doors: two adjustable shelves; one stationary shelf  
TV area: 60 7/8W 8 1/2D 40 5/16H (155 x 22 x 102 cm)  
Flat panel 42"-60" TVs can be mounted on back panel  
Overall: 80 1/8W 15 13/16D 58 3/8H (204 x 40 x 148 cm)

SEE PAGES 26, 27, 30, 31

**- 31 COUNTRY ESTATE MEDIA CONSOLE**

Two drawers with felt liners  
Six doors; center doors have antiqued glass panel option  
Behind center doors: two adjustable shelves; one electrical outlet; removable back panel with air vents and cord management openings  
Two doors left and right of center doors have speaker cloth option  
Behind doors: two adjustable shelves; cord management openings  
Behind two outside doors: two adjustable shelves  
Kneespace: 25 3/8W 23 7/8H (64 x 61 cm)  
Overall: 77W 22D 34 1/2H (196 x 56 x 88 cm)

SEE PAGES 26, 27, 30, 31



**-100 INFRARED REMOTE READER**

The infrared remote reader transfers your remote control signals to your audio/video components even if they are positioned behind wood panel doors, eliminating the need to insert glass panels. The infrared reader includes a receiver with mounting block, an infrared repeater control unit with power cord and three emitters. Each emitter, when properly positioned on the interior of the case, will transfer your remote control signal to the audio/video components positioned on one shelf. The system is easy to install and use. No programming is needed and the emitters may be repositioned as your audio/video components or configurations change.

**933-18 Blair**

*Maple and select hardwood solids; cherry and mahogany veneers*



**- 33 BARRISTER SERIES LATERAL FILE**

Two file drawers with locks, anti-tilt mechanism; adjustable levelers  
34 3/4W 24D 34 7/16H (88 x 61 x 87 cm)

SEE PAGES 34, 35



**- 04 SAVANNAH KIDNEY DESK**

Bonded leather top; cord management openings; seven drawers; stationary shelf in kneespace area  
64W 34D 30H (163 x 86 x 76 cm)

SEE PAGES 24, 25, 34, 35



**- 18 BARRISTER SERIES CENTER BOOKCASE**

Upper section: two canister lights with touch switch; one stationary wood-framed glass shelf; two adjustable shelves; one cord hole; one electrical outlet; cord management openings  
Lower section: two drawers; one cord hole; one file drawer with lock; adjustable levelers  
Accommodates up to a 42" flat panel TV  
54 5/8W 19 3/4D 86 1/2H (139 x 50 x 220 cm)

SEE PAGES 28, 29, 32, 33, 34, 35

NOTE: Stanley Furniture may find it necessary to make changes to prices, colors, materials, equipment and specifications at any time or even discontinue certain items. We'll try not to, but our lawyers say we have to let you know that it could happen.

# Stanley

FURNITURE

P.O. BOX 30 • 1641 FAIRYSTONE PARK HWY • STANLEYTOWN, VA 24168  
[stanleyfurniture.com](http://stanleyfurniture.com)