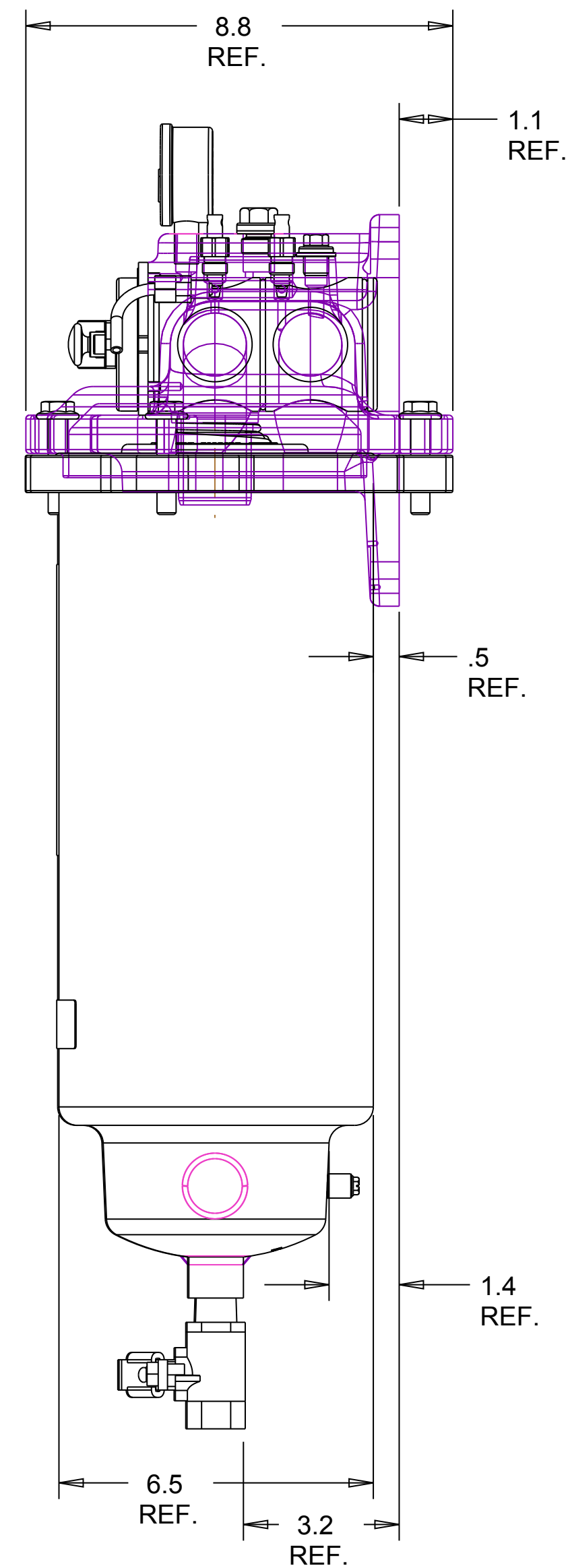
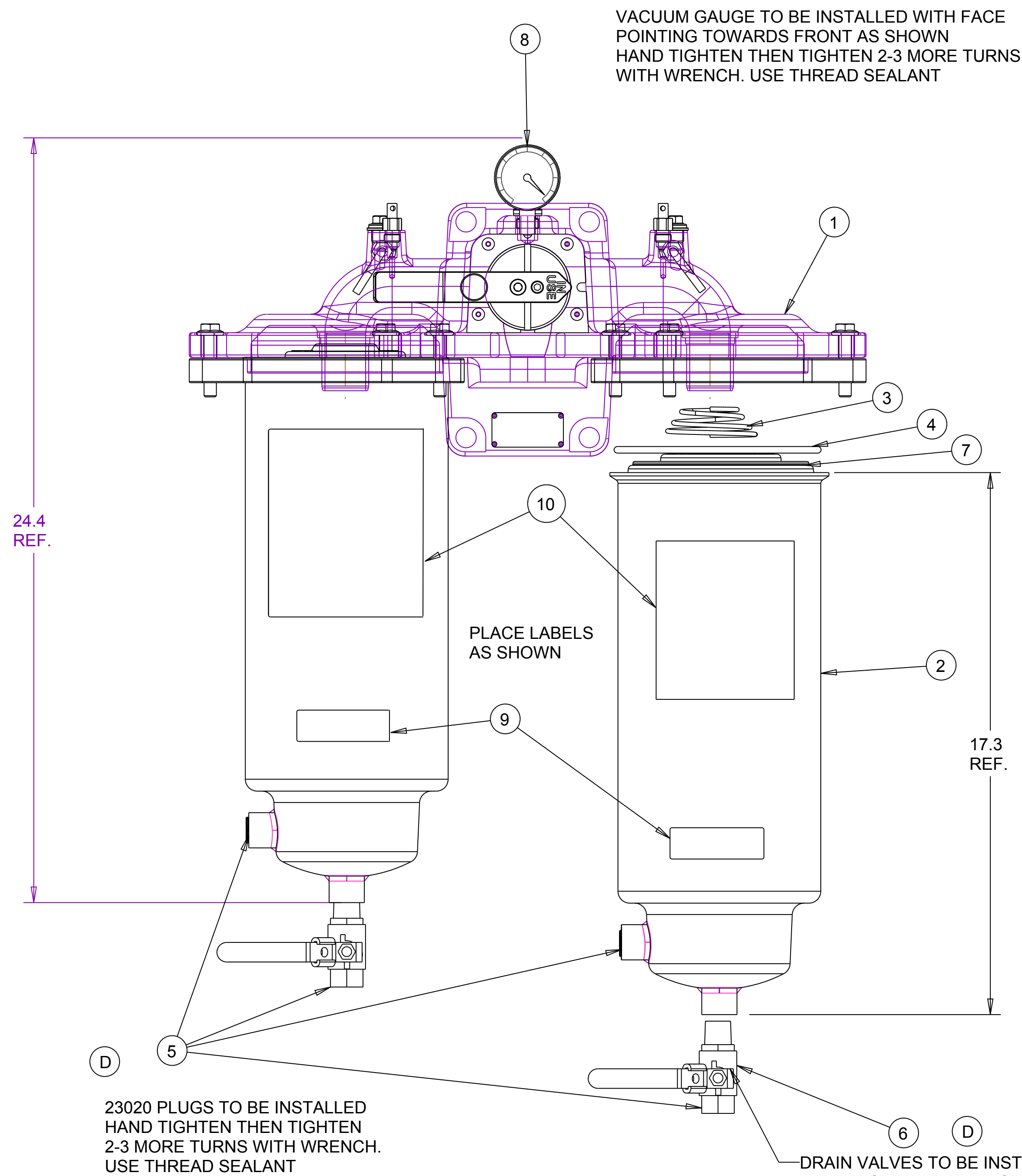
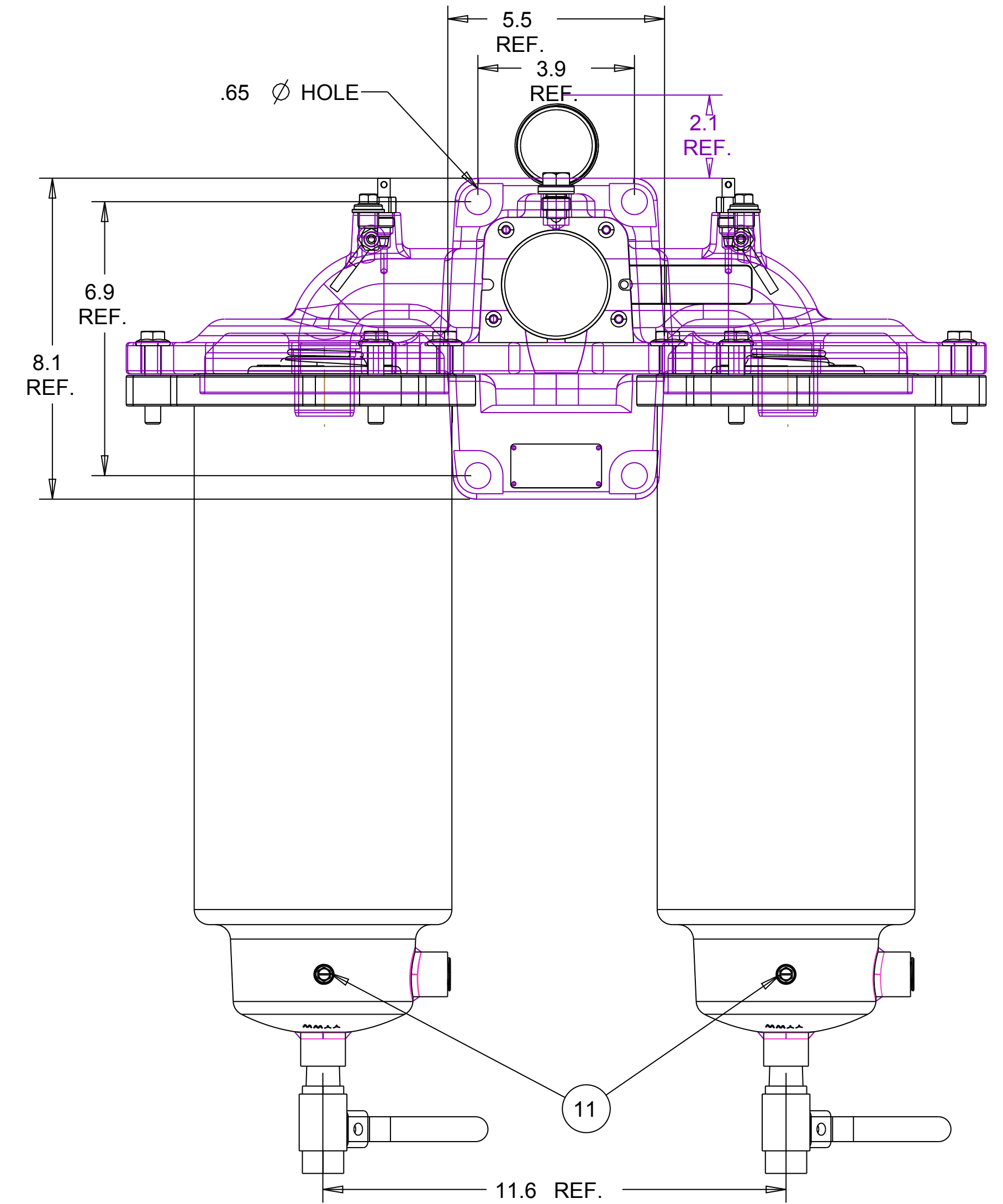


- NOTES:
1. LUBE O-RING BEFORE ASSEMBLY W/PETROLEUM JELLY OR VASELINE
 2. ALL METAL FITTINGS SHOULD BE ASSEMBLED USING THREAD SEALANT LOCTITE 567 OR EQUIVALENT.
 3. LEAK TEST WITH AIR TO 80 PSIG +/-2
 4. PLACE BROCHURE #73309 IN PLASTIC BAG WITH DRAIN VALVE AND THEN PLACE INTO SHIPPING CARTON
 5. TORQUE SCREWS AT 20 IN-LB (ITEM 8).
 6. COMPLETE UNIT WEIGHS APPROX. 85#
 7. CASTING HEAD & FLANGE POWDER COAT MARINE WHITE
 8. BOWLS POWDER COAT MARINE WHITE
 9. PART #73301000 INCLUDES CASTING HEAD, 2 FLANGES #73301001 AND (6) BOLTS #73308.

REVISIONS					
LTR	DESCRIPTION	E. N.	DATE	DRN	CHK
E	REMOVED 73308 & 73301001	00305	051812	JKN	JKN



QTY	PART NUMBER	DESCRIPTION	ITEM NO.
1	73309	OPERATION MANUAL (PUT IN CRATE)	13
1	73310	PACKAGING CRATE ASM	12
2	73307	10-32 X 3/8 SLOTTED HEX HEAD MACHINE SCREW	11
2	72731	UNIT LABEL	10
2	73240	WARNING LABEL	9
1	73314	VACUUM GAUGE	8
2	FBO 60338P	FBO-14 COAL/SEP KIT	7
2	73350-.5	VALVE BALL .50 STAINLESS STEEL	6
4	23020	1/2" NPT HEX HEAD PLUG	5
2	OV-13	O-RING .210 VITON 6.225 ID X 2-362	4
2	72368	SPRING .135 SS 1.545 ID X 1.875	3
2	73155	FBO BOWL ASSY - 14" - WHITE	2
1	73301000	DUAL FBO MARINE CASTING ASM (WHITE)	1

23020 PLUGS TO BE INSTALLED HAND TIGHTEN THEN TIGHTEN 2-3 MORE TURNS WITH WRENCH. USE THREAD SEALANT

DRAIN VALVES TO BE INSTALLED HAND TIGHTEN THEN TIGHTEN 2-3 MORE TURNS WITH WRENCH. USE THREAD SEALANT

REVISE ONLY ON Pro/E SYSTEM		DRAWN	ACS	DATE	112410
THIS PRINT SUPERSEDES ANY EARLIER DATE; DESTROY SAME		CHECKED	JKN	DATE	070811
THIS PRINT AND ALL INFORMATION THEREIN IS OUR PROPERTY. IS CONFIDENTIAL AND MUST NOT BE MADE PUBLIC OR COPIED UNLESS AUTHORIZED BY US. THIS PRINT IS SUBJECT TO RETURN ON DEMAND.		DESIGN	ACS	DATE	112410
PROD CODE	56014	MATERIAL: WHITE POWDER COAT			
NEXT ASSY	FIRST USED ON	FINISH: WHITE POWDER COAT			
APPLICATION		DO NOT SCALE DRAWING			
UNLESS OTHERWISE SPECIFIED: DIMENSIONS ARE IN INCHES		TOLERANCES			
DECIMAL .1		ANGULAR ± 0			
.XX ± .06		FRACTIONAL ±			
XXX ± .030		±			
SCALE		0.375		DRAWING DATE	
SHEET		1		c2	

Parker Racor

PARKER HANNIFIN CORPORATION
RACOR DIVISION
805 NORTH WEST STREET
HOLLY SPRINGS, MS 38635

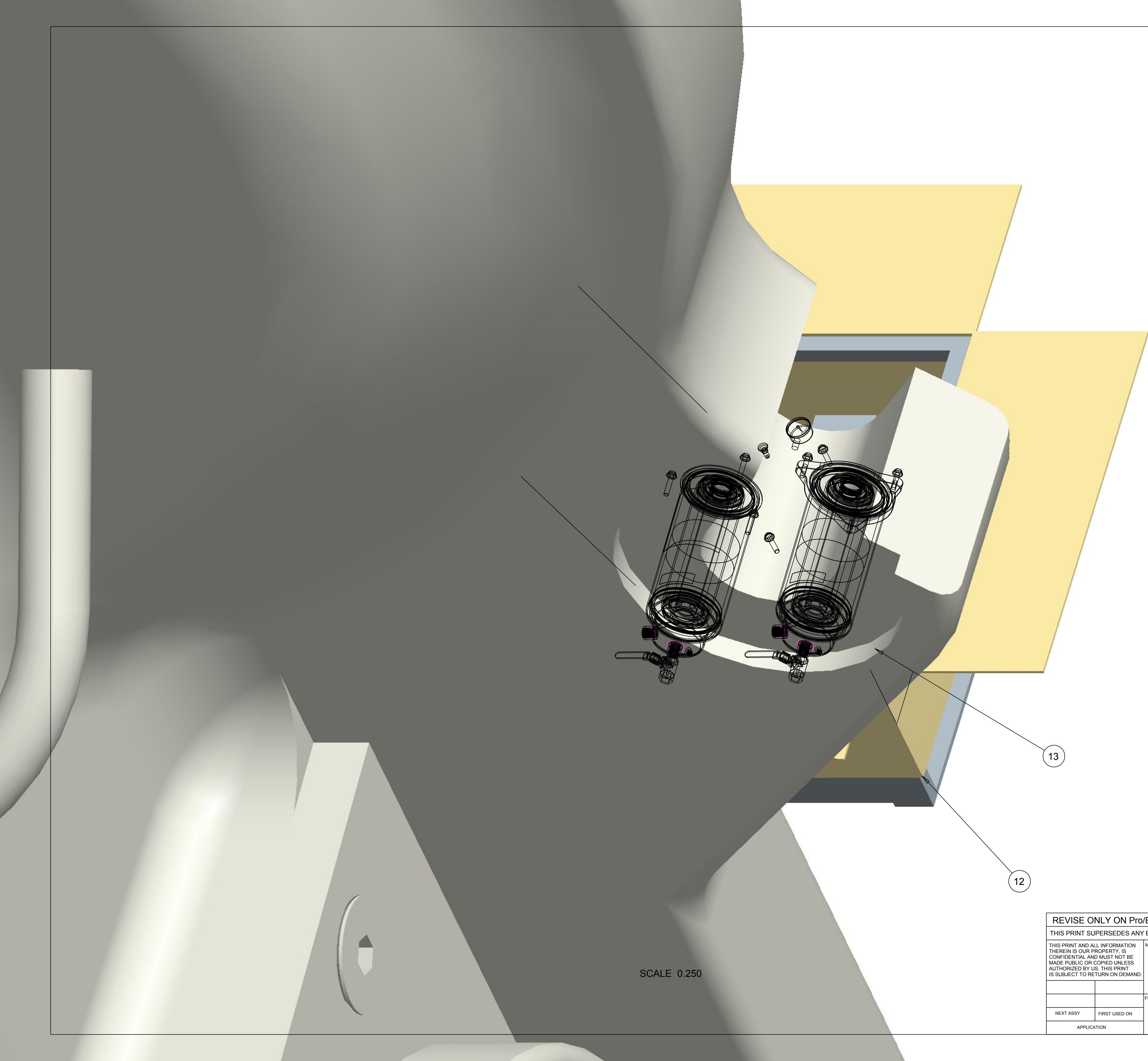
DUAL FBO MARINE FILTER ASM

SIZE: D CODE IDENT NO: 55752 DWG. NO: DFBO-14-MA REV: E

Ver 9

Rev

REVISIONS					
LTR	DESCRIPTION	E. N.	DATE	DRN	CHK
E	SEE SHEET 1 FOR DETAILS	00305	051812	JN	JN



- NOTES:
1. USE (2) M8 X 2 3/4" HEX LAG BOLTS AND WASHERS TO ATTACH DFBO TO CRATE.
 2. PARTICLEBOARD SHEET TO SIT ON TOP OF CRATE AS SHOWN
 3. TAPE FLAPS CLOSED
 4. USE 6" X 4" THERMAL TRANSFER LABEL ON OUTSIDE OF CARTON
 5. WAREHOUSE/SHIPPING TO BAND BOX TO PALLET

SCALE 0.250

QUANTITY REQD	PART NUMBER	DESCRIPTION	ITEM NO.
PARTS LIST			

REVISE ONLY ON Pro/E SYSTEM		DRAWN	ACS	DATE	112410	PARKER HANNIFIN CORPORATION RACOR DIVISION 805 NORTH WEST STREET HOLLY SPRINGS, MS 38955	
THIS PRINT SUPERSEDES ANY EARLIER DATE; DESTROY SAME		CHECKED	JKN	DATE	070811		
THIS PRINT AND ALL INFORMATION THEREIN IS OUR PROPERTY, IS CONFIDENTIAL AND MUST NOT BE MADE PUBLIC OR COPIED UNLESS AUTHORIZED BY US. THIS PRINT IS SUBJECT TO RETURN ON DEMAND.		DESIGN	JKN	DATE	070811	TITLE	
		MATERIAL:		UNLESS OTHERWISE SPECIFIED: DIMENSIONS ARE IN INCHES		DUAL FBO MARINE FILTER ASM	
		FINISH:		TOLERANCES		SIZE	REV
				DECIMAL .XX ± .010 .5 ±		D	55752
				FRACTIONAL .XXX ± .005 ±		CODE IDENT NO.	DFBO-14-MA
				DO NOT SCALE DRAWING		DWG. NO.	E
						SCALE	0.375
						DRAWING DATE	
						SHEET	2 of 2

Ver 9 Rev WIP