

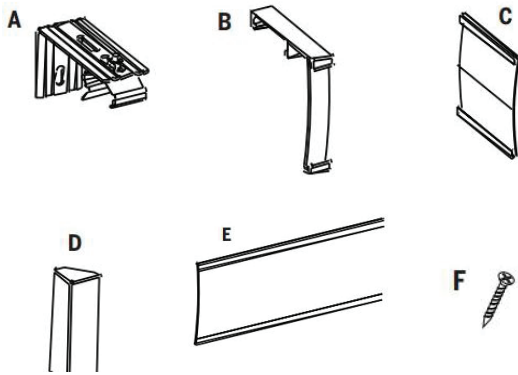
## How to Install Stock Vertical Blinds

Before you begin your installation:

### READ ALL INSTALLATION INSTRUCTIONS!

- Make sure that you have all tools and hardware needed for installation.
- Check the installation surface (wall, ceiling, or window frame) to ensure that you have suitable fasteners and tools for the material.
- Double check the headrail and blinds for proper width and length. If you are installing several sets of blinds, be sure to match them with the appropriate window.
- Check the parts list shipped with the product to confirm that you have the correct number of brackets.

### PARTS LIST

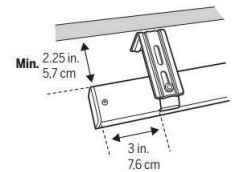
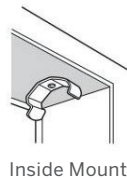


Width	Up to 48 in.	48 in. to 78 in.	Greater than 78 in.
A. Mounting Bracket	2	3	4
B. Valance clip	2	3	4
C. Groover valance return	2	2	2
D. Valance corner	2	2	2
E. Groover valance	1	1	1
F. #6 Screw × 1 1/4 in.	4	6	8

### 1. TOOLS YOU MAY NEED (NOT INCLUDED):

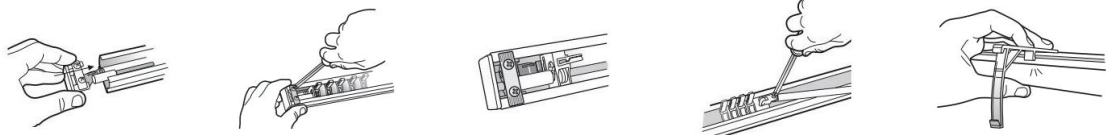
- Tape Measure
- Pencil
- Flat-blade or Philips Head Screwdriver
- Drill with Bits

### 2. BRACKET PLACEMENT

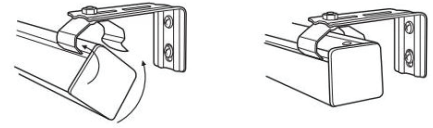
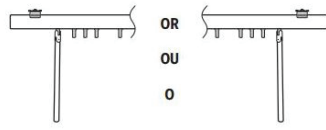


### 3. HEADRAIL PREPARATION

Where applicable.

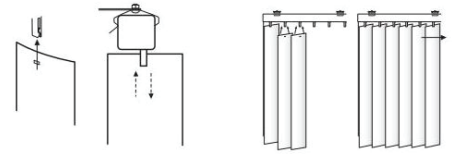
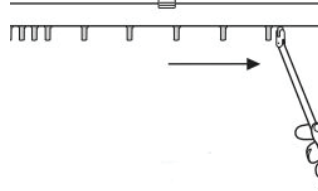


## 4. HEADRAIL ATTACHMENT



Left to right opening recommended for S-Curve vanes.

## 5. VANE ATTACHMENT



Spread vane clips evenly across the headrail.

## 6. VALANCE ATTACHMENT



## 7. VANE REMOVAL

