



Series A



BBF fits your style, your budget, your business.

BBF fits your furniture needs with:

- Product lines for varying space requirements and work styles
- Styles and aesthetic choices for any budget
- Products tested to withstand 40-hour+ work weeks
- Products that perform anywhere you work

BBF fits your needs for value-added service with:

- Nationwide delivery and installation to any zip code*
- Two-day order fulfillment, through our East and West coast distribution centers
- Accommodation of small orders and quick turnarounds
- Environmentally-conscious operating and manufacturing processes

*Continental U.S.



Series A is a simple, blue collar workhorse.

It offers the ultimate in straightforward, no-frills utility and go-anywhere versatility. When it's time to roll up your sleeves and get things done, think Series A.



Hansen Cherry Finish
(4) 42"W Corner Desk, (4) 42"W Corner Overhead,
(4) 36"W Desk, (4) Mobile Pedestal (B/B/F), (4) 24"W Piler/Filer

- Comprehensive
- Freestanding and modular – easily added to
- Highly utile
- DIY
- Scalable
- Steely and sturdy

Fits your function



Natural Cherry Finish
48"W Corner Desk, 48"W Desk, 36"W Desk,
36"W 2-Drawer Lateral File, Mobile Pedestal (F/F)
Optional Accessories Shown: Pencil Drawer, Articulating Keyboard Tray

What kind of office do you need?

How will you use your furniture?

Series A features a range of options from a single desk to multiple workstations. Choose a pre-configured typical or have a custom space plan completed free.



Pewter Finish

(8) 48"W Corner Desk, (8) 48"W Corner Overhead, (6) 48"W Desk, (6) 48"W Overhead, (8) 36"W Desk, (8) 36"W Overhead, (8) Mobile Pedestal (F/F), (4) 36"W 2-Drawer Lateral File, (2) 72"W Universal Freestanding Peninsula
Optional Accessories Shown: (6) Universal Keyboard Shelf



Light Oak Finish

60"W x 44"D LH L-Bow Desk, 48"W Corner Desk, 48"W Desk, 48"W Corner Overhead, 48"W Overhead, Mobile Pedestal (F/F)
Optional Accessories Shown: Articulating Keyboard Tray



Natural Cherry Finish
(7) 60"W Desk



Features

- Multiple finishes match individual style preferences
- Freestanding, modular design allows for virtually limitless layout options
- Open leg design to allow movement between desks
- Heavy-duty full-extension suspensions on file drawers
- This ready-to-assemble product line is a smart option for those who require moderately priced furniture designed to withstand the rigors of a 40-hour+ work week
- Meets ANSI/BIFMA standards for safety and performance
- Commercial quality backed by 10-year manufacturer's warranty
- FREE space-planning assistance is available



Overhead storage



Full-extension ball-bearing suspensions on file drawers

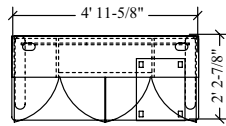


Leg and desktop grommets

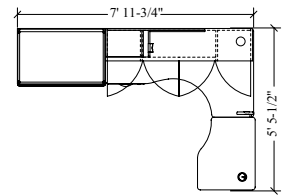
Office Typicals



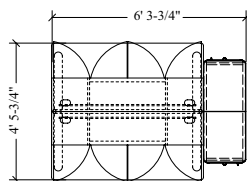
Qty.	Item
1	60"W Desk
1	60"W Overhead
1	Mobile Pedestal (B/B/F)



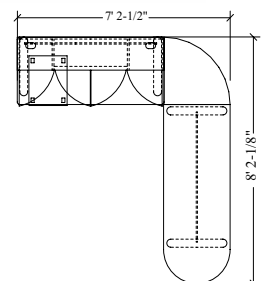
Qty.	Item
1	Expandable Single Pedestal Corner Desk (B/F)
1	30"W Transitional Bridge
1	60"W Overhead
1	36"W 2-Drawer Lateral File



Qty.	Item
2	60"W Desk
2	60"W Overhead
2	Vertical Locker

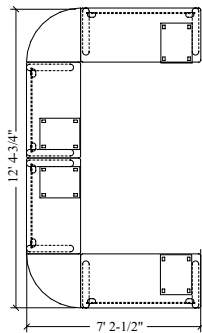


Qty.	Item
1	60"W Desk
1	60"W Overhead
1	27"W Corner Connector
1	72"W Universal Freestanding Peninsula
1	Mobile Pedestal (B/B/F)

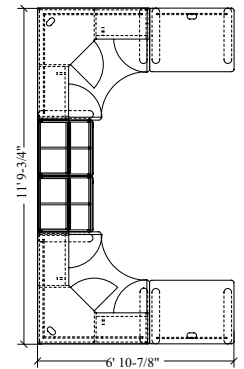




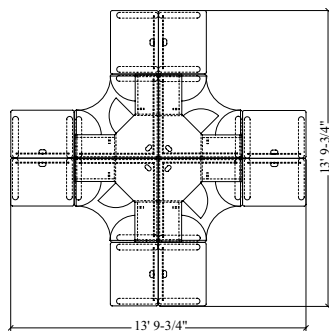
Qty.	Item
2	60"W Desk
2	48"W Desk
2	27"W Corner Connector
2	Mobile Pedestal (B/B/F)
2	Mobile Pedestal (F/F)



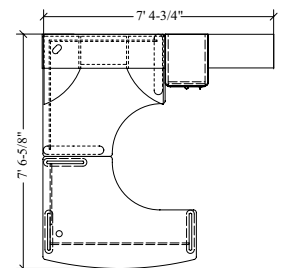
Qty.	Item
2	48"W Corner Desk
2	48"W Corner Overhead
2	24"W Piler/Filer
2	24"W Overhead
2	36"W Desk



Qty.	Item
4	48"W Corner Desk
4	48" Corner Overhead
8	36"W Desk



Qty.	Item
1	60"W x 44"D RH L-Bow Desk
1	48"W Corner Desk
1	48"W Corner Overhead
1	Vertical Locker
1	26"W 5-Shelf Bookcase



Work Surfaces and Extensions



60"W x 44"D RH L-Bow Desk
29 7/8"H x 59 3/8"W x 43 3/8"D

60"W x 44"D LH L-Bow Desk
29 7/8"H x 59 3/8"W x 43 3/8"D



Expandable Single Pedestal
Corner Desk (B/F)
29 7/8"H x 60" - 71"W x 36"D



48"W Corner Desk
29 7/8"H x 47 1/4"W x 47 1/4"D



72"W Universal
Freestanding Peninsula
29 7/8"H x 71 1/4"W x 26 7/8"D



42"W Corner Desk
29 7/8"H x 41 3/8"W x 41 3/8"D



27"W Corner Connector
1"H x 26 7/8"W x 26 7/8"D



72"W Desk
29 7/8"H x 71 1/8"W x 26 7/8"D

60"W Desk
29 7/8"H x 59 3/8"W x 26 7/8"D

48"W Desk
29 7/8"H x 47 3/8"W x 26 7/8"D

36"W Desk
29 7/8"H x 35 3/8"W x 26 7/8"D



30"W Transitional Bridge
29 7/8"H x 29 1/2"W x 26 7/8"D
Compatible with Expandable
Single Pedestal Corner Desk
(B/F) only

Overhead Storage



48"W Corner Overhead
36 5/8"H x 47 1/4"W x 47 1/4"D



42"W Corner Overhead
23 5/8"H x 40 3/4"W x 40 3/4"D



72"W Overhead
36 5/8"H x 71 3/8"W x 13 3/8"D



60"W Overhead
36 5/8"H x 59 3/8"W x 13 3/8"D



48"W Overhead
36 5/8"H x 47 3/8"W x 13 3/8"D



36"W Overhead
36 5/8"H x 35 3/8"W x 13 3/8"D



24"W Overhead
36 5/8"H x 23 3/8"W x 13 3/8"D

Filing/Storage



Mobile Pedestal (B/B/F)
27 $\frac{7}{8}$ "H x 15 $\frac{3}{4}$ "W x 20 $\frac{1}{4}$ "D



Mobile Pedestal (F/F)
27 $\frac{7}{8}$ "H x 15 $\frac{3}{4}$ "W x 20 $\frac{1}{4}$ "D



36"W 2-Drawer Lateral File
29 $\frac{7}{8}$ "H x 35 $\frac{3}{4}$ "W x 23 $\frac{3}{8}$ "D



Vertical Locker (Tall)
66 $\frac{3}{8}$ "H x 16 $\frac{1}{8}$ "W x 20 $\frac{3}{8}$ "D



24"W Piler/Filer
29 $\frac{7}{8}$ "H x 23 $\frac{3}{8}$ "W x 23 $\frac{3}{8}$ "D



26"W 5-Shelf Bookcase
66 $\frac{1}{4}$ "H x 25 $\frac{3}{8}$ "W x 13 $\frac{3}{8}$ "D

Conference Tables



42" W Round
Conference Table
29 $\frac{7}{8}$ "H x 41 $\frac{1}{2}$ "W x 41 $\frac{1}{2}$ "D



82"W x 35"D Racetrack
Conference Table
29 $\frac{7}{8}$ "H x 81 $\frac{3}{8}$ "W x 34 $\frac{1}{2}$ "D

Finish Options



White Spectrum
with Pewter*

*Pewter Swirl Door Fronts



White Spectrum
with Slate Gray*

*Slate Lined Door Fronts



Beech with
Slate Gray



Light Oak
with Sage



Natural Cherry with
Slate Gray



Hansen Cherry
with Galaxy

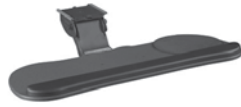


Sienna Walnut
with Bronze

Accessories



Articulating
Keyboard Tray
3 $\frac{3}{8}$ "H x 24 $\frac{3}{8}$ "W x 19 $\frac{1}{2}$ "D



Deluxe Articulating
Keyboard Tray
1 $\frac{1}{4}$ "H x 27"W x 11"D



Universal Keyboard Shelf
4"H x 30 $\frac{3}{8}$ "W x 16 $\frac{5}{8}$ "D



Pencil Drawer
2 $\frac{5}{8}$ "H x 26 $\frac{3}{8}$ "W x 15 $\frac{7}{8}$ "D



Multi-purpose Drawer
w/Drop Front
3 $\frac{5}{8}$ "H x 27 $\frac{1}{8}$ "W x 17 $\frac{3}{8}$ "D



Monitor Arm w/Post
20 $\frac{1}{2}$ "H x 12 $\frac{3}{8}$ "W x 14"D



Data/Power Hub
2 $\frac{3}{8}$ "H x 5 $\frac{1}{2}$ "W x 6 $\frac{3}{8}$ "D



Task Light
1 $\frac{1}{2}$ "H x 23 $\frac{3}{8}$ "W x 3 $\frac{1}{2}$ "D



CPU Holder
22 $\frac{5}{8}$ "H x 9 $\frac{1}{8}$ "W x 14 $\frac{1}{8}$ "D

Customer Service/Sales Support

How can we help you?

Please call 800.964.1638 for assistance with questions regarding space planning, product availability, parts replacement, warranty issues and general product information. Office hours are Monday-Friday, 8 am–5 pm ET excluding major holidays.

Sales Assistance 800-964-1638

Service Issues 800-950-4782



Environmental Sustainability

At BBF, we are proud to be good stewards of the environment, taking care to be environmentally conscious from the beginning to the end of our manufacturing process.

Some of our environmental initiatives include:

- **CARB:** All Bush products are compliant with CARB (California Air Resource Board) standards for reduced formaldehyde emissions
- **EPP Downstream Program (Composite Panel Association):** More than 50% of panels purchased from EPP sources; board is 100% pre- or post-consumer recycled
- **Energy Reduction:** Reducing electricity consumption and improving machinery efficiency
- **Landfill Reduction:** Diversion of plastic waste away from landfills and improved recycling of plastic, cardboard, tin and scrap metal
- **Corporate Recycling:** Recycling plastic, paper and aluminum cans in our corporate offices
- **Special Sustainability Teams:** Tasked with improving efficiency and reducing waste in our manufacturing processes
- **Ongoing Certifications:** Actively participating in industry-related programs such as BIFMA Level

Product Testing

We fit your demands for safety and durability. All of our commercial products undergo rigorous testing in our sophisticated in-house testing laboratory, to ensure that they meet or exceed professional ANSI/BIFMA standards for safety and performance.

We test:

- Resistance to scratches, stains and abrasions
- Weight load
- Leg strength
- Tip stability
- Pull cycles on mobile pedestals, lateral file and doors/hinges

The result of this obsessive attention to quality is that our products are ergonomically correct and compliant with state and federal health and safety guidelines.





Scan here with your
Smartphone for more
information.



One Mason Drive
PO BOX 460
Jamestown, NY 14702-0460
800.964.1638
Fax: 716.665.2074
www.bbffits.com

To reorder this catalog visit
www.bushliterature.com
30861sa 12/11