

UPDATED 6.01.21

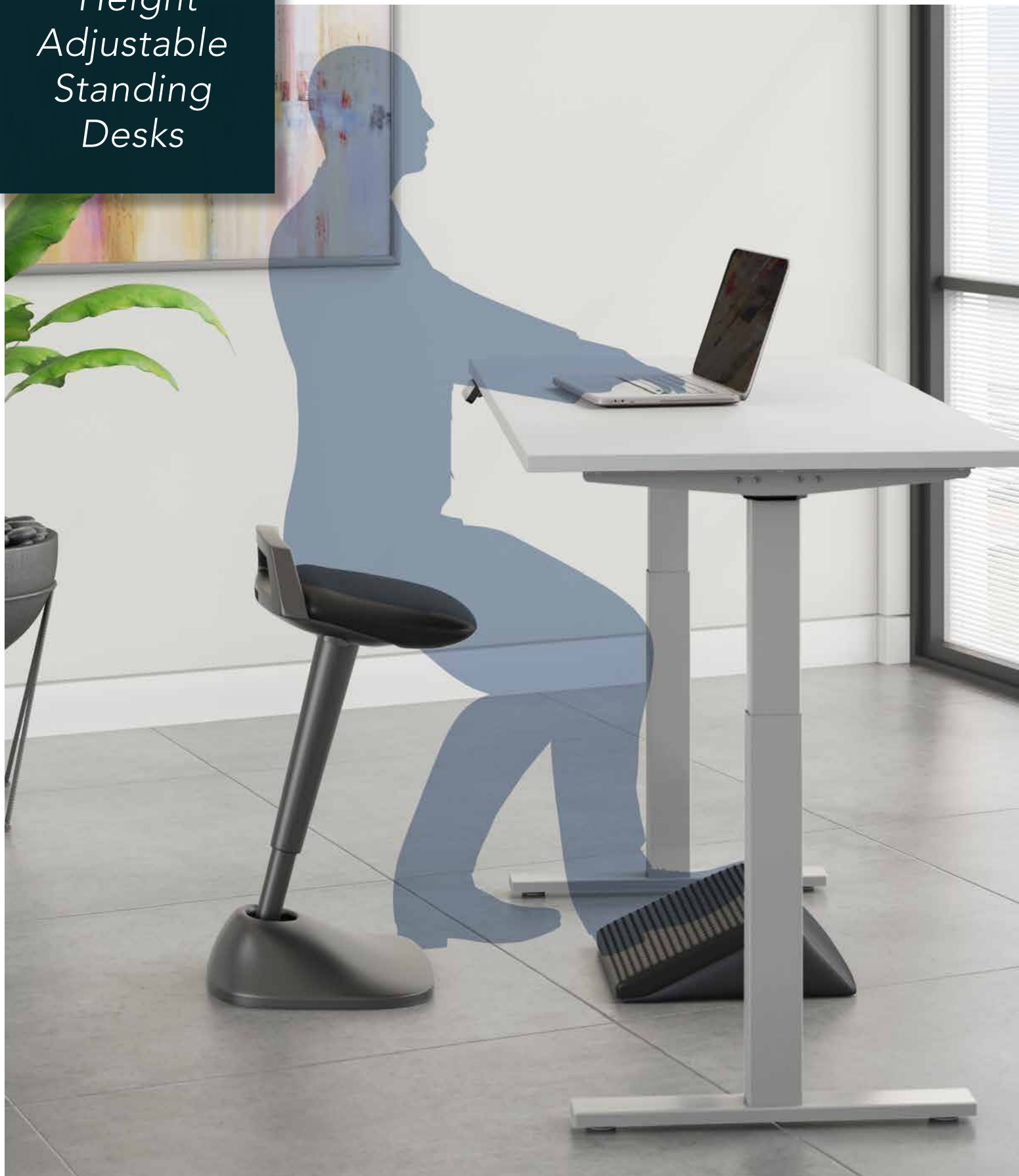
MOVE 80 SERIES

Height Adjustable Standing Desks



EASY | FAST | AFFORDABLE

*Height
Adjustable
Standing
Desks*



Make the right **Move** for your budget, style and comfort.

Choose from 3 collections of electric height adjustable standing desks in sizes, finishes and price points to fit your unique workspace needs.

Move 80 Series	Move 60 Series	Move 40 Series
Up/Down + Memory Control (4 Presets)	Up/Down + Memory Control (4 Presets)	Up/Down Control
Height Range: 24.5-50"	Height Range: 27-47.6"	Height Range: 28-48"
UL Listed Dual Electric Motor	UL Listed Dual Electric Motor	UL Listed Single Electric Motor
Speed: 1.5" Per Second	Speed: 0.78" Per Second	Speed: 1.25" Per Second
16 Gauge Steel Base	16 Gauge Steel Base	16 Gauge Steel Base
200 lb Weight Capacity	200 lb Weight Capacity	176 lb Weight Capacity
ANSI/BIFMA Rated	ANSI/BIFMA Rated	ANSI/BIFMA Rated
5 Year Warranty	5 Year Warranty	5 Year Warranty
Thermally Fused Laminate Work Surface	Thermally Fused Laminate Work Surface	Thermally Fused Laminate Work Surface
6 Desktop Finishes	10 Desktop Finishes	5 Desktop Finishes
Silver or Black Base	Silver or Black Base	Silver Base
\$\$\$	\$\$	\$

MOVE 80 SERIES

*Height Adjustable
Standing Desks*

Style: Contemporary

Work Surface:
Thermally fused laminate

Not On GSA Contract



The ultimate in user comfort.

- Height range allows for comfortable sitting and standing throughout the workday without sacrificing productivity
- Quiet UL listed electric motors, 10 foot power cord plugs into standard wall outlet
- Height ranges from 24.5" low to 50" high and operates at speed of 1.5 inches per second
- Welded 16 gauge steel base legs and feet provide superb structural strength
- Weight capacity up to 200 lbs.
- Four programmable presets with a quiet, soft-touch start and stop

FINISH OPTIONS

Top

Use below finish codes where XX is indicated in SKU #



Hansen Cherry
(HC)



Mocha Cherry
(MR)



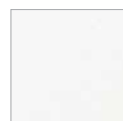
Harvest Cherry
(CS)



Storm Gray
(SG)



Natural Maple
(AC)



White
(WH)

Base



Cool Gray Metallic



Black Powder Coat

Store your favorite heights for repeated use with 4 programmable presets.



Shown in Storm Gray with Office 500

Comfort above all else. Feel great throughout your work-day no matter your height with the maximum adjustability range and programmable presets of the ergonomic
Move 80 Series.



Works well in both open plan and private office settings. Can be used as a table, return or bridge.



Choose your base option



Cool Gray Metallic



Black Powder Coat



BASES ONLY



24D Straight Height Adjustable Standing Desk Base*
70.98"W x 22.64"D x 50.00"H
Cool Gray Metallic (shown above)
HATB24DGM-03K List Price - \$1,317.00
Black Powder Coat
HATB24DBL-03K List Price - \$1,317.00



30D Straight Height Adjustable Standing Desk Base*
70.98"W x 22.64"D x 50.00"H
Cool Gray Metallic (shown above)
HATB30DGM-03K List Price - \$1,317.00
Black Powder Coat
HATB30DBL-03K List Price - \$1,317.00

24D



48W x 24D Height Adjustable Standing Desk*
47.60"W x 23.35"D x 51.00"H
Cool Gray Metallic (shown above)
HAT4824XXK List Price - \$1,474.00
Black Powder Coat
HAT4824XXBK List Price - \$1,474.00
Not available in: SG, CO

30D



48W x 30D Height Adjustable Standing Desk*
47.60"W x 29.37"D x 51.00"H
Cool Gray Metallic
HAT4830XXK List Price - \$1,499.00
Black Powder Coat (shown above)
HAT4830XXBK List Price - \$1,499.00



60W x 30D Height Adjustable Standing Desk*
59.45"W x 29.37"D x 51.00"H
Cool Gray Metallic
HAT6030XXK List Price - \$1,549.00
Black Powder Coat (shown above)
HAT6030XXBK List Price - \$1,549.00



72W x 30D Height Adjustable Standing Desk*
71.02"W x 29.37"D x 51.00"H
Cool Gray Metallic
HAT7230XXK List Price - \$1,568.00
Black Powder Coat (shown above)
HAT7230XXBK List Price - \$1,568.00

Collection Compatibility Chart	Harvest Cherry (CS)	Hansen Cherry (HC)	Mocha Cherry (MR)	Natural Maple (AC)	White (WH)	Storm Gray (SG)
Office 500						●
400 Series			●	●	●	●
Series C		●				
Series A		●				
Jamestown						●
Enterprise	●		●			
Echo					●	
Office in an Hour™		●	●			
Easy Office™			●			
Studio C	●			●	●	●
Method				●	●	●

*NOT ON GSA CONTRACT

#check size availability



BUSH BUSINESS FURNITURE

800.964.1638 | www.bushbusinessfurniture.com | email - bbfsales@bushindustries.com

Prices shown are manufacturer's list price at time of printing. | Prices are subject to change without notice. | All prices shown are in US dollars.